

ENG

Translation of the original operating instructions manual



PELLENC POWER TOOLS BATTERY ALPHA 260 & 520

Operating instructions

56_133912-J
05/2022

READ THE USER GUIDE CAREFULLY BEFORE USE

TABLE OF CONTENTS

1. INTRODUCTION	5
2. SAFETY	6
2.1. SAFETY MEASURES ASSOCIATED WITH THE USE OF THE TOOL	6
2.2. SAFETY MEASURES ASSOCIATED WITH BATTERY USE	6
2.3. SAFETY MEASURES WHEN USING THE "PELENC" CHARGER	7
2.4. SAFETY SIGNAGE	8
3. DESCRIPTION AND TECHNICAL FEATURES	9
3.1. TECHNICAL CHARACTERISTICS - BATTERY	9
3.2. TECHNICAL CHARACTERISTICS - CHARGER	9
3.3. DESCRIPTION	10
4. COMMISSIONING	11
4.1. BATTERY DISPLAY	11
4.2. CHARGING THE BATTERY	12
4.3. CHARGING ON THE WALL-MOUNTED CHARGING STATION	13
4.4. FITTING THE BATTERY ON THE HARNESS AND CONNECTING THE TOOL	13
4.5. QUICK BATTERY CONNECTION AND DISCONNECTION	14
4.5.1. BATTERY CONNECTION	14
4.5.2. DISCONNECTING THE BATTERY	14
4.6. SWITCHING THE BATTERY ON AND OFF	15
5. MAINTENANCE	15
5.1. MISCELLANEOUS MAINTENANCE BATTERY	15
5.2. MISCELLANEOUS MAINTENANCE CHARGER	15
6. INCIDENTS AND TROUBLESHOOTING	16
6.1. SUMMARY OF HMI DISPLAY AND BIP MESSAGES	16
6.2. TROUBLESHOOTING	17
7. STORAGE AND TRANSPORT	17
8. ACCESSORIES AND CONSUMABLES	18
8.1. ACCESSORIES (NOT SUPPLIED WITH THE BATTERY)	18
9. WARRANTIES	19
9.1. GENERAL WARRANTIES	19
9.1.1. STATUTORY WARRANTY	19
9.1.2. COMMERCIAL WARRANTYPELENC	20
9.1.3. PAID AFTER-SALES SERVICE	21

10. COMPLIANCE STATEMENTS	22
10.1. "EC" DECLARATION OF CONFORMITY: 260, 520 BATTERY	22
10.2. "UK" DECLARATION OF CONFORMITY: 260 & 520 BATTERIES	23

1. INTRODUCTION

Dear Customer,

Thank you for purchasing your Pellenc power tools battery ALPHA 260 & 520. Properly used and maintained, this equipment will give you years of satisfaction.



Warning

In accordance with product liability laws, we are not responsible for damage caused by our product if the product includes an accessory that is not from the manufacturer or is not approved by the manufacturer. The use of any other accessory may increase the risk of injury.



Warning

Your machine contains numerous recoverable or recyclable materials. Return it to your dealer or, failing this, to an approved servicing centre to be treated.



Comply with the regulations in force in your country as concerns environmental protection associated with your activity.



Warning

It is imperative that you read through the ENTIRE user's manual guide before using or servicing the tool. Always comply with the instructions and illustrations provided in the user's manual.


Throughout the user's manual guide you will find advisory notes and information entitled: NOTE, IMPORTANT, ATTENTION and WARNING.

Points marked "NOTE" indicate additional information.

Points marked "IMPORTANT" warn the user of a potential risk for the equipment.

Points marked "ATTENTION" warn the user of a potentially hazardous situations which if not avoided may result in minor injuries.

Points marked "WARNING" warn the user of a potentially hazardous situation which if not avoided may result in serious injury or death.

The warning  indicates that damage resulting from failure to comply with the procedures and instructions is not covered by the warranty and the owner will be liable for any repair costs.

Safety indications are also given on the tool; they remind you of the safety precautions to be taken. Identify and read these indications before using the tool. Immediately replace any indications that may become partially illegible or deteriorated.

Refer to Section 2.4, "Safety signage" for the location diagram of the safety stickers affixed to the tool.

No part of this manual may be reproduced without the written permission of the company PELLENC. The illustrations provided in this manual are for information purposes only and are in no way contractual. The PELLENC company reserves the right to make any modification or improvement to its products as deemed necessary without informing customers already in possession of a similar model. This manual forms an integral part of the tool and must accompany the tool if it changes hands.

2. SAFETY



Warning

Never carry out maintenance work on damaged battery packs. Service of battery packs should only be performed by the manufacturer or authorized service providers.

2.1. SAFETY MEASURES ASSOCIATED WITH THE USE OF THE TOOL

Note

Please refer to the instructions of the tool concerned.



Warning

Read all safety warnings and all instructions. Retain all the safety measures and instructions for later reference.

This device is not intended for use by individuals (including children) with reduced physical, sensory or mental capabilities, nor by anyone lacking in experience or knowledge, except if they are supervised or have received prior instructions from a person responsible for their safety.

2.2. SAFETY MEASURES ASSOCIATED WITH BATTERY USE

1. If not using the battery unit, store it away from other metal objects such as paper clips, coins, keys, nails, screws or other such small metal items that might form a connection between the two terminals. Creating a short-circuit between the battery terminals can lead to burns or cause a fire.
2. Keep the battery out of the reach of children and place it on a non-combustible support.
3. Do not interfere with its cooling cycle.
4. Do not use or leave the battery near a heat source ($> 60^{\circ}\text{C}$).
5. Do not leave the battery in direct, strong sunlight.
6. Do not expose the battery to microwaves or high pressure.
7. Do not immerse the battery in water.
8. The batteries must be charged in a dry, ventilated room at a temperature between 10°C and 25°C maximum, away from any moisture.
9. If the battery is not used for 10 days, the battery will automatically discharge until it reaches its storage charge rate, then goes to standby. It will heat up during this phase.
10. Over time, the capacity of your battery decreases. When it reaches half of its original battery-life operating autonomy, it should be replaced.
11. The battery may lose 1 to 4 % of its capacity when exposed to a temperature higher than or equal to 55°C for one week.
12. The charging location must be equipped with a class D fire extinguisher (for metal fires) in good working order.
13. The standards in effect must be complied with when shipping a complete tool or a battery.
 - Complete tool with battery: product classified UN3481 class 9.
 - Battery alone: product that is classified as class 9, UN3480.
14. Use of a battery other than that provided by Pellenc SA is dangerous (risk of serious injury). If a different battery is used, Pellenc SA cannot be held responsible for any consequences.
15. The battery must be protected from any impact and must be positioned and secured appropriately during transportation.
16. In the case of suspicious smoke, place the battery outside the charging area or transportation vehicle as far away as possible from any inflammable material.
17. Never store a battery when its capacity is below 50 %. Recharge the battery before storage if the value is below 50%.

18. In inappropriate conditions, a liquid can flow batteries; avoid contact with it. In the event of accidental contact, rinse with water. In the event of contact with eyes, seek professional medical help. The liquid leaking from the batteries can cause irritations or burns.
19. Pellenc power tools must only be used with the battery units designed for the purpose. Use of other battery units can present a risk of injury and fire.
20. Recharge only with the charger specified by the manufacturer. A charger adapted to one type of battery unit may present a fire risk if used with a different battery unit.
21. Do not use the battery for any purpose other than that initially envisaged (exclusively for use with Pellenc tools).
22. At the end of its life, the battery must be returned to the authorized distributor from whom it was purchased to be recycled in accordance with waste regulations.
23. Fragile case, contains an electronic board and lithium.

2.3. SAFETY MEASURES WHEN USING THE "PELENC" CHARGER

1. When in operation, the charger's temperature can reach 60°C. No flammable material must be within 1.5 metres of the charger and battery.
2. Place the charger out of the reach of children and on a non-combustible support.
3. Do not interfere with its cooling cycle.
4. The charger is intended only for recharging the battery. Do not charge non-rechargeable batteries.
5. The charging location must be equipped with a class D fire extinguisher (for metal fires) in good working order.
6. If the output cord is cut or damaged, bring the entire charger back to the authorised distributor where the tool was purchased.
7. Only recharge using the "PELENC" charger indicated by the manufacturer. A charger adapted to one type of battery unit may present a fire risk if used with a different battery unit.
8. This charger is designed to charge Pellenc tool lithium batteries.
9. Do not use it for any other purposes.
10. Children must be supervised to ensure they do not play with the charger.
11. Check that the cable cannot be bent and that it does not touch hot surfaces or sharp edges.
12. Ensure good ventilation during the charging.
13. Never cover the charger. This charger must not be used outdoors.
14. Make sure the power connector is not exposed to water.
15. Never attempt to charge a damaged battery.
16. The grid connection must comply with national electrical regulations.
17. Check the wiring of the charger before use. Never use the charger if the wiring is damaged.
18. When the battery is charging, place the charger on a non-flammable support, more than 1.5 m away from any flammable object.

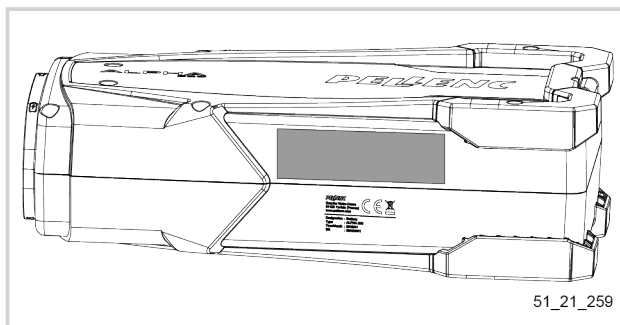
2.4. SAFETY SIGNAGE

California State Proposition 65:



Caution

This product contains or emits a chemical recognized by the State of California to cause cancer, birth defects or other reproductive harm.



51_21_259

BATTERY Li-Ion REFERENCE 133214 ALPHA 260	43.2V x 6.00Ah = 259Wh IEC/EN 61960 43.2V ± 5.90Ah 12INR19/66-2				
<p>À utiliser uniquement avec le chargeur batterie PELENC modèle</p> <p>Usar sólo con el cargador de batería PELENC del modelo</p> <p>For use only with PELENC's battery charger model</p> <p>Nur zur Verwendung mit dem Ladegerät Modell PELENC</p> <p>Só usar com o carregador de bateria PELENC</p> <p>Per l'utilizzo solo con il caricabatteria modello PELENC</p> <p>CB5075 / CB5022HV</p>					

56_22_PICTO_003

260 Battery

BATTERY Li-Ion REFERENCE 133210 ALPHA 520	43.2V x 12.00Ah = 518Wh IEC/EN 61960 43.2V ± 11.80Ah 12INR19/66-4				
<p>À utiliser uniquement avec le chargeur batterie PELENC modèle</p> <p>Usar sólo con el cargador de batería PELENC del modelo</p> <p>For use only with PELENC's battery charger model</p> <p>Nur zur Verwendung mit dem Ladegerät Modell PELENC</p> <p>Só usar com o carregador de bateria PELENC</p> <p>Per l'utilizzo solo con il caricabatteria modello PELENC</p> <p>CB5075 / CB5022HV</p>					

56_22_PICTO_004

520 battery

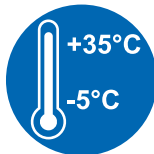


00_20_004

Protection rating IP54 (Allover protection against dust and water spray).



Please read the operating instructions.



This equipment must be used at a temperature of between -5° and +35°C.



Tool compliant with Moroccan standards.

Tool compliant with British standards



Marking symbol for identifying the chemical characteristic of the battery during recycling.



Tool compliant with EC standards.



Lithium-ion battery.

At the end of its life, the battery must be returned to the authorized distributor from whom it was purchased to be recycled in accordance with waste regulations.



The RBRC™ sticker (found on the packaging) indicates that PELLENC voluntarily participates in an industry program for the collection and recycling of used batteries in the United States and Canada.

3. DESCRIPTION AND TECHNICAL FEATURES

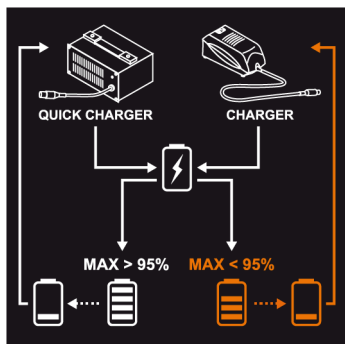
3.1. TECHNICAL CHARACTERISTICS - BATTERY

Battery	Alpha 260	Alpha 520
Rated battery voltage	43.2 V ⁻⁻⁻	
Type of battery	12 times 2 elements included in 1 pack	12 times 4 elements included in 1 pack
Battery capacity	6 Ah	12 Ah
Battery energy	259 Wh	518 Wh
Battery life	Depending on the tool	
Weight/Battery	2.5 kg	3.6 kg
Operating frequency band	13.56 Mhz, Receiver	

3.2. TECHNICAL CHARACTERISTICS - CHARGER

	CB5022 Charger	CB5022HV charger	Quick Charger CB5075
Commercial reference of the charger	57230	57256	57213
Voltage	100-240V ~ 50/60Hz 140W class II	100-240V ~ 50/60Hz 143W class I	100-240V ~ 50/60Hz 485W class I
Charging voltage	50.2 V DC		
Charging current	2.2A DC maximum	2.2A DC maximum	7.6A DC maximum

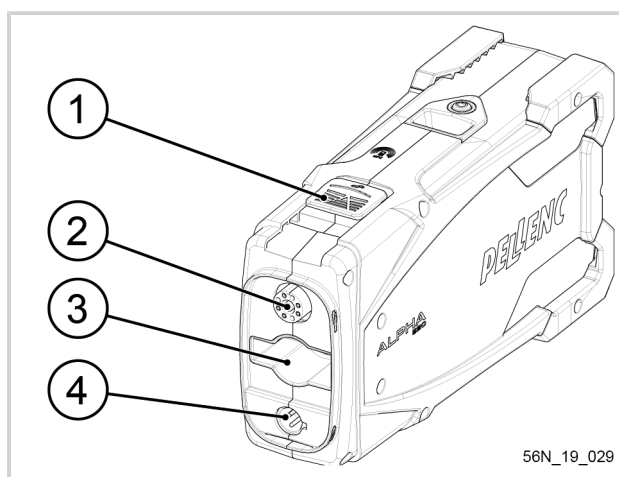
Battery		Alpha 260	Alpha 520
CB5022 Charger (2.2A)	70%	2 hrs	3 hrs 45 min
	100%	3 hrs 45 min	6hrs 30 min
CB5022HV charger (2.2 A)	70%	2 hrs	3 hrs 45 min
	100%	3 hrs 45 min	6hrs 30 min
Quick Charger CB5075 (7.6 A) <i>If after charging with the CB5075 charger the battery display indicates less than 95%, the next time the battery is charged it must be done with the original charger. The sticker shown below is affixed to the CB5075 charger as a visual reminder of this warning.</i>	70%	30 min	1 h
	100%	1 hr 45 min	2 hr 30 min



3.3. DESCRIPTION

Battery

1. Safety lock
2. Picker power connector
3. Tool interface
4. Charging connector



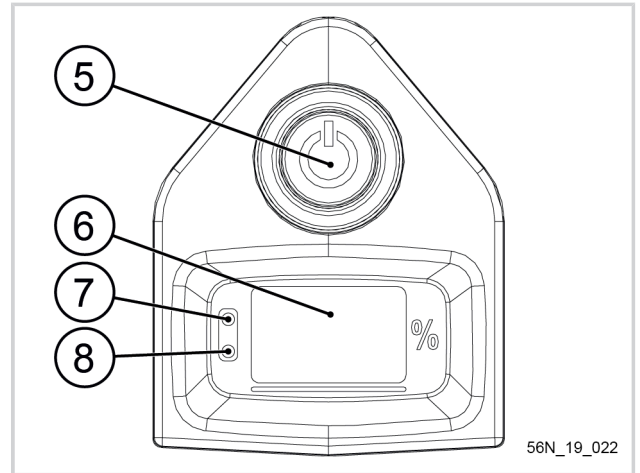
56N_19_029

Battery display

- 5. On/Off button
- 6. Display
- 7. Battery power indicator light
- 8. Battery charging indicator light

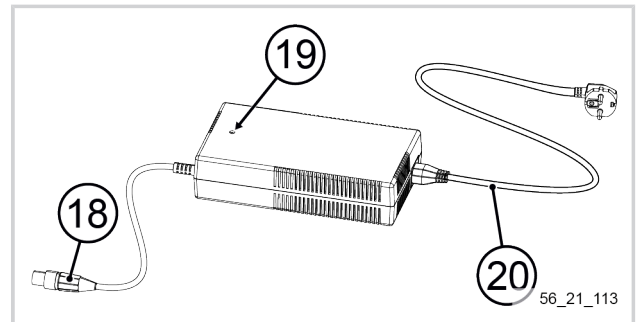
Note

See details of the battery display in Section 4, "Commissioning" of the operating instructions supplied with the battery.



Charger (not supplied with the tool)

- 9. Charging connector
- 10. Indicator light
- 11. Power cord



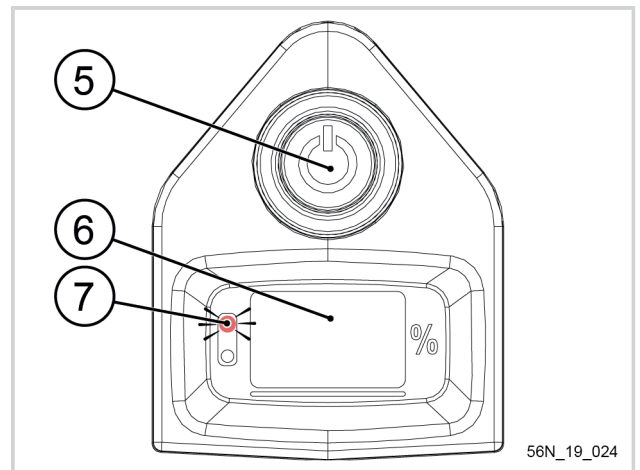
4. COMMISSIONING

4.1. BATTERY DISPLAY

The battery has a gauge display showing the remaining capacity it holds. The capacity is expressed as a percentage.

- If the gauge display shows 99, the battery is fully charged.
- If after a day's work the display shows 55, there is no need to recharge the battery before another day of work.
- If the display shows 00, or very close to it, it must be recharged at once.
- The battery gauge must be used like a fuel gauge on a car.
- While using the tool, the battery display may show -- to avoid duplicating the tool display.

When the battery is turn on with the on/off button (5), the battery on LED (7) shows fixed red on the display. If the battery power LED (7) flashes after 5 seconds, this means the battery is waiting for a tool to be attached with a quick connector.



4.2. CHARGING THE BATTERY

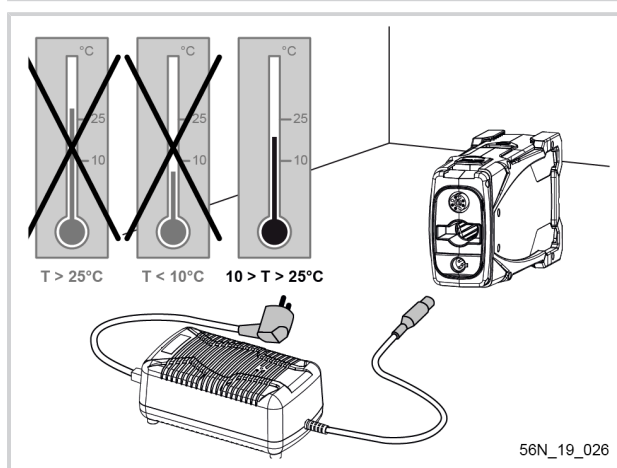
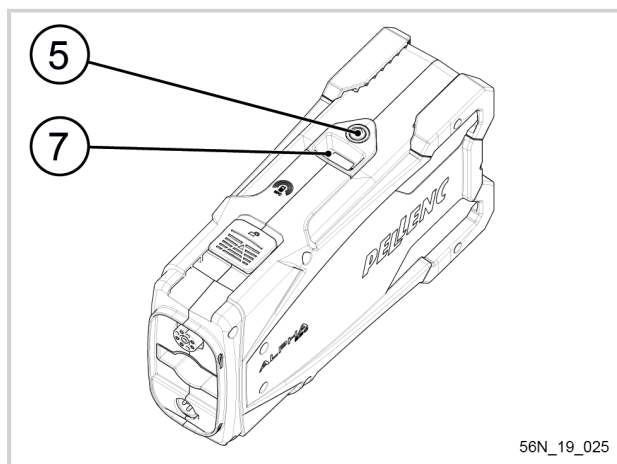
When the battery is discharged, the tool stops automatically, the battery gauge display (6) shows 0% and the buzzer beeps intermittently (see Section 6.1, "Summary of HMI display and BIP messages").

Press the on/off button (5) at once to turn the battery off. When the battery is turned off, the battery power LED (7) disappears.

Note

Before using the battery for the first time at the start of a new season, it must be fully charged (99% steady).

Place the charger and battery in a dry, ventilated and dust-free room at 10#25°C. Place the battery in a stable position.

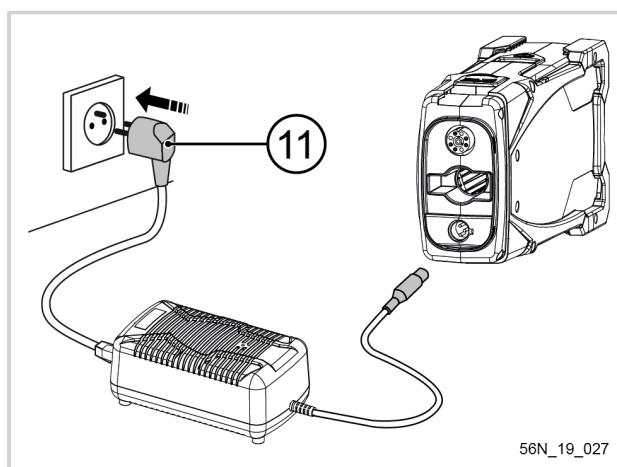


Caution

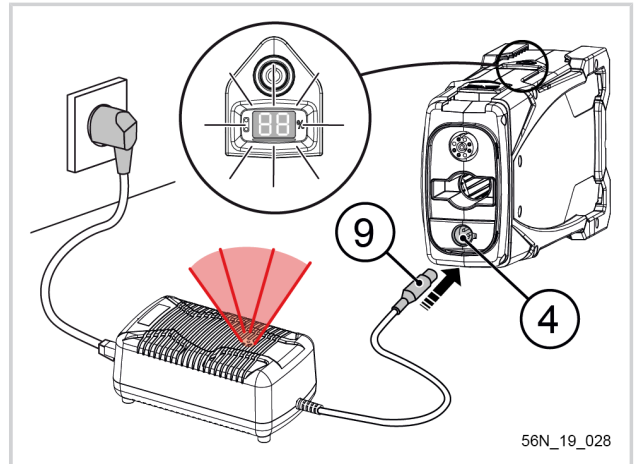
Before connecting the charger to the mains, check that your power system characteristics comply with the specifications given on the charger (see Section 3.2, "Technical characteristics - Charger").



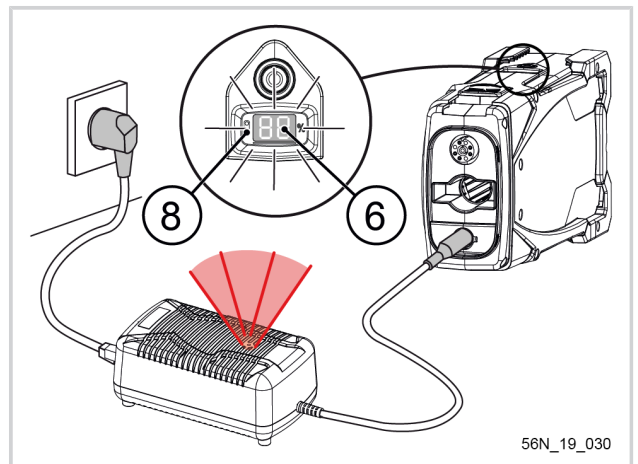
Connect the charger power connector (11) to the electrical power outlet. The charger LED lights up green.



Connect the charging cord (9) to the battery's charging connector (4). An audible "beep" indicates the charger is properly connected.



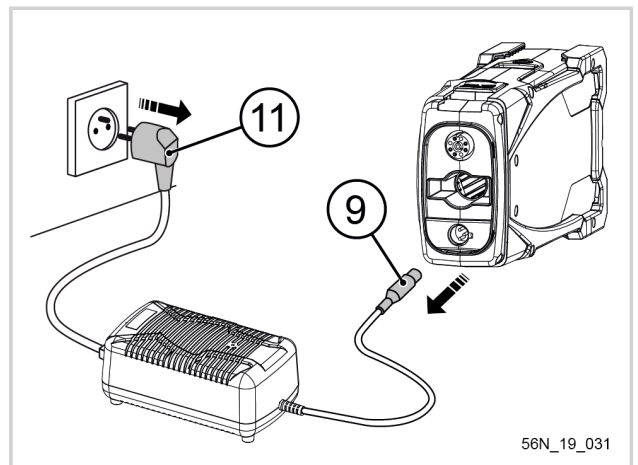
When the gauge display (6) flashes, the battery is charging. Charging is complete when the message 99 appears steadily on the gauge display (6). The battery charging LED (8) lights up orange to indicate the battery is charging. It flashes while charging, and shows steady when the charging is completed.



Once the battery is charged, disconnect the charging lead on the battery first (9), then the charger power connector (11).

Note

After a long storage period (new battery, winter storage etc.), when you disconnect the charger, the charge level indicator may display a value of less than 99%. This is a normal phenomenon which can reoccur for up to 5 charge cycles with normal use between each charge.



4.3. CHARGING ON THE WALL-MOUNTED CHARGING STATION

Refer to operating instructions reference 145442 provided with the wall-mounted charging station.

4.4. FITTING THE BATTERY ON THE HARNESS AND CONNECTING THE TOOL

Refer to operating instructions reference 145444 provided with the harness.

4.5. QUICK BATTERY CONNECTION AND DISCONNECTION

4.5.1. BATTERY CONNECTION



Warning

Be sure to keep your fingers out of the connection area between the tool and the battery.

Important

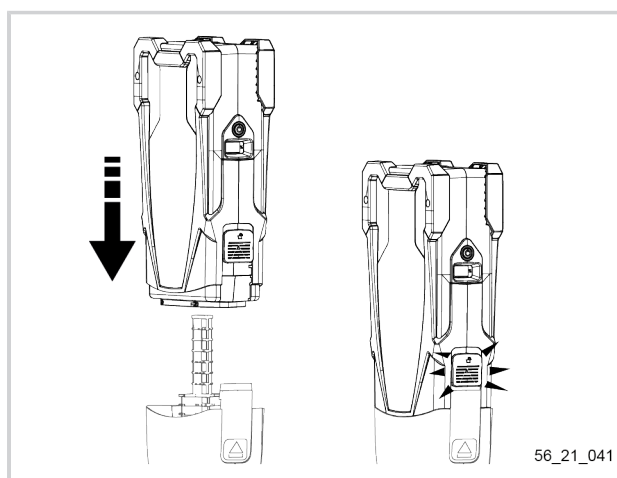
Check that there is no foreign matter in the connection area between the tool and the battery.

1. Position the battery with the digital display of the battery facing up.
2. Push in the battery until the locking clip engages and the safety lock is closed.



Warning

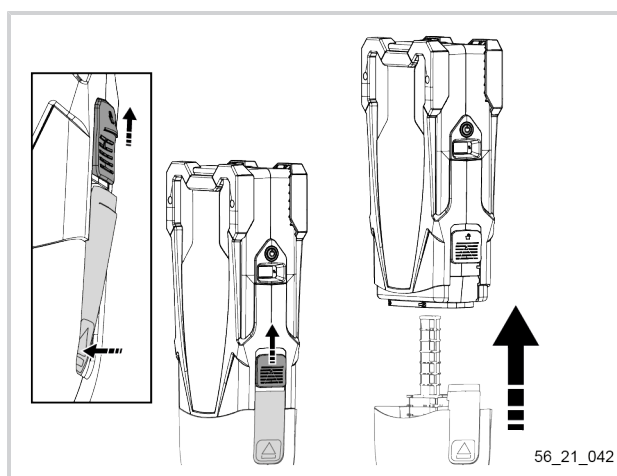
The lock prevents unintentional disconnection. Do not start the tool without checking that the clip is locked.



56_21_041

4.5.2. DISCONNECTING THE BATTERY

1. Pull the security lock to open it.
2. Press the locking clip while keeping the safety lock open.
3. Remove the battery.



56_21_042

4.6. SWITCHING THE BATTERY ON AND OFF

The battery is not in stand-by mode:

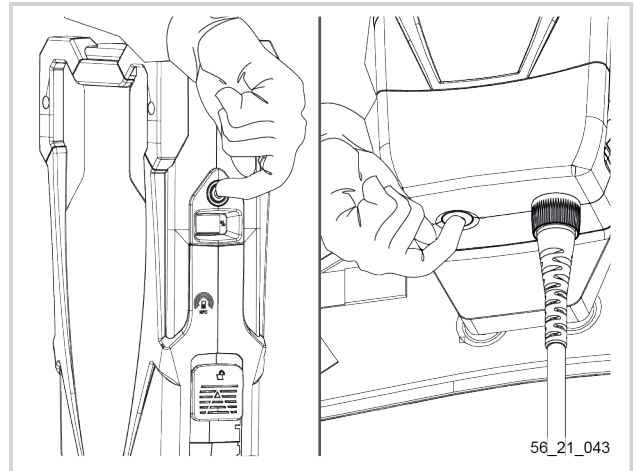
Note

The battery is not in stand-by mode when data appears on the display.

When the battery is installed in the tool: press the on/off button on the battery or the tool on/off button (if compatible, see tool operating instructions) for one second (the battery will beep).

If the battery is installed on the harness: use the remote button.

- Press the remote button (1) for one second until you hear a “beep”.



The battery is in stand-by mode:

Note

The battery is in stand-by mode when the display is completely switched off.

1. Exit stand-by mode by pressing on the battery on/off button.
2. Turn on the battery:
 - When the battery is installed in the tool: press the on/off button on the battery or the tool on/off button (if compatible, see tool operating instructions) for one second (the battery will beep).
 - If the battery is installed on the harness: use the remote button.
 - Press the remote button (1) for one second until you hear a “beep”.

5. MAINTENANCE

5.1. MISCELLANEOUS MAINTENANCE BATTERY







The battery must not be connected to the charger or the tool, the switch must be in the off position. Disconnect the battery before cleaning. Clean the battery casing with a soft cloth and water.













5.2. MISCELLANEOUS MAINTENANCE CHARGER








Disconnect the charger before cleaning it. Clean the charger casing with a soft cloth and water.

6. INCIDENTS AND TROUBLESHOOTING

6.1. SUMMARY OF HMI DISPLAY AND BIP MESSAGES

Normal messages	
Use	
 fixed	Battery charge level (0 to 99)
 with 1 beep per minute	Battery empty, recharge immediately
 flashing with 1 beep every 10 seconds	Stop using, recharge immediately. Only on ALPHA batteries connected to an ALPHA Tool.
 Flashing	Display off to avoid duplication with tool display
Charging	
 flashing every 4 seconds	Battery charge level (0 to 99)
 fixed	Charging complete
Storage	
Off	Standby

Degraded mode messages	
Use	
 and  alternately	Stop the tool; the battery temperature is too high
 and  and  alternately	Stop the tool; the battery temperature is too low
	Electronic board out of order
	Electronic board not configured
 fixed	Cell voltage too low
Long beep and 1 short beep	Tool stop: tool intensity too high
Long beep and 2 short beeps	Incompatible tool detected
Long beep and 4 short beeps	Stop the tool; the tool temperature is too high
Charging	
 and  alternately	Charge interrupted: Battery temperature too low
 and  alternately	Charge interrupted: Battery temperature too high

Fault messages	
Use	
 and 1 beep every 2 minutes for 24 hours	Voltage too low after 3 hours of non-use. Recharge battery immediately
	Electronic board out of order
	Short circuit on the tool connector
Long beep and 5 short beeps	Loss of connection, tool not detected
Charging	
 and  alternating and continuous beep	Battery problem
 and  alternately	Charger problem

6.2. TROUBLESHOOTING

If your tool no longer works:

1. Turn the battery off using the on/off button (5).
2. Check the battery is charged, as shown on the gauge display (6).
3. Check the lead is connected and the cable thumb-wheel tightened.
4. Check that the battery is properly clipped to the tool.
5. Turn the battery on using the on/off button (5). Press the trigger and the safety lock (depending on the tool).
6. If the tool does not work, return the complete equipment in its original packaging to a certified repair service.

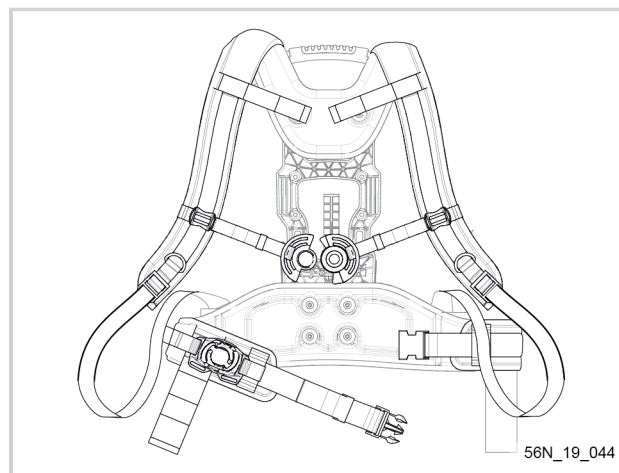
7. STORAGE AND TRANSPORT

- Store the “battery” unit and charger away from heat, dust and humidity, after turning off the battery using the on/off button (5).
- Never store the battery at an ambient temperature of more than +45 °C.
- **In order to conserve a long battery life and prevent deterioration, the battery must be charged when stored and recharged every 24 months if it is not used.**
- Never operate the on/off switch (5) during storage.
- Battery life is guaranteed by storage in a dry place at a steady temperature between 0 and 25 °C.
- No combustible object must be placed within 1.5 metres of the battery.
- **If the battery is not used for 10 days, the battery will automatically discharge until it reaches its storage charge rate, then goes to standby. It will heat up during this phase.**
- The charger is maintenance-free.

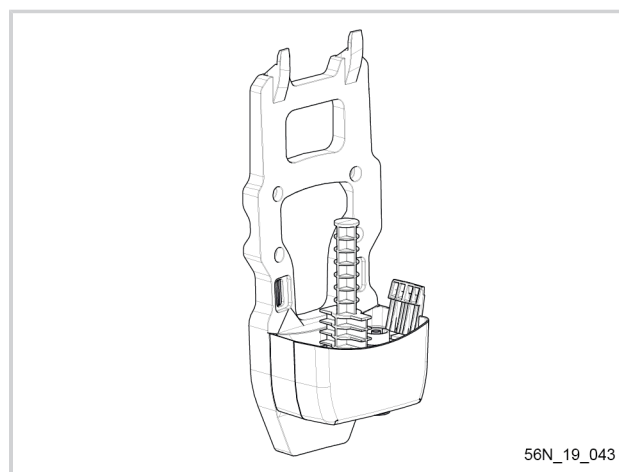
8. ACCESSORIES AND CONSUMABLES

8.1. ACCESSORIES (NOT SUPPLIED WITH THE BATTERY)

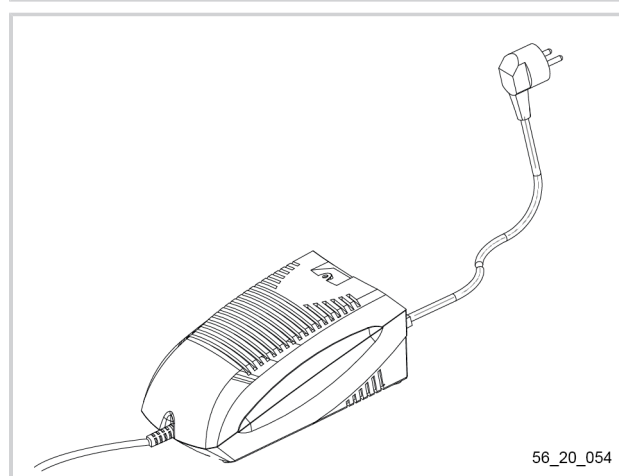
Harness (ref.: 57194)



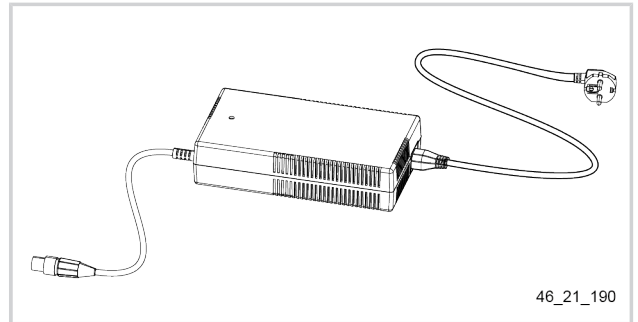
Wall-mounted charging station (ref.: 57240)



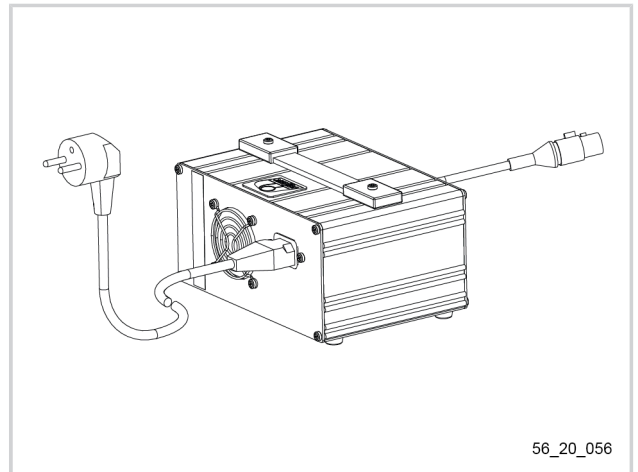
CB5022 Charger (ref.: 57230)



CB5022HV Charger (ref.: 57256)



CB5075 Quick charger (ref.: 57213)



9. WARRANTIES

9.1. GENERAL WARRANTIES

9.1.1. STATUTORY WARRANTY

9.1.1.1. LATENT DEFECTS WARRANTY

Apart from the commercial warranty provided for under Article II, Article 1641 of the Civil Code provides that "the seller is bound to a warranty on account of latent defects of the object sold which render it unfit for the use for which it was intended, or which would impair said use to the extent that the buyer would not have acquired it, or would only have given a lesser price for it, had he known of them".

Article 1648 of the Civil Code "The action resulting from latent defects must be brought by the purchaser within two years after the discovery of the defect."

9.1.1.2. LEGAL WARRANTY OF CONFORMITY

Article L.217-4 of the French Consumer Code "The seller delivers goods in conformity with the contract and is liable for defects of conformity existing upon delivery".

The seller is also liable for any lack of compliance resulting from the packaging, assembly or installation instructions whenever its contractual liability is engaged in this regard or the latter are carried out under its responsibility.

Article L.217-5 of the French Consumer Code "Goods are compliant with the contract":

1. Where they are fit for the purpose normally expected of similar goods and, where applicable:
 - If it matches the description given by the seller and possesses the qualities that were presented to the purchaser in the form of a sample or model;

- If it possesses the qualities that a purchaser can reasonably expect given the public statements made by the seller, the producer or its representative, especially in advertising or labelling;
2. Or, if it has the characteristics defined by mutual agreement of the parties or is fit for any particular purpose that the buyer made known to the seller and that the latter accepted.

Article L.217-12 of the Consumer Code "legal action resulting from lack of conformity lapses two years after delivery of the goods".

9.1.2. COMMERCIAL WARRANTY PELLENC

9.1.2.1. CONTENT

9.1.2.1.1. GENERAL INFORMATION

In addition to legal warranties, client users benefit from the commercial warranty on products PELLENC covering the exchange and replacement of parts recognised as being out of order, due to machining defects, assembly defects or material defects, whatever the cause.

The warranty is fully integral to the product sold by PELLENC.

9.1.2.1.2. SPARE PARTS

The commercial warranty also covers original PELLENC spare parts, excluding labour and to the exclusion of certain parts of each product provided at delivery.

9.1.2.2. DURATION OF THE WARRANTY

9.1.2.2.1. GENERAL INFORMATION

PELLENC Products are guaranteed under the commercial warranty as from delivery to the customer for a period of two (2) years for products connected to a PELLENC battery, and for a period of one (1) year for other PELLENC products.

9.1.2.2.2. SPARE PARTS

PELLENC Replacement parts replaced under the product warranty are guaranteed under the commercial warranty as from delivery of the PELLENC product to the customer user for a period of two (2) years for products connected to a PELLENC battery, and for a period of one (1) year for other PELLENC products.

In the case of products connected to a PELLENC battery, parts that are replaced under the product warranty after the 12th month of use, are covered for a period of one (1) year.

9.1.2.2.3. WARRANTY EXCLUSIONS

Excluded from the commercial warranty are products that have been subject to abnormal use, or were used under conditions and for purposes other than those for which they were manufactured, especially in the case of non-compliance with conditions stipulated in this operating instructions manual.

It does not apply in case of shock, fall, neglect, lack of supervision or maintenance or in case of transformation of the product. Also excluded from the warranty are products that have been subject to tampering, alteration or modification by the customer user.

Wear parts and/or consumables cannot be covered by the warranty.

9.1.2.3. IMPLEMENTATION OF THE COMMERCIAL WARRANTY**9.1.2.3.1. PRODUCT COMMISSIONING AND COMMISSIONING DECLARATION**

No later than eight days after the delivery of the goods to the customer user, the DISTRIBUTOR shall complete the computerized declaration of commissioning form in order to activate the latter on the website www.pellenc.com, under the heading "extranet", menu "Pellenc Extranet Service", using the identifier previously issued by PELLENC.

Failing that, commissioning declaration will not be effective and implementation of the commercial warranty PELLENC will not occur. As a consequence thereof, the DISTRIBUTOR must ensure the financial burden of its intervention under the warranty without being able to pass on the cost to the client user.

The DISTRIBUTOR shall also undertake to complete the warranty card or the certificate of warranty and commissioning for self-propelled equipment provided with the product after having the client user sign and date it.

9.1.3. PAID AFTER-SALES SERVICE**9.1.3.1. GENERAL INFORMATION**

Malfunctions, breakdowns, breakages resulting from misuse, neglect or improper maintenance by the client user as well as malfunctions resulting from normal wear of the product are subject to the payment of after-sales service, even during the period of the legal and commercial warranty. After-sales service repairs that fall outside of the legal and commercial warranty also include maintenance, adjustments, diagnostics of all types, and cleaning without the present list being exhaustive.

9.1.3.2. WEAR PARTS AND CONSUMABLES

Wear parts and consumables also fall within the after-sales service.

9.1.3.3. SPARE PARTS

Paid after-sales service also covers original PELLENC spare parts, excluding labour and outside the legal and commercial warranty period.

In case of replacement of original PELLENC spare parts in the context of after-sales service, said latter are covered by a warranty of one year as from the installation date.

10. COMPLIANCE STATEMENTS

10.1. "EC" DECLARATION OF CONFORMITY: 260, 520 BATTERY

MANUFACTURER/ENTITY AUTHORISED TO COMPILE THE TECHNICAL FILE	PELLENC
ADDRESS	Quartier Notre-Dame - 84120 Pertuis (France)

We hereby declare that the product designated below as:

GENERIC DENOMINATION	PELLENC POWER TOOL BATTERY		
FUNCTION	DESIGNED TO POWER PELLENC BATTERY POWER TOOLS		
COMMERCIAL NAME	ALPHA RANGE		
TYPE	Lithium-ion BATTERY		
MODEL	ALPHA 260	ALPHA 520	
SERIAL No.	56W00001 - 56W49999	56X00001 - 56X49999	56Y00001 - 56Y49999

Complies with all the relevant provisions of the EMC Directive 2014/30/EU.

Complies with the provisions of the following European Directives:

- 2014/53/EU EMC Directive; 2011/65/EU ROHS Directive; 1907/2006 REACH Regulation; 2012/19/EU WEEE Directive

The following harmonized European standards were used:

- EN 62133-2 : 2017; EN 60529: 1991 + A2: 2013 + AC: 2019

SIGNED IN PERTUIS, ON
30/05/2022

JEAN-MARC GIALIS
CHIEF EXECUTIVE OFFICER



10.2. "UK" DECLARATION OF CONFORMITY: 260 & 520 BATTERIES

MANUFACTURER / ENTITY AUTHORIZED TO COMPILE THE TECHNICAL FILE	PELLENC
ADDRESS	Quartier Notre-Dame - 84120 Pertuis (France)

We hereby declare that the product referred to below as:

GENERIC DENOMINATION	PELLENC TOOL BATTERY		
FUNCTION	INTENDED TO POWER PELLENC PORTABLE POWER TOOLS		
COMMERCIAL NAME	ALPHA		
TYPE	LI-ION BATTERY		
MODEL	ALPHA 260	ALPHA 520	
SERIAL No.	56W00001 - 56W49999	56X00001 - 56X49999	56Y00001 - 56Y49999

Complies with the relevant provisions of the Electromagnetic Compatibility Regulations 2016.

Complies with the provisions of the following European directives:

- the Radio Equipment Regulations 2017 ; the Restriction of the Use of Certain Hazardous Substances in Electrical and Electronic Equipment Regulations 2012 ; 1907/2006 REACH Regulations ; the Waste Batteries and Accumulators Regulations 2009 ; the Batteries and Accumulators (Placing on the Market) Regulations 2008

The following harmonised European standards have been used in whole or in part:

- BS EN 62133-2:2017 ; BS EN 60529:1992+A2:2013

SIGNED IN PERTUIS, DATED 30/05/2022

JEAN-MARC GIALIS

Chief Executive Officer



PELLENC

   www.pellenc.com

PELLENC
Quartier Notre Dame - 84120 Pertuis (France)