

**ENG**

Translated from original



# GRASS STRIMMER EXCELION ALPHA

Operating Instructions

53\_144013\_D  
06/2023

**READ THE USER OPERATING GUIDE CAREFULLY BEFORE USE**



[www.pellenc.com](http://www.pellenc.com)

**PELLENC**



# TABLE OF CONTENTS

<b>1. INTRODUCTION .....</b>	<b>5</b>
<b>2. SAFETY &amp; SECURITY .....</b>	<b>6</b>
<b>2.1. GENERAL SAFETY WARNINGS .....</b>	<b>6</b>
2.1.1. TRAINING .....	6
2.1.2. PREPARATION .....	6
2.1.3. OPERATION .....	6
2.1.4. MAINTENANCE AND STORAGE .....	7
<b>2.2. SAFETY WARNINGS RELATING TO THE GRASS STRIMMER EXCELION ALPHA .....</b>	<b>7</b>
<b>2.3. SAFETY MEASURES RELATED TO THE USE OF THE PELLENC BATTERY AND CHARGER .....</b>	<b>8</b>
<b>2.4. SAFETY SIGNAGE .....</b>	<b>8</b>
<b>2.5. PERSONAL PROTECTION EQUIPMENT (PPE) .....</b>	<b>9</b>
<b>3. DESCRIPTION AND TECHNICAL FEATURES .....</b>	<b>10</b>
<b>3.1. DESCRIPTION OF THE TOOL .....</b>	<b>10</b>
<b>3.2. TECHNICAL CHARACTERISTICS .....</b>	<b>11</b>
<b>4. START-UP .....</b>	<b>12</b>
<b>4.1. CONTENTS OF THE KIT .....</b>	<b>12</b>
<b>4.2. FITTING/REMOVING THE SAFETY CASING .....</b>	<b>12</b>
4.2.1. FITTING THE PROTECTIVE GUARD .....	12
4.2.2. REMOVE THE PROTECTIVE GUARD .....	13
<b>4.3. FITTING AND DISMOUNTING THE ROUND HANDLE .....</b>	<b>13</b>
4.3.1. FITTING THE ROUND HANDLE .....	13
4.3.2. DISMOUNTING THE ROUND HANDLE .....	14
<b>4.4. CONNECTING PELLENC BATTERIES .....</b>	<b>15</b>
4.4.1. ALPHA 260 / 520 BATTERIES .....	15
4.4.2. ULIB 750 / 1200 / 1500 BATTERIES WITH COUNTERWEIGHT .....	15
<b>4.5. DISCONNECTING PELLENC BATTERIES .....</b>	<b>17</b>
4.5.1. ALPHA 260 / 520 BATTERIES .....	17
4.5.2. ULIB 750 / 1200 / 1500 BATTERIES WITH COUNTERWEIGHT .....	17
<b>5. USAGE .....</b>	<b>18</b>
<b>5.1. ADJUSTING THE WORKING POSITION .....</b>	<b>18</b>
5.1.1. ADJUSTING THE ROUND HANDLE .....	19
5.1.2. ADJUSTING THE CARRYING STRAP .....	20
<b>5.2. SWITCHING ON PELLENC BATTERIES .....</b>	<b>21</b>
5.2.1. ALPHA 260 / 520 BATTERIES .....	21
5.2.2. 750 / 1200 / 1500 ULIB BATTERIES .....	21
<b>5.3. SWITCHING OFF PELLENC BATTERIES .....</b>	<b>22</b>
5.3.1. ALPHA 260 / 520 BATTERIES .....	22
5.3.2. 750 / 1200 / 1500 ULIB BATTERIES .....	23
<b>5.4. ADJUSTING THE CUTTING SPEED .....</b>	<b>23</b>

5.4.1. CUTTING SPEED RECOMMENDATIONS .....	23
5.4.2. SPEED SELECTION .....	24
<b>5.5. DÉMARRAGE .....</b>	<b>24</b>
<b>5.6. ADJUSTING THE LENGTH OF THE STRIMMER WIRE .....</b>	<b>25</b>
<b>5.7. TIPS FOR USE AND STRIMMING TECHNIQUES .....</b>	<b>25</b>
5.7.1. BASIC MOWING/STRIMMING .....	26
5.7.2. STRIMMING ON SLOPES .....	26
5.7.3. STRIMMING ALONG WALLS, FENCES, AROUND TREES AND FLOWER BEDS .....	27
<b>6. MAINTENANCE .....</b>	<b>28</b>
6.1. MAINTENANCE ADVICE .....	28
6.2. MAINTENANCE TABLE .....	28
6.3. MOUNTING/REMOVAL .....	28
6.3.1. REMOVING AND MOUNTING THE ALPHA CUT CUTTING HEAD .....	28
6.3.2. FITTING THE STRIMMER WIRE .....	30
6.4. CLEANING .....	32
<b>7. INCIDENTS AND TROUBLESHOOTING .....</b>	<b>33</b>
7.1. TABLE OF INCIDENTS AND BREAKDOWNS - TROUBLESHOOTING .....	33
7.2. SUMMARY OF DISPLAY SCREEN MESSAGES .....	34
7.3. THERMAL SAFETY SHUTDOWN .....	35
<b>8. STORAGE AND TRANSPORT .....</b>	<b>36</b>
8.1. STORAGE .....	36
8.2. TRANSPORT .....	36
<b>9. ACCESSORIES AND CONSUMABLES .....</b>	<b>36</b>
9.1. ACCESSORIES INCLUDED .....	36
9.2. OPTIONAL ACCESSORIES .....	37
9.3. CONSUMABLES .....	38
9.3.1. TAP CUT WIRES .....	38
<b>10. WARRANTIES .....</b>	<b>38</b>
10.1. GENERAL WARRANTIES .....	38
10.1.1. STATUTORY WARRANTY .....	38
10.1.2. COMMERCIAL WARRANTY PELLENC .....	39
10.1.3. PAID AFTER-SALES SERVICE .....	40
<b>11. COMPLIANCE STATEMENTS .....</b>	<b>41</b>
11.1. "EC" DECLARATION OF CONFORMITY: EXCELION ALPHA .....	41

## 1. INTRODUCTION

Dear Customer,

Thank you for purchasing your Grass strimmer Excelion Alpha. Properly used and maintained, this equipment will give you years of satisfaction.



### Warning

Your equipment comprises numerous materials which can be valorised or recycled. Return it to your dealer or, failing this, to an approved servicing centre to be treated.



Comply with the regulations in force in your country as concerns environmental protection associated with your activity.



### Warning

It is imperative that you read through the ENTIRE user's manual guide before using or servicing the tool. Always comply with the instructions and illustrations in the manual.


Throughout the user's manual guide you will find advisory notes and information entitled: NOTE, IMPORTANT, ATTENTION and WARNING.

Points marked "NOTE" indicate additional information.

Points marked 'IMPORTANT' warn the user of a potential risk for the equipment.

Points marked "ATTENTION" warn the user of a potentially hazardous situations which if not avoided may result in minor injuries.

Points marked "WARNING" warn the user of a potentially hazardous situation which if not avoided may result in serious injury or death.

Warning  indicates the guarantee will not cover any damage resulting from failure to comply with the procedures and instructions, for which the owner will incur the repair costs.

Safety signs on the picker also indicate the safety precautions to be observed. Locate these signs and read them before using your machine. Any partially illegible or damaged sign should be replaced immediately.

Refer to 2.4. Safety signage, page 8 for the location diagram of the safety stickers affixed to the tool.

No part of this manual may be reproduced without the written permission of the company PELENC. The illustrations provided in this manual are for information purposes only and are in no way contractual. The PELENC company reserves the right to make any modification or improvement to its products as deemed necessary without informing customers already in possession of a similar model. This manual is an integral part of the tool and must accompany it in case of transfer.

## 2. SAFETY & SECURITY

### 2.1. GENERAL SAFETY WARNINGS



#### Warning

**Read all safety warnings, instructions, illustrations and specifications provided with this power tool.** Failure to follow all instructions listed below may result in electric shock, fire and/or serious injury.

#### Note

**Retain all the safety measures and instructions for later reading.**

This device is not intended for use by individuals (including children) with reduced physical, sensory or mental capabilities, nor by anyone lacking in experience or knowledge, except if they are supervised or have received prior instructions from a person responsible for their safety.

- Your Grass strimmer Excelion Alpha is a professional tool whose use is reserved exclusively for cleaning of green spaces (grass, dense grasses, woody weeds and brambles).
- The PELLENC SAS company accepts no responsibility for any damage caused by improper or unspecified use different from its original intention.
- The PELLENC SAS company accepts no responsibility for any damage caused by the use of non-original parts or accessories.

Operating rules to be respected for your safety when using lawn mowers with electric motors.

#### 2.1.1. TRAINING

1. Read the instructions carefully. Become familiar with the controls and the proper use of equipment.
2. Never allow children or individuals who are unfamiliar with these instructions to use the machine. National regulations may restrict operator age.
3. Never operate the machine while other people, especially children, or pets, are nearby.
4. Keep in mind that the operator or user is responsible for any accidents caused by them and the dangers that other people or their property may run.

#### 2.1.2. PREPARATION

1. During operation of the machine, always wear protective footwear and long trousers. Do not operate the machine barefoot or in sandals. Avoid wearing loose clothing or items with loose cords, or a tie.
2. Inspect the entire area where the machine will be used and remove all objects that might be thrown by it.
3. Before use, always visually inspect the machine to ensure that its cutting elements, bolts and the assembly in general, are not worn or damaged. Replace sets of worn or damaged components in order to maintain proper balance. Replace damaged or difficult to read labels.
4. Before use, check the power cable to detect signs of damage or aging. Immediately disconnect the battery if the cable becomes damaged during use. **Do not touch the cable before turning off the battery.** Do not use the machine if the cable is damaged or worn.

#### 2.1.3. OPERATION

1. Only operate the machine in daylight or in good artificial light. Use safety equipment. Always wear eye protection.
2. Avoid operating the machine on wet grass. Remove any adjusting wrenches before switching the tool on.

3. Always place your feet firmly when on slopes.
4. Walk, never run.
5. Mow transversely on slopes, never up and down.
6. Be very careful when changing direction on slopes.
7. Do not mow excessively steep slopes.
8. Use the machine with extreme caution when using it in reverse or pulling it toward you.
9. Turn off the cutting elements if the machine has to be tilted for transport through non-grassy areas and when it has to be transported to or brought back from the location where it is to be used.
10. Never use the machine with defective guards or without safety devices in place, for example deflectors and/or grass catchers.
11. Start the engine, drive carefully according to instructions and with your feet at a safe distance from the cutting elements.
12. Do not put hands or feet near or under rotating parts. Never allow the ejection opening to get clogged.
13. Do not transport the machine while the power source is attached.
14. To stop the machine, turn off the battery and remove the battery connector. Make sure all moving parts have completely stopped.
15. Stop the machine and remove the power-off device. Make sure all moving parts have completely stopped
  - before leaving the machine,
  - before cleaning any jams, or emptying the chute,
  - before checking, cleaning or repairing the machine,
  - after hitting an object inspect the machine to detect any damage and carry out repairs before restarting and using it.

If the machine begins to vibrate abnormally, it is essential at once to:

- inspect the machine to see if it is damaged,
- check if any parts have worked loose, and tighten them if necessary,
- repair or replace any damaged parts.

#### 2.1.4. MAINTENANCE AND STORAGE

1. Make sure all nuts, bolts and screws are kept tight to be sure that the equipment is in good operating condition.
2. Check for wear or damage to the grass catcher frequently.
3. Replace worn or damaged parts so that the machine remains safe.
4. Take all precautions necessary when it comes to multi-blade machines, since the rotation of one cutting element can cause all the others to rotate.
5. When adjusting the machine, avoid getting fingers caught between the moving blades and the fixed parts.
6. Always allow the machine to cool down before storing.
7. Pay attention during routine maintenance of the cutting elements, as they may still be moving, even if the power source is cut off.
8. Replace worn or damaged parts so that the machine remains safe. Only use certified spare parts and accessories.

#### 2.2. SAFETY WARNINGS RELATING TO THE GRASS STRIMMER EXCELION ALPHA

1. Clear the work zone of all obstacles (glass, stone, metal, waste, and other solid objects) as they can be projected when working with the cutting tool.
2. Never use the Grass trimmer Excelion Alpha with only one hand.
3. Always use the machine with the cutting head parallel to the ground. The safety guard no longer provides sufficient protection if the angle of the cutting head is excessive. This can increase the risk of injury from flying debris.
4. Stop the Grass trimmer Excelion Alpha immediately if the cutting tool starts to behave differently (change in noise, increased vibrations). Check that the cutting tool is properly attached and verify its condition (no distortion, sufficiently sharp). Replace any damaged cutting tool as it can explode and cause serious, even fatal injuries.
5. CAUTION! The cutting tool continues rotating for a few seconds after the control trigger has been released. Always keep your hands and feet clear of the rotating cutting tool.
6. **Strimmer wire**
  - Never remove the blade installed in the safety guard as it trims the strimmer wire to the appropriate length.

- Never use metal wire or any other material instead of the nylon trimmer wire. Metal wire is likely to break and be projected, causing serious injuries.
  - Only use nylon trimmer wire recommended byPELENCwith a max. diameter of 3 mm.
7. Put on the harness and carrying strap of the tool.

## 2.3. SAFETY MEASURES RELATED TO THE USE OF THE PELENC BATTERY AND CHARGER

Refer to the instructions supplied with the PELENC battery and charger.

## 2.4. SAFETY SIGNAGE



LWA sound power level guaranteed.



Please read the operating instructions.



Wearing of safety goggles, hearing protection and a helmet is compulsory.



Wearing of gloves, safety trousers and safety shoes is compulsory.



Safety distance of 15 m is compulsory.



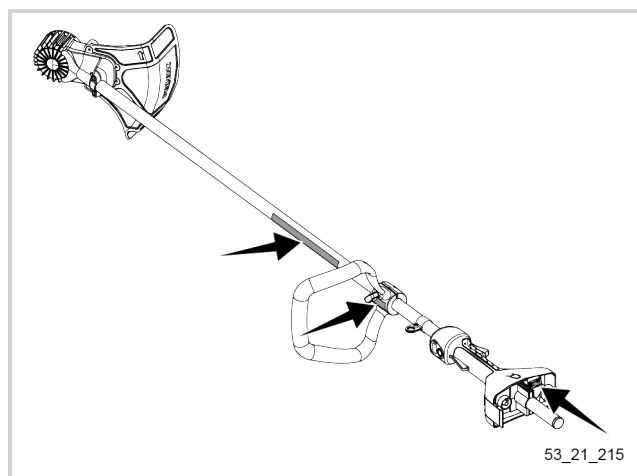
Be sure to check the direction and speed of rotation of the cutting head.



Risk of flying debris.



Do not use a blade.



Orientation direction of the round handle (see 4.3. Fitting and dismounting the round handle, page 13).



Orientation direction of the round handle (see 4.3. Fitting and dismounting the round handle, page 13).



Tool compliant with EC standards.



Tool compliant with British standards



Tool compliant with Moroccan standards.





IP54 protection index for the tool in working position with battery or counterweight (Protection against dust and water projections in all directions).

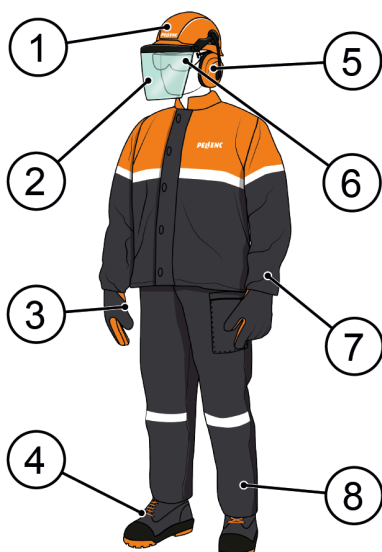


#### Electrical and electronic waste

At the end of their service life, the tool and the battery must be returned to the authorised distributor from which they were purchased, in order to be recycled in compliance with waste regulations.

## 2.5. PERSONAL PROTECTION EQUIPMENT (PPE)

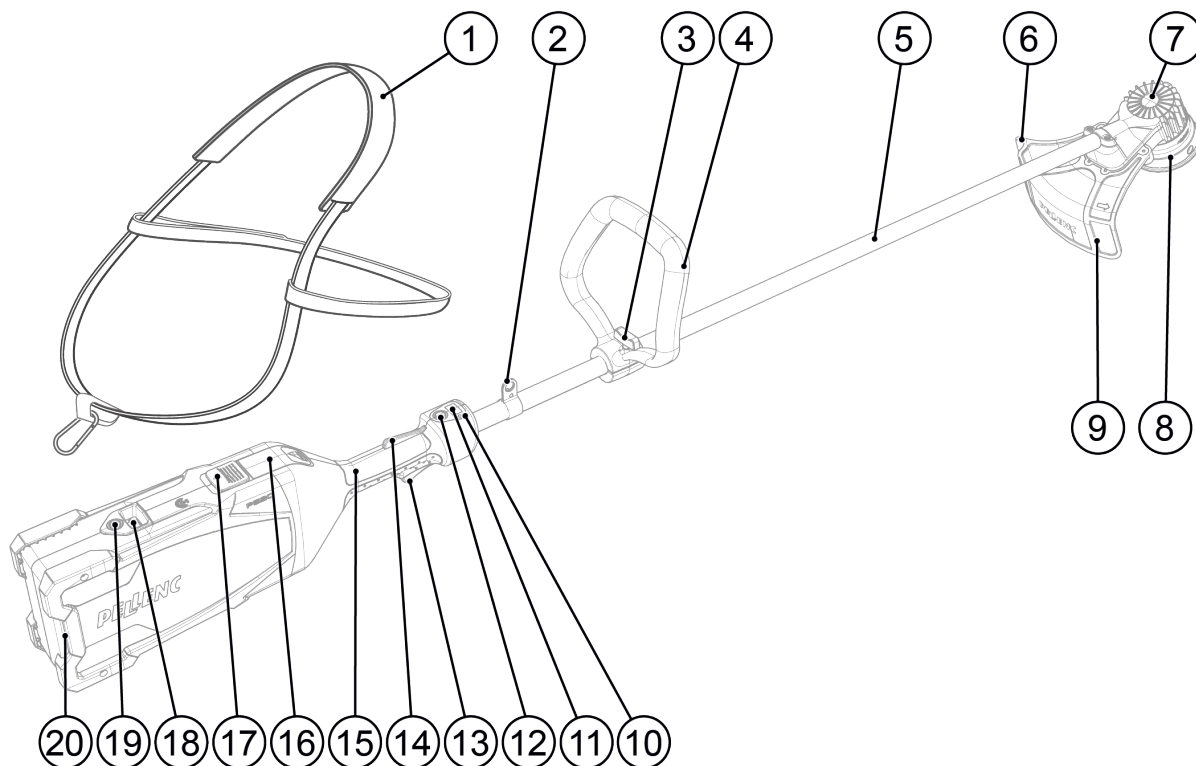
	Equipment	Wearing of	Description
1	Safety helmet	Recommended	Mandatory if there is a risk of falling objects.
2	Protective visor	Recommended	Risk of projections.
3	Resistant work gloves	Recommended	Risk of projections.
4	Robust, non-slip safety shoes	Required	When operating the machine, always wear non-slip safety shoes. Do not operate the machine in bare feet or with sandals.
5	Hearing protection	Required	Wear approved hearing protection with sufficient noise attenuation. Prolonged exposure to noise can cause permanent hearing damage.
6	Safety goggles	Required	Wear approved eye protection.
7	Jacket or over-sleeves	Recommended	Risk of projections.
8	Work trousers	Recommended	Always wear clothing that covers the operator's legs when the machine is in operation.



00\_20\_028

### 3. DESCRIPTION AND TECHNICAL FEATURES

#### 3.1. DESCRIPTION OF THE TOOL



53\_20\_033

1. Carrying strap.
2. Carrying eyelet: allows attachment of the carrying strap.
3. Round handle knob: used to lock the round handle position.
4. Round handle: helps guide the grass strimmer.
5. Tube.
6. Strimmer wire-cutter plate: Automatically cuts the strimmer wire to the recommended length.
7. Motor protective casing: protects the motor and the electronic board, and dissipates heat.
8. ALPHA CUT cutting head.
9. Protective guard: limits the projection of solid objects (stones, pieces of metal) towards the operator.
10. LEDs: display the selected speed.
11. Tool handle digital display: displays information related to the battery and the tool (Charge rate, faults, etc.).
12. Tool handle On / Off button: used to turn the tool on or off, and to select the speed.
13. Control trigger: allows the rotational speed of the cutting head to be progressively increased/decreased.
14. Safety trigger: prevents inadvertent actuation of the control trigger.
15. Handle.
16. Battery locking clip.
17. Battery safety lock.
18. Digital battery display: displays information related to the battery.
19. Battery On / Off button: turns the battery on or off.
20. Battery Alpha 260 / Alpha 520 (supplied separately).

### 3.2. TECHNICAL CHARACTERISTICS

Model	<b>EXCELION ALPHA</b>
Power	900 W
Power supply voltage	43.2 V
Weight (excluding cutting head and safety casing)	2.6 kg
Weight with cutting head and safety casing	3.1 kg
Dimensions (L x W x H) in mm (excluding battery)	1715 x 272 x 379
Dimensions (L x W x H) in mm with battery	1890 x 272 x 379
Dimensions (L x W x H) in mm with counterweight	1776 x 272 x 379
Cutting diameter	400 mm
Rotational speeds	2,000 to 6,400 rpm
Average	According to use and battery type

\* Optimal operation will be achieved with a Pellenc ALPHA 260 or 520 battery.

Determination of the noise levels and vibration rates is based on the operating conditions at the nominal maximum speed.

Maximum weighted sound pressure level A (ref. 20 $\mu$ Pa) at the user's position (uncertainty of K = 1.5 dB)	$L_{pa} = 79\text{dB (A)}$	K = 2.5 dB(A)
Weighted peak sound pressure level C (ref. 20 $\mu$ Pa) at the user's position	$L_{pC} < 130 \text{ dB(C)}$	

Values determined according to the acoustic measurement standards EN 506362-9-1, EN 11201 and EN 3744.

Symbol	Value	Unit	Reference	Comments
$L_{WAm}$	92	dB(A)	1 pW	Measured sound power level
$L_{WAg}$	94	dB(A)	1 pW	Guaranteed sound power level

Vibration emission values according to EN 50636291.

	Values on control handle in $\text{m/s}^2$	Values on round handle in $\text{m/s}^2$
Speed 1	0.68	1.87
Speed 2	0.78	1.73
Speed 3	0.69	1.67

\*Measurement uncertainty: K = 1.5  $\text{m/s}^2$

## 4. START-UP

For information about mandatory PPE when handling your tool, refer to 2.5. Personal Protection Equipment (PPE), page 9.

### 4.1. CONTENTS OF THE KIT

Make sure the kit contains:

- A grass strimmer fitted with:
  - 1 ALPHA CUT cutting head (8)
  - 1 spool of Ø 2.4 mm strimmer wire
  - 1 carrying eyelet (2)
  - 1 carrying strap (1)
  - 1 round handle (4)
- 1 protective safety casing and its 4 screws (9)
- 1 Torx 25 wrench
- 1 operating instructions manual
- 1 warranty notice

### 4.2. FITTING/REMOVING THE SAFETY CASING

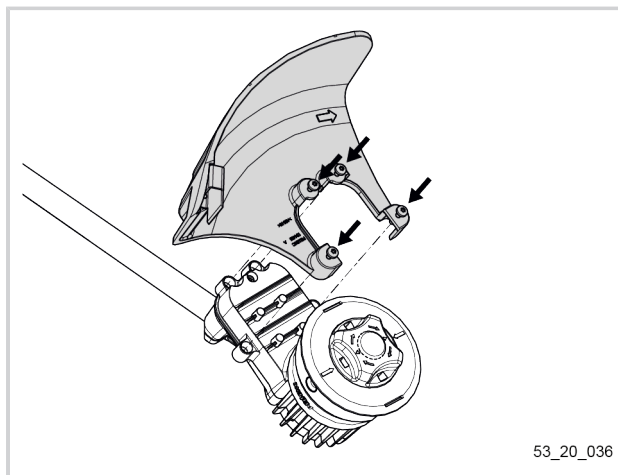


#### Caution

Always disconnect the battery before performing maintenance on the cutting head.

#### 4.2.1. FITTING THE PROTECTIVE GUARD

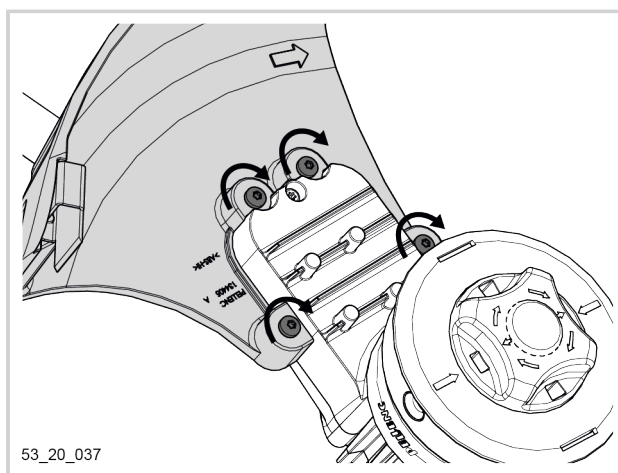
1. Position the protective guard and the 4 screws.



2. Tighten the 4 screws to a torque of 3.5 N.m using a T 25 screwdriver.

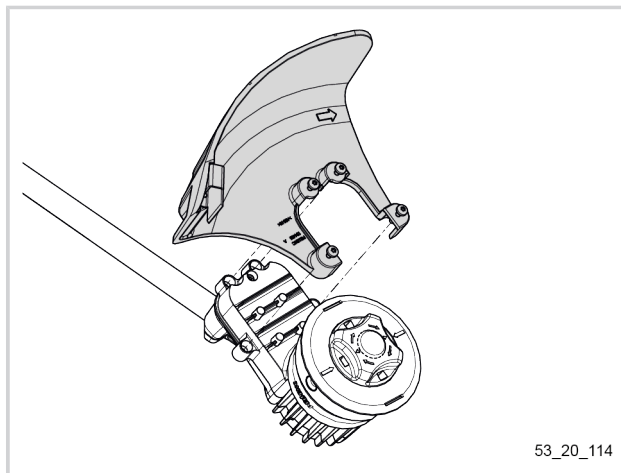
 T25 screwdriver

 3.5 Nm



#### 4.2.2. REMOVE THE PROTECTIVE GUARD

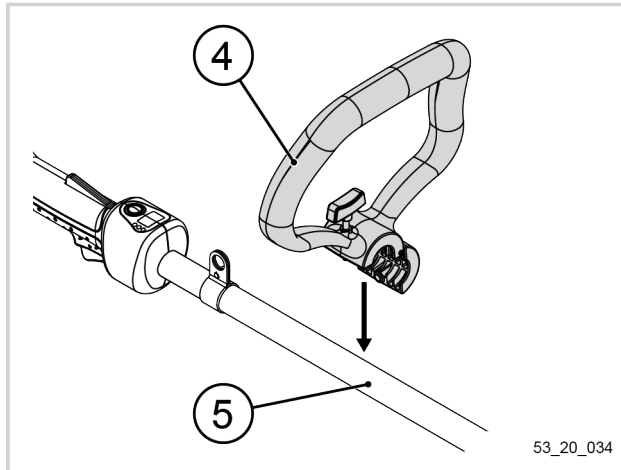
1. Unscrew the 4 screws using a T25 screwdriver.
2. Remove the protective guard and the 4 screws.



#### 4.3. FITTING AND DISMOUNTING THE ROUND HANDLE

##### 4.3.1. FITTING THE ROUND HANDLE

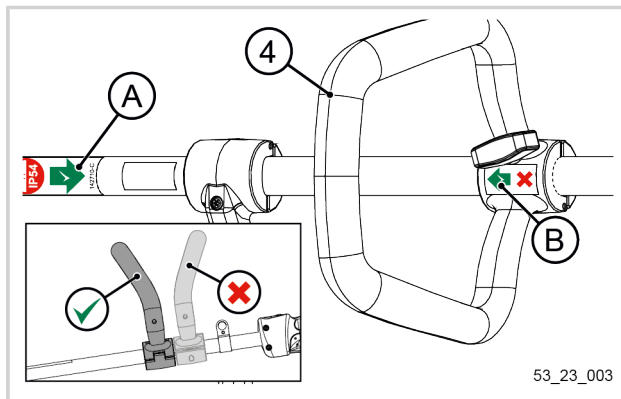
1. Position the round handle (4) on the tube (5).



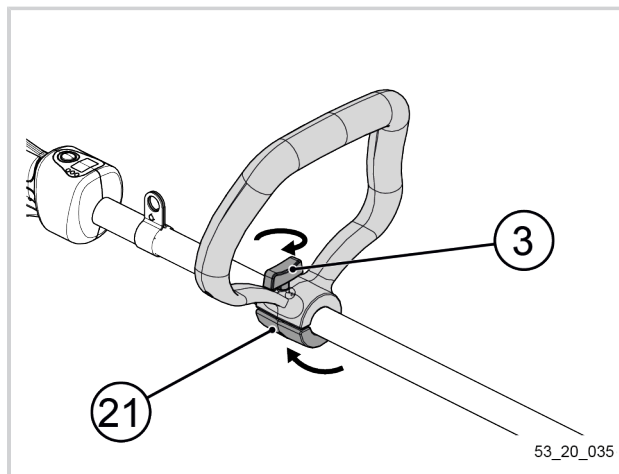
#### Caution

Depending on the tool version:

1. The tip of the green arrow (B) on the round handle (4) should point in the direction of the green arrow (A) on the tube (5).
2. In the absence of any visual indication, the curve of the handle should point towards the cutting head.

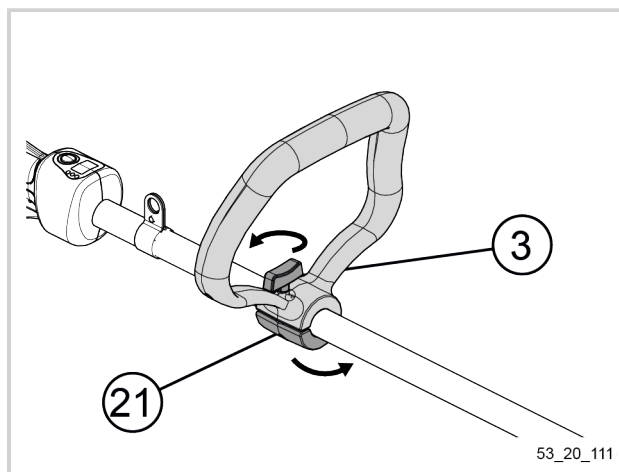


3. Close the base of the round handle (21).
4. Tighten the knob (3) of the round handle.

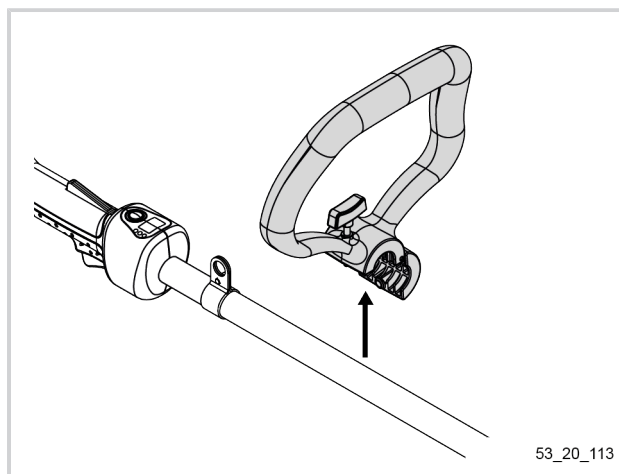


#### 4.3.2. DISMOUNTING THE ROUND HANDLE

1. Loosen the knob (3) of the round handle.
2. Open the base of the round handle (21).



3. Remove the round handle (4).



#### 4.4. CONNECTING PELLENC BATTERIES

##### Important

Always check the remaining battery-life before use. If necessary, recharge the battery using the charger.

To prolong the life of the connectors, it is advisable to protect them when they are disconnected. Avoid leaving the connectors in contact with abrasive or dirty surfaces, or subjecting them to major impacts (falls).

For more information on PELLENC batteries see the battery instructions.

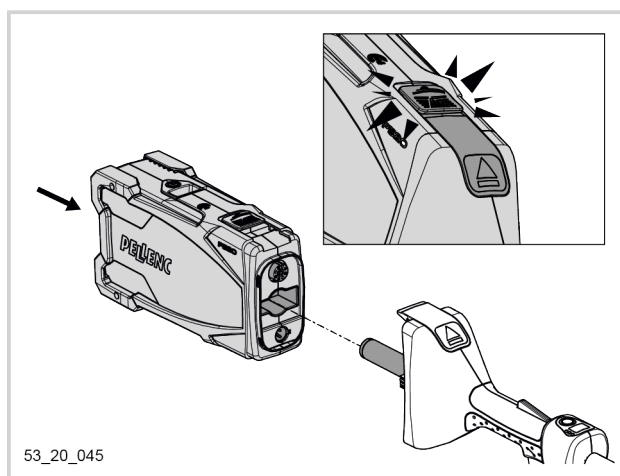
##### Note

When the battery is connected to the tool, the information appears on the tool's handle digital display and disappears from the battery's digital display.

##### 4.4.1. ALPHA 260 / 520 BATTERIES

Connecting the battery to the tool:

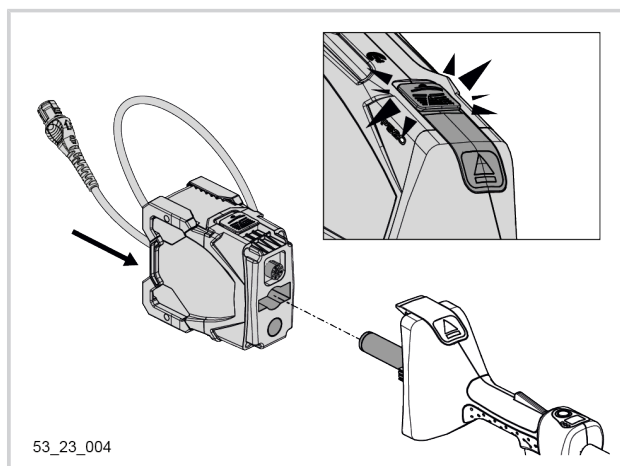
1. Position the battery with the digital display of the battery facing up.
2. Push in the battery until the locking clip engages and the safety lock is closed.



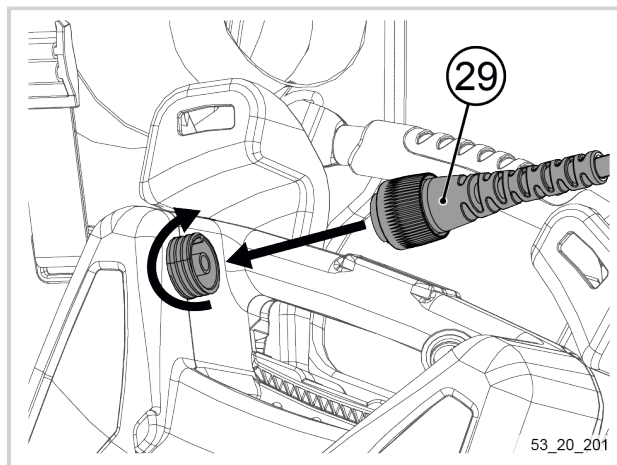
##### 4.4.2. ULIB 750 / 1200 / 1500 BATTERIES WITH COUNTERWEIGHT

Attaching the counterweight to the tool:

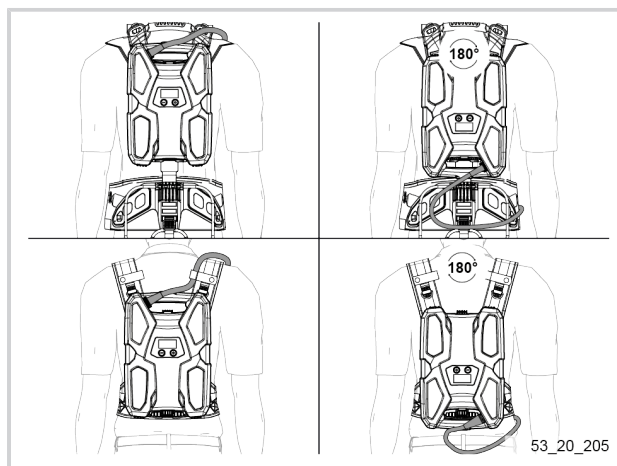
1. Push in the counterweight until the locking clip engages and the safety lock is closed.



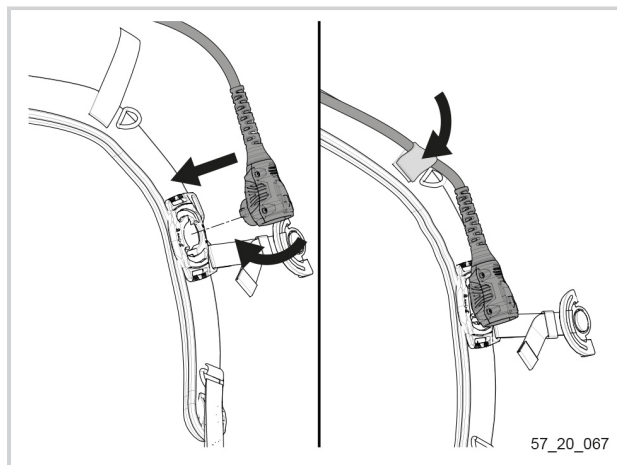
2. Place the battery in the harness (see harness instruction manual).
3. Connect the extension cord (29) to the battery.
4. Lock the connector by screwing the safety ring.



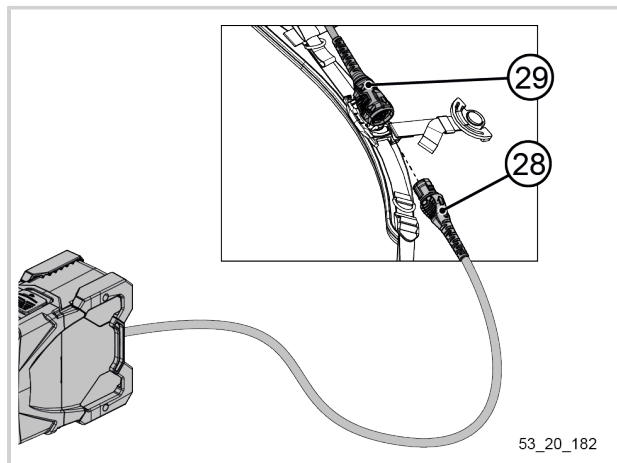
5. Put on the harness (see harness instruction manual).
6. Depending on the battery model and the position of the connector on the battery, the extension cord (29) must be passed through one of the shoulder straps or through the belt.



7. Set up the pin of the quick connector into the harness buckle.
8. Turn the quick connector a quarter turn to hold it in position.



9. Connect the power cord (28) of the counterweight to the extension cord (29).



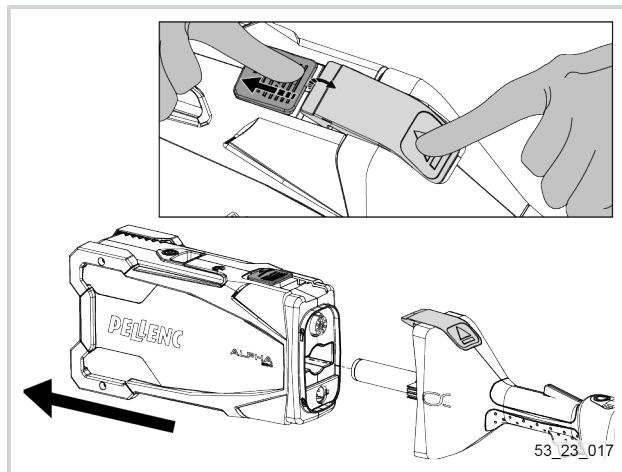


## 4.5. DISCONNECTING PELLENC BATTERIES

### 4.5.1. ALPHA 260 / 520 BATTERIES

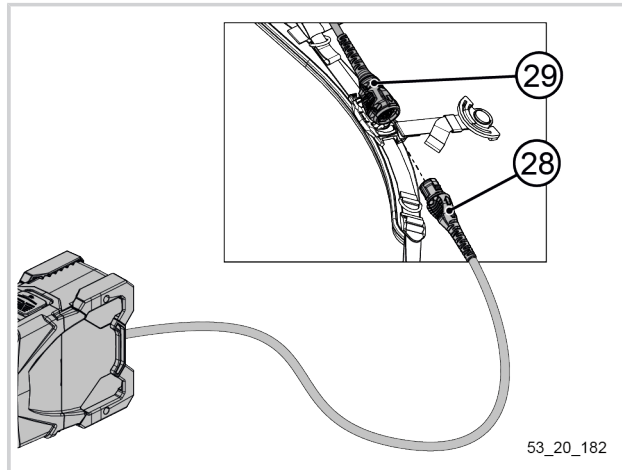
Disconnecting the battery from the tool:

1. Pull the security lock to open it.
2. Press the locking clip while keeping the safety lock open.
3. Pull out the battery.

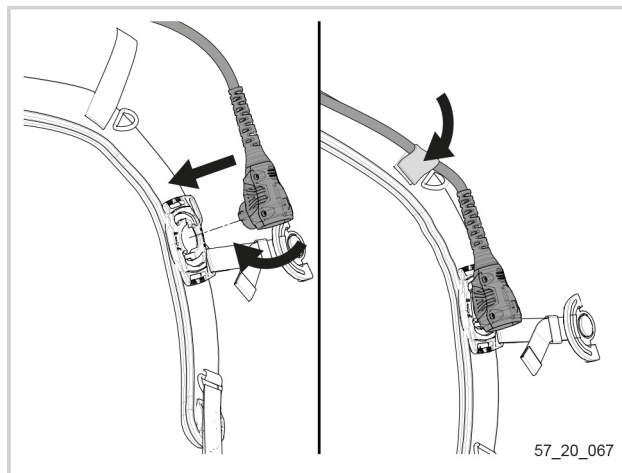


### 4.5.2. ULIB 750 / 1200 / 1500 BATTERIES WITH COUNTERWEIGHT

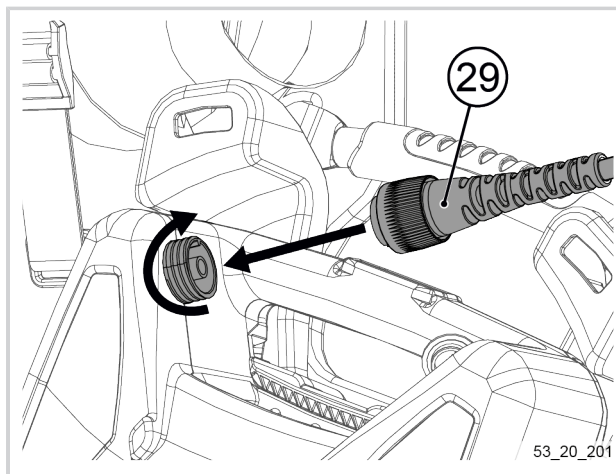
1. Disconnect the power cord (28) of the counterweight from the extension cord (29).



2. Turn the quick connector a quarter turn to remove the extension cord (29) from the shoulder strap or harness belt.

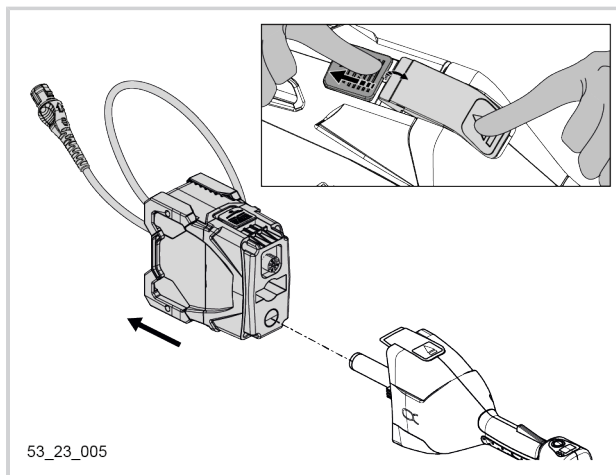


3. Remove the harness (see harness instruction manual).
4. Disconnect the extension cord (29) from the battery.
5. Remove the battery from the harness (see harness instructions).



Detach the counterweight from the tool:

6. Pull the security lock to open it.
7. Press the locking clip while keeping the safety lock open.
8. Pull out the counterweight.



## 5. USAGE

### 5.1. ADJUSTING THE WORKING POSITION

The working position must be adjusted according to the size of the operator.

It should allow easy use requiring little effort.

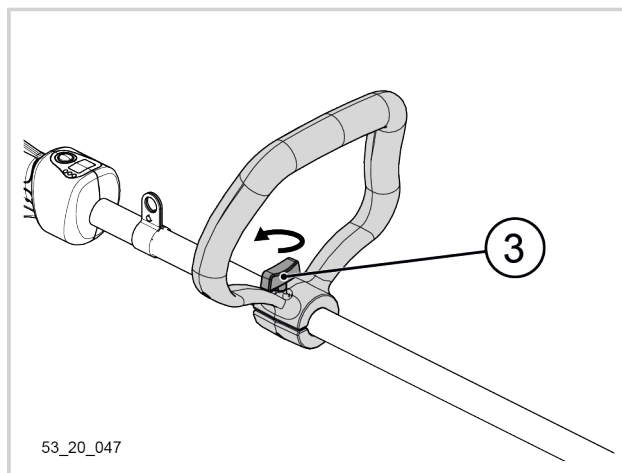
The user should not work with arms stretched or completely bent.

The cutting head should be close to the ground.

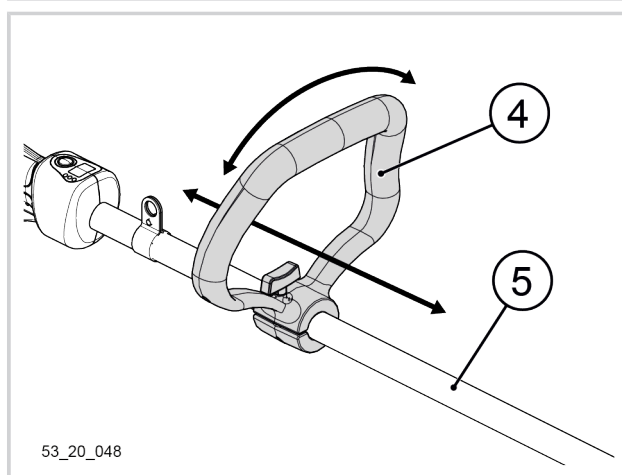


**5.1.1. ADJUSTING THE ROUND HANDLE**

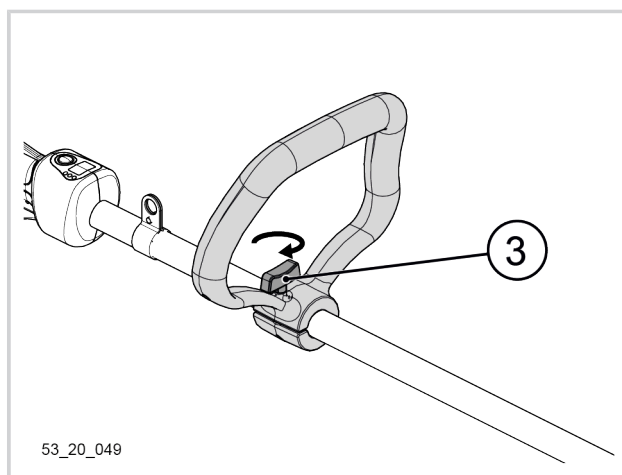
1. Loosen the knob (3) of the round handle.



2. Position the round handle (4) along the tube (5).
3. Align the control handle.

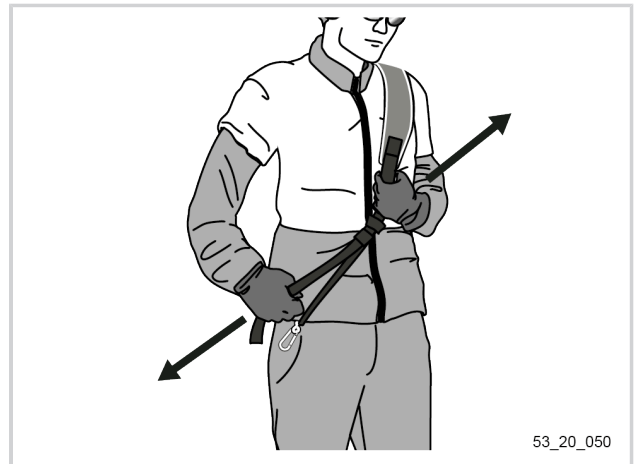


4. Tighten the knob (3) of the round handle.



### 5.1.2. ADJUSTING THE CARRYING STRAP

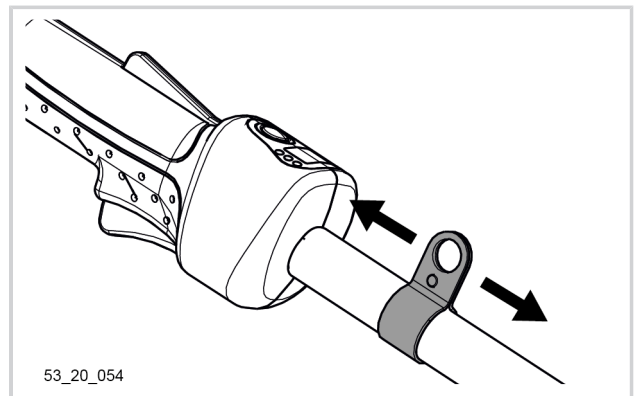
1. Put on the carrying strap.
2. Adjust the length.



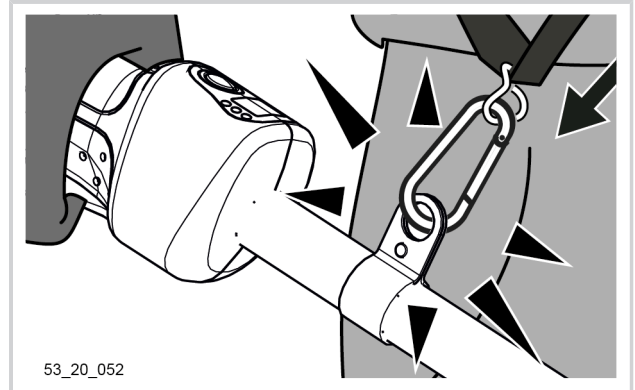
3. Pass the self-attaching fastener end of the strap under the main carrying strap.
4. Fold the self-attaching fastener over the main strap.



5. Slightly loosen the Torx screw on the carrying eyelet which is on the tool tube.
6. Position the carrying eyelet so that the tool is balanced.
7. Retighten the Torx screw.



8. Attach the carrying strap to the carrying eyelet of the tool.



## 5.2. SWITCHING ON PELLENC BATTERIES

### Note

For more information on PELLENC batteries see the battery instructions.

### 5.2.1. ALPHA 260 / 520 BATTERIES

Check that the charge level is displayed on the battery display:

#### The charge level is not displayed on the battery display:

- Press the battery On/Off button (19).  
The battery should emit a beep.  
Then the charge level is displayed on the battery display.

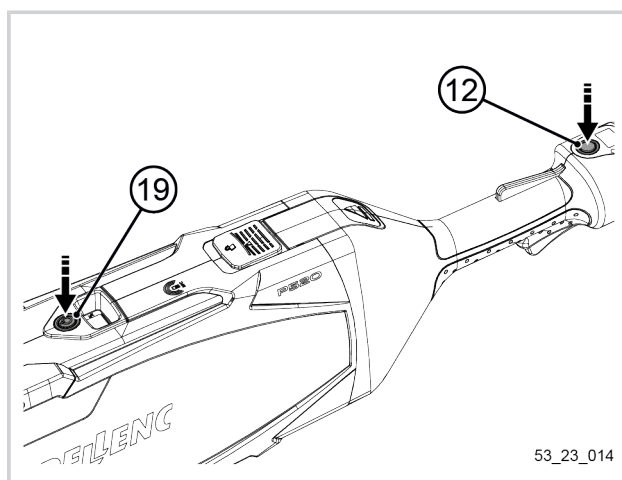
#### The charge level is displayed on the battery display:

Powering up can be done in 2 ways:

- Press the battery On/Off button (19).  
The "speed" LEDs should light up on the tool handle.  
Then the charge level is displayed on the handle display.  
The current speed LEDs light up.

Or:

- Press the On/Off button on the tool handle for 1 second (12).  
The battery should emit a beep.  
The "speed" LEDs should light up on the tool handle.  
Then the charge level is displayed on the handle display.  
The current speed LEDs light up.



53\_23\_014

### 5.2.2. 750 / 1200 / 1500 ULIB BATTERIES

Check that the charge level is displayed on the battery display:

**The charge level is not displayed on the battery display:**

- Press one of the 2 on/off buttons on the battery.

**The charge level is displayed on the battery display:**

Powering up can be done in 2 ways:

- Press one of the 2 on/off buttons on the battery.

**Or:**

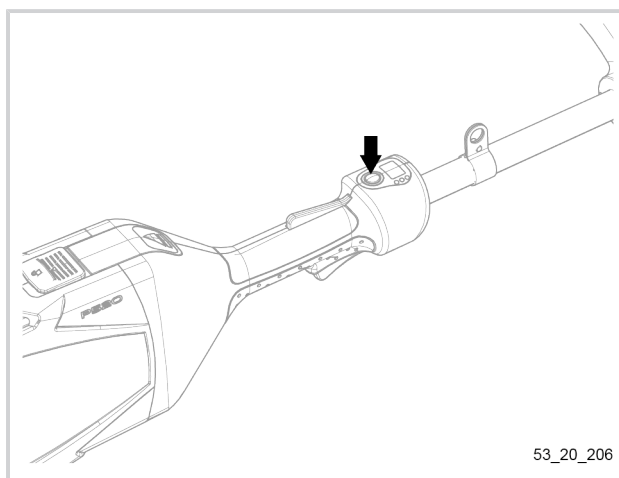
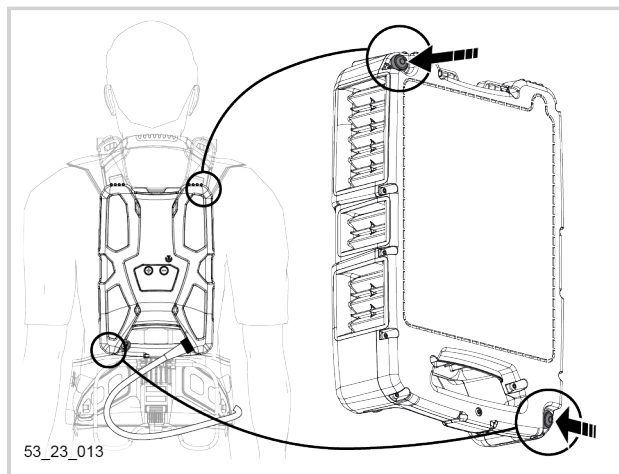
- Press the On/Off button on the tool handle for 1 second (12).

The battery should emit a beep.

The "speed" LEDs should light up on the tool handle.

Then the charge level is displayed on the handle display.

The current speed LEDs light up.



### 5.3. SWITCHING OFF PELLENC BATTERIES

#### 5.3.1. ALPHA 260 / 520 BATTERIES

Powering off can be done in 2 ways:

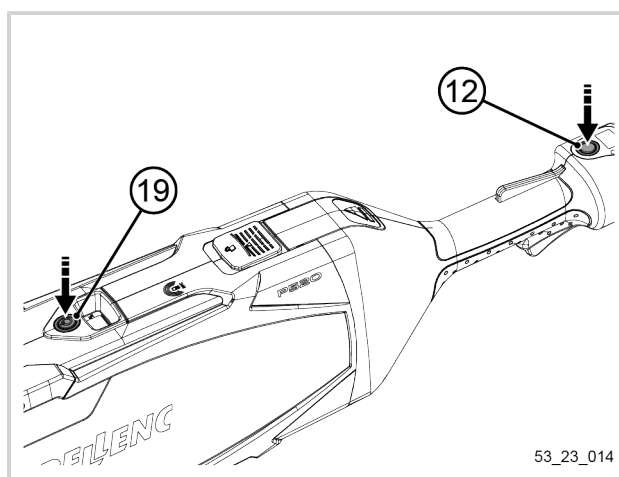
- Press and hold the On/Off button on the tool handle for 3 seconds (12).

"BY" is displayed on the tool handle display.

**Or:**

- Press the battery On/Off button (19).

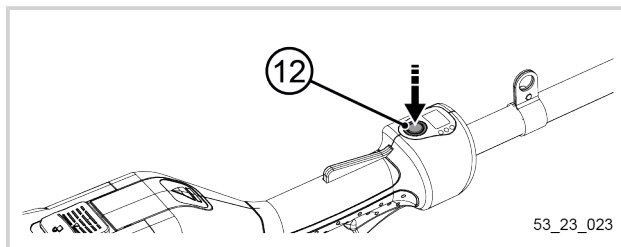
"BY" is displayed on the tool handle display.



### 5.3.2. 750 / 1200 / 1500 ULIB BATTERIES

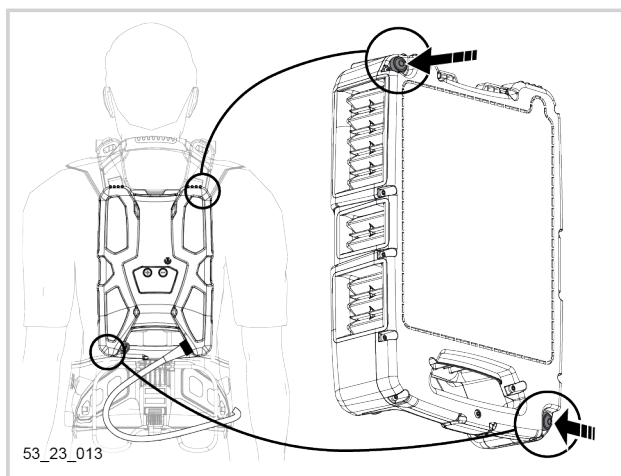
Powering off can be done in 2 ways:

- Press and hold the On/Off button on the tool handle for 3 seconds (12).  
"BY" is displayed on the tool handle display.



Or:

- Press one of the 2 on/off buttons on the battery.



## 5.4. ADJUSTING THE CUTTING SPEED

### 5.4.1. CUTTING SPEED RECOMMENDATIONS

Vegetation type	Recommended rotational speed	Maximum rotational speed in rpm
Border / Lawn	Speed 1	4000
Grass	Speed 2	5800
Dense and tall grass	Speed 3	6400

### Note

Reduce the speed to the minimum for greater autonomy or when the flashing message "°C" appears on the display (thermal safety shutdown near).

The tool remembers the last used speed and it will be selected by default the next time the tool is switched on.

### Important

Do not cut anything other than vegetation.

### 5.4.2. SPEED SELECTION

#### Low speed: speed 1

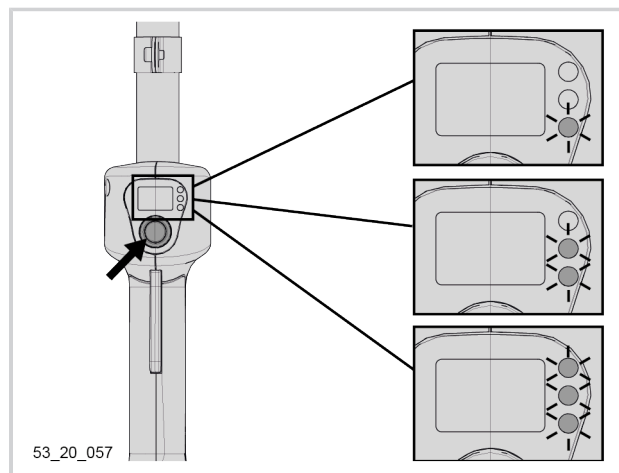
- Press once on the tool On / Off button.
- 1 LED lights up.

#### Medium speed = speed 2

- Press twice on the tool On / Off button.
- 2 LEDs light up.

#### High speed = speed 3

- Press three times on the tool On / Off button.
- 3 LEDs light up.



#### Caution

Flashing "°C" message on the handle display when the tool temperature approaches the safety shutdown temperature. Reduce the speed to a minimum or take a break.

### 5.5. DÉMARRAGE



#### Caution

Check that the safety devices are running properly before starting work.

#### Before starting work, check that:

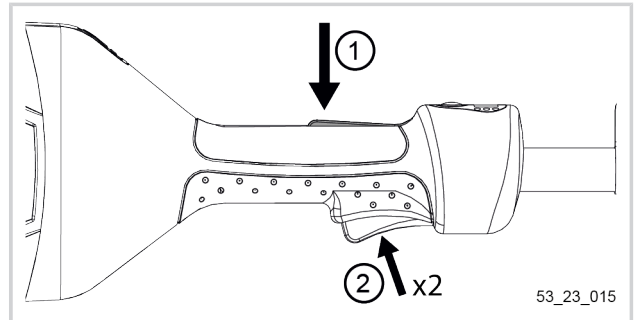
- The protective casing is present on the grass cutter,
- The grass cutter is equipped with a cutting head and wire,
- The grass trimmer is securely attached to the harness.
- The tool is properly balanced on the harness.
- The harness is correctly adjusted in height.
- The cutting head is not in direct contact with the ground.
- The work area is clear,
- Nobody else is within 15 metres.
- The battery is properly connected,
- The battery charge level is displayed.
- The selected speed is correct.

#### Note

When the battery is connected to the tool, the information appears on the tool's handle digital display and disappears from the battery's digital display.



1. Press the safety throttle.  
Keep the safety throttle pressed.
2. Press the control trigger twice to prime.



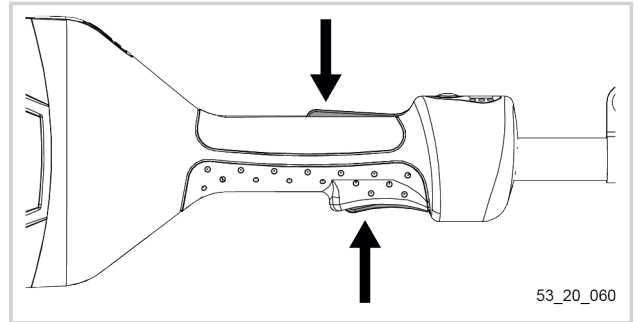
53\_23\_015

3. Keep the 2 triggers pressed for the tool to work.

The pressure exerted on the trigger allows the rotational speed of the cutting head to be gradually increased up to the maximum value selected.

### Note

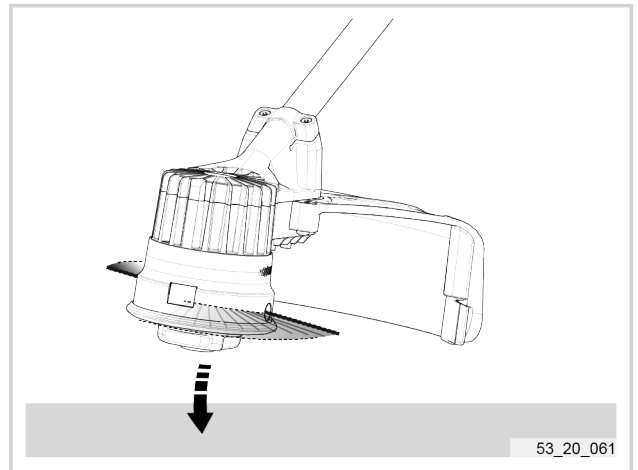
Repeat priming if you have released the control handle for more than 3 seconds.



53\_20\_060

## 5.6. ADJUSTING THE LENGTH OF THE STRIMMER WIRE

1. Start the tool.
2. Select speed 3 by pressing the on/off button on the tool 3 times (all 3 LEDs should light up).
3. Tap the cutting head on the ground.



53\_20\_061

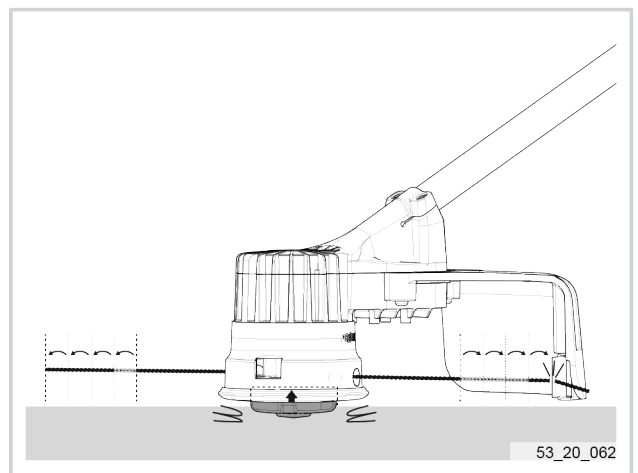
The cutting head plate in the protective guard automatically cuts the strimmer wire to the correct length.



### Warning

The strimmer wire cutting plate does not cut the wire in speed 1.

Select speed 2 or 3.



53\_20\_062

## 5.7. TIPS FOR USE AND STRIMMING TECHNIQUES

1. Before starting mowing/trimming, examine the surface to be cleared: nature of the surface, area, relief, presence of obstacles, etc.

- Note the wind direction. The latter may facilitate the removal of clippings and make the task of the user easier.

## Important

Always keep a minimum distance of 50 mm between the cutting head and the obstacle in order to avoid any risk of damage to the tool and the "strands" (of trimmer wire).

### 5.7.1. BASIC MOWING/STRIMMING

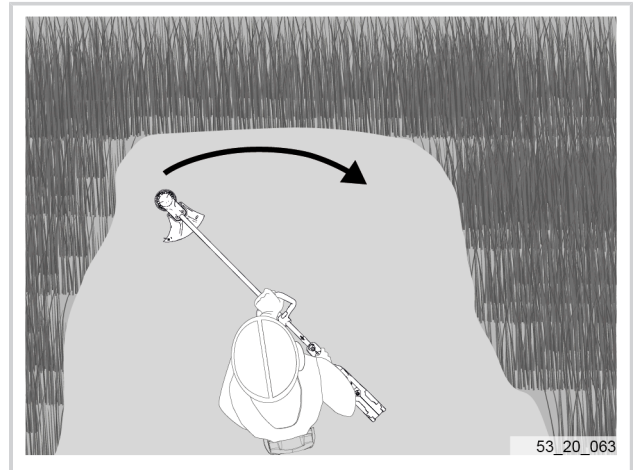
Define a strip that covers the width of the work area.

#### Movement to be performed

- Move the tool in semi-circles from left to right while gradually advancing.
- Keep the cutting head parallel to the ground.
- Do not put the cutting head in contact with the ground.

#### Direction of progression

- The operator should always walk forward.



### 5.7.2. STRIMMING ON SLOPES

## Important

Before starting to mow on a slope, make sure you are stable on the ground.

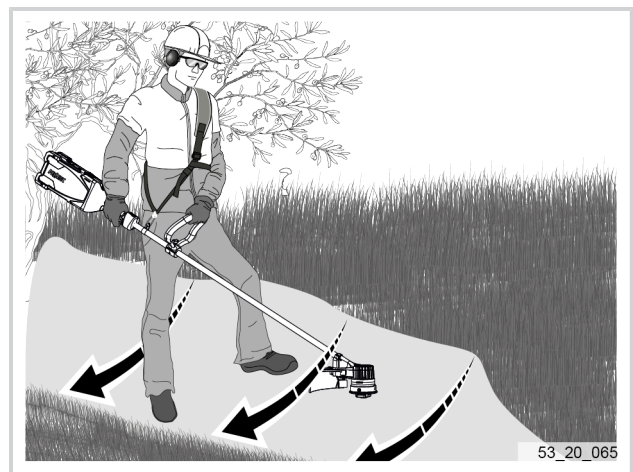
- Position yourself at the base of the slope.
- Define a strip parallel to the slope that spans the width of the work area.

#### Movement to be performed

- Move the tool from the higher side of the slope to the lower side.
- The cut grass will fall towards the downside.
- This will prevent the cutting head from rotating in grass that has already been cut.
- Do not put the cutting head in contact with the ground.

#### Direction of progression

- The operator must always walk forward, following the strip defined at the start of the work.
- When said strip is finished, the user must retrace his steps and start a new strip slightly higher than the one which has just been completed.



**5.7.3. STRIMMING ALONG WALLS, FENCES, AROUND TREES AND FLOWER BEDS**

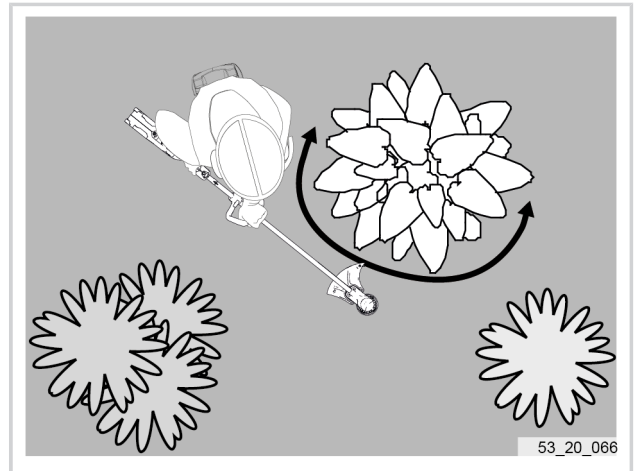
- Protect bark and the edge of flower beds by using the safety guard as a shield between the surface area to be cleared and the vegetation to be protected.

**Movement to be performed**

- Move the tool in semi-circles from left to right.
- Keep the cutting head parallel to the ground.
- Do not put the cutting head in contact with the ground.

**Direction of progression**

- The operator should always walk forward.



## 6. MAINTENANCE

### 6.1. MAINTENANCE ADVICE



#### Caution

Always disconnect the tool battery before starting tool maintenance.

- Use products recommended by PELLENC.
- In the event of any problem, consult an authorised PELLENC distributor.

### 6.2. MAINTENANCE TABLE

Maintenance task	Daily	Each time the tool is used	Every two hours	After each use	Every year or as necessary
Cleaning the tool, see 6.4. Cleaning, page 32				X	
Visual check of the machine's safety devices (carrying plate, safety casing, etc.)		X		X	
Functional check of the safety throttle trigger		X			
Tightening of the cutting head at the shaft attachment (check for deformation or wear).		X	X		X
Visual inspection of the cutting tool at the shaft attachment (check for deformation or wear).		X	X		X
Check the battery level.		X			
Machine check by an approved PELLENC dealer.					X
Battery	Please refer to the battery operating instructions				

### 6.3. MOUNTING/REMOVAL

#### 6.3.1. REMOVING AND MOUNTING THE ALPHA CUT CUTTING HEAD

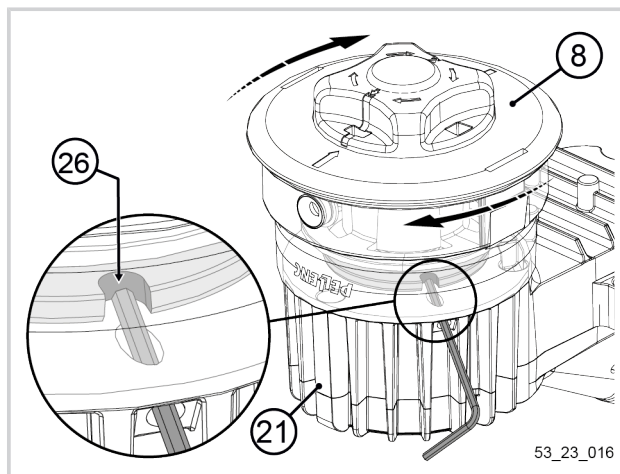


#### Caution

Always disconnect the battery before performing maintenance on the cutting head.

### 6.3.1.1. REMOVING THE ALPHA CUT CUTTING HEAD

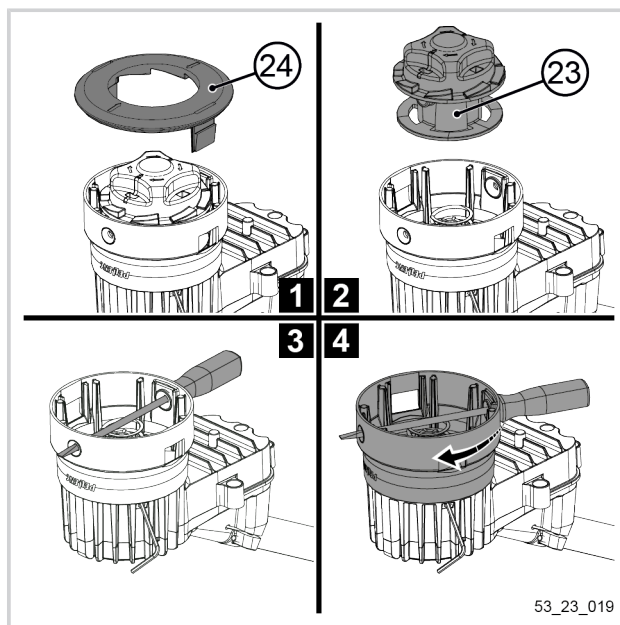
1. Remove the protective casing (see 4.2.2. Remove the protective guard, page 13).
2. Position the supplied Torx 25 spanner or a Torx 25 screwdriver in the slot between the cutting head (8) and the motor (21).
3. Turn the cutting head until you find the notch (26) to stop the rotation of the cutting head support (8).
4. Insert the Torx 25 spanner supplied or the head of a Torx 25 screwdriver into the notch (26) of the cutting head support.
5. Unscrew the cutting head clockwise on the motor shaft.
6. Remove the tool.



#### Note

If the cutting head is too tight:

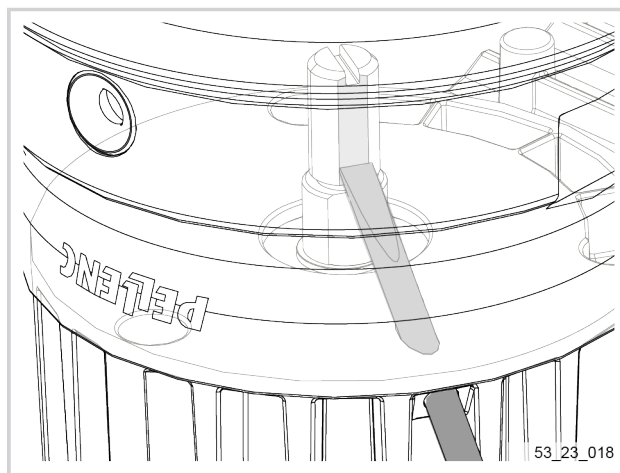
1. Remove the cutting head cover (24).
2. Remove the reel (23).
3. Insert a tool through the eyelets of the cutting head.
4. Use the tool to provide leverage to unscrew the cutting head.



#### Note

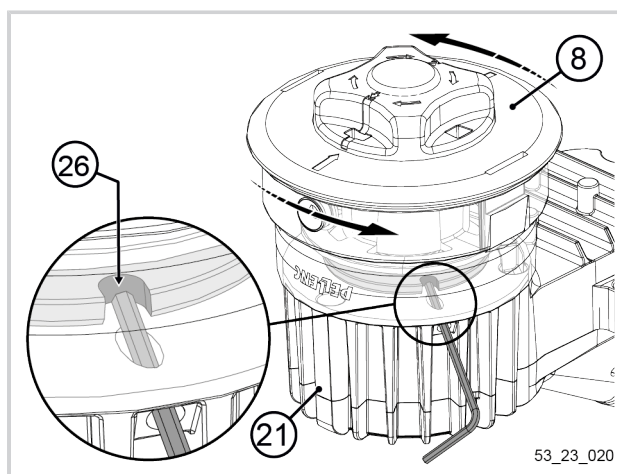
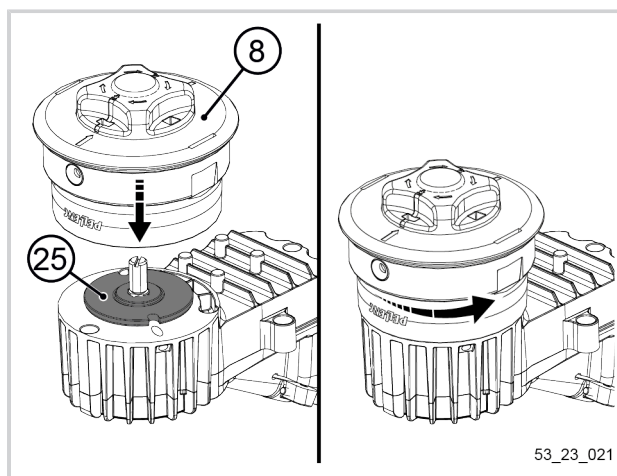
If the cutting head support was forgotten during the last maintenance session:

1. Insert the head of a flathead screwdriver into the notch (26) of the cutting head support.
2. Press the flat part of the screwdriver against the rotor shaft to stop it rotating.
3. Unscrew the cutting head clockwise on the motor shaft.



### 6.3.1.2. MOUNTING THE ALPHA CUT CUTTING HEAD

1. Check that the cutting head support (25) is on the motor.
2. Position the cutting head (8) on the motor shaft.
3. Screw the cutting head counter-clockwise onto the motor shaft.
4. Position the supplied Torx 25 spanner or a Torx 20 screwdriver in the slot between the cutting head (8) and the motor (21).
5. Turn the cutting head until you find the notch to block the rotation of the cutting head support (8).
6. Insert the Torx 25 spanner supplied or the head of a Torx 25 screwdriver into the notch (26) of the cutting head support.
7. Tighten by screwing the cutting head counterclockwise onto the motor shaft.
8. Remove the tool.
9. Remount the protective casing (see 4.2.1. Fitting the protective guard, page 12).



### 6.3.2. FITTING THE STRIMMER WIRE

#### Recommended strimmer wire diameters

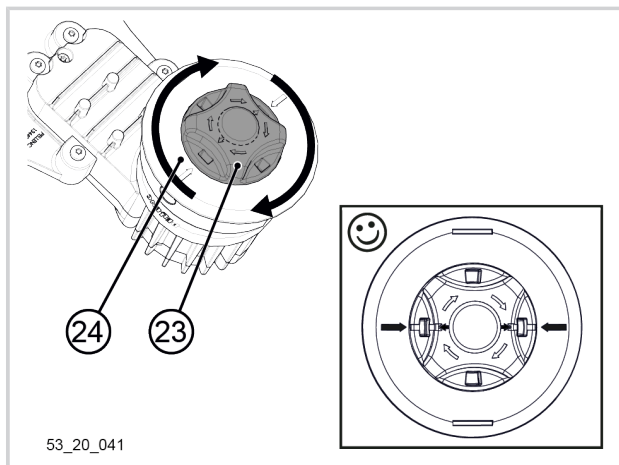
Vegetation type	Ø PELLENC strimmer wire
Border / Lawn / Grass	2.4 mm
Dense and tall grass	3 mm



#### Caution

Always disconnect the battery before performing maintenance on the cutting head.

1. Position the arrows on the wire spool (23) opposite the arrow on the TAPCUT 2 cover (24).



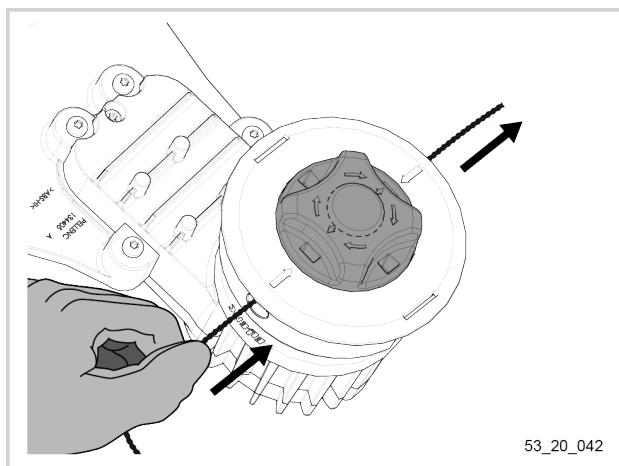
2. Preparing the strimmer wire.

### Important

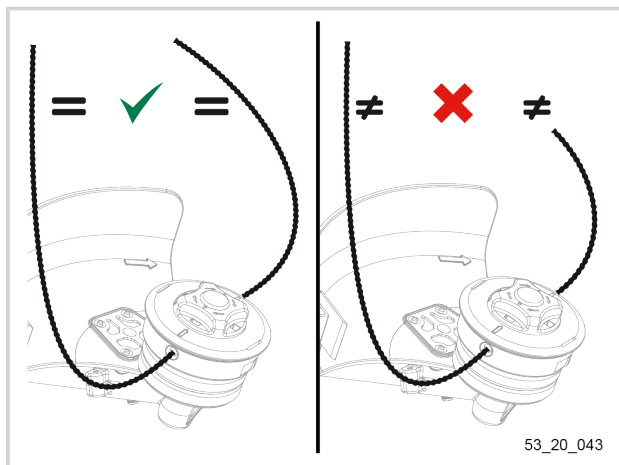
The maximum length of the strimmer wire should be:

- 3.5m for Ø 2.4 mm.
- 2.5 m for Ø 2.7 mm.

The minimum length is one turn on the wire spool.



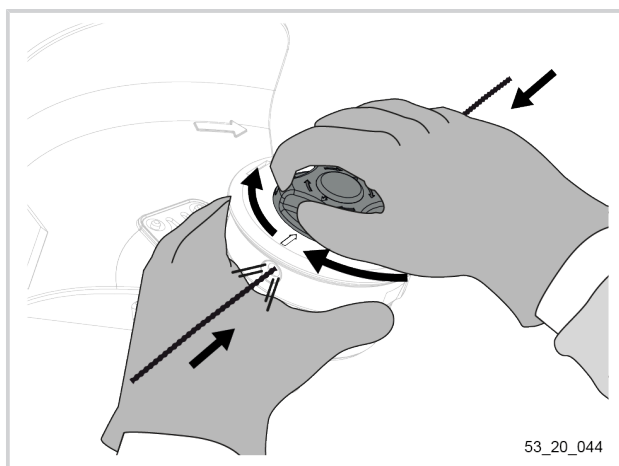
3. Pass the strimmer wire through the eyelets of the cutting head.
4. Share the strimmer wire evenly on both sides of the spool (23).



5. Turn the spool (23) clockwise to wind the strimmer wire.

### Important

Make at least one turn to secure the strimmer wire.





**6.4. CLEANING****Warning**

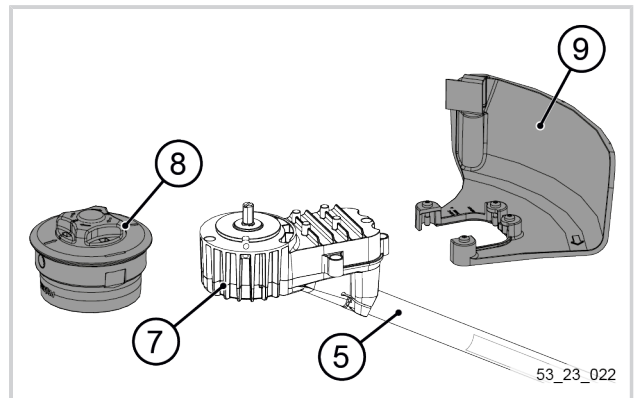
Do not use a high pressure cleaner.

Only clean by blowing or brushing.

**Important**

Always remove and clean the cutting head after using the grass cutter.

1. If necessary remove the protective casing (9), (see 4.2.2. Remove the protective guard, page 13).
2. Remove the cutting head (8), (see 6.3.1.1. Removing the ALPHA CUT cutting head, page 29).
3. Clean the protective casing (9) with water.
4. Clean the cutting head (8) with water.
5. Clean the outside of the motor casing (7) and the tube (5).

**Important**

After cleaning, allow the tool to dry thoroughly before using it.



## 7. INCIDENTS AND TROUBLESHOOTING

### 7.1. TABLE OF INCIDENTS AND BREAKDOWNS - TROUBLESHOOTING

Incident / breakdown	LED status		Probable cause	Checks	Solutions	Repairer
	on/off button	of the tool handle				
The tool does not start	0	Off	Battery is off	Battery switch	Press the button on the battery	User
	I	Off	Battery	Check that the bat- tery is not com- pletely discharged	Charge the battery	User
			Circuit board	At an autho- rised PEL- LENC distributor	Change the circuit board	Authorised PELLENC distributor
		On	Trigger no longer functions	At an autho- rised PEL- LENC distributor	Change the trigger or sensor	Authorised PELLENC distributor
			Circuit board	At an autho- rised PEL- LENC distributor	Change the circuit board	Authorised PELLENC distributor
The cutting head makes an abnormal noise or vi- brates a lot	I	On	Damaged cutting head	Check there is no deformation	Change the cutting head	User Authorised PELLENC distributor
			Motor shaft damaged	Check the condi- tion of the shaft (no distortion)	Change the motor shaft	Authorised PELLENC distributor
			Strimmer wire not cut to length	Check that you are in speed 3	See 5.6. Ad- justing the length of the trimmer wire, page 25	User
				Check that the wire cutting plate is fitted	Refit the trimmer wire cutter plate	User
			Strimmer wire too long	Check that the protective cas- ing is fitted	Fit the protec- tive casing see 4.2.1. Fit- ting the pro- tective guard, page 12	User
			Strimmer wire badly wound in the cutting head	Check the wind- ing of the strim- mer wire in the cutting head.	See 6.3.2. Fitting the trimmer wire, page 30	User

Incident / breakdown	LED status		Probable cause	Checks	Solutions	Repairer
	on/off button	of the tool handle				
The tool stops during use	I	Off	Trigger no longer functions	At an autho- rised PEL- LENC distributor	Change the trigger or sensor	Authorised PELLENC distributor
			The power cord of the backpack battery is cut	Check the condi- tion of the cord	Change the cord	Authorised PELLENC distributor
			The tool has reached its tem- perature limit	See 7.3. Ther- mal safety shut- down, page 35	See 7.3. Thermal safe- ty shutdown, page 35	User  Authorised PELLENC distributor
			The battery is flat	When stopped, check the battery charge level shown in the side window	Recharge the battery (if less than 10% charged)	User
			Unintentional pressing of the tool's on/off but- ton for more than 4 seconds.	The battery LED and digital dis- plays are off.	Switch the tool on again.	User
The tool drops in pow- er and "°C" appears on the screen.	I	On	The tool has reached thermal safety shutoff	See 7.3. Ther- mal safety shut- down, page 35	See 7.3. Thermal safe- ty shutdown, page 35	User
						Authorised PELLENC distributor


## 7.2. SUMMARY OF DISPLAY SCREEN MESSAGES

### Note

Error messages appear on the digital display on the tool handle.

Diagnostics display codes	Name
E1E1	Abnormal current
E2	Battery communication fault
E4	Tool temperature too high
E5	HMI board communication error
E9	Sensor fault

### Important

 Never attempt to dismantle the tool, under penalty of cancellation of the warranty. Contact your authorised repair person.

### 7.3. THERMAL SAFETY SHUTDOWN

#### Note

To protect the tool from dangerous operating temperatures during intensive and/or prolonged use, dynamic power limiting can be activated.

#### When the tool temperature rises too high, check that:

1. The motor protective casing is clean.
2. The length and diameter of the trimmer wire are suitable.
3. The vegetation is adapted to the tool (check the type of vegetation, the height of the vegetation, etc.).

#### When the tool temperature reaches the monitoring threshold:

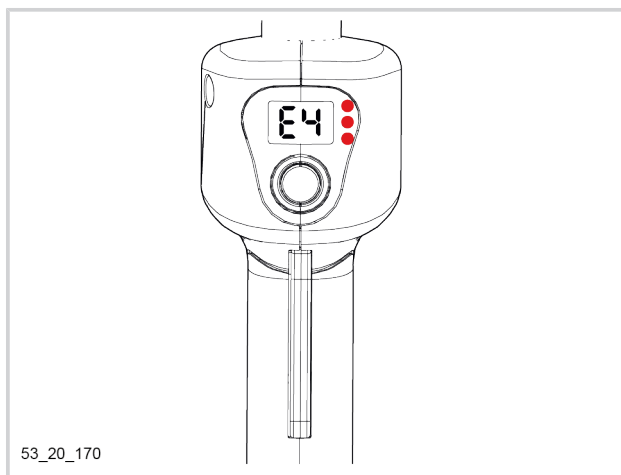
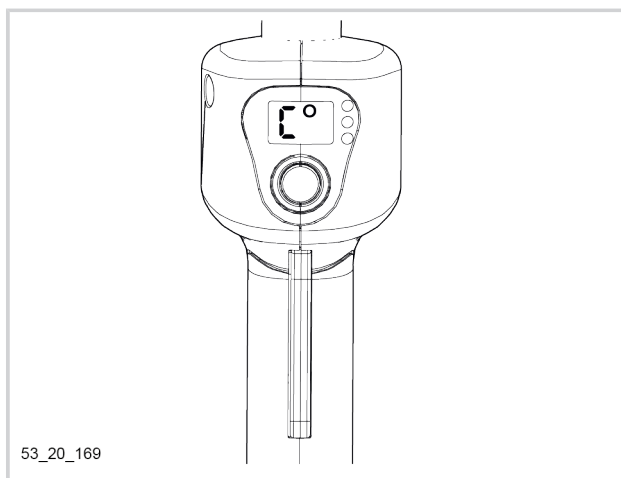
- "C°" flashes alternately with the battery life on the digital display of the handle.
- The maximum power available is dynamically adjusted so that you can always work at while limiting the temperature.

#### When the temperature of the tool drops below the monitoring threshold:

- As soon as the temperature drops below the monitoring threshold, the full power of the tool is available again.

#### When the tool temperature reaches the safety threshold:

1. The error message "E4" appears on the handle display of the tool.
2. The battery emits 1 long beep.
3. The battery emits 4 short beeps.
4. The battery and the tool switch off.



#### Important

If the problem persists, contact an authorised Pellenc dealer.

## 8. STORAGE AND TRANSPORT

### 8.1. STORAGE

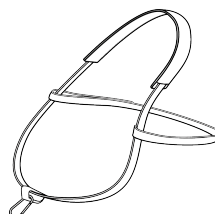
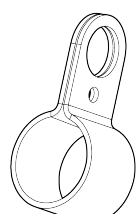
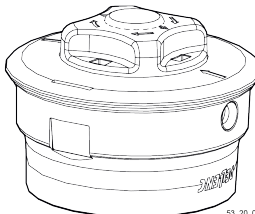
- Switch off the tool (see 5.3. Switching off PELLENC batteries, page 22).
- Disconnect the battery (see 4.5. Disconnecting PELLENC batteries, page 17).
- Store the battery (refer to the battery operating instructions).
- Clean the tool (see 6.4. Cleaning, page 32).
- To store the tool in its packaging, perform the disassembly steps in 4. Start-up, page 12.
- Store the tool in a dry place out of children's reach.

### 8.2. TRANSPORT

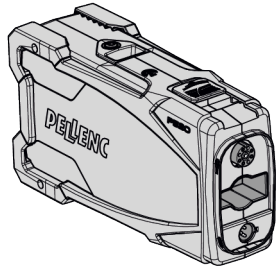
- Switch off the tool (see 5.3. Switching off PELLENC batteries, page 22).
- Disconnect the battery (see 4.5. Disconnecting PELLENC batteries, page 17).
- Ensure that the tool and the battery are secured in the transport vehicle.

## 9. ACCESSORIES AND CONSUMABLES

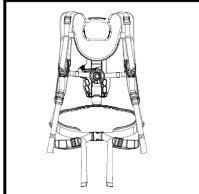
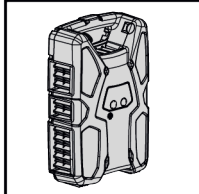
### 9.1. ACCESSORIES INCLUDED

Name	Reference	
Carrying strap	133937	 <small>53_20_068</small>
Carrying eyelet + bolt	134822	 <small>53_23_012</small>
Cutting head: ALPHA CUT	57188	 <small>53_20_075</small>

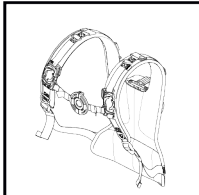
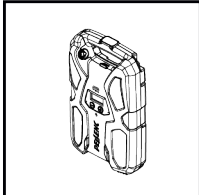
## 9.2. OPTIONAL ACCESSORIES

Name	Reference	
PELENC ALPHA 260 battery	57192	
PELENC ALPHA 520 battery	57193	

53\_20\_071

Name	Reference	
Comfort harness	57183	 
1200 Ultra Lithium battery	57253	
1500 Ultra Lithium battery	57254	
Counterweight	57195	
Extension cord	57238	

53\_20\_072

Name	Reference	
750 ULiB battery harness	57257	 
750 Ultra Lithium battery	57191	
Counterweight	57195	
Extension cord	57238	

53\_20\_076

### 9.3. CONSUMABLES

#### 9.3.1. TAP CUT WIRES

Name		Diameter	Length +/- 1%	Reference
Reel of blue wire	 53_23_007	Ø 2.7 mm	280m	159892
Reel of blue wire	 53_23_006	Ø 2.4 mm	347m	159893
Nylon wire shell	 53_23_009	Ø 2.4 mm	70m	159894
Nylon wire shell	 53_23_008	Ø 2.7 mm	63m	159895

## 10. WARRANTIES

### 10.1. GENERAL WARRANTIES

#### 10.1.1. STATUTORY WARRANTY

##### 10.1.1.1. LATENT DEFECTS WARRANTY

Apart from the commercial warranty provided for under Article II, Article 1641 of the Civil Code provides that «the seller is bound to a warranty on account of latent defects of the object sold which render it unfit for the use for which it was intended, or which would impair said use to the extent that the buyer would not have acquired it, or would only have given a lesser price for it, had he known of them».

Article 1648 of the Civil Code "The action resulting from latent defects must be brought by the purchaser within two years after the discovery of the defect. "

**10.1.1.2. LEGAL WARRANTY OF CONFORMITY**

Article L.217-4 of the Consumer Code "The seller delivers goods in conformity with the contract and is liable for defects of conformity existing upon delivery.

The seller is also liable for any lack of compliance resulting from the packaging, assembly or installation instructions whenever its contractual liability is engaged in this regard or the latter are carried out under its responsibility

Article L.217-5 of the French Consumer Code "Goods are compliant with the contract":

1. Where they are fit for the purpose normally expected of similar goods and, where applicable:
  - If it matches the description given by the seller and possesses the qualities that were presented to the purchaser in the form of a sample or model;
  - If it possesses the qualities that a purchaser can reasonably expect given the public statements made by the seller, the producer or its representative, especially in advertising or labelling;
2. Or if it has the characteristics defined by mutual agreement between the parties or be suitable for any special use sought by the buyer, brought to the attention of the seller and accepted by the latter.

Article L.217-12 of the Consumer Code «legal action resulting from lack of conformity lapses two years after delivery of the goods».

**10.1.2. COMMERCIAL WARRANTY PELLENC****10.1.2.1. CONTENTS****10.1.2.1.1. GENERAL INFORMATION**

In addition to legal warranties, client users benefit from the commercial warranty on products PELLENC covering the exchange and replacement of parts recognised as being out of order, due to machining defects, assembly defects or material defects, whatever the cause.

The warranty is fully integral to the product sold by PELLENC.

**10.1.2.1.2. REPLACEMENT PARTS**

The commercial warranty also covers original PELLENC spare parts, excluding labour and to the exclusion of certain parts of each product provided at delivery.

**10.1.2.2. DURATION OF THE WARRANTY****10.1.2.2.1. GENERAL INFORMATION**

PELLENC Products are guaranteed under the commercial warranty as from delivery to the customer for a period of two (2) years for products connected to a PELLENC battery, and for a period of one (1) year for other PELLENC products.

**10.1.2.2.2. REPLACEMENT PARTS**

PELLENC replacement parts replaced under the product warranty are guaranteed under the commercial warranty as from delivery of the PELLENC product to the customer user for a period of two (2) years for products connected to a PELLENC battery, and for a period of one (1) year for other PELLENC products.

In the case of products connected to a PELLENC battery, parts that are replaced under the product warranty after the 12th month of use, are covered for a period of one (1) year.

#### **10.1.2.2.3. WARRANTY EXCLUSIONS**

Excluded from the commercial warranty are products that have been subject to abnormal use, or were used under conditions and for purposes other than those for which they were manufactured, especially in the case of non-compliance with conditions stipulated in this operating instructions manual.

It does not apply in case of shock, fall, neglect, lack of supervision or maintenance or in case of transformation of the product. Also excluded from the warranty are products that have been subject to tampering, alteration or modification by the customer user.

Wear parts and/or consumables are not covered by the warranty.

#### **10.1.2.3. IMPLEMENTATION OF THE COMMERCIAL WARRANTY**

##### **10.1.2.3.1. PRODUCT COMMISSIONING AND COMMISSIONING DECLARATION**

No later than eight days after the delivery of the goods to the customer user, the DISTRIBUTOR shall complete the computerized declaration of commissioning form in order to activate the latter on the website [www.pellenc.com](http://www.pellenc.com), under the heading "extranet", menu "Pellenc Extranet Service", using the identifier previously issued by PELLENC.

Failing that, commissioning declaration will not be effective and implementation of the commercial warranty PELLENC will not occur. As a consequence thereof, the DISTRIBUTOR must ensure the financial burden of its intervention under the warranty without being able to pass on the cost to the client user.

The DISTRIBUTOR shall also undertake to complete the warranty card or the certificate of warranty and commissioning for self-propelled equipment provided with the product after having the client user sign and date it.

#### **10.1.3. PAID AFTER-SALES SERVICE**

##### **10.1.3.1. GENERAL INFORMATION**

Malfunctions, breakdowns, breakages resulting from misuse, neglect or improper maintenance by the client user as well as malfunctions resulting from normal wear of the product are subject to the payment of after-sales service, even during the period of the legal and commercial warranty. After-sales service repairs that fall outside of the legal and commercial warranty also include maintenance, adjustments, diagnostics of all types, and cleaning without the present list being exhaustive.

##### **10.1.3.2. WEAR PARTS AND CONSUMABLES**

Wear parts and consumables also fall within the after-sales service.

##### **10.1.3.3. REPLACEMENT PARTS**

Paid after-sales service also covers original PELLENC spare parts, excluding labour and outside the legal and commercial warranty period.

In case of replacement of original PELLENC spare parts in the context of after-sales service, said latter are covered by a warranty of one year as from the installation date.



## 11. COMPLIANCE STATEMENTS

### 11.1. "EC" DECLARATION OF CONFORMITY: EXCELION ALPHA

MANUFACTURER / PERSON AUTHORIZED TO COMPILE THE TECHNICAL FILE	PELLENC
ADDRESS	Quartier Notre-Dame - 84120 Pertuis (France)

We hereby declare that the machine designated below:

GENERIC NAME	GRASS CUTTER
FUNCTION	BATTERY-POWERED GRASS STRIMMER FOR GREEN SPACES MAINTENANCE
COMMERCIAL NAME	EXCELION ALPHA
TYPE	EXCELION ALPHA
MODEL	EXCELION ALPHA
SERIAL NO.	53X00001 - 53X49999   53Y00001 - 53Y49999   53Z00001 - 53Z49999

Meets all relevant provisions of Machinery Directive 2006/42/EC.

Complies with the provisions of the following European Directives:

- 2014/30/EU EMC Directive; 2011/65/EU ROHS Directive; 1907/2006 REACH Regulation; 2012/19/EU WEEE Directive

The following harmonised European standards have been used in part or in full:

- EN 60335-1:2012 + A11:2014+A13:2017+A1:2019+A14:2019+A2:2019; EN 50636-2-91:2014; EN ISO 11806-1:2011; EN 60529:1991 + A2: 2013 + AC: 2019; EN 55014-1: 2017; EN 55014-2: 2015

#### Sound power level:

- Measured sound power level  $L_{WAm}$ : 92 dB (A)
- Guaranteed sound power level  $L_{WA9}$ : 94 dB (A)

The measured sound level and the guaranteed sound power level were measured by the notified body LNE, 29 avenue Roger Hennequin 78190 Trappes, France, according to a procedure in accordance with Directive 2000/14/EC Annex VI. The reported result is identified by the following number: 2000-14/P181012/1.

DONE IN PERTUIS, 19/08/2021

JEAN-MARC GIALIS

CEO







# ***PELENC***

   [www.pellenc.com](http://www.pellenc.com)

PELENC  
Quartier Notre Dame - 84120 Pertuis (France)

