

ENG

Translation of the
original user guide



OLIVE HARVESTING SHAKER RAKE "OLIVION P230 / T220-300"

OPERATING INSTRUCTIONS

48_80300-M
03/2020

READ THE OPERATING INSTRUCTIONS
MANUAL CAREFULLY BEFORE USE



www.pellenc.com

PELLENC

TABLE OF CONTENTS

1. INTRODUCTION	5
2. SAFETY	6
2.1. GENERAL SAFETY WARNINGS FOR THE TOOL	6
2.1.1. WORK AREA SAFETY	6
2.1.2. ELECTRICAL SAFETY	6
2.1.3. PERSONAL SAFETY	6
2.1.4. USE AND CARE OF THE POWER TOOL	7
2.1.5. USE OF BATTERY OPERATED TOOLS AND PRECAUTIONS FOR USE	7
2.1.6. UPKEEP	7
2.1.7. TOOL'S END OF LIFE MANAGEMENT	7
2.2. SECURITY WARNING FOR THE OLIVION OLIVE HARVESTING SHAKER RAKE	8
2.3. SAFETY MEASURES ASSOCIATED WITH CHARGERS AND BATTERY USE	8
2.4. PERSONAL PROTECTION EQUIPMENT	8
2.5. STICKERS	8
3. DESCRIPTION AND TECHNICAL CHARACTERISTICS	10
3.1. DESCRIPTION OF THE TOOL	10
3.2. DESCRIPTION OF THE BATTERY (OPTION)	10
3.3. DESCRIPTION OF THE CONVECTOR (OPTION)	11
3.4. TECHNICAL CHARACTERISTICS	11
4. COMMISSIONING	12
4.1. ASSEMBLING THE TOOL	12
4.2. ADJUSTMENT OF THE TELESCOPIC POLE	14
4.3. OLIVION LOCKING KIT ASSEMBLY	15
4.4. ADJUSTING THE ORIENTATION OF THE SHAKER RAKE	16
5. USE	17
5.1. TOOL CONNECTION	17
5.2. START-UP IN "CONTINUOUS" MODE	18
5.3. OPERATING TIPS	19
6. MAINTENANCE	20
6.1. FREQUENCY	20
6.2. CLEANING	20
6.3. REPLACING THE PRONGS	21
7. INCIDENTS AND TROUBLESHOOTING	25
7.1. FREQUENCY	25
8. STORAGE AND TRANSPORT	25

8.1. STORING THE TOOL	25
8.2. STORING THE BATTERY	25
8.3. TRANSPORT	26

9. ACCESSORIES AND CONSUMABLES 26

9.1. ACCESSORIES	26
------------------------	----

10. WARRANTIES 26

10.1. GENERAL WARRANTIES	26
10.1.1. STATUTORY WARRANTY	26
10.1.2. COMMERCIAL WARRANTYPELLENC	27
10.1.3. PAID AFTER-SALES SERVICE	28

11. COMPLIANCE STATEMENTS 29

11.1. "EC" DECLARATION OF CONFORMITY: OLIVION	29
---	----

1. INTRODUCTION

Dear Customer,

Thank you for purchasing your Olive harvesting shaker rake "Olivion P230 / T220-300". Correctly used and maintained, this tool will give a satisfactory performance for many years.



Warning

Your device contains numerous recoverable or recyclable materials. Return it to your dealer or, failing this, to an approved servicing centre to be treated.



Comply with the regulations in force in your country as concerns environmental protection associated with your activity.



Warning

It is imperative that you read through the ENTIRE user's manual before using or servicing the tool. Always comply with the instructions and illustrations in the manual.


All through this user guide you will find advisory notes and information entitled: NOTE, IMPORTANT, ATTENTION and WARNING.

The points marked "NOTE" indicate additional information.

The points marked "IMPORTANT" warn the user of a potential risk to the equipment.

The points marked "ATTENTION" warn the user of a potentially hazardous situation which if not avoided leads to minor injuries.

The points marked "WARNING" warn the user of a potentially hazardous situation which if not avoided leads to serious injury or death.

The warning  indicates that damage resulting from failure to comply with the procedures and instructions is not covered by the warranty and the owner will be liable for any repair costs.

Safety indications are also given on the tool; they remind you of the safety precautions to be taken. Identify and read these indications before using the tool. Immediately replace any indications that may become partially illegible or deteriorated.

Refer to Section 2.5, "Stickers" for the location diagram of the safety stickers affixed to the tool.

No part of this manual may be reproduced without the written permission of the company PELLENC. The illustrations given in this manual are for information purposes and are in no way contractual. The PELLENC company reserves the right to make any modification or improvement to its products as deemed necessary without informing customers already in possession of a similar model. This manual forms an integral part of the tool and must accompany the tool if it changes hands.

2. SAFETY

2.1. GENERAL SAFETY WARNINGS FOR THE TOOL



Warning

Read all the safety measures and all the instructions. Failure to comply with the following instructions risks causing electric shock, fire and/or serious injury.

Note

Retain all the safety measures and instructions for later reference.

The term "power tool" in the safety warnings refers to your battery-powered electric tool (without power cord).

2.1.1. WORK AREA SAFETY

1. **Keep the work area clean and well lit.** Cluttered or dark areas invite accidents.
2. **Do not operate power tools in an explosive atmosphere, for example in the presence of flammable liquids, gases or dust.** Power tools create sparks, which may ignite the dust or fumes.
3. **Keep children and bystanders away while operating the power tool.** Distractions can cause you to lose control of the tool.

2.1.2. ELECTRICAL SAFETY

1. **The power tool connector must be adapted to the socket. Never modify the connector in any way whatsoever. Do not use adapter plugs with earthed (grounded) power tools.** Unmodified plugs and suitable sockets reduce the risk of electric shock.
2. **Avoid contact with earthed surfaces such as pipes, radiators, cookers, and refrigerators.** There is an increased risk of electric shock if your body is in direct contact with the ground.
3. **Do not expose power tools to rain or damp conditions.** The entry of water into a power tool increases the risk of electric shock.
4. **Do not mishandle the power cord. Never use the cord for carrying, pulling or unplugging the power tool. Keep cord away from heat, oil, sharp edges and moving parts.** Damaged or entangled cords increase the risk of electric shock.
5. **Use an extension cord suitable for outdoor use when operating power tools outdoors.** Use a cord suitable for outdoors to reduce the risk of electric shock.
6. **Use a power supply protected by a residual current device (RCD) when the power tool is operated in a damp location.** Use of an RCD reduces the risk of electric shock.

Note

The term "Residual Current Device" (RCD) can be replaced by "Ground Fault Circuit Interrupter" (GFCI) or "Earth Leakage Circuit Breaker" (ELCB).

2.1.3. PERSONAL SAFETY

1. **Stay alert, watch what you are doing, and use common sense when operating the power tool. Do not use a power tool while you are tired or under the influence of drugs, alcohol or medication.** A moment of inattention when using a power tool can result in serious personal injury.
2. **Use personal protective equipment. Always wear eye protection.** Safety equipment such as dust masks, non-slip safety shoes, helmets, or ear protection used at the appropriate times reduces injuries.

3. **Avoid accidental starting of the tool. Make sure the switch is in the off position before you connect the tool to the power source and/or battery pack, pick it up, or carry it.** Carrying a power tool with your finger on the switch or connecting a power tool with the switch in the 'on' position can cause accidents.
4. **Remove any adjusting wrench before switching the electric tool on.** A wrench left attached to a rotating part can cause injury.
5. **Do not rush. Keep proper footing and balance at all times.** This provides better control of the power tool in unexpected situations.
6. **Dress appropriately. Do not wear loose clothing or jewellery. Keep hair and clothing away from moving parts.** Loose clothes, jewellery or long hair can get caught in moving parts.
7. **If devices are provided for connecting dust extraction and collection equipment, ensure that these are connected and properly used.** Use dust collectors to reduce the risk caused by dust.

2.1.4. USE AND CARE OF THE POWER TOOL

1. **Do not force the power tool. Use the power tool suited for the job.** The adapted power tool does the work better and more safely at the speed it was built to operate at.
2. **Do not use the power tool if the switch does not allow it to be switched on and off.** Power tools that cannot be controlled by a switch are dangerous and must be repaired.
3. **Unplug the tool from the socket or remove the battery (if possible) before any adjustment, change of accessory or storage.** These preventive safety measures reduce the risk of accidentally starting the power tool.
4. **When not in use, keep power tools out of the reach of children and do not allow persons unfamiliar with the power tool or these instructions to operate it.** Power tools are dangerous when operated by inexperienced users.
5. **Maintenance of the power tool and its accessories is mandatory. Check that the moving parts are not out of alignment or jammed, that there are no broken parts or that there is no other condition which could affect the operation of the power tool. If damaged, repair the power tool before using it.** Many accidents are due to poorly maintained power tools.
6. **Keep the cutting elements sharp and clean.** Properly maintained cutting tools with sharp cutting elements are less likely to jam and are easier to control.
7. **Use the power tool, accessories, blades, etc. in accordance with these instructions, taking into account the working conditions and the work to be done.** Using the power tool for operations other than those specified can result in hazardous situations.

2.1.5. USE OF BATTERY OPERATED TOOLS AND PRECAUTIONS FOR USE

1. **Recharge only with the charger specified by the manufacturer.** A charger that is suitable for one type of battery pack may create a risk of fire when used with another battery pack.
2. **Use power tools only with specifically designated battery packs.** Use of any other battery packs may create a risk of injury and fire.
3. **When battery pack is not in use, keep it away from other metal objects, like paper clips, coins, keys, nails, screws or other small metal objects, that can make a connection from one terminal to another.** Shorting the battery terminals together may cause burns or a fire.
4. **Under abusive conditions, liquid may be ejected from the battery; avoid contact. If contact accidentally occurs, wash away with water. If liquid contacts eyes, seek additional medical help.** Liquid ejected from the battery may cause irritation or burns.

2.1.6. UPKEEP

1. **Have the power tool serviced by a qualified technician using only identical spare parts.** This ensures the continued safety of the power tool.

2.1.7. TOOL'S END OF LIFE MANAGEMENT

1. **When the tool reaches the end of its life, PELLENC keeps the end of life sheet of the equipment at disposal.** The end of life sheet provides instructions for safely removing components.

2.2. SECURITY WARNING FOR THE OLIVION OLIVE HARVESTING SHAKER RAKE


1. Never modify the connector in any way whatsoever.
2. Do not expose tools to the rain or damp conditions.
3. As the material of the pole conducts electricity, always keep the tool well away from power and telephone lines, and any other sources of electric power.
4. THIS TOOL MAY CAUSE INJURIES. Read the instructions carefully about the proper handling, operation, maintenance, start-up and stopping of the tool. Become familiar with its correct use.
5. No one other than the user (s) should stand within 5 metres of the tool in operation (danger of flying fragments).
6. Flying olives can cause injury. Wear protective clothing such as goggles, helmet and gloves when using the tool.
7. Never use the tool if it is damaged, incorrectly adjusted or incompletely assembled.
8. When the machine is not in use, always put the battery in the "0" off position.
9. Remove any adjusting wrenches before switching the tool on.
10. Always use an appropriate lifting tool that complies with the applicable labour regulations for working at heights.
11. When in use, the electric motor of the tool may heat up (risk of burns). Avoid contact with skin, clothing or any flammable products (risk of explosion) during and after use.

2.3. SAFETY MEASURES ASSOCIATED WITH CHARGERS AND BATTERY USE

Note

Please refer to the relevant battery instruction leaflet.

2.4. PERSONAL PROTECTION EQUIPMENT

	Equipment		Wear
	1	Safety helmet	Recommended
	2	Protective visor	--
	3	Resistant work gloves	Required
	4	Safety footwear	Recommended
	5	Ear protection	Recommended
	6	Protective goggles	Required
	7	Jacket or over-sleeves	--
	8	Work trousers	--

2.5. STICKERS



Read the user guide.



Always wear goggles.



Wearing of gloves is mandatory.



Risk of burns (motor)



Electricity conducting materials. Keep away from any power source.



Do not expose to rain.



Lithium-ion battery.

At the end of its life, the battery must be returned to the authorized distributor from whom it was purchased to be recycled in accordance with waste regulations.



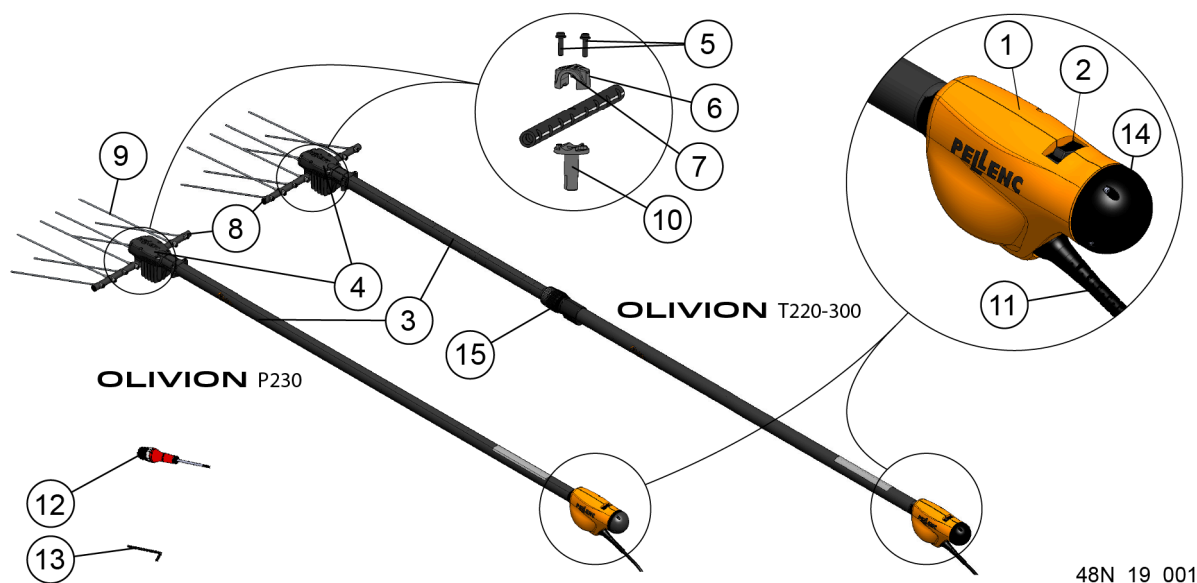
Tool compliant with EC standards.



Equipment compliant with Moroccan standards.

3. DESCRIPTION AND TECHNICAL CHARACTERISTICS

3.1. DESCRIPTION OF THE TOOL

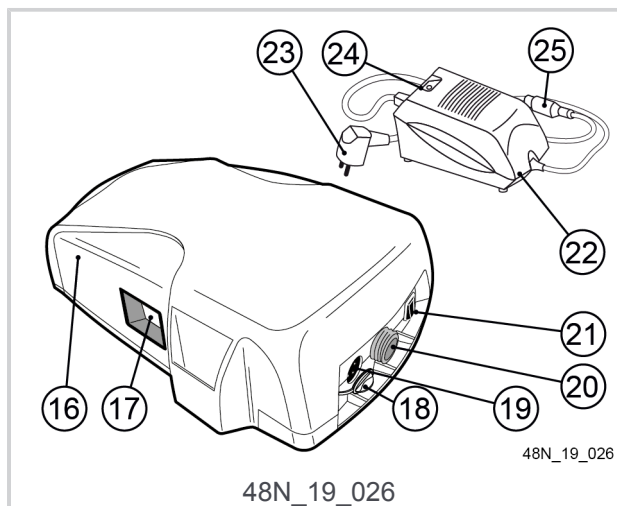


48N_19_001

- | | |
|-----------------------------------|-------------------------|
| 1. Handle | 8. Rake pole tube |
| 2. ON/OFF button | 9. Rake prongs |
| 3. Pole tube | 10. Rake output shaft |
| 4. Vibrating head | 11. Tool power cable |
| 5. Rake attaching screws | 12. Torx screwdriver |
| 6. Rake clamp attachment assembly | 13. Hexagonal wrench |
| 7. Centering stud | 14. Ball end cap |
| | 15. Pole locking system |

3.2. DESCRIPTION OF THE BATTERY (OPTION)

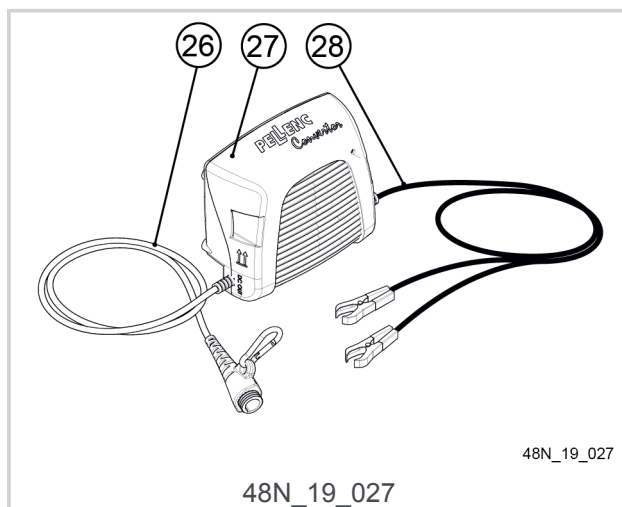
16. Battery
17. Gauge display
18. Charge connector cap
19. Charging connector
20. Tool power cable connector
21. On / Off switch
22. Charger
23. Charger power connector
24. Charger indicator light
25. Charging connector



48N_19_026

3.3. DESCRIPTION OF THE CONVECTOR (OPTION)

- 26. Tool connector
- 27. Converter
- 28. Battery lug connectors



3.4. TECHNICAL CHARACTERISTICS

General characteristics

	Olivion P230	Olivion T220-300
Weight	2.6 kg	3.2 kg
Power	380 W	
Voltage	43.2 V	
Rake width	374 mm	
Pole	Fixed	Telescopic
Length	2.3 m	2.2 m to 3 m
"Pulse" mode	no	
"Continuous" mode	yes	
Rake setting	yes	
Size	2300 x 374 x 110 mm	3000 x 374 x 110 mm
Rate	830 cycles/min	
ULiB batteries recommended	Ulib 400 / Ulib Olivion+ / Ulib 700 / Ulib 1100 / 1200 / 1500 Converter + 12 V 60 A battery	
Options	<ul style="list-style-type: none"> • 10.30 m extension • 8 prongs kit • 16 prong foam covers kit • Auxiliary handle • Anti-vibration handles 	

Vibration emission values and Sound pressure levels

	Olivion P230		Olivion T220-300			
	Free	Loaded	Pole retracted		Pole extended	
			Free	Loaded	Free	Loaded
Vibration emission value	15.5 m/s ²	10.5 m/s ²	15.5 m/s ²	10.5 m/s ²	14.5 m/s ²	13.0 m/s ²
Front hand:	7.5 m/s ²	8.5 m/s ²	7.5 m/s ²	8.5 m/s ²	8.5 m/s ²	7.5 m/s ²
Rear handle:						
Measurement uncertainty, K	3.0 m/s ²	3.0 m/s ²	3.0 m/s ²	3.0 m/s ²	3.0 m/s ²	3.0 m/s ²
Maximum weighted sound pressure level A (ref. 20 µPa) at the user's position	79 dB		79 dB		76 dB	
Measurement uncertainty, K	2.5 db.		2.5 db.		2.5 db.	
Weighted peak sound pressure level C (ref. 20 µPa) at the user's position	<130 dB		<130 dB		<130 dB	

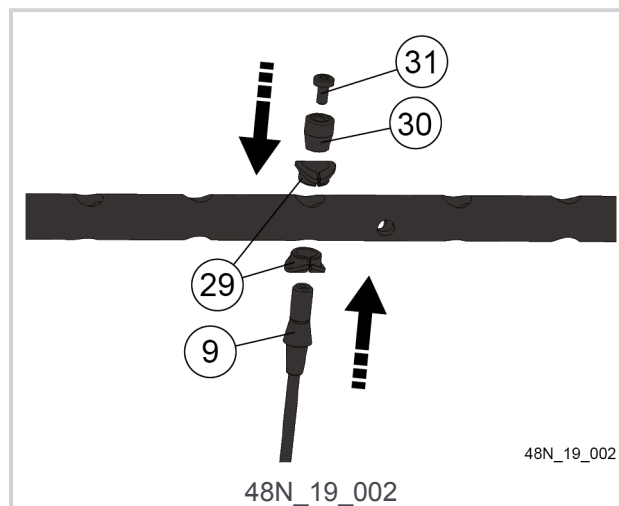
Vibration emission values determined using the EN ISO 22867 and EN 60745-1 standards, values determined using acoustic measurement standards EN ISO 11201 and EN ISO 3744.

4. COMMISSIONING

4.1. ASSEMBLING THE TOOL

Fitting the prongs

1. Install the 2 split washers (29) making sure that the support fits perfectly with the profile of the rake tube.
2. Introduce the prong (9).



Important

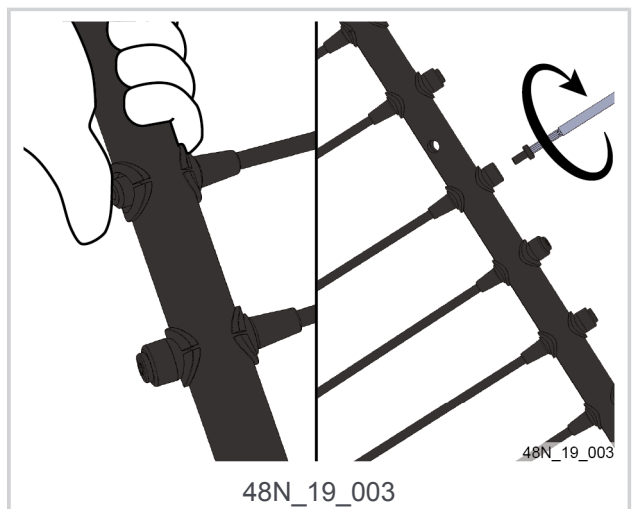
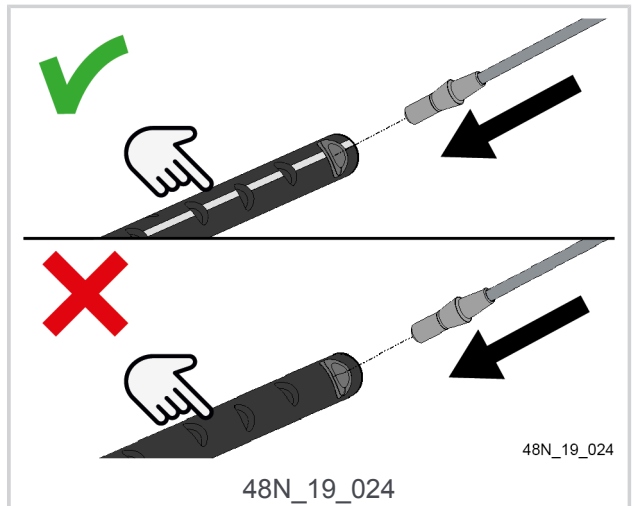
Make sure to properly introduce the prong on the side of the rake marked with the white line.

1. Hold the prong support on the rake tube
2. fit the washer and screw provided with the prong.

Important

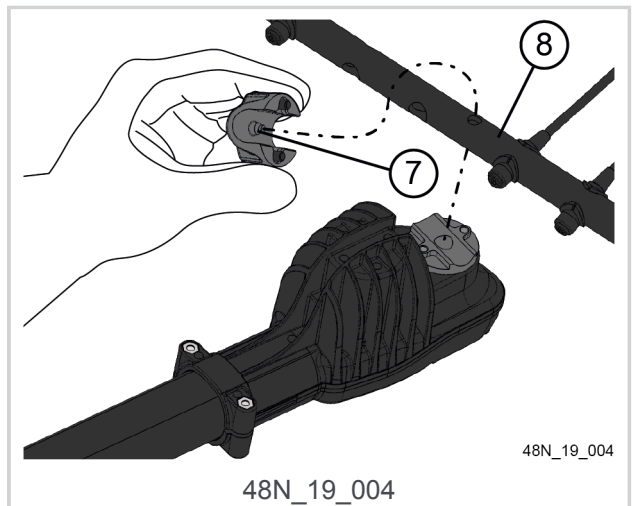
Maximum tightening torque: 2 N m

Proceed in the same manner for each prong.



Assembling the rake

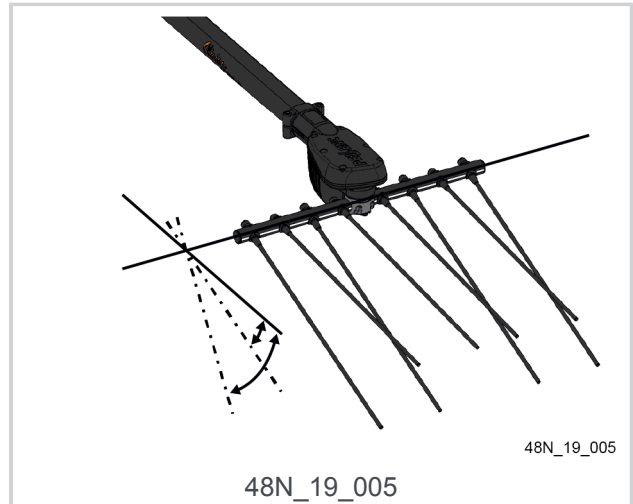
- Fit the rake (8) in the half-clamp assembly, taking care to align the rake hole with the centering stud (7).



Note

The rake can be mounted in the following two positions:

- Horizontally for frontal work with strong vibration amplitude.
- Inclined for aerial work with a moderate vibration amplitude.



1. Retighten the screws retaining the half-clamp assembly.
2. Tighten until the lower face of the half-clamp assembly comes into contact with the vibration head plate (7).

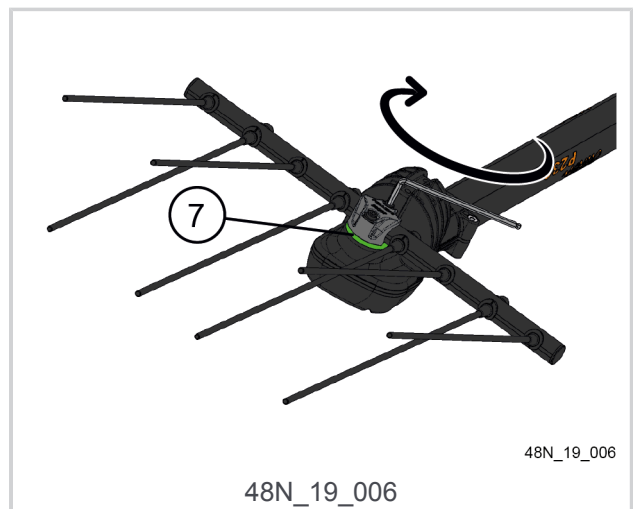
Important

Maximum tightening torque: 5 N m



Warning

Never add an extension handle to the wrench to increase tightening power, as this could cause damage to the tool. Check everything is tight every day.



4.2. ADJUSTMENT OF THE TELESCOPIC POLE

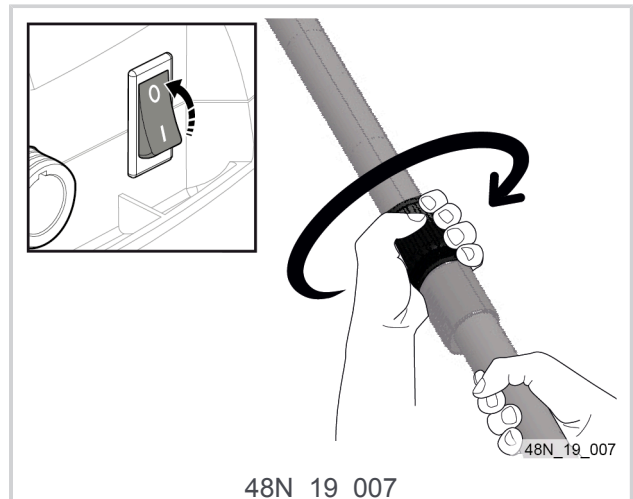


Caution

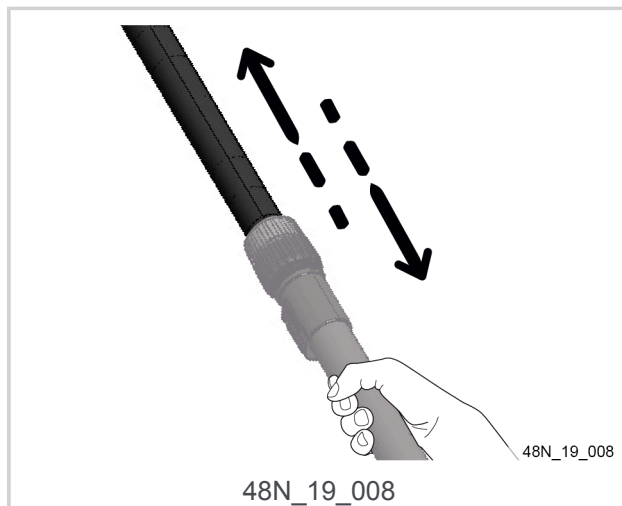
Make sure the battery is off and the tool is not connected to a power source.

Always adjust the pole with the switch at "0".

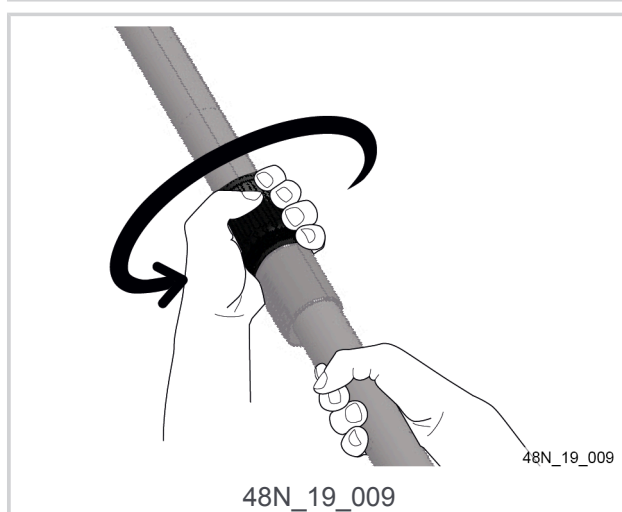
- Unlock the thumbwheel knob (1) by turning it clockwise.



- Adjust the length of the telescopic pole according to the working conditions.



- Tighten the thumbwheel knob (1).



4.3. OLIVION LOCKING KIT ASSEMBLY

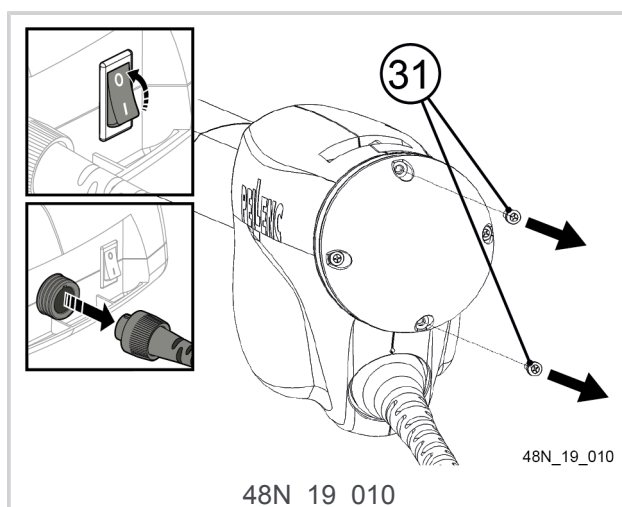


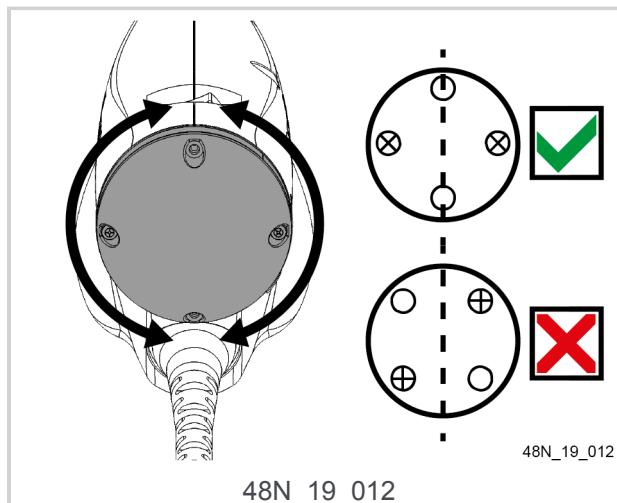
Caution

Make sure the battery is off and the tool is not connected to a power source.

Always adjust the pole with the switch at "0".

- Loosen the 2 plastite M3x20 screws (31)

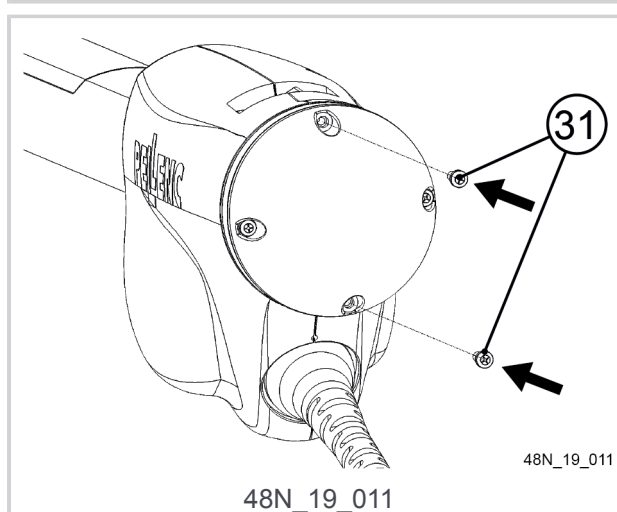




2. Tighten the 2 plastite M3x20 screws (31)

Important

Maximum tightening torque: 1.5 N m Max.

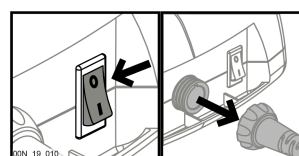


4.4. ADJUSTING THE ORIENTATION OF THE SHAKER RAKE

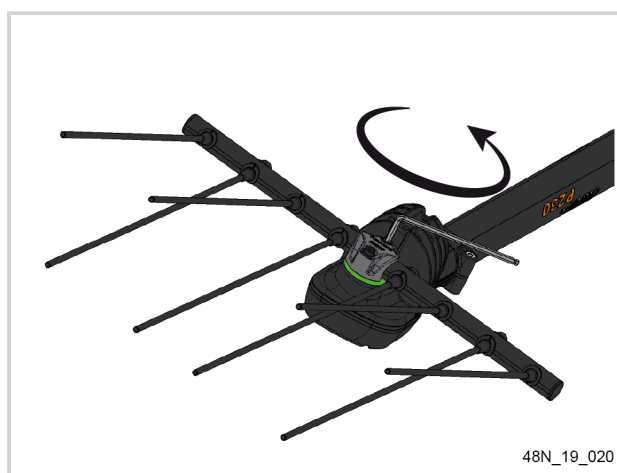


Caution

Ⓢ Before working on the tool, check that the On / Off switch is in the off position «0» and disconnect the battery power cable.



1. Use the provided wrench to unscrew the rake clamp assembly screw and remove the rake.

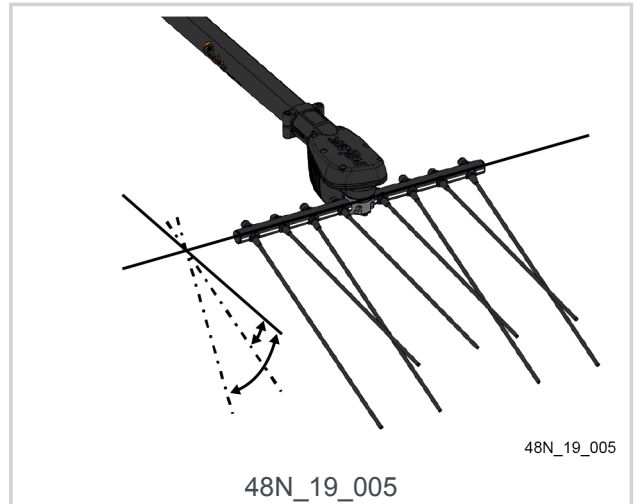


- Adjust the orientation of the shaker rake according to the type of work to be done

Note

The rake can be mounted in the following two positions:

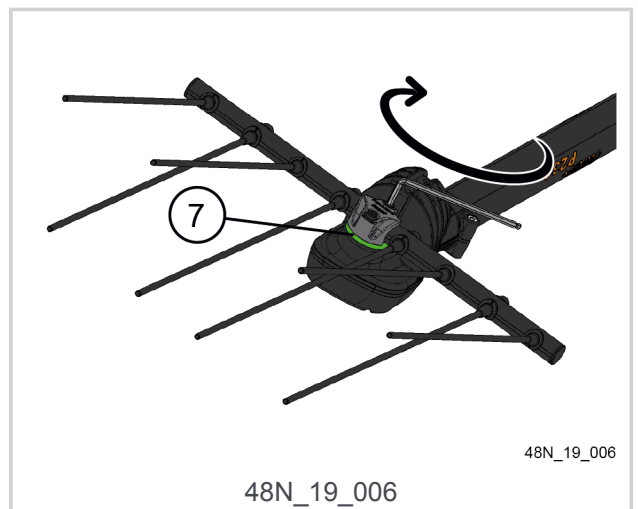
- Horizontally for frontal work with strong vibration amplitude.
- Inclined for aerial work with a moderate vibration amplitude.



- Retighten the screws retaining the half-clamp assembly.
- Tighten until the lower face of the half-clamp assembly comes into contact with the vibration head plate (7).

Important

Maximum tightening torque: 5 N m



Warning

Never add an extension handle to the wrench to increase tightening power, as this could cause damage to the tool. Check everything is tight every day.

5. USE

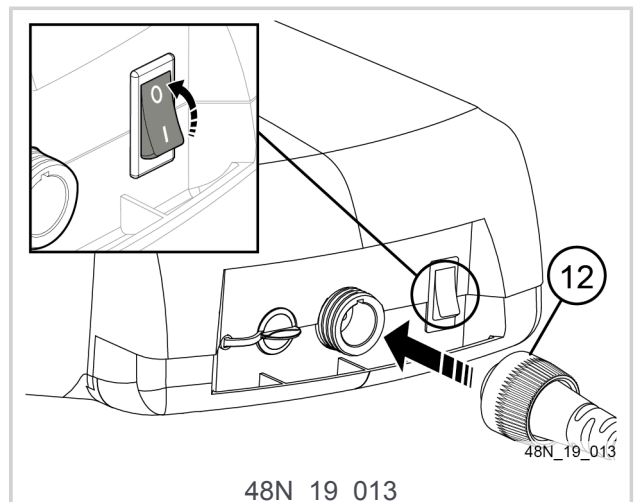
5.1. TOOL CONNECTION



Warning

Never disconnect the tool power cable without first checking that the ON/OFF switch has been set to "0" (off).

- Make sure that the battery ON/OFF switch is set to "0"
- Connect the tool's power cable (12) to the battery connector.



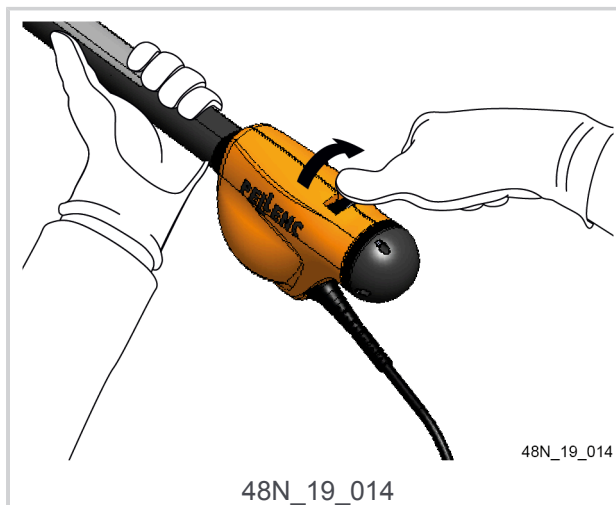
5.2. START-UP IN "CONTINUOUS" MODE

1. Flip the ON/OFF switch of the battery to "I" (on).
2. Wait for the battery to beep 3 times

Note

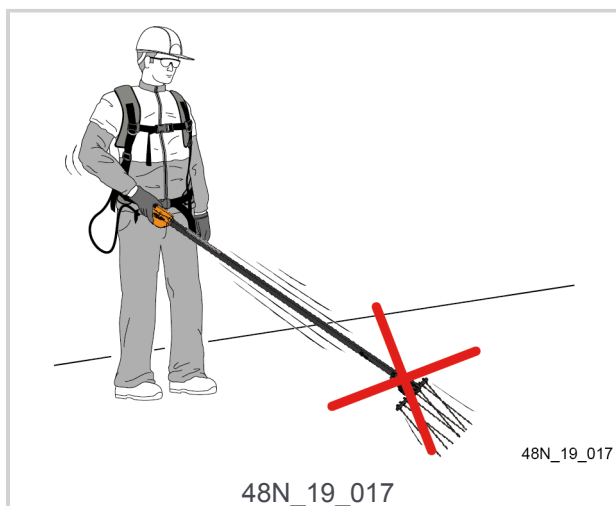
The tool is now energized and ready to operate in "continuous" mode.

3. Set the tool switch to "I" to start the tool.



Warning

Never operate the tool when the rake is resting on the ground.



Caution

In the case of overheating or overcurrent, the tool safety mechanism stops the tool. Wait until the tool cools and turn on the battery.

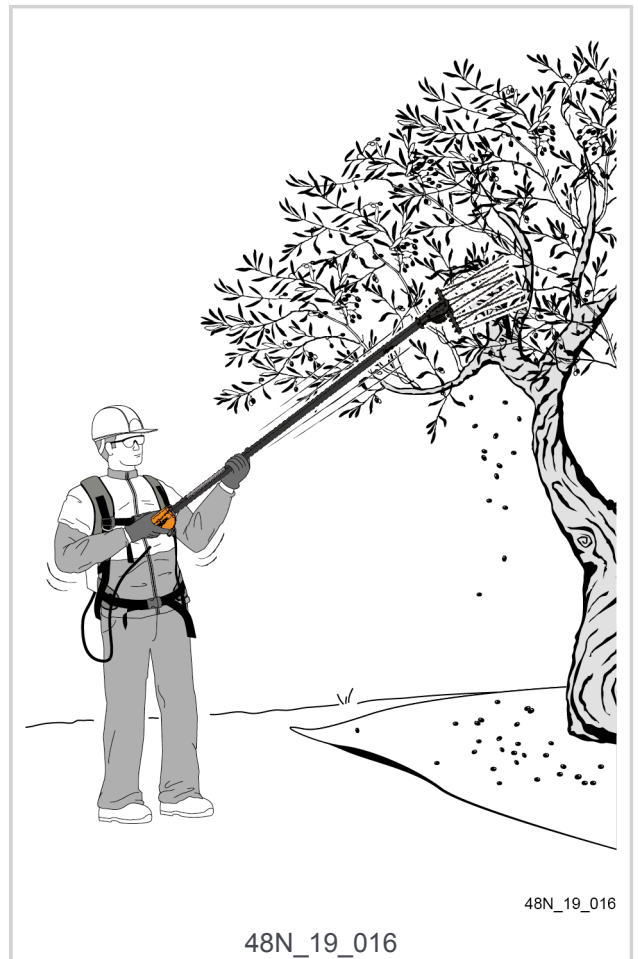
5.3. OPERATING TIPS

1. Grasp the tool holding the ball end cap with one hand and the pole with the other.
2. Introduce the rake into the foliage.
3. Stop the shaking action once the olives are on the ground.



Warning

- Never start the tool with the vibration rake already in the foliage.
- Never operate the tool for extended periods outside the foliage.
- Always switch off the picker when transiting from one branch to another or from one tree to another.
- Do leave the battery lying out in the sun.



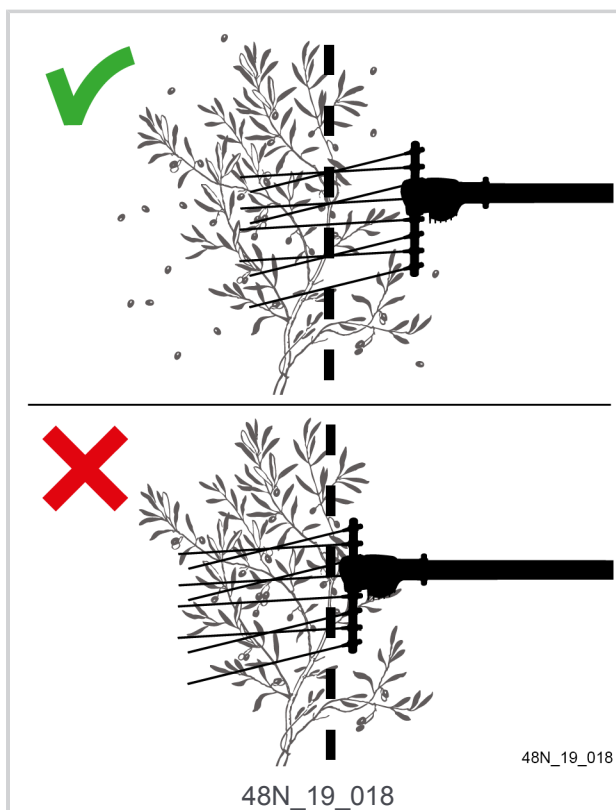
Important

- Becoming familiar with the OLIVION tool entails several hours practice and adaptation of the harvesting system (wide nets).
- It is preferable to start from the inside and work outwards to avoid stepping on the fallen olives.
- Start harvesting at the root of the branch and work towards its tip (in the direction of the foliage) to optimize the drop pattern of the olives.
- Do not hesitate to change the position of the rake in the foliage (see Section 4.4, "Adjusting the orientation of the shaker rake").
- Do not grip the tool too tightly in order to minimize the vibrations transmitted to the upper arms, and to lessen the working fatigue.
- If the tool experiences a sudden jolt in the foliage, it may go to safe mode and stop.
- To restart, turn the tool off and on again by pressing the On/Off switch on the battery



Caution

Avoid introducing the rake's prongs more than half way into the foliage so as not to damage the branch and fruit, and to ensure the best results.



6. MAINTENANCE

6.1. FREQUENCY

General characteristics

	At each start-up	After use	Every year or every 200hrs
Cleaning the machine		X	
Visual inspection of the tool	X	X	
Checking the of the prongs of the rake		X	
Checking the tightening of the rake		X	
Checking the tightening of the prongs		X	
Checking the battery	X		
Have the tool inspected by an authorized distributor			X

6.2. CLEANING



Warning

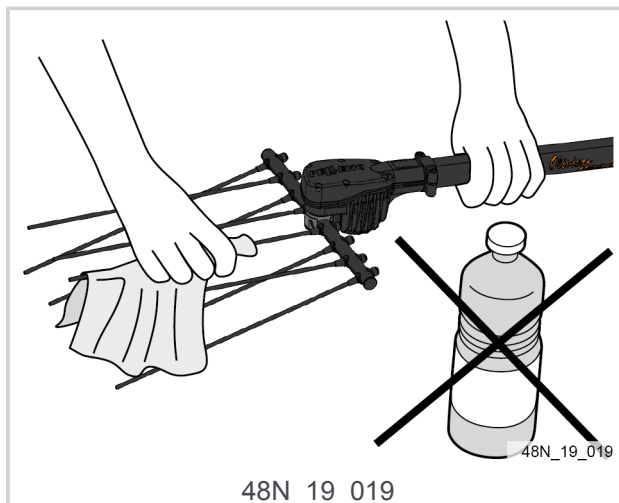
Ⓒ Have your Olivion tool overhauled every 200 hours or at least once a year.

Keep the tool clean by cleaning it frequently using a damp cloth and compressed air. Thoroughly clean the parts in contact with the foliage, i.e. the rake, and rake prongs.



Warning

Ⓢ Never use solvents (trichloroethylene, white spirit, petrol, etc.) to clean the tool.

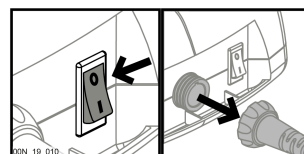


6.3. REPLACING THE PRONGS

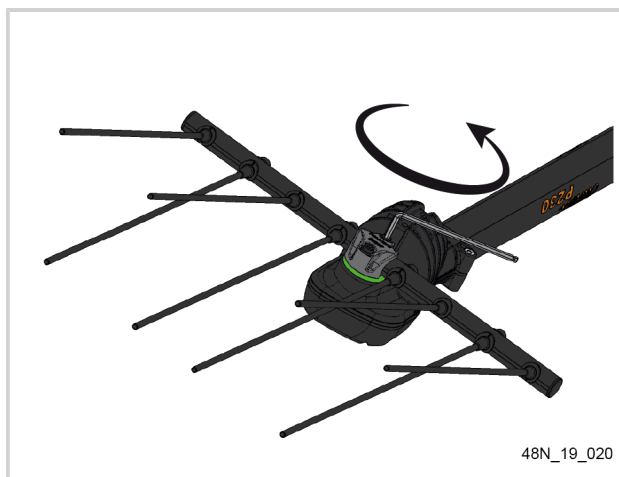


Caution

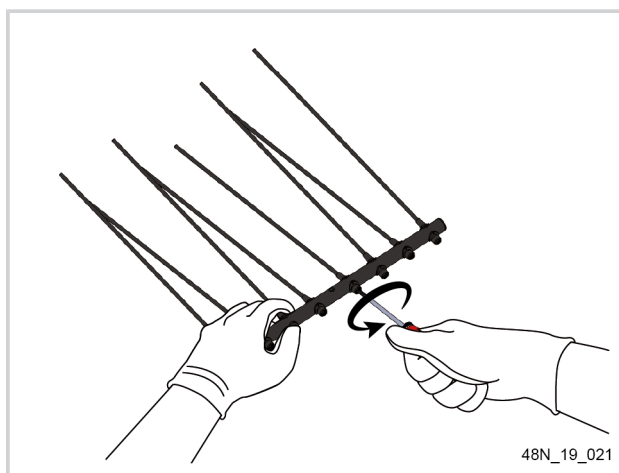
Ⓢ Before working on the tool, check that the On / Off switch is in the off position «0» and disconnect the battery power cable.



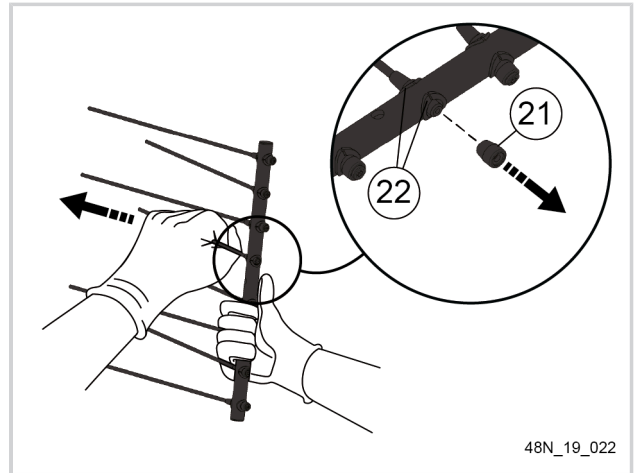
1. Use the provided wrench to unscrew the rake clamp assembly screw and remove the rake.



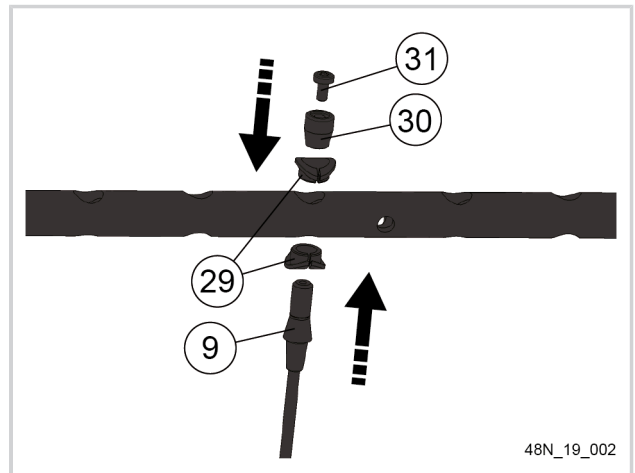
2. Use the provided screwdriver to unscrew the prong fixation screw.



3. Use the screwdriver to remove the washer (21) and remove the prong from its slot.
4. Remove the 2 split washers (22).

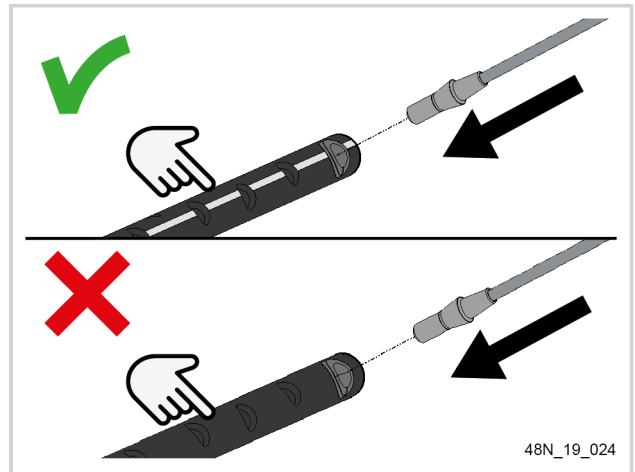


5. Install the 2 split washers (29) making sure that the support fits perfectly with the profile of the rake tube.
6. Fit a new prong (9)



Caution

Make sure to properly introduce the prong on the side of the rake marked with the white line.



7. Keep the prong seated on the rake tube, fit the new washer and the screw provided with the new prong.

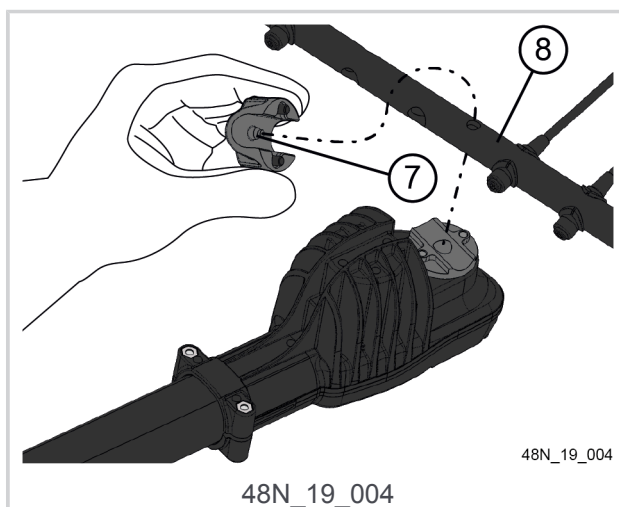
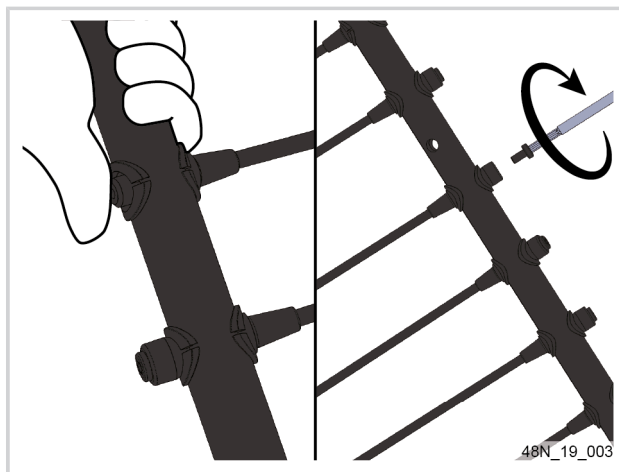


Caution

Maximum tightening torque: 2 N m

8. Proceed in the same manner for each prong.
9. Then, fit the rake on the tool

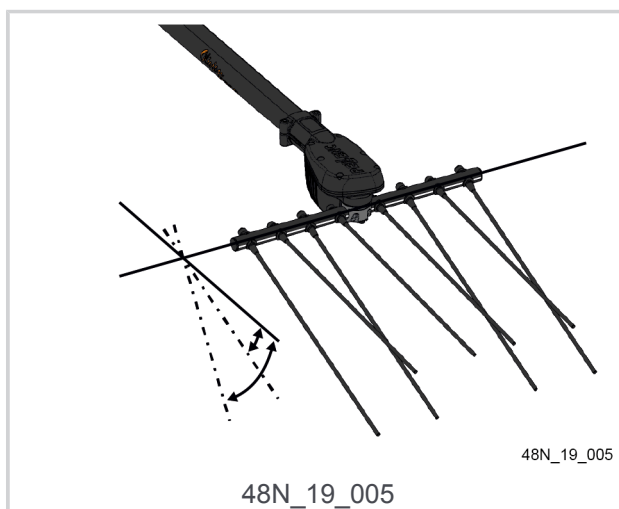
10. Fit the rake (8) in the half-clamp assembly, taking care to align the rake hole with the centering stud (7).



Note

The rake can be mounted in the following two positions:

- Horizontally for frontal work with strong vibration amplitude.
- Inclined for aerial work with a moderate vibration amplitude.



11. Retighten the screws retaining the half-clamp assembly.
12. Tighten until the lower face of the half-clamp assembly comes into contact with the vibration head plate (7).

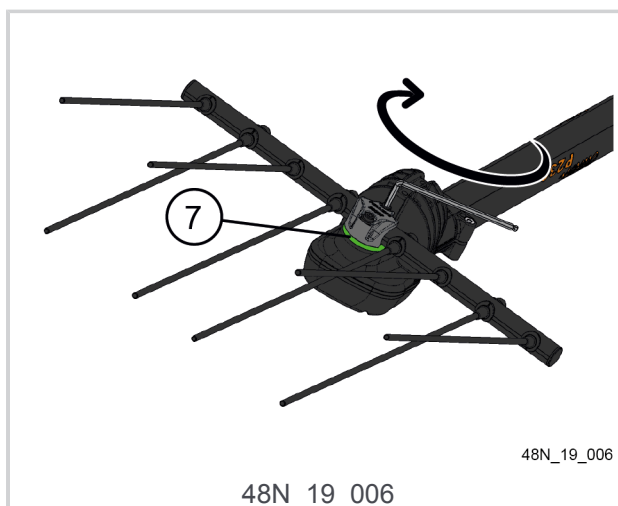
Important

Maximum tightening torque: 5 N m



Warning

Never add an extension handle to the wrench to increase tightening power, as this could cause damage to the tool. Check everything is tight every day.



7. INCIDENTS AND TROUBLESHOOTING

7.1. FREQUENCY

General characteristics

Symptoms	State of the on/off switch of the battery	Probable cause	Check	Solutions	Repairer
The machine does not start	0	Battery is off	Battery switch	Flip the battery switch	User
	I	The power cable is severed	Check the condition of the cord	Change the cord	PELLENC authorised distributor
		Battery	Check that the battery is not completely discharged	Charge the battery	User
		Electronic circuit board	At an authorised PELLENC distributor	Change the circuit board	PELLENC authorised distributor
The machine makes an unusual noise	I	presence of a play between the rake (8), the fixing half-clamp assembly (7) and the rake output shaft (10)	Check the tightness between the rake (8), the fixing half-clamp assembly (7) and the rake output shaft (10)	Tightening the fixing screws of the rake (5) to 5 Nm maximum	User
		presence of a play between one or more prongs (9) and the rake (8)	Check the tightness of each prong (9) and the rake (8)	Tightening of prongs (9) to a maximum 2 N.m	User
The machine stops during use	I	The machine has reached its temperature limit	4 beeps from the battery	Let the machine cool for about 5 mins	User
		To stop and restart the battery, if the Olivion still does not start, refer to the passage corresponding to the symptom "The machine does not start"			

8. STORAGE AND TRANSPORT

8.1. STORING THE TOOL

- Store the Olivion tool, its battery and charger in a cool area protected from dust and humidity between 0 °C and 40 °C.
- Keep the original packaging for storing the machine.
- Store the machine in a dry place out of children's reach.

8.2. STORING THE BATTERY

- Store the battery pack and the charger away from heat, dust and moisture, and check that the switch (21) is in the "0" off position.

- To ensure long battery life, the battery should be stored in a dry and warm place between 0 °C and 25 °C.
- To preserve the longevity of the battery and prevent its deterioration, it is imperative to **store the charged battery** and to **re-charge it every 10 months** in case of non-use.
- Do not operate the switch while in storage.
- No combustible objects should be stored within 1.5 metres of the battery.



Warning

Never store the battery in an ambient temperature of **more than +45 °C**.

Note

If the battery is not used for 4 or 10 days (depending on the model or production batch), the battery automatically discharges to its storage charge rate, then goes to sleep mode. Warming up occurs during this phase.

8.3. TRANSPORT

- Always disconnect the battery from the tool during transport

9. ACCESSORIES AND CONSUMABLES

9.1. ACCESSORIES

General characteristics

Accessories	Reference
10.30 m extension	100994
8 prongs kit	41357
16 prong foam covers kit	50538
Auxiliary handle	
Anti-vibration handles	

10. WARRANTIES

10.1. GENERAL WARRANTIES

10.1.1. STATUTORY WARRANTY

- 10.1.1.1. LATENT DEFECTS WARRANTY

Apart from the commercial warranty provided for under Article II, Article 1641 of the Civil Code provides that "the seller is bound to a warranty on account of latent defects of the object sold which render it unfit for the use for which it was intended, or which would impair said use to the extent that the buyer would not have acquired it, or would only have given a lesser price for it, had he known of them".

Article 1648 of the Civil Code "The action resulting from latent defects must be brought by the purchaser within two years after the discovery of the defect. "

- 10.1.1.2. LEGAL WARRANTY OF CONFORMITY

Article L.217-4 of the Consumer Code "The seller delivers goods in conformity with the contract and is liable for defects of conformity existing upon delivery.

The seller is also liable for any lack of compliance resulting from the packaging, assembly or installation instructions whenever its contractual liability is engaged in this regard or the latter are carried out under its responsibility

Article L.217-5 of the French Consumer Code "Goods are compliant with the contract":

1. Where they are fit for the purpose normally expected of similar goods and, where applicable:
 - If it matches the description given by the seller and possesses the qualities that were presented to the purchaser in the form of a sample or model;
 - If it possesses the qualities that a purchaser can reasonably expect given the public statements made by the seller, the producer or its representative, especially in advertising or labelling;
2. Or, if it has the characteristics defined by mutual agreement of the parties or is fit for any particular purpose that the buyer made known to the seller and that the latter accepted.

Article L.217-12 of the Consumer Code "legal action resulting from lack of conformity lapses two years after delivery of the goods".

10.1.2. COMMERCIAL WARRANTY PELLENC**- 10.1.2.1. CONTENT****10.1.2.1.1. GENERAL INFORMATION**

In addition to legal warranties, client users benefit from the commercial warranty on products PELLENC covering the exchange and replacement of parts recognised as being out of order, due to machining defects, assembly defects or material defects, whatever the cause.

The warranty is fully integral to the product sold by PELLENC.

10.1.2.1.2. SPARE PARTS

The commercial warranty also covers original PELLENC spare parts, excluding labour and to the exclusion of certain parts of each product provided at delivery.

- 10.1.2.2. DURATION OF THE WARRANTY**10.1.2.2.1. GENERAL INFORMATION**

PELLENC Products are guaranteed under the commercial warranty as from delivery to the customer for a period of two (2) years for products connected to a PELLENC battery, and for a period of one (1) year for other PELLENC products.

10.1.2.2.2. SPARE PARTS

PELLENC Replacement parts replaced under the product warranty are guaranteed under the commercial warranty as from delivery of the PELLENC product to the customer user for a period of two (2) years for products connected to a PELLENC battery, and for a period of one (1) year for other PELLENC products.

In the case of products connected to a PELLENC battery, parts that are replaced under the product warranty after the 12th month of use, are covered for a period of one (1) year.

10.1.2.2.3. WARRANTY EXCLUSIONS

Excluded from the commercial warranty are products that have been subject to abnormal use, or were used under conditions and for purposes other than those for which they were manufactured, especially in the case of non-compliance with conditions stipulated in this user manual.

It does not apply in case of shock, fall, neglect, lack of supervision or maintenance or in case of transformation of the product. Also excluded from the warranty are products that have been subject to tampering, alteration or modification by the client user.

Wear parts and/or consumables cannot be covered by the warranty.

- 10.1.2.3. IMPLEMENTATION OF THE COMMERCIAL WARRANTY

10.1.2.3.1. PRODUCT COMMISSIONING AND COMMISSIONING DECLARATION

The DISTRIBUTOR undertakes to complete the computer commissioning declaration form, no later than eight days after the delivery of the property to the user customer, in order to activate the latter on the www.pellenc.com website under "warranties and training" in the "extranet" menu, using the identifier previously provided to them by PELLENC.

Failing that, commissioning declaration will not be effective and implementation of the commercial warranty PELLENC will not occur. As a consequence thereof, the DISTRIBUTOR must ensure the financial burden of its intervention under the warranty without being able to pass on the cost to the client user.

The DISTRIBUTOR shall also undertake to complete the warranty card or the certificate of warranty and commissioning for self-propelled equipment provided with the product after having the client user sign and date it.

10.1.3. PAID AFTER-SALES SERVICE

- 10.1.3.1. GENERAL INFORMATION

Malfunctions, breakdowns, breakages resulting from misuse, neglect or improper maintenance by the client user as well as malfunctions resulting from normal wear of the product are subject to the payment of after-sales service, even during the period of the legal and commercial warranty. After-sales service repairs that fall outside of the legal and commercial warranty also include maintenance, adjustments, diagnostics of all types, and cleaning without the present list being exhaustive.

- 10.1.3.2. WEAR PARTS AND CONSUMABLES

Wear parts and consumables also fall within the after-sales service.

- 10.1.3.3. SPARE PARTS

Paid after-sales service also covers original PELLENC spare parts, excluding labour and outside the legal and commercial warranty period.

In case of replacement of original PELLENC spare parts in the context of after-sales service, said latter are covered by a warranty of one year as from the installation date.

11. COMPLIANCE STATEMENTS

11.1. "EC" DECLARATION OF CONFORMITY: OLIVION

MANUFACTURER	PELLENC
ADDRESS	Quartier Notre-Dame - 84120 Pertuis (France)
ENTITY AUTHORIZED TO COMPILE THE TECHNICAL FILE	PELLENC
ADDRESS	Quartier Notre-Dame - 84120 Pertuis (France)

We hereby declare that the machine referred to below as:

GENERIC DENOMINATION	Olive harvesting shaker rake	
FUNCTION	Tool for harvesting olives	
COMMERCIAL NAME	"Olivion P230 / T220-300"	
TYPE	"Olivion P230 / T220-300"	
MODEL	P 230	T 220-300
SERIAL No.	48U00001 - 48U49999 48V00001 - 48V49999 48W00001 - 48W49999	

Complies with the relevant provisions of the machinery directive (2006/42/EC).

Complies with the provisions of the following European directives:

- 2014/30/EU EMC Directive
- 2011/65/EU ROHS Directive
- 1907/2006 REACH Regulation
- 2012/19/EU WEEE Directive

The following harmonised European standards have been used in whole or in part:

- EN 60745-1 : 2009 + A11: 2010

Vibration emission values and Sound pressure levels

	Olivion P230		Olivion T220-300			
	Free	Loaded	Pole retracted		Pole extended	
			Free	Loaded	Free	Loaded
Vibration emission value	15.5 m/s ²	10.5 m/s ²	15.5 m/s ²	10.5 m/s ²	14.5 m/s ²	13.0 m/s ²
Front hand:	7.5 m/s ²	8.5 m/s ²	7.5 m/s ²	8.5 m/s ²	8.5 m/s ²	7.5 m/s ²
Rear handle:						
Measurement uncertainty, K	3.0 m/s ²	3.0 m/s ²	3.0 m/s ²	3.0 m/s ²	3.0 m/s ²	3.0 m/s ²
Maximum weighted sound pressure level A (ref. 20 µPa) at the user's position	79 dB		79 dB		76 dB	
Measurement uncertainty, K	2.5 db.		2.5 db.		2.5 db.	
Weighted peak sound pressure level C (ref. 20 µPa) at the user's position	<130 dB		<130 dB		<130 dB	

The measured sound level and the guaranteed sound power level were measured according to a procedure in accordance with Directive 2000/14 / EC Annex V.

SIGNED IN PERTUIS, DATED 06/02/2020

JEAN-MARC GIALIS

CEO

A handwritten signature in black ink, consisting of a large loop followed by a horizontal stroke and a smaller loop.

PELLENC

   www.pellenc.com

PELLENC
Quartier Notre Dame - 84120 Pertuis (France)

