

ENG

Translated from the original manual



BRUSH CUTTER AND GRASS TRIMMER EXCELION E DH

Operating
Instructions Manual

53_185856-A
04/2025

READ THE USER OPERATING GUIDE CAREFULLY BEFORE USE

TABLE OF CONTENTS

1. INTRODUCTION	6
2. SAFETY	7
2.1. GENERAL POWER TOOL SAFETY WARNINGS	7
2.1.1. WORK AREA SAFETY	7
2.1.2. ELECTRICAL SAFETY	7
2.1.3. PERSONAL SAFETY	7
2.1.4. POWER TOOL USE AND CARE	8
2.1.5. BATTERY TOOL USE AND CARE	8
2.1.6. SERVICE	9
2.2. GRASS TRIMMER, BRUSH CUTTER AND BRUSH SAW SAFETY WARNINGS	9
2.3. BLADE THRUST CAUSES AND RELATED WARNINGS	10
2.4. USE OF THE DEVICE BY CHILDREN AND PEOPLE WITH REDUCED ABILITIES	10
2.5. SAFE OPERATING PRACTICES	10
2.5.1. TRAINING	10
2.5.2. PREPARATION	10
2.5.3. OPERATION	11
2.5.4. MAINTENANCE AND STORAGE	11
2.6. SAFETY WARNINGS RELATING TO THE BRUSH CUTTER AND GRASS TRIMMER EXCELION E DH	11
2.7. MANAGEMENT OF THE RECYCLING AND RECOVERY OF WASTE FROM YOUR TOOL	11
2.8. SAFETY MEASURES ASSOCIATED WITH BATTERY USE	12
2.9. SAFETY SIGNAGE	13
2.10. PERSONAL PROTECTION EQUIPMENT	14
3. DESCRIPTION AND TECHNICAL FEATURES	15
3.1. DESCRIPTION OF THE TOOL	15
3.2. TECHNICAL FEATURES	16
3.2.1. TOOL FEATURES	16
3.2.2. FEATURES OF THE CUTTING HEAD PROVIDED	16
3.2.3. FEATURES OF THE OPTIONAL BLADE	16
3.2.4. VIBRATION AND NOISE EMISSION VALUES	16
4. START-UP	17
4.1. PACKAGE CONTENTS	17
4.2. ASSEMBLY/DISASSEMBLY THE BATTERY ADAPTER COVERS	17
4.2.1. ASSEMBLY OF THE ADAPTER COVER FOR THE 400 E BATTERY	17
4.2.2. DISASSEMBLY OF THE ADAPTER COVER FOR THE 400 E BATTERY	18
4.3. FITTING / DISMOUNTING OF THE HANDLE ON THE BRUSH CUTTER AND GRASS TRIMMER	18
4.3.1. MOUNTING THE HANDLEBAR ON THE TOOL	18
4.3.2. HANDLEBAR INCLINATION ADJUSTMENT	19
4.3.3. PUTTING THE HANDLEBAR INTO STORAGE POSITION	20
4.4. ASSEMBLY/DISASSEMBLY OF THE SAFETY GUARD	20



4.4.1. FITTING THE STANDARD SAFETY GUARD	20
4.4.2. DISMOUNTING THE STANDARD SAFETY GUARD	21
4.5. FITTING AND DISMOUNTING OF THE TAP CUT 3	21
4.5.1. FITTING THE TAP CUT 3 ONTO THE TOOL	21
4.5.2. FITTING A STRIMMER WIRE	22
4.5.3. DISMOUNTING THE TAP CUT 3 FROM THE TOOL	23
4.6. FITTING/DISMOUNTING THE TRIDENT BLADE ON THE TOOL	24
4.6.1. FITTING THE TRIDENT BLADE ON THE TOOL	25
4.6.2. DISMOUNTING THE TRIDENT	26
4.7. CONNECTING THE E BATTERIES TO THE TOOL	27
4.8. DISCONNECTING THE E BATTERY FROM THE TOOL	28
4.9. ADJUSTING THE WORKING POSITION	28
4.9.1. INSTALLING AND ADJUSTING THE HARNESS	28
4.9.2. REMOVING THE HARNESS	30
5. USE	31
5.1. SWITCHING ON THE TOOL	31
5.2. UNLOCKING AND STARTING THE TOOL	31
5.3. STOPPING THE TOOL	32
5.4. SELECTING WORKING SPEED	32
5.5. TIPS FOR USE AND WORKING TECHNIQUES	33
5.5.1. CHOICE OF THE RIGHT CUTTING HEAD ACCORDING TO THE USE	33
5.5.2. ADVICE FOR OPTIMIZING THE BATTERY	34
5.5.3. TIPS ON USE AND MOWING TECHNIQUES	34
6. SERVICE	37
6.1. MAINTENANCE ADVICE	37
6.2. MAINTENANCE TABLE	37
6.3. CHECK	37
6.3.1. ANNUAL OVERHAUL	37
6.3.2. VISUAL CHECK OF THE GENERAL CONDITION OF THE TOOL	38
6.3.3. CHECKING THE TRIGGERS	38
6.4. CLEANING	38
6.4.1. CLEANING THE TOOL	38
6.4.2. CLEANING THE TAP CUT 3	39
6.5. GREASING	40
6.5.1. ANGLE GEAR LUBRICATION	40
6.5.2. GREASING OF THE MOTOR REDUCER	40
7. INCIDENTS AND TROUBLESHOOTING	41
8. STORAGE AND TRANSPORT	43
8.1. TRANSPORTING THE TOOL	43
8.2. TEMPORARY STORAGE	43
8.3. STORING THE TOOL	43
9. ACCESSORIES AND CONSUMABLES	44
9.1. ACCESSORIES INCLUDED	44
9.2. OPTIONAL ACCESSORIES	44

9.3. OPTIONAL CUTTING TOOLS	45
9.4. TAP CUT STRIMMER WIRE	45

10. WARRANTIES 45

10.1. GENERAL WARRANTIES	45
10.1.1. STATUTORY WARRANTY	45
10.1.2. COMMERCIAL WARRANTY PELLENC	46
10.1.3. PAID AFTER-SALES SERVICE	47

11. STATEMENTS OF COMPLIANCE 48

11.1. DECLARATION  OF COMPLIANCE: EXCELION E DH	48
11.2. UK DECLARATION OF CONFORMITY  : EXCELION E DH	50

1. INTRODUCTION

Dear Customer,

Thank you for purchasing your Brush cutter and grass trimmer Excelion E DH. Properly used and maintained, this equipment will give you years of satisfaction.



Warning

In accordance with product liability laws, we are not responsible for damage caused by our product if the product includes an accessory that is not from the manufacturer or is not approved by the manufacturer. The use of any other accessory may increase the risk of injury.



Warning

Your device contains numerous recoverable or recyclable materials. Return it to your dealer or, failing this, to an approved servicing centre to be treated.



Comply with the regulations in force in your country as concerns environmental protection associated with your activity.



Warning

It is imperative that you read through the ENTIRE user's manual guide before using or servicing the tool. Always comply with the instructions and illustrations in the manual.


Throughout the user's manual guide you will find advisory notes and information entitled: NOTE, IMPORTANT, ATTENTION and WARNING.

Points marked "NOTE" indicate additional information.

Points marked "IMPORTANT" warn the user of a potential risk for the equipment.

Points marked "CAUTION" warn the user of a potentially hazardous situation which if not avoided may result in minor injuries.

Points marked "WARNING" warn the user of a potentially hazardous situation which if not avoided may result in serious injury or death.

The warning  indicates that damage resulting from failure to comply with the procedures and instructions is not covered by the warranty and the owner will be liable for any repair costs.

Safety signs on the tool also indicate the safety precautions to be observed. Locate these signs and read them before using your machine. Any partially illegible or damaged sign should be replaced immediately.

Refer to 2.9. Safety signage, page 13 for the location diagram of the safety stickers affixed to the tool.

No part of this manual may be reproduced without the written permission of the PELLENC company. The illustrations provided in this manual are for information purposes only and are in no way contractual. The PELLENC company reserves the right to make any modification or improvement to its products as deemed necessary without informing customers already in possession of a similar model. This manual forms an integral part of the tool and must accompany the tool if it changes hands.

2. SAFETY

- The Brush cutter and grass trimmer Excelion E DH is a professional tool whose use is reserved exclusively for clearing green spaces (grasses, dense grasses, woody weeds, brambles and small shrubs).
- The PELLENC company accepts no responsibility for any damage caused by improper or unspecified use different from its original intention.
- The PELLENC company accepts no responsibility for any damage caused by the use of non-original parts or accessories.

2.1. GENERAL POWER TOOL SAFETY WARNINGS



Warning

Read all safety warnings, instructions, illustrations and specifications provided with this power tool. Failure to follow all instructions listed below may result in electric shock, fire and/or serious injury.

Save all warnings and instructions for future reference.

The term “power tool” in the warnings refers to your mains-operated (corded) power tool or battery-operated (cordless) power tool.

2.1.1. WORK AREA SAFETY

- Keep work area clean and well lit.** Cluttered or dark areas invite accidents.
- Do not operate power tools in explosive atmospheres, such as in the presence of flammable liquids, gases or dust.** Power tools create sparks, which can ignite dust or fumes.
- Keep children and bystanders away while operating the power tool.** Distractions can cause you to lose control.

2.1.2. ELECTRICAL SAFETY

- Power tool plugs must match the outlet. Never modify the plug in any way. Do not use adapter plugs with earthed (grounded) power tools.** Unmodified plugs and matching outlets will reduce risk of electric shock.
- Avoid body contact with earthed or grounded surfaces, such as pipes, radiators, ranges and refrigerators.** There is an increased risk of electric shock if your body is earthed or grounded.
- Do not operate the machine in rain or wet conditions.** Water entering the machine may increase the risk of electric shock or malfunction that could result in personal injury.
- Do not abuse the cord. Never use the cord for carrying, pulling or unplugging the power tool. Keep cord away from heat, oil, sharp edges, and moving parts.** Damaged or entangled cords increase the risk of electric shock.
- When operating a power tool outdoors, use an extension cord suitable for outdoor use.** Use of a cord suitable for outdoor use reduces the risk of electric shock.
- If operating a power tool in a damp location is unavoidable, use a RESIDUAL CURRENT DEVICE (RCD) protected supply.** Use of an RCD reduces the risk of electric shock.

2.1.3. PERSONAL SAFETY

- Stay alert, watch what you are doing and use common sense when operating a power tool. Do not use a power tool while you are tired or under the influence of drugs, alcohol or medication.** A moment of inattention while operating power tools may result in serious personal injury.
- Use personal protective equipment. Always wear eye protection.** Protective equipment such as a dust mask, non-skid safety shoes, hard hat or hearing protection used for appropriate conditions will reduce personal injuries.

- c. **Prevent unintentional starting.** Ensure the switch is in the off-position before connecting to power source and/or battery pack, picking up or carrying the tool. *Carrying power tools with your finger on the switch or energising power tools that have the switch on invites accidents.*
- d. **Remove any adjusting key or wrench before turning the power tool on.** *A wrench or a key left attached to a rotating part of the power tool may result in personal injury.*
- e. **Do not overreach. Keep proper footing and balance at all times.** *This enables better control of the power tool in unexpected situations.*
- f. **Dress properly. Do not wear loose clothing or jewellery. Keep your hair and clothing away from moving parts.** *Loose clothes, jewellery or long hair can be caught in moving parts.*
- g. **If devices are provided for the connection of dust extraction and collection facilities, ensure these are connected and properly used.** *Use of dust collection can reduce dust-related hazards.*
- h. **Do not let familiarity gained from frequent use of tools allow you to become complacent and ignore tool safety principles.** *A careless action can cause severe injury within a fraction of a second.*

2.1.4. POWER TOOL USE AND CARE

- a. **Do not force the power tool. Use the correct power tool for your application** *The correct power tool will do the job better and safer at the rate for which it was designed.*
- b. **Do not use the power tool if the switch does not turn it on and off.** *Any power tool that cannot be controlled with the switch is dangerous and must be repaired.*
- c. **Disconnect the plug from the power source and/or remove the battery pack, if detachable, from the power tool before making any adjustments, changing accessories, or storing power tools.** *Such preventive safety measures reduce the risk of starting the power tool accidentally.*
- d. **Store idle power tools out of the reach of children and do not allow persons unfamiliar with the power tool or these instructions to operate the power tool.** *Power tools are dangerous in the hands of untrained users.*
- e. **Maintain power tools and accessories. Check for misalignment or binding of moving parts, breakage of parts and any other condition that may affect the power tool's operation. If damaged, have the power tool repaired before use.** *Many accidents are caused by poorly maintained power tools.*
- f. **Keep cutting tools sharp and clean.** *Properly maintained cutting tools with sharp cutting edges are less likely to bind and are easier to control.*
- g. **Use the power tool, accessories and tool bits etc. in accordance with these instructions, taking into account the working conditions and the work to be performed.** *Use of the power tool for operations different from those intended could result in a hazardous situation.*
- h. **Keep handles and grasping surfaces dry, clean and free from oil and grease.** *Slippery handles and grasping surfaces do not allow for safe handling and control of the tool in unexpected situations.*

2.1.5. BATTERY TOOL USE AND CARE

- a. **Recharge only with the charger specified by the manufacturer.** *A charger that is suitable for one type of battery pack may create a risk of fire when used with another battery pack.*
- b. **Use power tools only with specifically designated battery packs.** *Use of any other battery packs may create a risk of injury and fire.*
- c. **When battery pack is not in use, keep it away from other metal objects, like paper clips, coins, keys, nails, screws or other small metal objects, that can make a connection from one terminal to another.** *Shorting the battery terminals together may cause burns or a fire.*
- d. **Under abusive conditions, liquid may be ejected from the battery; avoid contact. If contact accidentally occurs, flush with water. If liquid contacts eyes, additionally seek medical help.** *Liquid ejected from the battery may cause irritation or burns.*
- e. **Do not use a battery pack or tool that is damaged or modified.** *Damaged or modified batteries may exhibit unpredictable behaviour resulting in fire, EXPLOSION or risk of injury.*
- f. **Do not expose a battery pack or tool to fire or excessive temperature.** *Exposure to fire or temperature above 130 °C (265 °F) may cause explosion.*
- g. **Follow all charging instructions and do not charge the battery pack or tool outside the temperature range specified in the instructions.** *Charging improperly or at temperatures outside the specified range may damage the battery and increase the risk of fire.*

2.1.6. SERVICE

- a. **Have your power tool serviced by a qualified repair person using only identical replacement parts.** *This will ensure that the safety of the power tool is maintained.*
- b. **Never service damaged battery packs.** *Service of battery packs should only be performed by the manufacturer or authorized service providers.*

2.2. GRASS TRIMMER, BRUSH CUTTER AND BRUSH SAW SAFETY WARNINGS

1. **Do not use the machine in bad weather conditions, especially when there is a risk of lightning.** *This decreases the risk of being struck by lightning.*
2. **Thoroughly inspect the area for wildlife where the machine is to be used.** *Wildlife may be injured by the machine during operation.*
3. **Thoroughly inspect the area where the machine is to be used and remove all stones, sticks, wires, bones, and other foreign objects.** *Thrown objects can cause personal injury.*
4. **Before using the machine, always visually inspect to see that the cutter or blade and the cutter or blade assembly are not damaged.** *Damaged parts increase the risk of injury.*
5. **Follow instructions for changing accessories.** *Improperly tightened blade securing nuts or bolts may either damage the blade or result in it becoming detached.*
6. **While operating the machine, always wear non-slip and protective footwear. Do not operate the machine when barefoot or wearing open sandals.** *This reduces the chance of injury to the feet from contact with the moving cutter line or blade.*
7. **While operating the machine, always wear long trousers.** *Exposed skin increases the likelihood of injury from thrown objects.*
8. **The rated rotational speed of the blade must be at least equal to the maximum rotational speed marked on the machine.** *Blades running faster than their rated rotational speed can break and fly apart.*
9. **Keep bystanders away while operating the machine.** *Thrown debris can result in serious personal injury.*
10. **Always use two hands when operating the machine.** *Holding the machine with both hands will avoid loss of control.*
11. **Hold the machine by the insulated gripping surfaces only, because the cutting line or blade may contact hidden wiring.** *Cutting line or blades contacting a "live" wire may make exposed metal parts of the machine "live" and could give the operator an electric shock.*
12. **Always keep proper footing and operate the machine only when standing on the ground.** *Slippery or unstable surfaces may cause a loss of balance or control of the machine.*
13. **Do not operate the machine on excessively steep slopes.** *This reduces the risk of loss of control, slipping and falling which may result in personal injury.*
14. **When working on slopes, always be sure of your footing, always work across the face of slopes, never up or down and exercise extreme caution when changing direction.** *This reduces the risk of loss of control, slipping and falling which may result in personal injury.*
15. **Keep all parts of the body away from the cutter, line or blade when the machine is operating. Before you start the machine, make sure the cutter, line or blade is not contacting anything.** *A moment of inattention while operating the machine may result in injury to yourself or others.*
16. **Do not operate the machine above waist height.** *This helps prevent unintended cutter or blade contact and enables better control of the machine in unexpected situations.*
17. **When cutting brush or saplings that are under tension, be alert for spring back.** *When the tension in the wood fibres is released, the brush or sapling may strike the operator and/or throw the machine out of control.*
18. **Use extreme caution when cutting brush and saplings.** *The slender material may catch the blade and be whipped toward you or pull you off balance.*
19. **Maintain control of the machine and do not touch cutters, lines or blades and other hazardous moving parts while they are still in motion.** *This reduces the risk of injury from moving parts.*
20. **Carry the machine with the machine switched off and away from your body.** *Proper handling of the machine will reduce the likelihood of accidental contact with a moving cutter, line or blade.*
21. **Only use replacement cutters, lines, cutting heads and blades specified by the manufacturer.** *Incorrect replacement parts may increase the risk of breakage and injury.*
22. **When transporting or storing the machine, always fit the cover on metal blades.** *Proper handling of the machine will reduce the likelihood of accidental contact with the blade.*

23. **When clearing jammed material or servicing the machine, make sure the switch is off and the battery pack is removed.** *Unexpected starting of the machine while clearing jammed material or servicing may result in serious personal injury.*

2.3. BLADE THRUST CAUSES AND RELATED WARNINGS

Blade thrust is a sudden sideways, forward or backward motion of the machine, which may occur when the blade jams or catches on an object such as a sapling or a tree stump. It can be violent enough to cause the machine and/or operator to be propelled in any direction, and possibly lose control of the machine.

Blade thrust and its related hazards can be avoided by taking proper precautions as given below.

1. **Maintain a firm grip with both hands on the machine and position your arms to resist blade thrust. Position your body to the left side of the machine.** *Blade thrust can increase the risk of injury due to the machine moving unexpectedly. Blade thrust can be controlled by the operator if proper precautions are taken.*
2. **If the blade binds, or when interrupting a cut for any reason, switch the machine off and hold the machine motionless in the material until the blade comes to a complete stop. While the blade is binding, never attempt to remove the machine from the material or pull the machine backward while the blade is in motion, otherwise blade thrust may occur.** *Investigate and take corrective actions to eliminate the cause of blade binding.*
3. **Do not use blunt or damaged blades.** *Blunt or damaged blades increase the risk of jamming or catching on an object, resulting in blade thrust.*
4. **Always maintain good visibility of the material being cut.** *Blade thrust is more likely to occur in areas where it is difficult to see the material being cut.*
5. **If you are approached by another person while operating the machine, switch the machine off.** *There is an increased risk of injury to other persons being struck by the moving blade in the event of blade thrust.*

2.4. USE OF THE DEVICE BY CHILDREN AND PEOPLE WITH REDUCED ABILITIES

This appliance can be used by children aged from 8 years and above and persons with reduced physical, sensory or mental capabilities or lack of experience and knowledge if they have been given supervision or instruction concerning use of the appliance in a safe way and understand the hazards involved. Children shall not play with the appliance. Cleaning and user maintenance shall not be made by children without supervision.

2.5. SAFE OPERATING PRACTICES

Important

READ CAREFULLY BEFORE USE.

KEEP FOR FUTURE REFERENCE

2.5.1. TRAINING

1. Read the instructions carefully. Be familiar with the controls and the correct use of the machine.
2. Never allow children or people unfamiliar with these instructions to use the machine. Local regulations can restrict the age of the operator.
3. Keep in mind that the operator or user is responsible for accidents or hazards occurring to other people or their property.

2.5.2. PREPARATION

1. Before use check the supply and extension cord for signs of damage or aging. If the cord becomes damaged during use, disconnect the cord from the supply immediately. **DO NOT TOUCH THE CORD BEFORE DISCONNECTING THE SUPPLY.** Do not use the machine if the cord is damaged or worn.

2. Before use, always visually inspect the machine for damaged, missing or misplaced guards or shields.
3. Never operate the machine while people, especially children, or pets are nearby.

2.5.3. OPERATION

1. Keep supply and extension cords away from **cutting means**.
2. Wear eye protection and stout shoes at all times while operating the machine.
3. Avoid using the machine in bad weather conditions especially when there is a risk of lightning.
4. Use the machine only in daylight or good artificial light.
5. Never operate the machine with damaged guards or shields or without guards or shields in place.
6. Switch on the motor only when the hands and feet are away from the **cutting means**.
7. Always disconnect the machine from the power supply (i.e. remove the plug from the mains, remove the disabling device or removable battery).
 - whenever the machine is left unattended;
 - before clearing a blockage;
 - before checking, cleaning or working on the machine;
 - after striking a foreign object;
 - whenever the machine starts vibrating abnormally.
8. Take care against injury to feet and hands from the **cutting means**.
9. Always ensure that the ventilation openings are kept clear of debris.

2.5.4. MAINTENANCE AND STORAGE

1. Disconnect the machine from the power supply (i.e. remove the plug from the mains, remove the disabling device or removable battery) before carrying out maintenance or cleaning work.
2. Use only the manufacturer's recommended replacement parts and accessories.
3. Inspect and maintain the machine regularly. Have the machine repaired only by an authorized repairer
4. When not in use, store the machine out of the reach of children.

2.6. SAFETY WARNINGS RELATING TO THE BRUSH CUTTER AND GRASS TRIMMER EXCELION E DH

1. Do not use metal cutting tools.
2. Clear the work zone of all obstacles (glass, stone, metal, waste, and other solid objects) as they can be projected when working with the cutting tool.
3. Never use the Brush cutter and grass trimmer Excelion E DH with only one hand.
4. Always use the machine with the cutting head parallel to the ground. The safety guard no longer provides sufficient protection if the angle of the cutting head is excessive, This can increase the risk of injury from flying debris.
5. Immediately stop the Brush cutter and grass trimmer Excelion E DH in the event of a change in the behaviour of the cutting tool (change in noise, increased vibration). Check that the cutting tool is properly attached and verify its condition (no distortion, sufficiently sharp). Replace any damaged cutting tool as it can explode and cause serious, even fatal injuries.
6. CAUTION: The cutting tool continues rotating for a few seconds after the control trigger has been released. Always keep your hands and feet clear of the rotating cutting tool.
7. **Strimmer wire**
 - Never remove the blade installed in the safety guard as it trims the strimmer wire to the appropriate length.
 - Never use metal wire or any other material instead of the nylon cutting wire. Metal wire is likely to break and be projected, causing serious injuries.
 - Only use nylon strimmer wire recommended by PELLENC with a max. diameter of 3 mm.
8. Put on the harness and carrying strap of the tool.

2.7. MANAGEMENT OF THE RECYCLING AND RECOVERY OF WASTE FROM YOUR TOOL

- a. **When the tool reaches the end of its life, PELLENC keeps the end of life sheet of the equipment at disposal.** The end-of-life sheet provides instructions for safely removing components.

2.8. SAFETY MEASURES ASSOCIATED WITH BATTERY USE

1. If not using the battery unit, store it away from other metal objects such as paper clips, coins, keys, nails, screws or other such small metal items that might form a connection between the two terminals. Creating a short circuit between the battery terminals can result in burns or even a fire.
2. Keep the battery out of the reach of children and place it on a non-combustible support.
3. Do not interfere with its cooling cycle.
4. Do not use or leave the battery near a heat source ($> 60^{\circ}\text{C}$).
5. Do not leave the battery in direct, strong sunlight.
6. Do not expose the battery to microwaves or high pressure.
7. Do not immerse the battery in water.
8. The batteries must be charged in a dry, ventilated room at a temperature between 10°C and 25°C maximum, away from any moisture.
9. If the battery is not used for 10 days, the battery will automatically discharge until it reaches its storage charge rate, and then goes to sleep. Warming up occurs during this phase.¹
10. Over time, the capacity of your battery decreases. When it reaches half of its original battery life operating autonomy, it should be replaced.
11. The battery may lose 1 to 4% of its capacity when exposed to a temperature higher than or equal to 55°C for one week.
12. The charging location must be equipped with a class D fire extinguisher (for metal fire) in good working order.
13. The standards in effect must be complied with when either shipping a complete tool or a battery.
 - Complete tool with battery: product classified UN3481 class 9.
 - Battery alone: product classified UN3480 class 9.
14. Using a battery other than the one supplied by Pellenc S.A.S. is dangerous (risk of serious bodily injury). In this case, Pellenc S.A.S. cannot be held liable.
15. The battery must be protected from any impact and must be positioned and secured appropriately during transportation.
16. In the case of suspicious smoke, place the battery outside the charging area or transportation vehicle as far away as possible from any inflammable material.
17. Never store a battery when its capacity is below 50%. Recharge the battery before storage if the value is below 50%.
18. Under inappropriate conditions, liquid may leak from the batteries; avoid contact. In the event of accidental contact, rinse with water. In the event of contact with eyes, seek professional medical help. The liquid leaking from the batteries can cause irritations or burns.
19. Pellenc power tools must only be used with the battery units designed for this purpose. Use of other battery units can present a risk of injury and fire.
20. Recharge only with the charger specified by the manufacturer. A charger suitable for one type of battery unit may present a risk of fire if used with another type of battery unit.
21. Do not use the battery for any purpose other than that initially envisaged (exclusively for use with Pellenc tools).
22. At the end of its life, the battery must be returned to the authorised distributor from whom it was purchased to be recycled in accordance with waste regulations.
23. Fragile case, contains an electronic circuit board and lithium.

¹Exceptions are the Alpha Lite, M32C, 200E and 400E batteries which discharge directly.

2.9. SAFETY SIGNAGE



Please read the operating instruction manual.
Read the manual carefully and follow the safety precautions.



Wearing safety goggles and a helmet is compulsory.



Wearing gloves is compulsory.



Wearing safety boots is compulsory.



Disconnect the battery before carrying out maintenance.



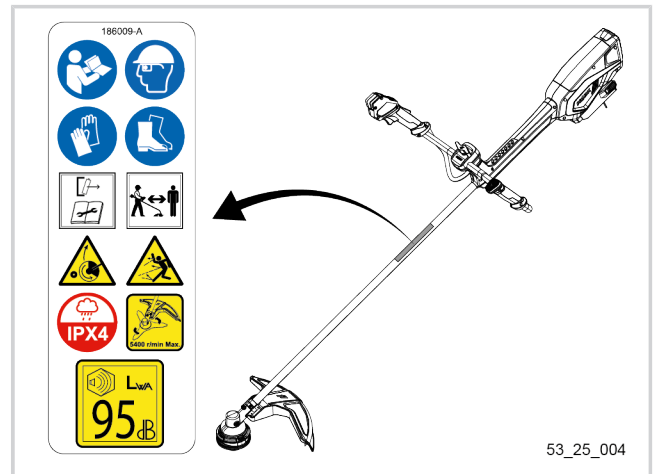
Beware of kickback.



IPX4 protection rating: the product is suitable for all weather conditions and is resistant to heavy water splashes. However, it is not immersion-resistant.



L_{WA} sound power level guaranteed.
Wearing of hearing protection is compulsory.



Safe distance to be observed. Keep bystanders away when the machine is running.

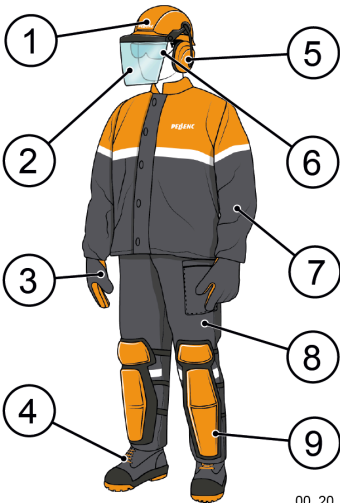


Risk of flying debris.



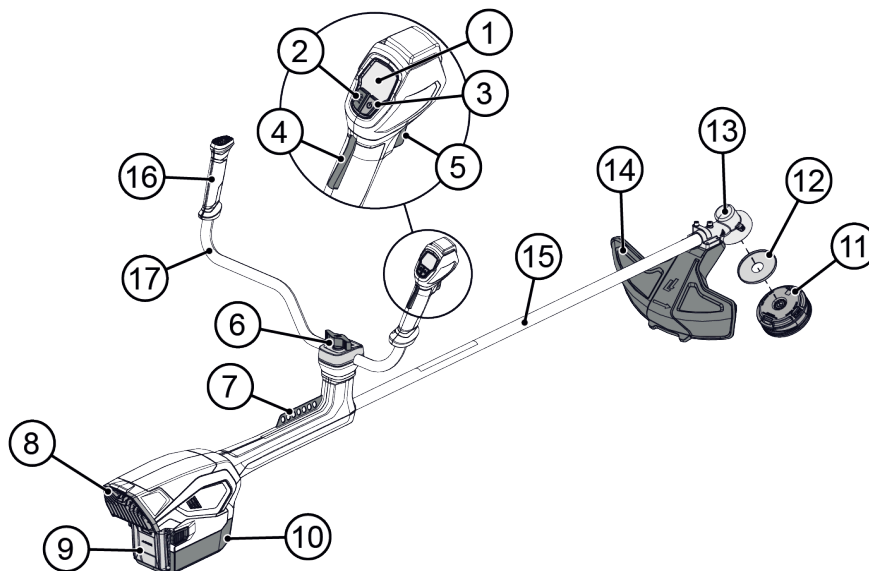
Direction of rotation and maximum rotational speed (5400 rpm).

2.10. PERSONAL PROTECTION EQUIPMENT

 00_20_054		Equipment	Wearing of	Description
	1	Safety helmet	Recommended	Mandatory if there is a risk of falling objects.
	2	Protective visor	Recommended	Risk of projections.
	3	Hard-wearing gloves	Mandatory	Wear hand protection especially when working on the cutting tool.
	4	Robust, non-slip safety shoes	Mandatory	When operating the machine, always wear non-slip safety shoes. Do not operate the machine barefoot or with sandals on.
	5	Hearing protection	Mandatory	Wear approved ear protectors with sufficient noise attenuating effect. Prolonged exposure to noise can cause permanent hearing damage.
	6	Safety goggles	Mandatory	Wear approved eye protection.
	7	Safety jacket or over-sleeves	Recommended	Risk of projections.
	8	Work trousers	Recommended	Always wear clothing that covers the operator's legs when the machine is in operation.
	9	Shin pads	Recommended	Risk of projections.

3. DESCRIPTION AND TECHNICAL FEATURES

3.1. DESCRIPTION OF THE TOOL



53_24_082

- | | |
|---|---|
| 1. HMI screen | 8. Exhaust air grille: hot air discharge grille that cools the motor and the electronic board |
| 2. Speed selector button | 9. Battery |
| 3. ON/OFF button | 10. Adapter cover for the battery |
| 4. Safety throttle: prevents the inadvertent activation of the control trigger; the safety throttle must be activated prior to activating the control trigger | 11. TAP CUT 3 cutting head |
| 5. Control trigger (power switch): used to activate the rotation of the cutting tool at a progressively adjustable speed | 12. Anti-vegetation protection washer |
| 6. Handlebar tightening screw | 13. Planetary gear |
| 7. Carrying plate: allows the user to carry the tool using a harness. | 14. Safety guard for TAP CUT 3 and weed control blades: limits the projections of solid objects (stones, pieces of metal) towards the operator. |
| | 15. Drive shaft |
| | 16. Handle: used to guide the tool |
| | 17. Handlebar |

Note

The cutting heads are available for purchase separately. This operating instructions manual may refer to these cutting heads sold as options. For more information on their use, refer to see 5.5.1. Choice of the right cutting head according to the use, page 33.



Caution

Before any intervention on the tool, bring the machine to a complete stop. To consult the procedure for switching off your tool, refer to 5.3. Stopping the tool, page 32.

3.2. TECHNICAL FEATURES

3.2.1. TOOL FEATURES

	EXCELION E
Model	DH
Power	1 200 W
Tool voltage	43.2 V
Bare weight (+ cutting tool + safety guard)	5.1 (+ 0.360 + 0.420) kg
Weight (with 400 E battery)	8.4 kg
Dimensions (l x w x h)	1835 x 665 x 590 mm
Rotation speeds	5 400 rpm
Tangential speed	130 m/s
Battery life with 400E battery	30 minutes to 2 hours
Compatible batteries	400 E (ref. 57334)
Compatible chargers	CB 5060HV (ref. 57335)

3.2.2. FEATURES OF THE CUTTING HEAD PROVIDED

Head type	Semi-automatic wired head
Model	Tap Cut 3
Ø wire cutter	460 mm
Ø wire	2.0 mm (as standard)

3.2.3. FEATURES OF THE OPTIONAL BLADE

Blade type	Trident
Ø blade	255 mm
Thickness	2.3 mm

3.2.4. VIBRATION AND NOISE EMISSION VALUES

The determination of noise levels and vibration rates is based on operating conditions at maximum rated speed according to a standardised test method. It can be used to compare two machines.

Sound pressure values

Maximum sound pressure level at the user's position (Uncertainty K_{pa} : 3 dB (A))	$L_{pa} = 79.9 \text{ dB (A)}$
---	--------------------------------

Sound power values

Measured sound power level L_{WA} (uncertainty K_{WA} : 0.9 dB(A))	94.4 dB(A)
Guaranteed sound power level $L_{WA,g}$	95 dB(A)

The measured sound power level and the guaranteed sound power level were measured on a grass trimmer fitted with a TAP CUT 3 with a Ø 2.0 mm wire.

The measured sound power level and the guaranteed sound power level were measured according to a procedure in accordance with Directive 2000/14/EC Annex V.

Vibration values measured at maximum rated speed

Higher value for left and right handles a_h (uncertainty K_{WA} : 1,5 m/s ²)	3,15 m/s ²
--	-----------------------

The total declared values for vibration and noise emissions can be used for a preliminary exposure assessment.

Caution

Vibrations during actual working use of the machine may differ from the total declared value, depending on the way the machine is used

It is necessary to identify safety measures to protect the operator, based on an estimate of exposure under actual operating conditions (taking into account all parts of the operating cycle, such as the time the machine is switched off and the time it is idling, in addition to the working time).

4. START-UP



Caution

Before any intervention on the tool, bring the machine to a complete stop. To consult the procedure for switching off your tool, refer to 5.3. Stopping the tool, page 32.

4.1. PACKAGE CONTENTS

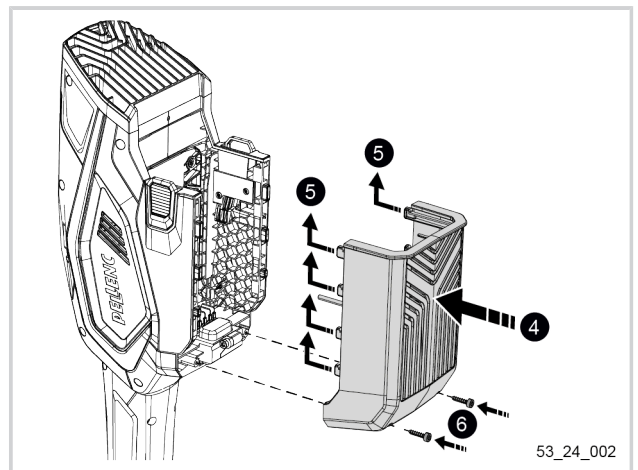
Check that the Brush cutter and grass trimmer Excelion E DH is delivered with:

- 1 TAP CUT 3 cutting head
- 1 safety guard
- 1 harness
- 1 adapter cover for the 400E battery
- 1 operating instruction manual

4.2. ASSEMBLY/DISASSEMBLY THE BATTERY ADAPTER COVERS

4.2.1. ASSEMBLY OF THE ADAPTER COVER FOR THE 400 E BATTERY

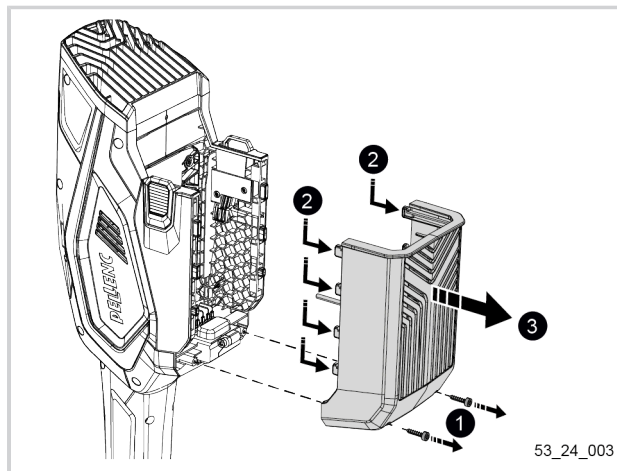
1. Position the adapter cover for the 400 E battery.
2. Slide the 400 E battery adapter cover upwards to engage the hooks.
3. Tighten the two Torx screws to secure the 400 E battery adapter cover.



53_24_002

4.2.2. DISASSEMBLY OF THE ADAPTER COVER FOR THE 400 E BATTERY

1. Loosen and remove the two Torx screws.
2. Slide the 400 E battery adapter cover downwards to release the hooks.
3. Remove the 400 E battery adapter cover.



4.3. FITTING / DISMOUNTING OF THE HANDLE ON THE BRUSH CUTTER AND GRASS TRIMMER



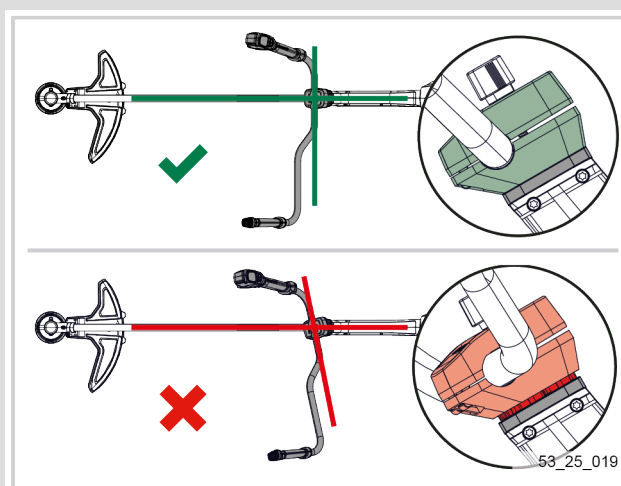
Caution

Before any intervention on the tool, stop the machine completely and disconnect the battery. To consult the procedure for switching off your tool, refer to 5.3. Stopping the tool, page 32.

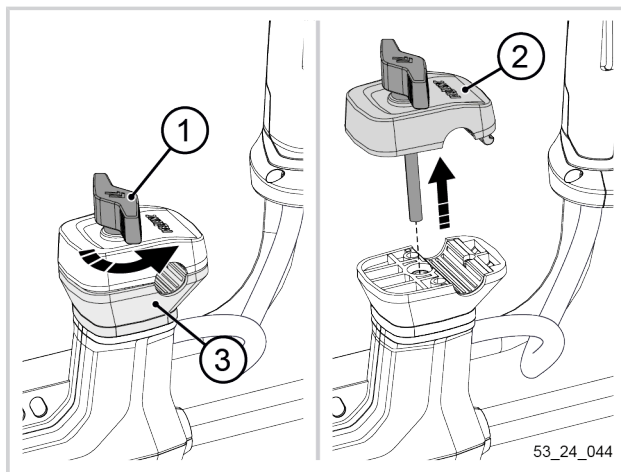
4.3.1. MOUNTING THE HANDLEBAR ON THE TOOL

Important

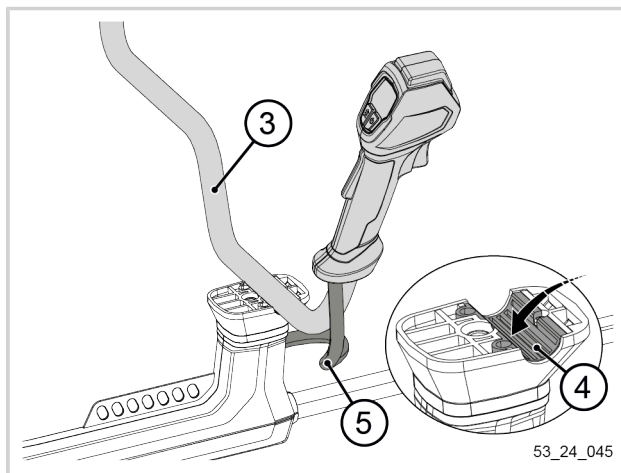
The parts must fit together perfectly. The handlebar should be perpendicular to the transmission tube.



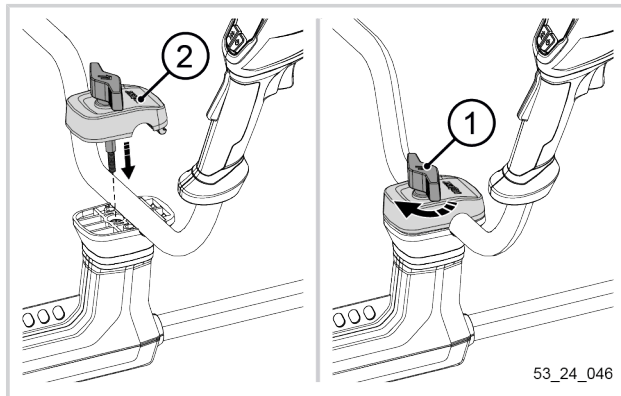
1. Carefully remove the tool from its packing box.
2. Lay the tool on a flat, stable and clean surface.
As the knob (1) is already installed on the handlebar support when removed from the box, you must remove it in order to position the handlebar.
3. Hold the lower part of the support (3) as it is held in place by the knob and is fixed on a spring.
4. Unscrew the knob (1) until the mounting cover (2) is released.
5. Remove the mounting cover (2) with the rotary knob (1).



6. Position the handlebar (3) in the retaining groove (4), taking care not to twist the cable (5).
The joystick should be on the right of the tool.

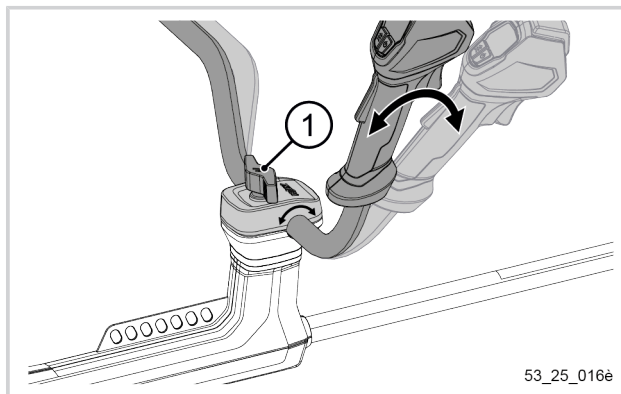


7. Position the mounting cover (2).
8. Screw the knob (1) until the guide handlebar position is locked.



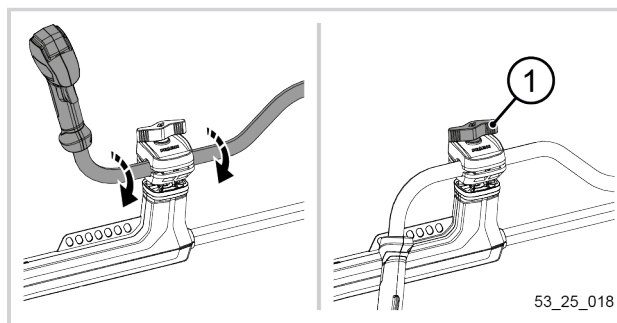
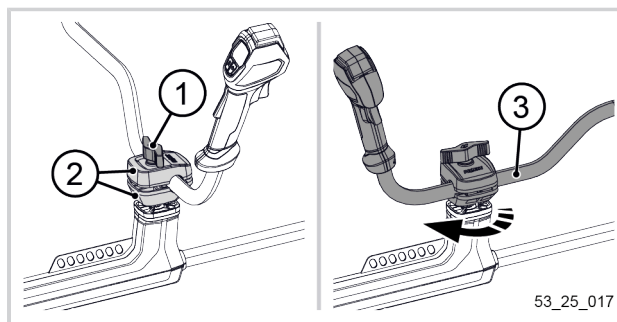
4.3.2. HANDLEBAR INCLINATION ADJUSTMENT

1. Loosen the knob (1) until the handlebar can be pivoted.
2. Pivot the handlebars to the desired position.
3. Tighten the knob (1) until the handlebar position is locked.



4.3.3. PUTTING THE HANDLEBAR INTO STORAGE POSITION

1. Loosen the knob (1) until the handlebar mounting supports (2) are released.
2. Pivot the handlebar mounting supports 90° with the handlebar (3), taking care not to twist the cable.
3. Pivot the handlebars downwards to save space.
4. Tighten the knob (1) until the handlebar mounting supports and handlebar inclination are locked.



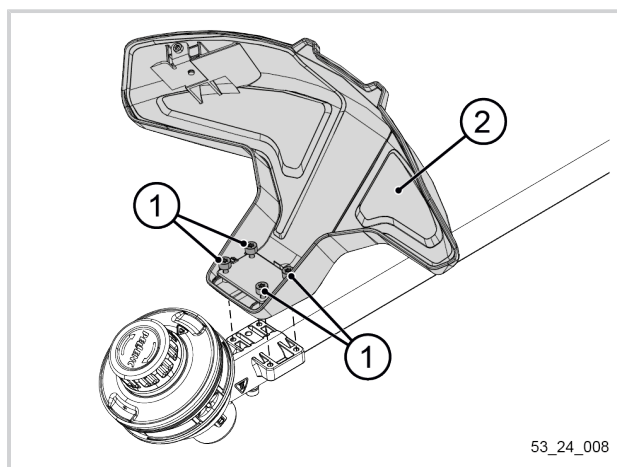
4.4. ASSEMBLY/DISASSEMBLY OF THE SAFETY GUARD

Important

The safety guard supplied as standard with your tool is mandatory.

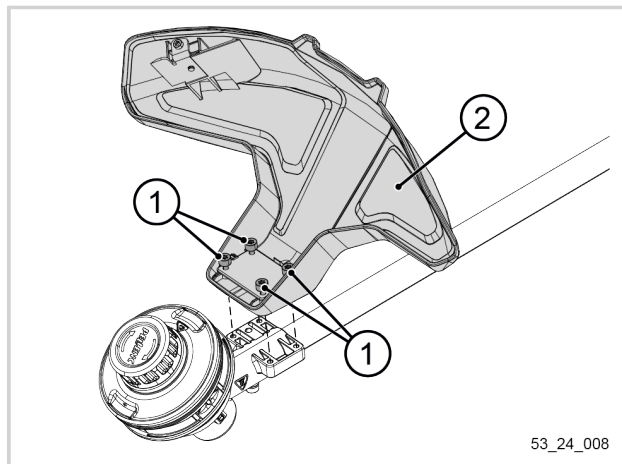
4.4.1. FITTING THE STANDARD SAFETY GUARD

1. Position the safety guard (2) so that the screw markings coincide.
2. Tighten the 4 screws (1)



4.4.2. DISMOUNTING THE STANDARD SAFETY GUARD

1. Unscrew the 4 screws (1) that lock the position of the safety casing (2).
2. Remove the safety casing (2).



4.5. FITTING AND DISMOUNTING OF THE TAP CUT 3

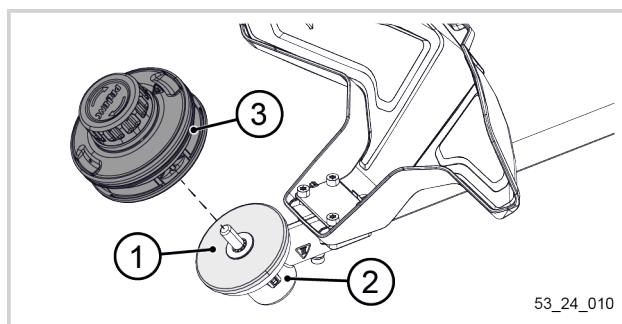


Caution

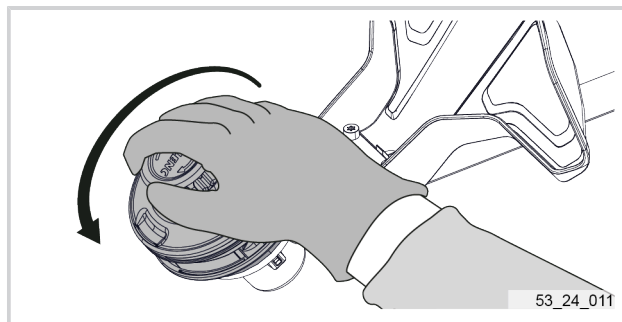
Always disconnect the battery before performing maintenance on the tool.

4.5.1. FITTING THE TAP CUT 3 ONTO THE TOOL

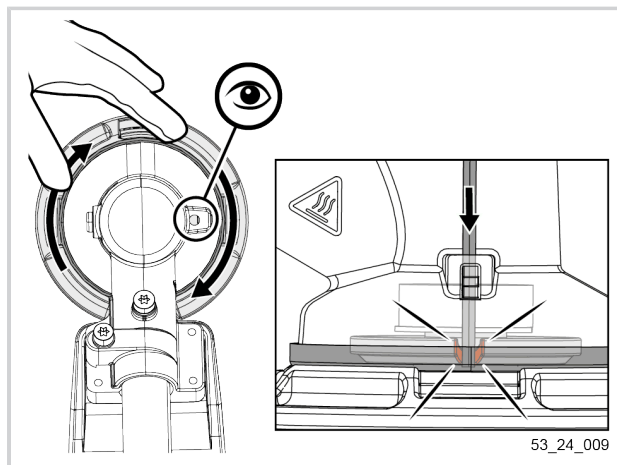
1. Check that the anti-vegetation protection washer (1) is present on the angle gear (2).
2. Fit the TAP CUT (3) on the angle gear (2).



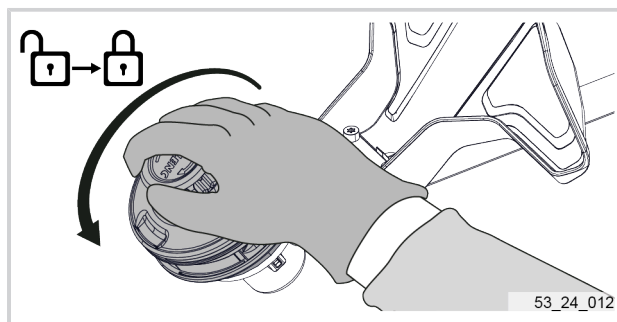
3. Screw the head counterclockwise until in contact with the angle gear.



4. Insert the Torx 25 key into the hole on the angle gear.
5. If necessary, turn the head slightly so that the Torx 25 wrench also fits into the corresponding hole on the cutting head this time.
This action will allow the position of the motor shaft and the support washer to be locked.



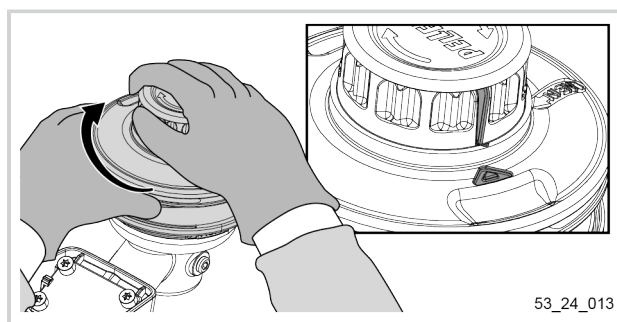
6. Tighten the head counterclockwise to lock the position.



4.5.2. FITTING A STRIMMER WIRE

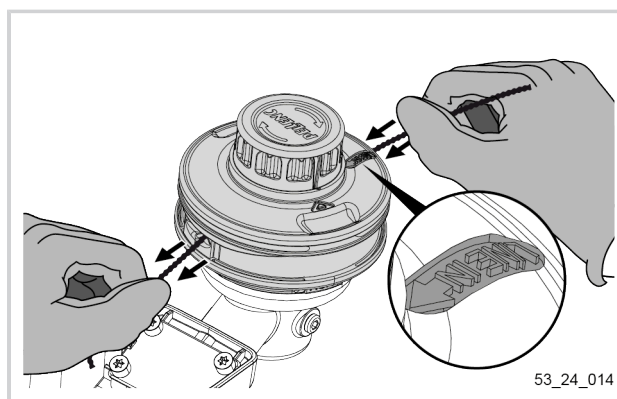
The TAP CUT 3 wire refill system that allows it to be refilled with trimmer wire without having to open the head.

1. Turn the central part so as to align the arrows on the outer part with the lines on the central part.
2. Cut a length of trimmer wire.
3. Identify the direction of insertion of the trimmer wire using the "LINE IN ►" marker.
4. Insert the trimmer wire into the marker eyelet and feed the wire through the TAP CUT.



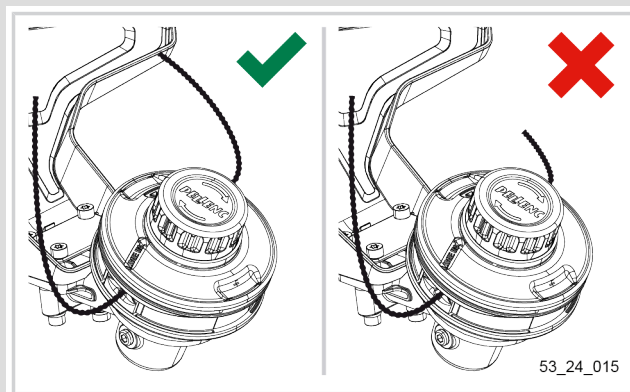
Note

To make it easier to insert the trimmer wire through the eyelets, use both hands to slacken the trimmer wire. This will make the trimmer wire stiffer and straighter.



Note

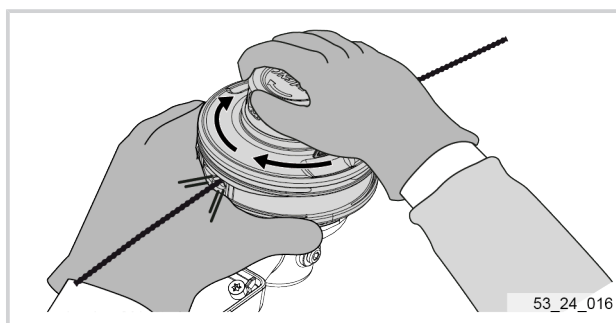
The trimmer wire should be the same length on both sides of the cutting head.



5. Screw in the middle part so that the wire enters the cutting head and becomes less and less apparent.

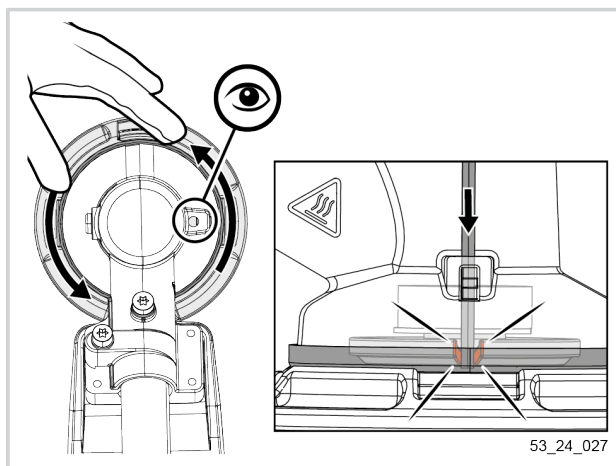
Note

The length of the trimmer wire must be sufficient for the blade on the safety guard to cut it.

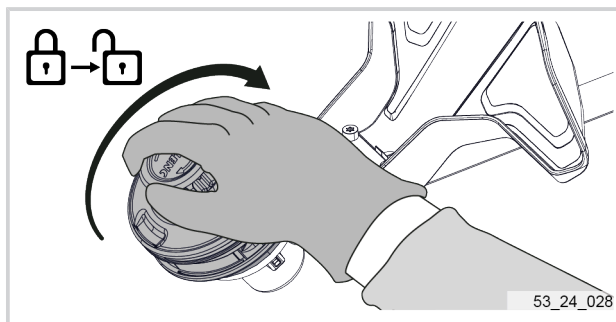


4.5.3. DISMOUNTING THE TAP CUT 3 FROM THE TOOL

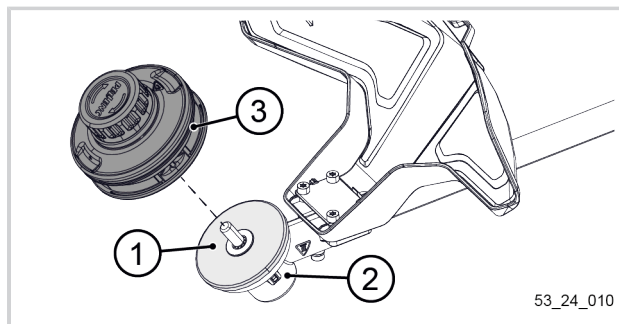
1. Insert the Torx 25 key into the hole on the angle gear.
2. If necessary, turn the head slightly so that the Torx 25 key also fits into the corresponding hole on the cutting head.
This action will allow the position of the motor shaft and the support washer to be unlocked.



3. Turn the head clockwise to unlock the position.
4. Unscrew the head.



5. Remove the TAP CUT (3) from the angle gear (2).
6. Take care not to lose the anti-vegetation protection washer (1).

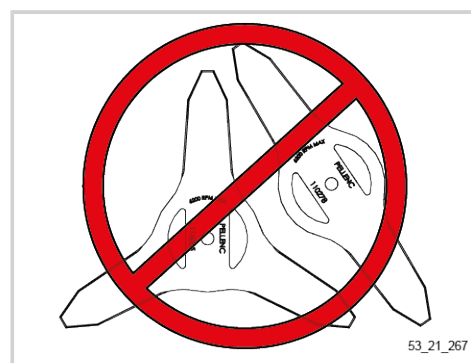


4.6. FITTING/DISMOUNTING THE TRIDENT BLADE ON THE TOOL

Important

It is prohibited to mount Excelion 2000 brush cutter blades on the Excelion E brush cutter.

See part 9.2. Optional accessories, page 44 for the description and part numbers of compatible accessories.



Important

Do not confuse the protective bowl of the trident blade with that of the chopping blade.

The protective bowl of the chopping blade must not be used to mount the trident blade on the tool.

The twin-blade cannot be fitted on the Brush cutter and grass trimmer Excelion E DH.



Caution

Before any intervention on the tool, stop the machine completely and disconnect the battery. To consult the procedure for switching off your tool, refer to 5.3. Stopping the tool, page 32.

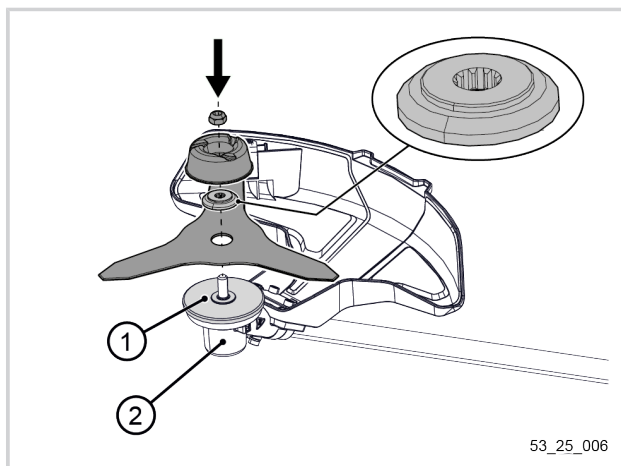


Caution

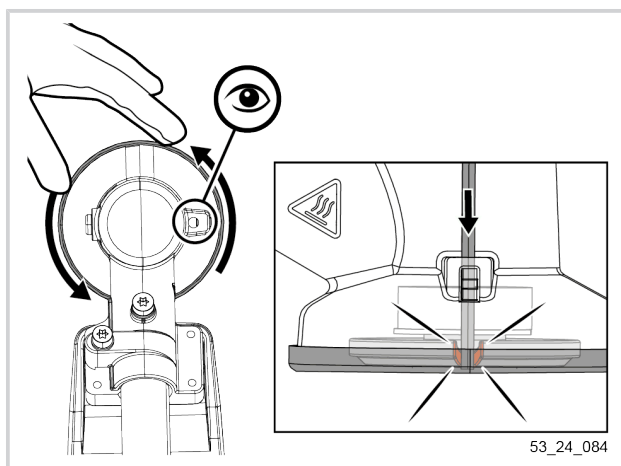
Wear safety gloves. Handling of sharp elements.

4.6.1. FITTING THE TRIDENT BLADE ON THE TOOL

1. Check that the anti-vegetation protection washer (1) is present on the angle gear (2).
2. Take the trident out of its packaging.
3. Place the following parts in turn on the angle gear (2):
 - the trident,
 - the blade locking washer (pay attention to the direction of insertion),
 - the protective bowl
 - the bowl retaining nut.

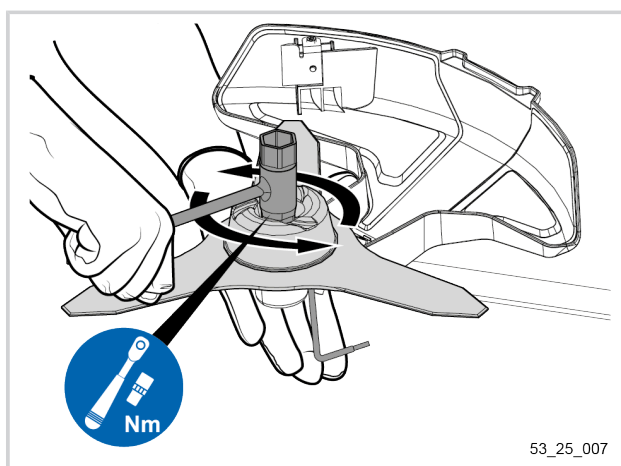


4. Insert the Torx 25 key into the hole on the angle gear.
5. If necessary, turn the head slightly so that the Torx 25 wrench also fits into the corresponding hole on the cutting head.
This action will allow the position of the motor shaft and the support washer to be locked.

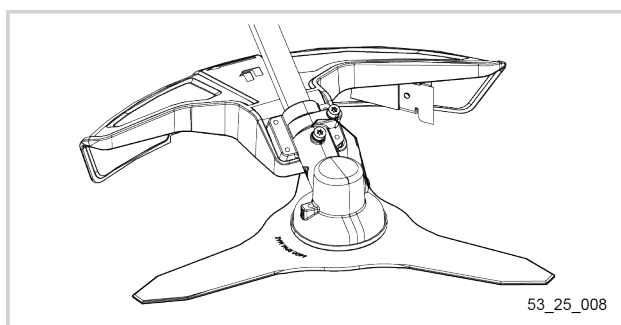


6. Using the special wrench supplied with your tool, tighten the nut anti-clockwise while holding the protective bowl.

Tightening torque: 35 N.m



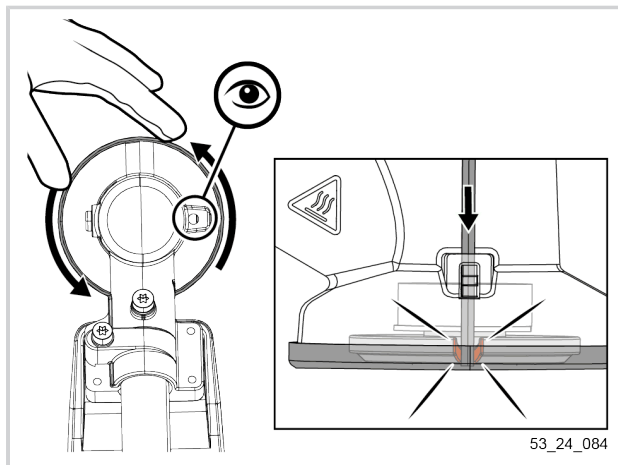
The blade is now fitted on your tool and is ready for use.



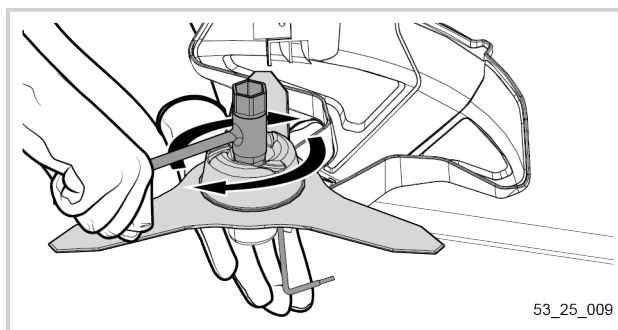
4.6.2. DISMOUNTING THE TRIDENT

1. Insert the Torx 25 key into the hole on the angle gear.
2. If necessary, turn the head slightly so that the Torx 25 wrench also fits into the corresponding hole on the cutting head.

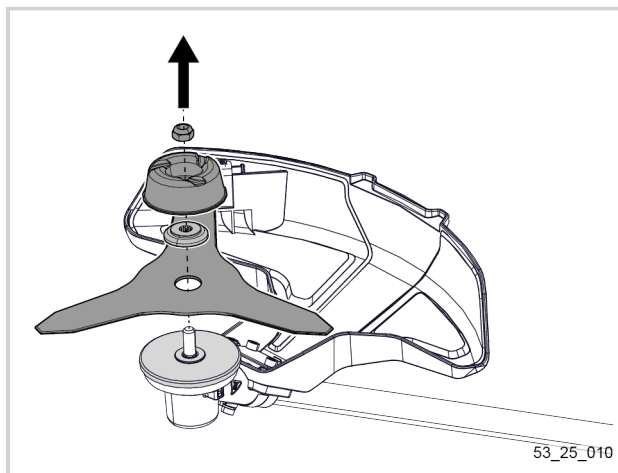
This action will allow the position of the motor shaft and the support washer to be locked.



3. Using the special wrench supplied with your tool, unscrew the nut clockwise while holding the protective bowl.



4. Remove:
 - the trident,
 - the blade locking washer,
 - the protective bowl,
 - the bowl retaining nut.



4.7. CONNECTING THE E BATTERIES TO THE TOOL

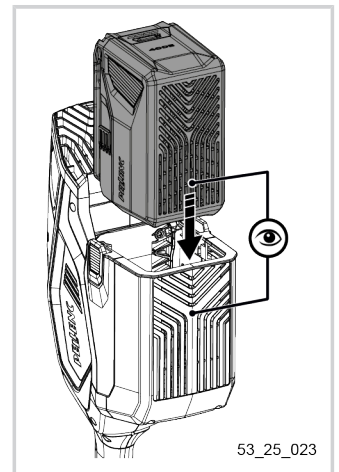
Important

- Always check the remaining battery life before use. If necessary, recharge the battery using the charger.
- Observe the recommended ambient temperature range for the charging system while charging the battery. It is recommended to charge the battery at a temperature between 5°C (41°F) and +45°C (113°F).
- When charging, always follow the battery charging instructions described in the battery and charger instruction manuals.
- To prolong the life of the connectors, they should be protected when disconnected. It is therefore important to avoid putting them in contact with abrasive or dirty surfaces, or subjecting them to significant impacts (falls).
- For more information on PELLENC batteries, see the battery operating instruction manuals.

Important

Check that there are no foreign bodies in the connection area between the tool and the battery.

1. Check that the battery adapter cover is installed on the tool.
If not:
 - See 4.2.1. Assembly of the adapter cover for the 400 E battery, page 17 to install a 400E battery.
2. Locate the battery's ventilation grille and the tool's ventilation grille.
3. Position the battery so that the two grilles coincide.

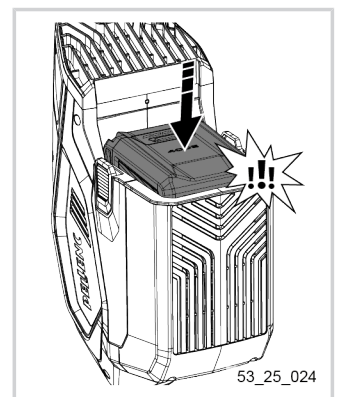


4. Install the battery until the locking clips snap into place.



Warning

The lock prevents unintentional disconnection. Do not start the tool without checking that the clip is locked.



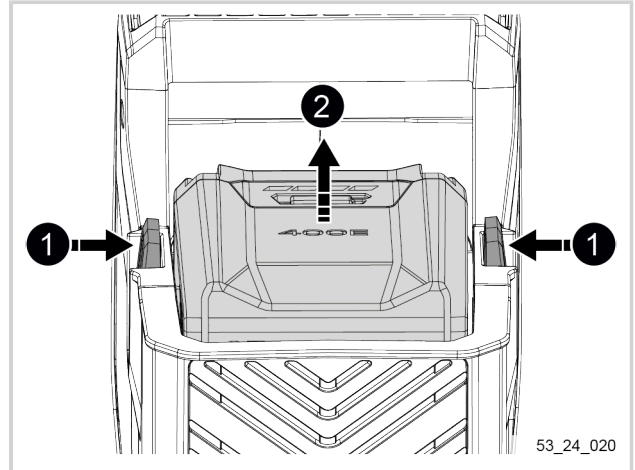
4.8. DISCONNECTING THE E BATTERY FROM THE TOOL

Important

To prolong the life of the connectors, they should be protected when disconnected. It is therefore important to avoid putting them in contact with abrasive or dirty surfaces, or subjecting them to significant impacts (falls).

For more information on PELENC batteries, see the battery operating instruction manuals.

1. Press and hold open the two battery locking clips.
2. Remove the battery.



4.9. ADJUSTING THE WORKING POSITION

Before any use:

- The working position must be adjusted according to the size of the operator.
- It should allow easy use requiring little effort.
- The user should not work with arms stretched or completely bent.
- The cutting head should be close to the ground.

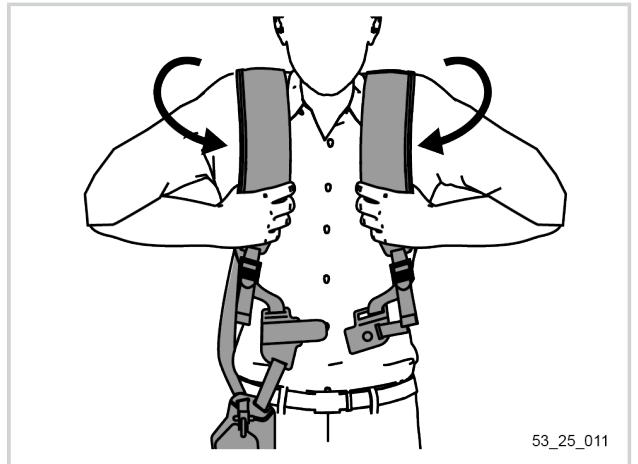
4.9.1. INSTALLING AND ADJUSTING THE HARNESS

Important

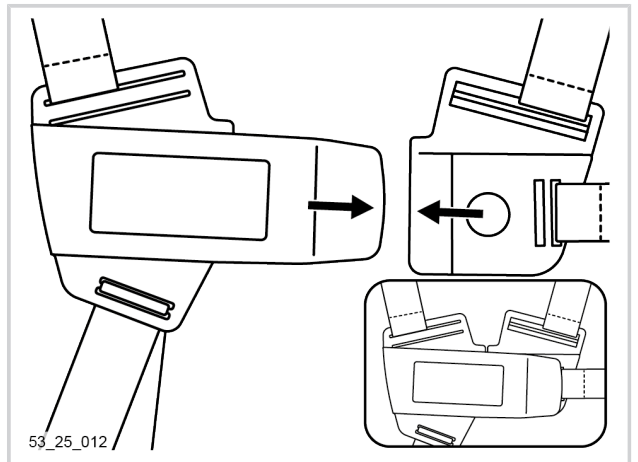
Take the time to properly adjust your harness and machine. This will guarantee your ease of use and prevent any discomfort.

The harness adjustment steps below allow the user to find their own comfort point. This is why the harness adjustment is personal and specific to each user of the tool.

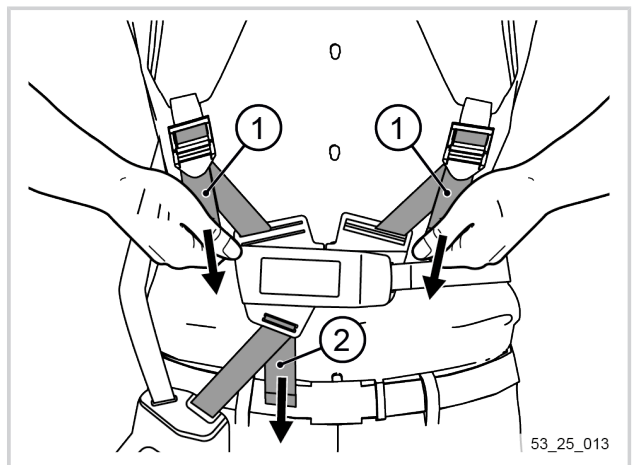
1. Slip the harness over your back.
The adjustment straps must be loose so as not to inhibit the user in his adjustment.



2. Close the harness at stomach level with the plastic buckle.



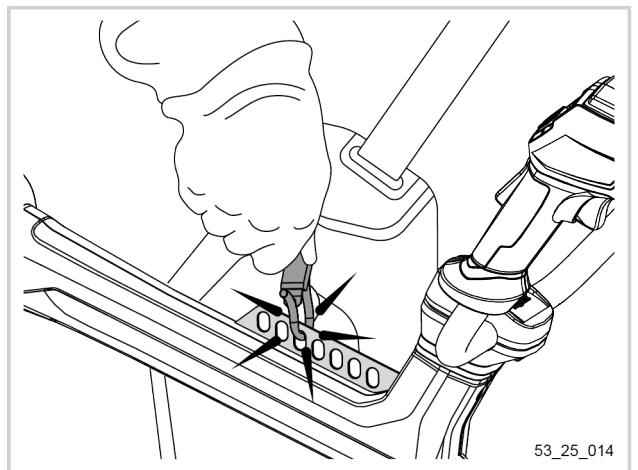
3. Adjust the height of the plastic buckle by pulling on the straps (1).
4. Adjust the position of the coupling plate by pulling on the straps (2).



5. Attach the hook on the harness plate onto one of the 7 attachment positions provided on the tool.
Use the attachment point that allows you to obtain the most comfortable adjustment (weight distribution between the front and the rear).

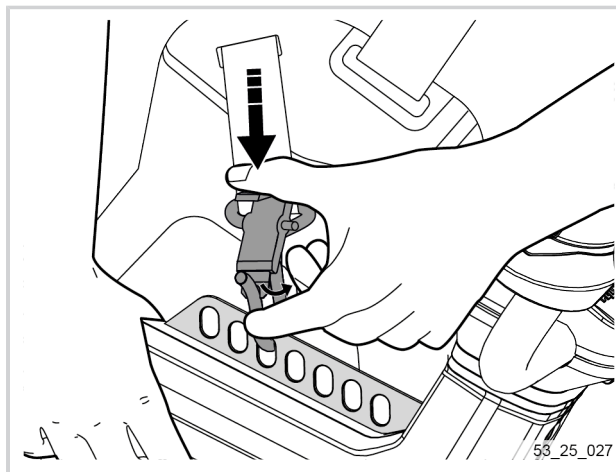
Note

The balancing of the machine depends on the size of the user. The taller the operator, the more the hook is located towards the rear of the carrier plate.

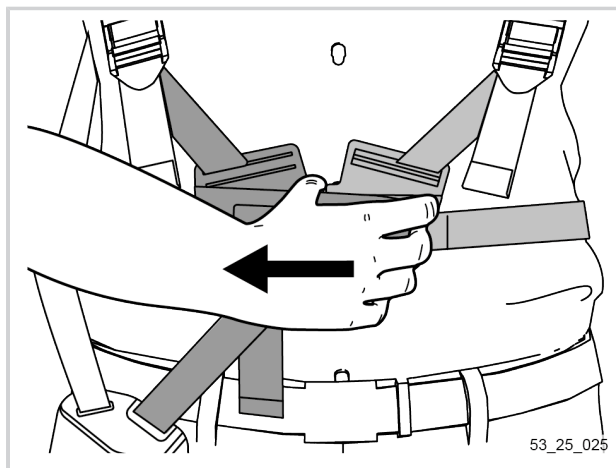


4.9.2. REMOVING THE HARNESS

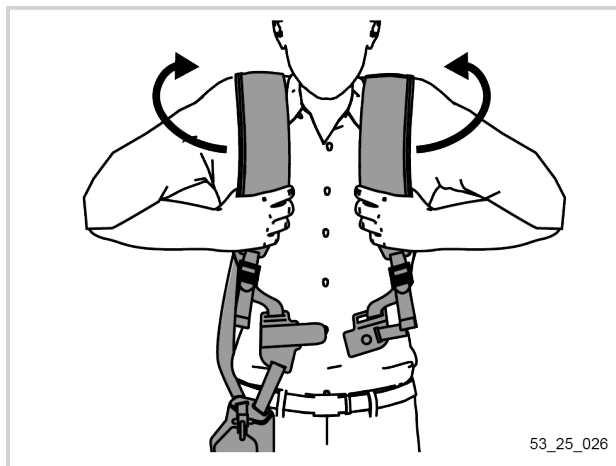
1. Press the hook with your thumb and detach the tool.



2. Grasp the pull tab on the plastic buckle and pull firmly to release the harness.



3. Remove the harness.



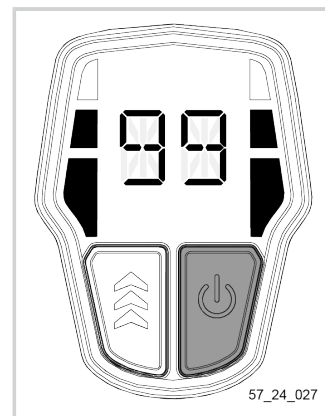
5. USE

Note

- Observe the ambient temperature range for storing the battery and its charger. It is recommended to use the tool at a temperature between **-5°C (23°F) and +35°C (95°F)**.
- Observe the recommended ambient temperature range for the charging system while charging the battery. It is recommended to charge the battery at a temperature between 5°C (41°F) and +45°C (113°F).
- When charging, always follow the battery charging instructions described in the battery and charger instruction manuals.

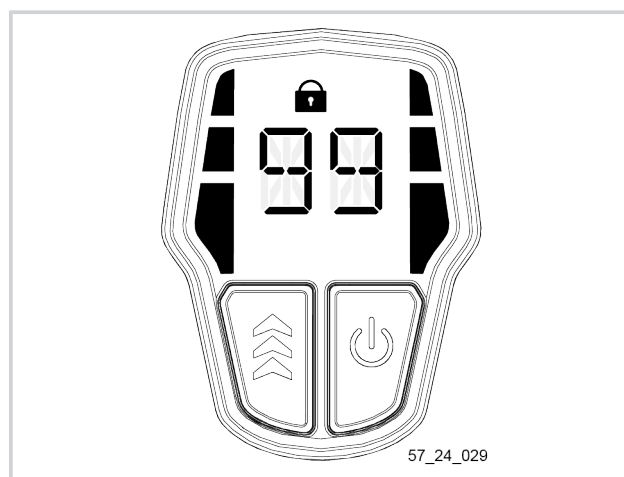
5.1. SWITCHING ON THE TOOL

1. Connect the battery. See 4.7. Connecting the E batteries to the tool, page 27.
2. Switch on the tool by holding down the on/off button for over a second. The HMI comes on.



5.2. UNLOCKING AND STARTING THE TOOL

On start-up, the tool is locked-out (a padlock appears on the HMI screen). This is to prevent accidental start-up.

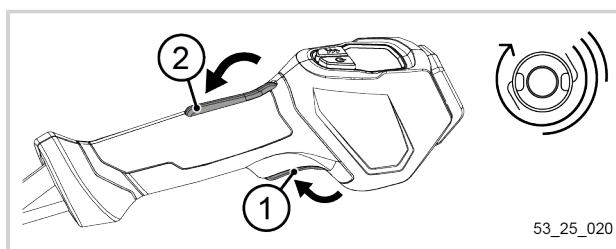
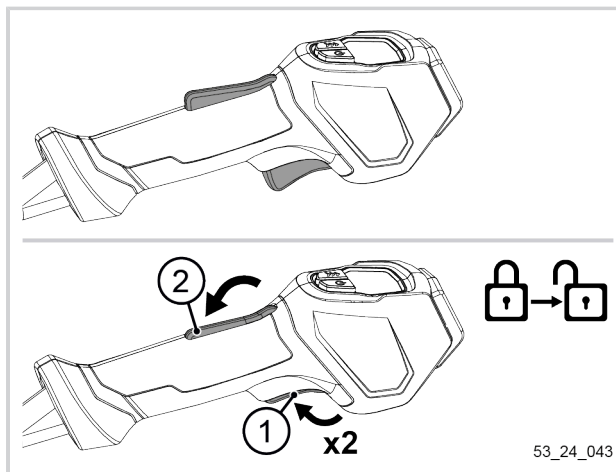


1. Make sure to release the 2 triggers.
2. If this is not the case, release the triggers and restart the tool.
3. Hold the safety trigger (2) and double-click the actuation trigger (1) to unlock the tool.

Important

When the tool is unlocked, the user has 5 seconds to perform an action. If the user does not take any action within 5 seconds, the tool will lock again.

4. Press the operating trigger (1) again while holding the safety trigger (2) to start the tool.



5.3. STOPPING THE TOOL

1. Release the triggers to stop the cutting.
2. Switch off the tool by holding down the on/off button for over a second.
3. If necessary, disconnect the battery. See 4.8. Disconnecting the E battery from the tool, page 28.



5.4. SELECTING WORKING SPEED

Your tool is equipped with a speed change system. This system allows you to optimise and vary the cutting power using the selector (2) on the handle.

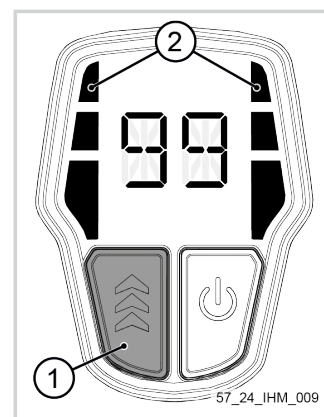
When the tool is powered up, the speed LEDs in the HMI (3) indicate the selected speed.

Note

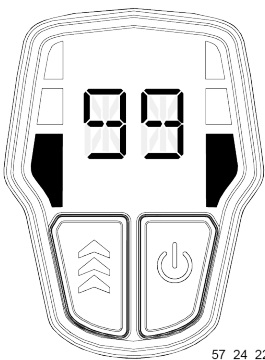
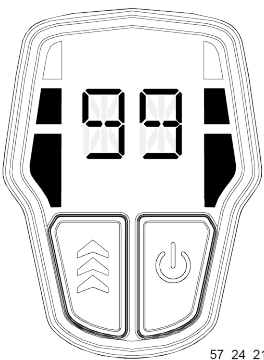
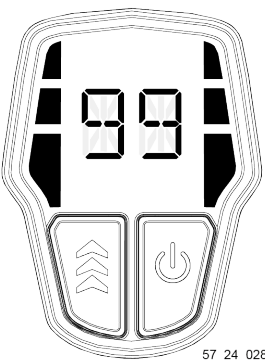
- The tool starts at speed 2 (intermediate speed).
- When changing speed it executes a 2→3→1→2 speeds cycle.
- As the tool heats up, it automatically reduces speed.

To change speed:

1. Press the speed and mode selection button (1) briefly.
The speed LEDs (2) on the HMI increment.
2. Repeat the operation until the desired speed is reached.



Description of speeds:

Selected speed	1	2	3
LED status	 57_24_22	 57_24_21	 57_24_028
Cutting speed (rpm)	3 700	4 700	5 400
Battery life with the 400 E battery (mins)	120	60	30

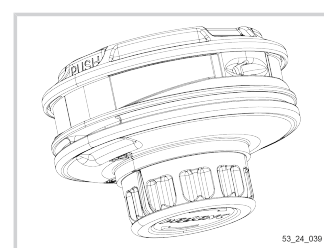
5.5. TIPS FOR USE AND WORKING TECHNIQUES

5.5.1. CHOICE OF THE RIGHT CUTTING HEAD ACCORDING TO THE USE

Whether you want to clean or beautify a green space, remove tall grass, wild shoots, thickets or bushes cluttering up a path, for each use of your Brush cutter and grass trimmer Excelion E DH, there is a PELLENC cutting head perfectly adapted for the job. It is therefore important to choose the right cutting head according to the intended job.

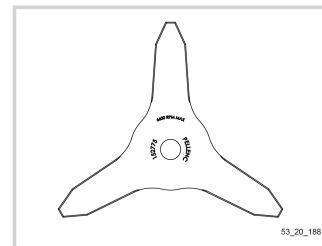
5.5.1.1. TAP CUT 3 HEAD

- It is ideal for mowing and edge trimming.
- It is mainly used in cases where the wear of the trimmer wire is significant (edge of wall, along fences, etc.).



5.5.1.2. WEEDING BLADE

- Ideal for dense grass and brush.
- It is mainly used in cases where the wear of the trimmer wire is significant (edge of wall, along fences, etc.).



5.5.2. ADVICE FOR OPTIMIZING THE BATTERY

In order to optimize the autonomy of your PELLENC battery as much as possible, the rotational speed of the cutting tool used must be adapted to the type of mowing/trimming work to be carried out.

This is because the higher the rotational speed of the cutting tool, the greater the energy consumption. Therefore the progressive nature of the control trigger must be used to adjust the rotational speed of the cutting tool.

Type of vegetation or work	Recommended cutting tool	Recommended tool speed
Borders / Lawn	TAP CUT 3 + Strimmer wire Ø 2.0 mm	V1
Edges	TAP CUT 3 + Strimmer wire Ø 2.0 mm	V1
Lawn	TAP CUT 3 + Strimmer wire Ø 2.0 mm	V1
Grass	TAP CUT 3 + Strimmer wire Ø 2.0 mm	V2
Tall, dense grass	TAP CUT 3 + Strimmer wire Ø 2.0 mm	S3
Tall, dense scrub brush	Trident	S3

5.5.3. TIPS ON USE AND MOWING TECHNIQUES

1. Before starting mowing/trimming, examine the surface to be cleared: nature of the surface, area, relief, presence of obstacles, etc.
2. Note the wind direction. The latter may facilitate the removal of clippings and make the task of the user easier.

Important

Always keep a minimum distance of 50 mm between the cutting head and the obstacle in order to avoid any risk of damage to the tool and the "strands" (of trimmer wire).

5.5.3.1. SIMPLE MOWING

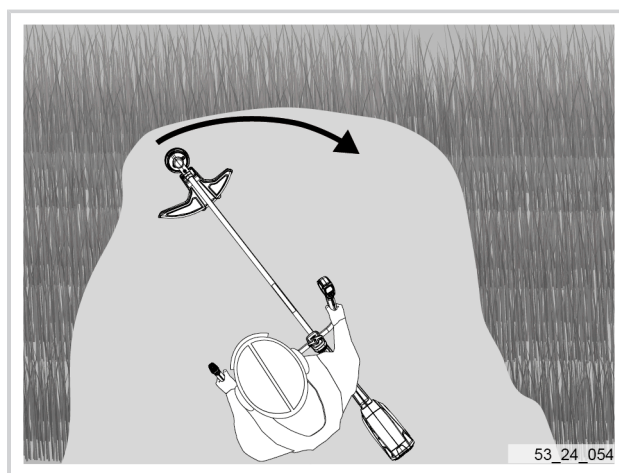
Define a strip that covers the width of the work area.

Movement to be performed

- Move the tool in semi-circles from left to right while gradually advancing.
- Keep the cutting head parallel to the ground.
- Do not put the cutting head in contact with the ground.

Direction of progression

- The operator should always walk forward.



5.5.3.2. TALL GRASS MOWING

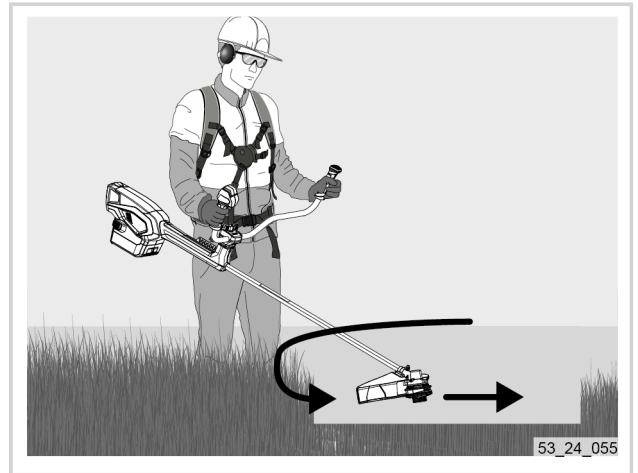
Define a strip that covers the width of the work area.

Movement to be performed

- To mow tall, dense grass, mow the upper part first, then the lower part.
- The mowing movement is from right to left while left to right is the return movement.
- Mowing in one direction only helps with the disposal of cut grass.

Direction of progression

- The operator should always walk forward.

**5.5.3.3. MOWING ON SLOPES****Important**

Before starting to mow on a slope, make sure you are stable on the ground.

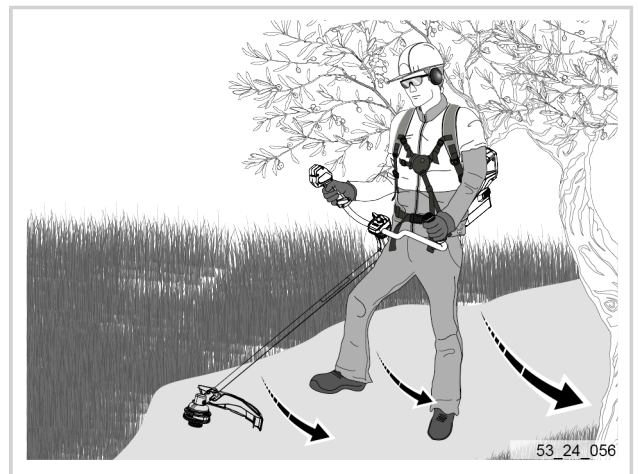
1. Position yourself at the base of the slope.
2. Define a strip parallel to the slope that spans the width of the work area.

Movement to be performed

- Work with the tool from higher to lower ground on slopes.
- The cut grass will fall towards the downside.
- This will prevent the cutting head from rotating in grass that has already been cut.
- Do not put the cutting head in contact with the ground.

Direction of progression

- The operator must always walk forward, following the strip defined at the start of the work.
- When said strip is finished, the user must retrace his steps and start a new strip slightly higher than the one which has just been completed.



5.5.3.4. MOWING ALONG WALLS, FENCES, AROUND TREES AND FLOWER BEDS

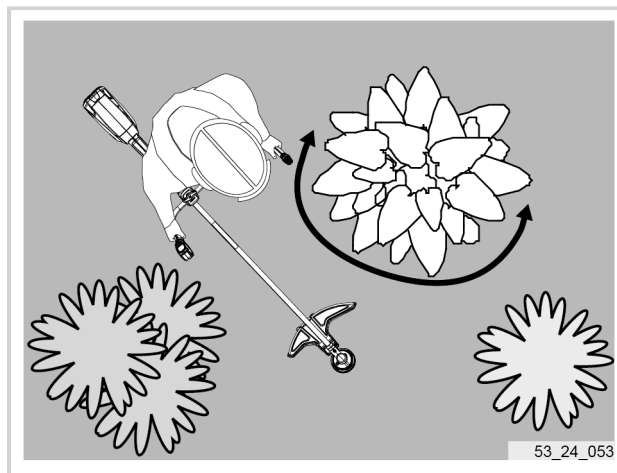
- Protect bark and the edge of flower beds by using the safety guard as a shield between the surface area to be cleared and the vegetation to be protected.

Movement to be performed

- Move the tool in semi-circle arcs from left to right.
- Keep the cutting head parallel to the ground.
- Do not allow the cutting head to touch the ground.

Direction of progression

- The operator should always walk forward.



6. SERVICE

6.1. MAINTENANCE ADVICE



Caution

Always disconnect the tool battery before starting tool maintenance.

- Use products recommended by PELLENC.
- In the event of any problems, consult an authorised PELLENC distributor.

6.2. MAINTENANCE TABLE

Maintenance schedule

Operations	Frequency of operations				
	Before each use and every 2 hours	After use	Every month	Every year	If necessary
Visually check the general condition of the tool. See 6.3.2. Visual check of the general condition of the tool, page 38.	X				
Check the operation of the operating trigger. See 6.3.3. Checking the triggers, page 38.	X				
Clean the tool. See 6.4. Cleaning, page 38.		X			
Grease the angle gear. See 6.5.1. Angle gear lubrication, page 40.			X		
Grease the motor reducer. See 6.5.2. Greasing of the motor reducer, page 40.			X		
Have the tool inspected by an authorised distributor. PELLENC. See 6.3.1. Annual overhaul, page 37.				X	X
Check the battery.	Refer to the battery operating instruction manual.				

6.3. CHECK

6.3.1. ANNUAL OVERHAUL

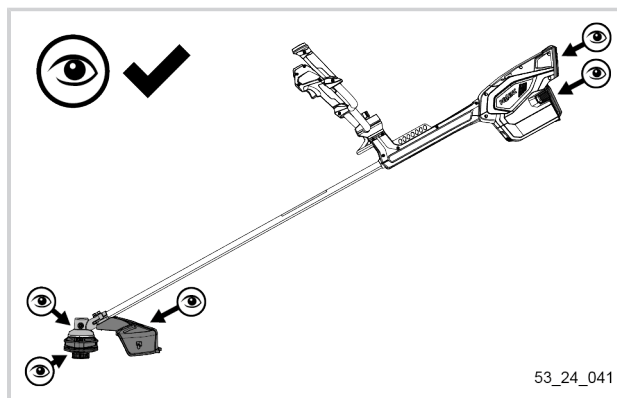
Important

- © Have the machine serviced every 500 hours or at least once a year by an authorised distributor. PELLENC.

6.3.2. VISUAL CHECK OF THE GENERAL CONDITION OF THE TOOL

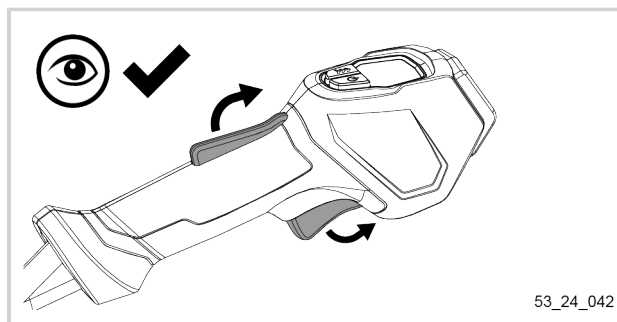
1. Check the general condition of the tool.*
2. Check the battery charge level. Recharge if necessary.
3. Check the cutting head at the shaft attachment (check for deformation or wear).*
4. Check the condition of machine's safety devices (carrying plate, safety guard, angle gear).*
5. Check the condition of the air exhaust and air intake grilles.*
6. Check that the air exhaust and air intake grilles are not obstructed.

* If any part appears damaged, have it replaced by an authorised PELENC distributor.



6.3.3. CHECKING THE TRIGGERS

1. Visually check the condition of the triggers.
2. Ensure that nothing physical (e.g. tape, collar, etc.) prevents or interferes with the operation of the triggers.
3. Press on the triggers to make sure they are operating properly.



6.4. CLEANING

Important

Energy consumption varies depending on the state of cleanliness of the tool.

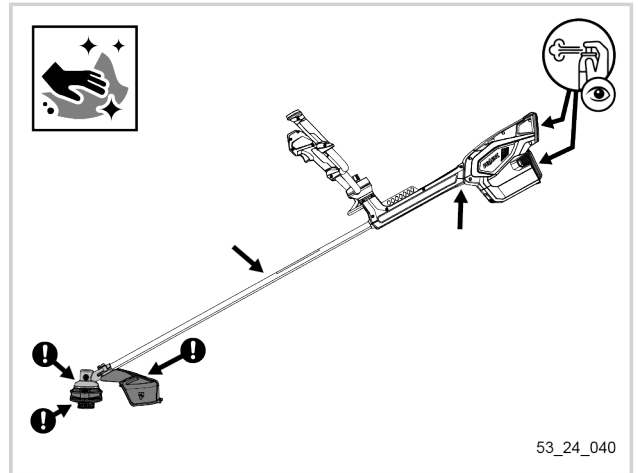
6.4.1. CLEANING THE TOOL



Warning

Ⓢ Never use solvents (trichloroethylene, white spirit, petrol, etc.) to clean the tool.
Do not use a high pressure cleaner.

1. Clean the surface of the tool with a soft, damp cloth.
2. Clean the safety casing.
If necessary remove the safety guard (see 4.4. Assembly/disassembly of the safety guard, page 20)
3. Clean the cutting head.
If necessary, remove the cutting head (see 4.5.3. Dismounting the TAP CUT 3 from the tool, page 23).
4. Using an air compressor (10 bar maximum), blow out the tool, the grille and the rotor to limit clogging.
5. Check that the holes in the air exhaust grille and the air intake grille are not obstructed.



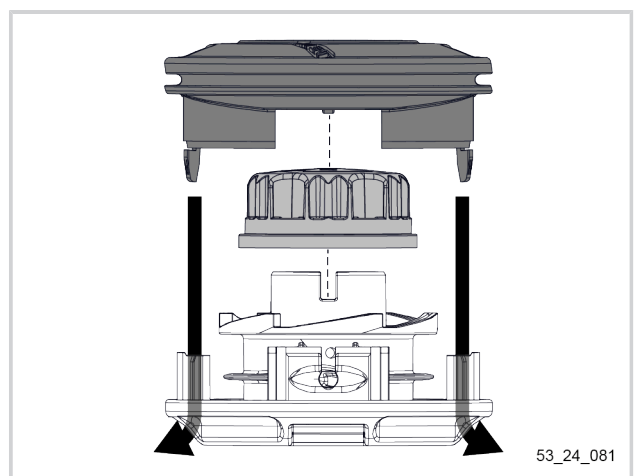
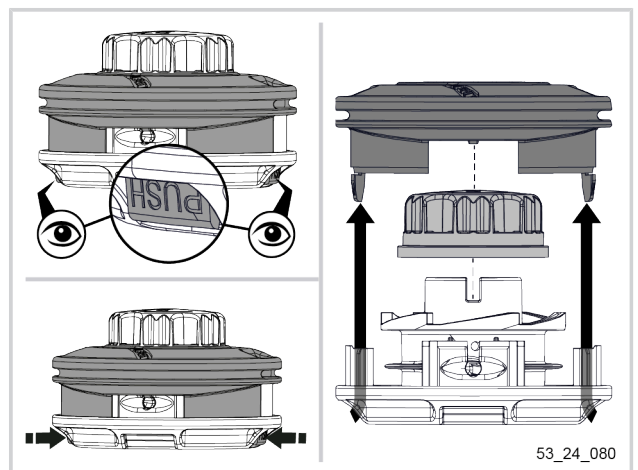
Important

After cleaning, allow the tool to dry thoroughly before using it.

6.4.2. CLEANING THE TAP CUT 3

The TAP CUT 3 cutting head may need to be cleaned after numerous uses.

1. Simultaneously press the two notches on either side of the TAP CUT 3.
2. Remove the cover and the central part of the TAP CUT 3.
3. Clean the inside of the cutting head to remove any grass or trimmer wire residue that may prevent the tool from working properly.
4. After cleaning the inside of the head, put the central part back in position.
5. Replace the head cover, making sure to line up the notches.

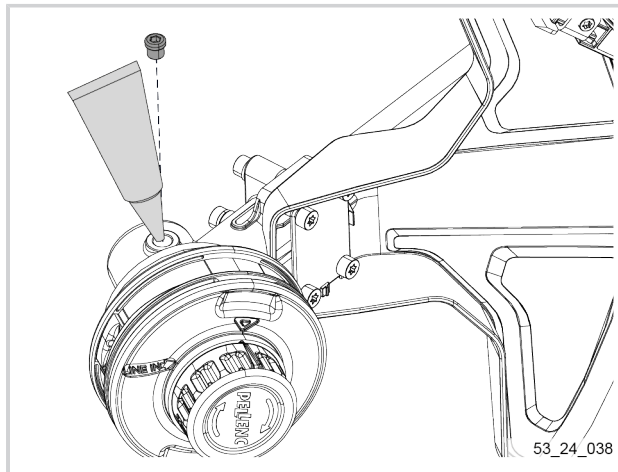


6.5. GREASING

6.5.1. ANGLE GEAR LUBRICATION

Frequency Once a month or every 100 hours
Grease Pellenc PELLENC (ref. 35749)

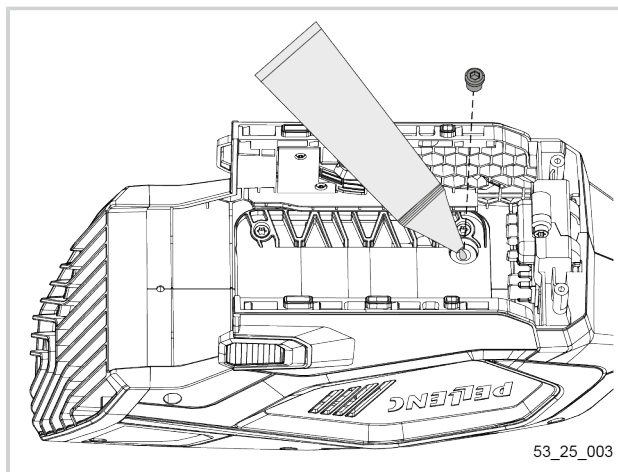
1. Loosen and remove the screw on the angle gear.
 ✕ Torx 25 wrench supplied with the tool.
2. Apply 4 grams of grease.
3. Insert and tighten the screw located on the angle gear.
 ✕ Torx 25 wrench supplied with the tool.



6.5.2. GREASING OF THE MOTOR REDUCER

Frequency Once a month or every 100 hours
Grease Pellenc PELLENC (ref. 35749)

1. Remove the adapter cover.
2. Remove the motor gearbox screw.
 ✕ Torx 25 wrench supplied with the tool.
3. Apply 4 grams of grease.
4. Insert the motor gearbox screw and tighten.
 ✕ Torx 25 wrench supplied with the tool.

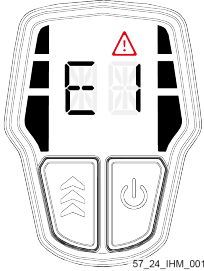
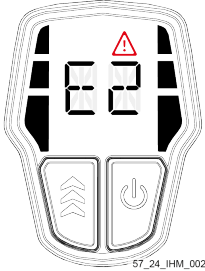
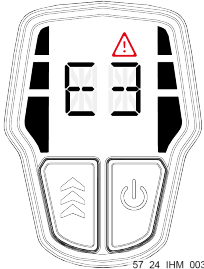
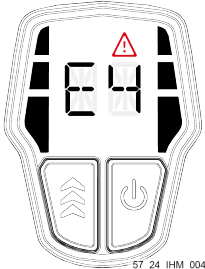
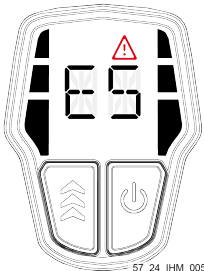
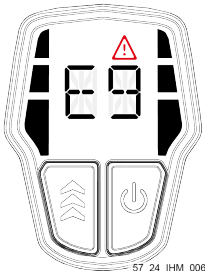
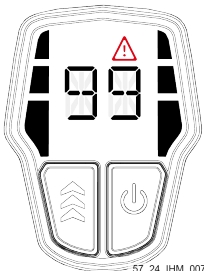


7. INCIDENTS AND TROUBLESHOOTING

Important

For any problems relating to the battery, please refer to the battery operating instruction manual. **PELLENC recommends contacting an authorised distributor PELLENC in all cases of breakdown.**

Error code description:

Fault	Probable cause	Fault	Probable cause
 57_24_IHM_001	Overcurrent tool	 57_24_IHM_002	Shutdown due to low battery voltage
 57_24_IHM_003	Communication problem with the battery (or battery not recognized)	 57_24_IHM_004	Shutdown due to high temperature
 57_24_IHM_005	Communication problem with the HMI	 57_24_IHM_006	Operating trigger problem
 57_24_IHM_007	High tool temperature or Low battery voltage Safety trigger operated before starting		

Note

Most issues can be resolved by restarting the tool.

Symptoms of the Brush cutter and grass trimmer Excelion E DH:

Symptoms	Probable cause	Solutions	Repairer
The tool does not start.	The on/off button was not pressed hard enough to switch the tool on.	Press the on/off button until the tool starts up.	User
	The battery is not properly connected.	Check that the battery is properly connected. If necessary: remove and reinstall the battery until you hear the locking clips snap into place.	User
	The battery is flat.	Check that the battery is not fully discharged. If necessary: recharge the battery.	User
	The temperature of the tool is above 90°C.	Give the tool time to cool.	User
The tool is switched on but will not start.	The tool is locked.	Unlock the tool.	User
	Trigger no longer works.	Change the trigger.	Authorized distributor PELLENC
The tool reduces its operating speed.	The tool was at speed 3 and its temperature rose above 94°C.	Continue the work at speed 2 or wait for the tool to cool down.	User
	The tool was at speed 2 and its temperature rose above 97°C.	Continue the work at speed 1 or wait for the tool to cool down.	User
The tool will not change to speed 3.	The tool has reached its temperature limit.	Continue the work at speed 2 or wait for the tool to cool down.	User
The tool will not change to speed 2.	The tool has reached its temperature limit.	Continue the work at speed 1 or wait for the tool to cool down.	User
The tool stops during use.	The trigger no longer works.	Change the trigger.	Authorized distributor PELLENC
	The tool is inactive for more than a minute.	Switch the tool on again.	User
	The tool has reached its temperature limit.	Give the tool time to cool.	User
	The battery is flat.	Recharge the battery (if less than 10% charged).	User
The tool makes an unusual noise or vibrates abnormally.	Cutting head damaged	Check the condition of the cutting head. If necessary, replace the cutting head.	User
	Damaged cutting head retaining element	Check the condition of the cutting head retaining element. If necessary: have the cutting head retaining element changed.	Authorized distributor PELLENC
	Motor shaft damaged	Check the condition of the motor shaft. If necessary: change the motor shaft	Authorized distributor PELLENC

8. STORAGE AND TRANSPORT

8.1. TRANSPORTING THE TOOL

Important

Never carry the machine or the battery by the power cord.

- Switch off the tool. See 5.3. Stopping the tool, page 32.
- Disconnect the battery. See 4.8. Disconnecting the E battery from the tool, page 28.
- Ensure that the tool and battery are packed and properly secured in the transport vehicle.

8.2. TEMPORARY STORAGE

1. Switch off the tool. See 5.3. Stopping the tool, page 32.
2. Disconnect the battery. See 4.8. Disconnecting the E battery from the tool, page 28.
3. If stored at the end of the day, carry out daily maintenance operations.
4. Store the tool in a safe place, out of reach of children and unauthorized persons.
5. When storing the battery, refer to the battery's operating instruction manual.

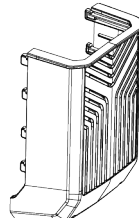
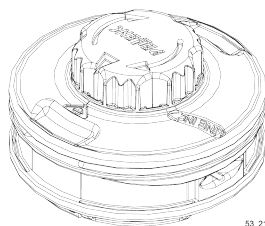
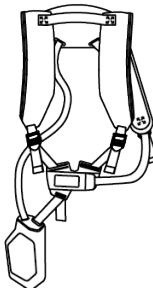
8.3. STORING THE TOOL

Important

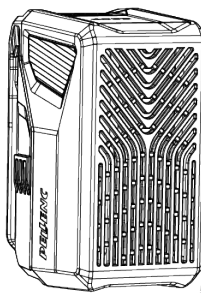

- In the event of prolonged storage, grease the output shaft of the angle gear (refer to 6.5. Greasing, page 40).
- Always store the tool clean and make sure the battery is adequately charged (refer to the battery operating instruction manual).
- The Brush cutter and grass trimmer Excelion E DH must be stored away from heat, dust and humidity at an ambient temperature of between 10°C and 35°C.
- The tool and the battery must be stored in their original packaging, in a dry place and out of the reach of children.

9. ACCESSORIES AND CONSUMABLES

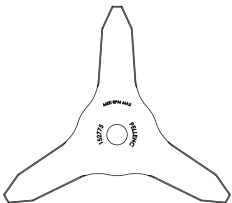
9.1. ACCESSORIES INCLUDED

Name	Reference	
Adapter cover for 400 E battery		 57_24_033
TAP CUT 3 cutting head (See 9.4. TAP CUT strimmer wire, page 45 to consult the list of strimmer wires compatible with the TAP CUT 3)	57276	 53_21_276
Carrying harness		 53_25_015

9.2. OPTIONAL ACCESSORIES

Name	Reference	
400 E battery	57334	 57_24_032
Protective storage bag		 53_20_001

9.3. OPTIONAL CUTTING TOOLS

Designation	Reference	
Trident 255 - 2.3		

9.4. TAP CUT STRIMMER WIRE

Designation	Diameter	Length +/- 1%	Reference
Strimmer wire spool shell	Ø 2.0 mm	- m	

10. WARRANTIES

10.1. GENERAL WARRANTIES

10.1.1. STATUTORY WARRANTY

10.1.1.1. LATENT DEFECTS WARRANTY

Apart from the commercial warranty provided for under Article II, Article 1641 of the French Civil Code states that "the seller is bound to a warranty on account of latent defects of the object sold which render it unfit for the use for which it was intended, or which would impair said use to the extent that the buyer would not have acquired it, or would only have paid a lesser price for it, had he/she known of them".

Article 1648 of the Civil Code "The action resulting from latent defects must be brought by the purchaser within two years after the discovery of the defect. »

10.1.1.2. LEGAL GUARANTEE OF CONFORMITY

Article L.217-4 of the French Consumer Code "The seller delivers goods in compliance with the contract and is liable for defects of conformity existing upon delivery.

The seller is also liable for any lack of conformity resulting from the packaging, assembly or installation instructions whenever its contractual liability is engaged in this regard or the latter are carried out under its responsibility.

Article L.217-5 of the French Consumer Code "Goods are compliant with the contract":

- If they are fit for the purpose normally expected of similar goods and, where applicable:
 - If they correspond to the description given by the seller and possess the qualities that were presented to the buyer in the form of a sample or model;
 - If they possess the qualities that a buyer can reasonably expect given the public statements made by the seller, the producer or its representative, especially in advertising or labelling;

2. Or if it has the characteristics defined by mutual agreement between the parties or be suitable for any special use sought by the buyer, brought to the attention of the seller and accepted by the latter.

Article L.217-12 of the French Consumer Code "legal action resulting from lack of conformity lapses two years after delivery of the goods".

The legal guarantee of conformity applies only to consumers, not to professional customers.

10.1.2. COMMERCIAL WARRANTY PELLENC

10.1.2.1. CONTENTS

10.1.2.1.1. GENERAL INFORMATION

In addition to the legal warranties, user customers benefit from the commercial warranty on products PELLENC covering the exchange and replacement of parts recognised as being out of order, due to machining defects, assembly defects or material defects, whatever the cause.

The warranty forms an inseparable whole with the product sold by PELLENC.

10.1.2.1.2. SPARE PARTS

The commercial warranty also covers original spare parts PELLENC, excluding labour and to the exclusion of certain spare parts of each product provided upon delivery.

10.1.2.2. DURATION OF WARRANTY

10.1.2.2.1. GENERAL INFORMATION

Products PELLENC connected to a battery are covered by the commercial warranty from the date of delivery to the user customer for a period of two (2) years PELLENC, associated robotic products are also covered PELLENC and other products are covered for one (1) year PELLENC.

10.1.2.2.2. SPARE PARTS

Spare parts PELLENC replaced under the product warranty are guaranteed under the commercial warranty from the delivery of the product PELLENC to the user customer for a period of two (2) years in the case of products connected to a battery PELLENC, and for a period of one (1) year in respect of other products PELLENC.

In the case of products connected to a battery PELLENC, spare parts that are replaced under the product warranty after the 12th month of use are covered for a period of one (1) year.

10.1.2.2.3. WARRANTY EXCLUSIONS

Products that have been subject to abnormal use, or that have been used under conditions and for purposes other than those for which they were manufactured, are excluded from the commercial warranty, especially in the case of non-compliance with the conditions stipulated in this user manual.

Nor does it apply in the event of impact, dropping, negligence, lack of supervision or maintenance or if the product has been transformed. Products that have been altered, transformed or modified by the user customer are also excluded from the warranty.

Wear parts and/or consumables are not covered by the warranty.

10.1.2.3. IMPLEMENTATION OF THE COMMERCIAL WARRANTY

10.1.2.3.1. PRODUCT COMMISSIONING AND COMMISSIONING DECLARATION

At the time of the sale, the DISTRIBUTOR and/or customer-user undertakes to **complete the online warranty activation form** in full on the Pellenc Service website.

The warranty must always be activated by the DISTRIBUTOR in order to demonstrate that it has fulfilled its information obligations towards the Customer. The DISTRIBUTOR may be held liable if the accident was caused by a failure to provide advice on its part.

Activating the warranty also activates the commercial warranty. Without this, PELLENC will not be able to honour any commercial warranty. , and the DISTRIBUTOR must therefore bear the financial burden alone without being able to pass on the cost of its intervention under the warranty to the user customer.

10.1.3. PAID AFTER-SALES SERVICE

10.1.3.1. GENERAL INFORMATION

Malfunctions, breakdowns, breakages resulting from misuse, negligence or improper maintenance by the user customer, as well as malfunctions resulting from the normal wear of the product, are subject to the payment of the after-sales service, even during the period of the legal and commercial warranty. After-sales service repairs that fall outside of the legal and commercial warranty also include maintenance, adjustments, diagnostics of all types, and cleaning, without the present list being exhaustive.

10.1.3.2. WEAR PARTS AND CONSUMABLES

Wear parts and consumables also fall within the after-sales service.

10.1.3.3. SPARE PARTS

The paid after-sales service also covers original spare parts PELLENC, excluding labour and outside the legal or commercial warranty period.

In case of replacement of original spare parts PELLENC in the context of the after-sales service, said latter are covered by a commercial warranty of one year as of the installation date.

11. STATEMENTS OF COMPLIANCE

11.1. DECLARATION OF COMPLIANCE: EXCELION E DH

MANUFACTURER / PERSON AUTHORISED TO COMPILE THE TECHNICAL FILE	PELLENC
ADDRESS	Quartier Notre-Dame, Route de Cavaillon CS 10047, 84120 Pertuis, France

We hereby declare that the machine designated below:

GENERIC DENOMINATION	BRUSH CUTTER AND GRASSER STRIMMER		
FUNCTION	MAINTAINING GREEN AREAS		
COMMERCIAL NAME	EXCELION E		
TYPE	EXCELION E		
MODEL	EXCELION E DH		
SERIAL NO.	53Z00001 - 53Z49999	53A00001 - 53A49999	53B00001 - 53B49999

This declaration of conformity is issued under the sole responsibility of the manufacturer.

The following standards have been used in whole or in part:

- Directive 2006/42/EC
- Directive 2014/30/EU
- Directive 2011/65/EU
- Regulation (REACH) No 1907/2006
- Directive 2012/19/EU
- Directive 2000/14/EU

The following standards have been used in whole or in part:

- EN 60335-1:2012 + A11:2014 + A13:2017 + A1:2019 + A2:2019 + A14:2019 + A15:2021 + A16:2023
- EN 50636-2-91:2014
- EN ISO 11806-1:2022
- EN 62841-1:2015 + A11:2022
- FprEN IEC 62841-4-4:2020 / FprAA:2021
- EN IEC 55014-1:2021
- EN IEC 55014-2:2021
- EN ISO 12100:2010

Sound power level:

- Measured sound power level L_{WAm} : 94.4 dB (A)
- Guaranteed sound power level L_{WAg} : 95 dB(A)

The measured noise level and the guaranteed noise level were measured according to a procedure in accordance with Directive 2000/14 / EC Annex V.

Signed for and on behalf of:

Pascal MOULINIER
Group VP Engineering

A handwritten signature in black ink, appearing to read 'Pascal Moulinier', with a stylized flourish at the end.

PERTUIS, date: 2025-04-25

11.2. UK DECLARATION OF CONFORMITY ^{UK}CA : EXCELION E DH

MANUFACTURER / PERSON AUTHORISED TO COMPILE THE TECHNICAL FILE	PELENC
ADDRESS	Quartier Notre-Dame - 84120 Pertuis (France)

We hereby declare that the machine referred to below as:

GENERIC DENOMINATION	BRUSH CUTTER AND GRASSER STRIMMER		
FUNCTION	MAINTAINING GREEN AREAS		
COMMERCIAL NAME	EXCELION E		
TYPE	EXCELION E		
MODEL	EXCELION E DH		
SERIAL NO.	53Z00001 - 53Z49999	53A00001 - 53A49999	53B00001 - 53B49999

This declaration of conformity is issued under the sole responsibility of the manufacturer.

The object of the declaration described above is in conformity with the relevant statutory requirements:

- Electromagnetic Compatibility Regulations 2016
- 1907/2006 REACH Regulations
- The Waste Electrical and Electronic Equipment Regulations 2013
- BS EN 62841-1 : 2015
- BS EN ISO 11806-1 : 2011
- the Restriction of the Use of Certain Hazardous Substances in Electrical and Electronic Equipment Regulations 2012
- S.I. No. 632/2001 - European Communities (Noise Emission by Equipment For Use Outdoors) Regulations
- BS EN 55014-1 : 2017
- BS EN 55014-2 : 2015.

Sound power level:

- Measured sound power level L_{WAm} : 94.4 dB (A)
- Guaranteed sound power level L_{WAg} : 95 dB(A)

The measured sound level and the guaranteed sound power level were measured according to a procedure compliant with Directive 2000/14/EC Annex V.

Signed by and on behalf of :

Pascal MOULINIER
CHIEF EXECUTIVE OFFICER



PERTUIS, date: 2025-04-25

PELENC

   www.pellenc.com

PELENC
Quartier Notre Dame - 84120 Pertuis (France)

