

**ENG**

Translated from the original manual



# GRASS TRIMMER EXCELION E LH

Operating  
Instructions Manual

53\_185855-A  
04/2025

**READ THE USER OPERATING GUIDE CAREFULLY BEFORE USE**



# TABLE OF CONTENTS

<b>1. INTRODUCTION .....</b>	<b>6</b>
<b>2. SAFETY .....</b>	<b>7</b>
<b>2.1. GENERAL POWER TOOL SAFETY WARNINGS .....</b>	<b>7</b>
2.1.1. WORK AREA SAFETY .....	7
2.1.2. ELECTRICAL SAFETY .....	7
2.1.3. PERSONAL SAFETY .....	7
2.1.4. POWER TOOL USE AND CARE .....	8
2.1.5. BATTERY TOOL USE AND CARE .....	8
2.1.6. SERVICE .....	9
<b>2.2. GRASS TRIMMER, BRUSH CUTTER AND BRUSH SAW SAFETY WARNINGS .....</b>	<b>9</b>
<b>2.3. USE OF THE DEVICE BY CHILDREN AND PEOPLE WITH REDUCED ABILITIES .....</b>	<b>10</b>
<b>2.4. SAFE OPERATING PRACTICES .....</b>	<b>10</b>
2.4.1. TRAINING .....	10
2.4.2. PREPARATION .....	10
2.4.3. OPERATION .....	10
2.4.4. MAINTENANCE AND STORAGE .....	10
<b>2.5. SAFETY WARNINGS RELATING TO THE GRASS TRIMMER EXCELION E LH .....</b>	<b>11</b>
<b>2.6. MANAGEMENT OF THE RECYCLING AND RECOVERY OF WASTE FROM YOUR TOOL .....</b>	<b>11</b>
<b>2.7. SAFETY MEASURES ASSOCIATED WITH BATTERY USE .....</b>	<b>11</b>
<b>2.8. SAFETY SIGNAGE .....</b>	<b>12</b>
<b>2.9. PERSONAL PROTECTION EQUIPMENT .....</b>	<b>13</b>
<b>3. DESCRIPTION AND TECHNICAL FEATURES .....</b>	<b>14</b>
<b>3.1. DESCRIPTION OF THE TOOL .....</b>	<b>14</b>
<b>3.2. TECHNICAL FEATURES .....</b>	<b>15</b>
3.2.1. TOOL FEATURES .....	15
3.2.2. FEATURES OF THE CUTTING HEAD PROVIDED .....	15
3.2.3. VIBRATION AND NOISE EMISSION VALUES .....	15
<b>4. START-UP .....</b>	<b>16</b>
<b>4.1. PACKAGE CONTENTS .....</b>	<b>16</b>
<b>4.2. ASSEMBLY/DISASSEMBLY THE BATTERY ADAPTER COVERS .....</b>	<b>16</b>
4.2.1. ASSEMBLY OF THE ADAPTER COVER FOR THE 400 E BATTERY .....	16
4.2.2. DISASSEMBLY OF THE ADAPTER COVER FOR THE 400 E BATTERY .....	17
<b>4.3. FITTING/DISMOUNTING THE ROUND HANDLE ON THE GRASS TRIMMER .....</b>	<b>17</b>
4.3.1. FITTING THE ROUND HANDLE .....	17
4.3.2. DISMOUNTING THE ROUND HANDLE .....	18
<b>4.4. ASSEMBLY/DISASSEMBLY OF THE SAFETY GUARD .....</b>	<b>18</b>
4.4.1. FITTING THE STANDARD SAFETY GUARD .....	18
4.4.2. DISMOUNTING THE STANDARD SAFETY GUARD .....	19
<b>4.5. FITTING AND DISMOUNTING OF THE TAP CUT 3 .....</b>	<b>19</b>
4.5.1. FITTING THE TAP CUT 3 ONTO THE TOOL .....	19
4.5.2. FITTING A STRIMMER WIRE .....	20

4.5.3. DISMOUNTING THE TAP CUT 3 FROM THE TOOL .....	21
<b>4.6. CONNECTING THE E BATTERIES TO THE TOOL .....</b>	<b>22</b>
<b>4.7. DISCONNECTING THE E BATTERY FROM THE TOOL .....</b>	<b>23</b>
<b>4.8. ADJUSTING THE WORKING POSITION .....</b>	<b>23</b>
4.8.1. INSTALLING AND ADJUSTING THE CARRYING STRAP .....	23
4.8.2. REMOVING THE CARRYING STRAP .....	25
<b>5. USE .....</b>	<b>25</b>
5.1. SWITCHING ON THE TOOL .....	26
5.2. UNLOCKING AND STARTING THE TOOL .....	26
5.3. STOPPING THE TOOL .....	27
5.4. SELECTING WORKING SPEED .....	27
5.5. TIPS FOR USE AND WORKING TECHNIQUES .....	28
5.5.1. ADVICE FOR OPTIMIZING THE BATTERY .....	28
5.5.2. TIPS ON USE AND MOWING TECHNIQUES .....	28
<b>6. SERVICE .....</b>	<b>31</b>
6.1. MAINTENANCE ADVICE .....	31
6.2. MAINTENANCE TABLE .....	31
6.3. CHECK .....	31
6.3.1. ANNUAL OVERHAUL .....	31
6.3.2. VISUAL CHECK OF THE GENERAL CONDITION OF THE TOOL .....	32
6.3.3. CHECKING THE TRIGGERS .....	32
6.4. CLEANING .....	32
6.4.1. CLEANING THE TOOL .....	32
6.4.2. CLEANING THE TAP CUT 3 .....	33
6.5. GREASING .....	34
6.5.1. ANGLE GEAR LUBRICATION .....	34
6.5.2. GREASING OF THE MOTOR REDUCER .....	34
<b>7. INCIDENTS AND TROUBLESHOOTING .....</b>	<b>35</b>
<b>8. STORAGE AND TRANSPORT .....</b>	<b>37</b>
8.1. TRANSPORTING THE TOOL .....	37
8.2. TEMPORARY STORAGE .....	37
8.3. STORING THE TOOL .....	37
<b>9. ACCESSORIES AND CONSUMABLES .....</b>	<b>38</b>
9.1. ACCESSORIES INCLUDED .....	38
9.2. OPTIONAL ACCESSORIES .....	38
9.3. TAP CUT STRIMMER WIRE .....	39
<b>10. WARRANTIES .....</b>	<b>39</b>
10.1. GENERAL WARRANTIES .....	39
10.1.1. STATUTORY WARRANTY .....	39
10.1.2. COMMERCIAL WARRANTY PELLENC .....	40
10.1.3. PAID AFTER-SALES SERVICE .....	41

<b>11. STATEMENTS OF COMPLIANCE .....</b>	<b>42</b>
11.1. DECLARATION <b>CE</b> OF COMPLIANCE: EXCELION E LH .....	42
11.2. UK DECLARATION OF CONFORMITY <b>UK CA</b> : EXCELION E LH .....	44

## 1. INTRODUCTION

Dear Customer,

Thank you for purchasing your Grass trimmer Excelion E LH . Properly used and maintained, this equipment will give you years of satisfaction.



### Warning

In accordance with product liability laws, we are not responsible for damage caused by our product if the product includes an accessory that is not from the manufacturer or is not approved by the manufacturer. The use of any other accessory may increase the risk of injury.



### Warning

Your device contains numerous recoverable or recyclable materials. Return it to your dealer or, failing this, to an approved servicing centre to be treated.



Comply with the regulations in force in your country as concerns environmental protection associated with your activity.



### Warning

It is imperative that you read through the ENTIRE user's manual guide before using or servicing the tool. Always comply with the instructions and illustrations in the manual.


Throughout the user's manual guide you will find advisory notes and information entitled: NOTE, IMPORTANT, ATTENTION and WARNING.

Points marked "NOTE" indicate additional information.

Points marked "IMPORTANT" warn the user of a potential risk for the equipment.

Points marked "CAUTION" warn the user of a potentially hazardous situation which if not avoided may result in minor injuries.

Points marked "WARNING" warn the user of a potentially hazardous situation which if not avoided may result in serious injury or death.

The warning  indicates that damage resulting from failure to comply with the procedures and instructions is not covered by the warranty and the owner will be liable for any repair costs.

Safety signs on the tool also indicate the safety precautions to be observed. Locate these signs and read them before using your machine. Any partially illegible or damaged sign should be replaced immediately.

Refer to 2.8. Safety signage, page 12 for the location diagram of the safety stickers affixed to the tool.

No part of this manual may be reproduced without the written permission of the PELLENC company. The illustrations provided in this manual are for information purposes only and are in no way contractual. The PELLENC company reserves the right to make any modification or improvement to its products as deemed necessary without informing customers already in possession of a similar model. This manual forms an integral part of the tool and must accompany the tool if it changes hands.

## 2. SAFETY

- The Grass trimmer Excelion E LH is a professional tool whose use is reserved exclusively for clearing green spaces (grasses, dense grasses, woody weeds, brambles and small shrubs).
- The PELENC company accepts no responsibility for any damage caused by improper or unspecified use different from its original intention.
- The PELENC company accepts no responsibility for any damage caused by the use of non-original parts or accessories.

### 2.1. GENERAL POWER TOOL SAFETY WARNINGS



#### Warning

**Read all safety warnings, instructions, illustrations and specifications provided with this power tool.** Failure to follow all instructions listed below may result in electric shock, fire and/or serious injury.

**Save all warnings and instructions for future reference.**

The term “power tool” in the warnings refers to your mains-operated (corded) power tool or battery-operated (cordless) power tool.

#### 2.1.1. WORK AREA SAFETY

- Keep work area clean and well lit.** Cluttered or dark areas invite accidents.
- Do not operate power tools in explosive atmospheres, such as in the presence of flammable liquids, gases or dust.** Power tools create sparks, which can ignite dust or fumes.
- Keep children and bystanders away while operating the power tool.** Distractions can cause you to lose control.

#### 2.1.2. ELECTRICAL SAFETY

- Power tool plugs must match the outlet. Never modify the plug in any way. Do not use adapter plugs with earthed (grounded) power tools.** Unmodified plugs and matching outlets will reduce risk of electric shock.
- Avoid body contact with earthed or grounded surfaces, such as pipes, radiators, ranges and refrigerators.** There is an increased risk of electric shock if your body is earthed or grounded.
- Do not operate the machine in rain or wet conditions.** Water entering the machine may increase the risk of electric shock or malfunction that could result in personal injury.
- Do not abuse the cord. Never use the cord for carrying, pulling or unplugging the power tool. Keep cord away from heat, oil, sharp edges, and moving parts.** Damaged or entangled cords increase the risk of electric shock.
- When operating a power tool outdoors, use an extension cord suitable for outdoor use.** Use of a cord suitable for outdoor use reduces the risk of electric shock.
- If operating a power tool in a damp location is unavoidable, use a RESIDUAL CURRENT DEVICE (RCD) protected supply.** Use of an RCD reduces the risk of electric shock.

#### 2.1.3. PERSONAL SAFETY

- Stay alert, watch what you are doing and use common sense when operating a power tool. Do not use a power tool while you are tired or under the influence of drugs, alcohol or medication.** A moment of inattention while operating power tools may result in serious personal injury.
- Use personal protective equipment. Always wear eye protection.** Protective equipment such as a dust mask, non-skid safety shoes, hard hat or hearing protection used for appropriate conditions will reduce personal injuries.

- c. **Prevent unintentional starting.** Ensure the switch is in the off-position before connecting to power source and/or battery pack, picking up or carrying the tool. *Carrying power tools with your finger on the switch or energising power tools that have the switch on invites accidents.*
- d. **Remove any adjusting key or wrench before turning the power tool on.** *A wrench or a key left attached to a rotating part of the power tool may result in personal injury.*
- e. **Do not overreach. Keep proper footing and balance at all times.** *This enables better control of the power tool in unexpected situations.*
- f. **Dress properly. Do not wear loose clothing or jewellery. Keep your hair and clothing away from moving parts.** *Loose clothes, jewellery or long hair can be caught in moving parts.*
- g. **If devices are provided for the connection of dust extraction and collection facilities, ensure these are connected and properly used.** *Use of dust collection can reduce dust-related hazards.*
- h. **Do not let familiarity gained from frequent use of tools allow you to become complacent and ignore tool safety principles.** *A careless action can cause severe injury within a fraction of a second.*

#### 2.1.4. POWER TOOL USE AND CARE

- a. **Do not force the power tool. Use the correct power tool for your application** *The correct power tool will do the job better and safer at the rate for which it was designed.*
- b. **Do not use the power tool if the switch does not turn it on and off.** *Any power tool that cannot be controlled with the switch is dangerous and must be repaired.*
- c. **Disconnect the plug from the power source and/or remove the battery pack, if detachable, from the power tool before making any adjustments, changing accessories, or storing power tools.** *Such preventive safety measures reduce the risk of starting the power tool accidentally.*
- d. **Store idle power tools out of the reach of children and do not allow persons unfamiliar with the power tool or these instructions to operate the power tool.** *Power tools are dangerous in the hands of untrained users.*
- e. **Maintain power tools and accessories. Check for misalignment or binding of moving parts, breakage of parts and any other condition that may affect the power tool's operation. If damaged, have the power tool repaired before use.** *Many accidents are caused by poorly maintained power tools.*
- f. **Keep cutting tools sharp and clean.** *Properly maintained cutting tools with sharp cutting edges are less likely to bind and are easier to control.*
- g. **Use the power tool, accessories and tool bits etc. in accordance with these instructions, taking into account the working conditions and the work to be performed.** *Use of the power tool for operations different from those intended could result in a hazardous situation.*
- h. **Keep handles and grasping surfaces dry, clean and free from oil and grease.** *Slippery handles and grasping surfaces do not allow for safe handling and control of the tool in unexpected situations.*

#### 2.1.5. BATTERY TOOL USE AND CARE

- a. **Recharge only with the charger specified by the manufacturer.** *A charger that is suitable for one type of battery pack may create a risk of fire when used with another battery pack.*
- b. **Use power tools only with specifically designated battery packs.** *Use of any other battery packs may create a risk of injury and fire.*
- c. **When battery pack is not in use, keep it away from other metal objects, like paper clips, coins, keys, nails, screws or other small metal objects, that can make a connection from one terminal to another.** *Shorting the battery terminals together may cause burns or a fire.*
- d. **Under abusive conditions, liquid may be ejected from the battery; avoid contact. If contact accidentally occurs, flush with water. If liquid contacts eyes, additionally seek medical help.** *Liquid ejected from the battery may cause irritation or burns.*
- e. **Do not use a battery pack or tool that is damaged or modified.** *Damaged or modified batteries may exhibit unpredictable behaviour resulting in fire, EXPLOSION or risk of injury.*
- f. **Do not expose a battery pack or tool to fire or excessive temperature.** *Exposure to fire or temperature above 130 °C (265 °F) may cause explosion.*
- g. **Follow all charging instructions and do not charge the battery pack or tool outside the temperature range specified in the instructions.** *Charging improperly or at temperatures outside the specified range may damage the battery and increase the risk of fire.*



### 2.1.6. SERVICE

- a. **Have your power tool serviced by a qualified repair person using only identical replacement parts.** *This will ensure that the safety of the power tool is maintained.*
- b. **Never service damaged battery packs.** *Service of battery packs should only be performed by the manufacturer or authorized service providers.*

## 2.2. GRASS TRIMMER, BRUSH CUTTER AND BRUSH SAW SAFETY WARNINGS

1. **Do not use the machine in bad weather conditions, especially when there is a risk of lightning.** *This decreases the risk of being struck by lightning.*
2. **Thoroughly inspect the area for wildlife where the machine is to be used.** *Wildlife may be injured by the machine during operation.*
3. **Thoroughly inspect the area where the machine is to be used and remove all stones, sticks, wires, bones, and other foreign objects.** *Thrown objects can cause personal injury.*
4. **Before using the machine, always visually inspect to see that the cutter or blade and the cutter or blade assembly are not damaged.** *Damaged parts increase the risk of injury.*
5. **Follow instructions for changing accessories.** *Improperly tightened blade securing nuts or bolts may either damage the blade or result in it becoming detached.*
6. **While operating the machine, always wear non-slip and protective footwear. Do not operate the machine when barefoot or wearing open sandals.** *This reduces the chance of injury to the feet from contact with the moving cutter line or blade.*
7. **While operating the machine, always wear long trousers.** *Exposed skin increases the likelihood of injury from thrown objects.*
8. **Keep bystanders away while operating the machine.** *Thrown debris can result in serious personal injury.*
9. **Always use two hands when operating the machine.** *Holding the machine with both hands will avoid loss of control.*
10. **Hold the machine by the insulated gripping surfaces only, because the cutting line or blade may contact hidden wiring.** *Cutting line or blades contacting a "live" wire may make exposed metal parts of the machine "live" and could give the operator an electric shock.*
11. **Always keep proper footing and operate the machine only when standing on the ground.** *Slippery or unstable surfaces may cause a loss of balance or control of the machine.*
12. **Do not operate the machine on excessively steep slopes.** *This reduces the risk of loss of control, slipping and falling which may result in personal injury.*
13. **When working on slopes, always be sure of your footing, always work across the face of slopes, never up or down and exercise extreme caution when changing direction.** *This reduces the risk of loss of control, slipping and falling which may result in personal injury.*
14. **Keep all parts of the body away from the cutter, line or blade when the machine is operating. Before you start the machine, make sure the cutter, line or blade is not contacting anything.** *A moment of inattention while operating the machine may result in injury to yourself or others.*
15. **Do not operate the machine above waist height.** *This helps prevent unintended cutter or blade contact and enables better control of the machine in unexpected situations.*
16. **When cutting brush or saplings that are under tension, be alert for spring back.** *When the tension in the wood fibres is released, the brush or sapling may strike the operator and/or throw the machine out of control.*
17. **Use extreme caution when cutting brush and saplings.** *The slender material may catch the blade and be whipped toward you or pull you off balance.*
18. **Maintain control of the machine and do not touch cutters, lines or blades and other hazardous moving parts while they are still in motion.** *This reduces the risk of injury from moving parts.*
19. **Carry the machine with the machine switched off and away from your body.** *Proper handling of the machine will reduce the likelihood of accidental contact with a moving cutter, line or blade.*
20. **Only use replacement cutters, lines, cutting heads and blades specified by the manufacturer.** *Incorrect replacement parts may increase the risk of breakage and injury.*
21. **When clearing jammed material or servicing the machine, make sure the switch is off and the battery pack is removed.** *Unexpected starting of the machine while clearing jammed material or servicing may result in serious personal injury.*

## 2.3. USE OF THE DEVICE BY CHILDREN AND PEOPLE WITH REDUCED ABILITIES

This appliance can be used by children aged from 8 years and above and persons with reduced physical, sensory or mental capabilities or lack of experience and knowledge if they have been given supervision or instruction concerning use of the appliance in a safe way and understand the hazards involved. Children shall not play with the appliance. Cleaning and user maintenance shall not be made by children without supervision.

## 2.4. SAFE OPERATING PRACTICES

### Important

READ CAREFULLY BEFORE USE.

KEEP FOR FUTURE REFERENCE

### 2.4.1. TRAINING

1. Read the instructions carefully. Be familiar with the controls and the correct use of the machine.
2. Never allow children or people unfamiliar with these instructions to use the machine. Local regulations can restrict the age of the operator.
3. Keep in mind that the operator or user is responsible for accidents or hazards occurring to other people or their property.

### 2.4.2. PREPARATION

1. Before use check the supply and extension cord for signs of damage or aging. If the cord becomes damaged during use, disconnect the cord from the supply immediately. **DO NOT TOUCH THE CORD BEFORE DISCONNECTING THE SUPPLY.** Do not use the machine if the cord is damaged or worn.
2. Before use, always visually inspect the machine for damaged, missing or misplaced guards or shields.
3. Never operate the machine while people, especially children, or pets are nearby.

### 2.4.3. OPERATION

1. Keep supply and extension cords away from **cutting means**.
2. Wear eye protection and stout shoes at all times while operating the machine.
3. Avoid using the machine in bad weather conditions especially when there is a risk of lightning.
4. Use the machine only in daylight or good artificial light.
5. Never operate the machine with damaged guards or shields or without guards or shields in place.
6. Switch on the motor only when the hands and feet are away from the **cutting means**.
7. Always disconnect the machine from the power supply (i.e. remove the plug from the mains, remove the disabling device or removable battery).
  - whenever the machine is left unattended;
  - before clearing a blockage;
  - before checking, cleaning or working on the machine;
  - after striking a foreign object;
  - whenever the machine starts vibrating abnormally.
8. Take care against injury to feet and hands from the **cutting means**.
9. Always ensure that the ventilation openings are kept clear of debris.

### 2.4.4. MAINTENANCE AND STORAGE

1. Disconnect the machine from the power supply (i.e. remove the plug from the mains, remove the disabling device or removable battery) before carrying out maintenance or cleaning work.
2. Use only the manufacturer's recommended replacement parts and accessories.

3. Inspect and maintain the machine regularly. Have the machine repaired only by an authorized repairer
4. When not in use, store the machine out of the reach of children.

## 2.5. SAFETY WARNINGS RELATING TO THE GRASS TRIMMER EXCELION E LH

1. Do not use metal cutting tools.
2. Clear the work zone of all obstacles (glass, stone, metal, waste, and other solid objects) as they can be projected when working with the cutting tool.
3. Never use the Grass trimmer Excelion E LH with only one hand.
4. Always use the machine with the cutting head parallel to the ground. The safety guard no longer provides sufficient protection if the angle of the cutting head is excessive, This can increase the risk of injury from flying debris.
5. Immediately stop the Grass trimmer Excelion E LH in the event of a change in the behaviour of the cutting tool (change in noise, increased vibration). Check that the cutting tool is properly attached and verify its condition (no distortion, sufficiently sharp). Replace any damaged cutting tool as it can explode and cause serious, even fatal injuries.
6. CAUTION: The cutting tool continues rotating for a few seconds after the control trigger has been released. Always keep your hands and feet clear of the rotating cutting tool.
7. **Strimmer wire**
  - Never remove the blade installed in the safety guard as it trims the strimmer wire to the appropriate length.
  - Never use metal wire or any other material instead of the nylon cutting wire. Metal wire is likely to break and be projected, causing serious injuries.
  - Only use nylon strimmer wire recommended by PELLENC with a max. diameter of 3 mm.
8. Put on the harness and carrying strap of the tool.

## 2.6. MANAGEMENT OF THE RECYCLING AND RECOVERY OF WASTE FROM YOUR TOOL

- a. **When the tool reaches the end of its life, PELLENC keeps the end of life sheet of the equipment at disposal.** The end-of-life sheet provides instructions for safely removing components.

## 2.7. SAFETY MEASURES ASSOCIATED WITH BATTERY USE

1. If not using the battery unit, store it away from other metal objects such as paper clips, coins, keys, nails, screws or other such small metal items that might form a connection between the two terminals. Creating a short circuit between the battery terminals can result in burns or even a fire.
2. Keep the battery out of the reach of children and place it on a non-combustible support.
3. Do not interfere with its cooling cycle.
4. Do not use or leave the battery near a heat source (> 60°C).
5. Do not leave the battery in direct, strong sunlight.
6. Do not expose the battery to microwaves or high pressure.
7. Do not immerse the battery in water.
8. The batteries must be charged in a dry, ventilated room at a temperature between 10°C and 25°C maximum, away from any moisture.
9. If the battery is not used for 10 days, the battery will automatically discharge until it reaches its storage charge rate, and then goes to sleep. Warming up occurs during this phase.<sup>1</sup>
10. Over time, the capacity of your battery decreases. When it reaches half of its original battery life operating autonomy, it should be replaced.
11. The battery may lose 1 to 4% of its capacity when exposed to a temperature higher than or equal to 55°C for one week.
12. The charging location must be equipped with a class D fire extinguisher (for metal fire) in good working order.
13. The standards in effect must be complied with when either shipping a complete tool or a battery.
  - Complete tool with battery: product classified UN3481 class 9.
  - Battery alone: product classified UN3480 class 9.
14. Using a battery other than the one supplied by Pellenc S.A.S. is dangerous (risk of serious bodily injury). In this case, Pellenc S.A.S. cannot be held liable.

<sup>1</sup>Exceptions are the Alpha Lite, M32C, 200E and 400E batteries which discharge directly.

15. The battery must be protected from any impact and must be positioned and secured appropriately during transportation.
16. In the case of suspicious smoke, place the battery outside the charging area or transportation vehicle as far away as possible from any inflammable material.
17. Never store a battery when its capacity is below 50%. Recharge the battery before storage if the value is below 50%.
18. Under inappropriate conditions, liquid may leak from the batteries; avoid contact. In the event of accidental contact, rinse with water. In the event of contact with eyes, seek professional medical help. The liquid leaking from the batteries can cause irritations or burns.
19. Pellenc power tools must only be used with the battery units designed for this purpose. Use of other battery units can present a risk of injury and fire.
20. Recharge only with the charger specified by the manufacturer. A charger suitable for one type of battery unit may present a risk of fire if used with another type of battery unit.
21. Do not use the battery for any purpose other than that initially envisaged (exclusively for use with Pellenc tools).
22. At the end of its life, the battery must be returned to the authorised distributor from whom it was purchased to be recycled in accordance with waste regulations.
23. Fragile case, contains an electronic circuit board and lithium.

## 2.8. SAFETY SIGNAGE



**Please read the operating instruction manual.**  
*Read the manual carefully and follow the safety precautions.*



Wearing safety goggles and a helmet is compulsory.



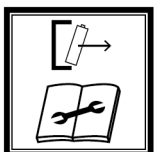
Wearing gloves is compulsory.



Wearing safety boots is compulsory.



Prohibition on the use of metal saws.  
Requires the use of the TAP CUT 3 cutting head.



Disconnect the battery before carrying out maintenance.



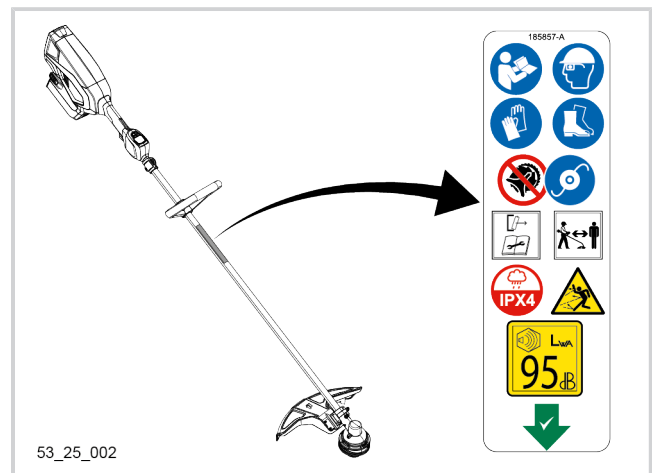
Safe distance to be observed. Keep bystanders away when the machine is running.



IPX4 protection rating: the product is suitable for all weather conditions and is resistant to heavy water splashes. However, it is not immersion-resistant.



Risk of flying debris.



53\_25\_002



LwA sound power level guaranteed.  
Wearing of hearing protection is compulsory.



Indicates the location of the round handle and the distancing bar

00\_20\_043

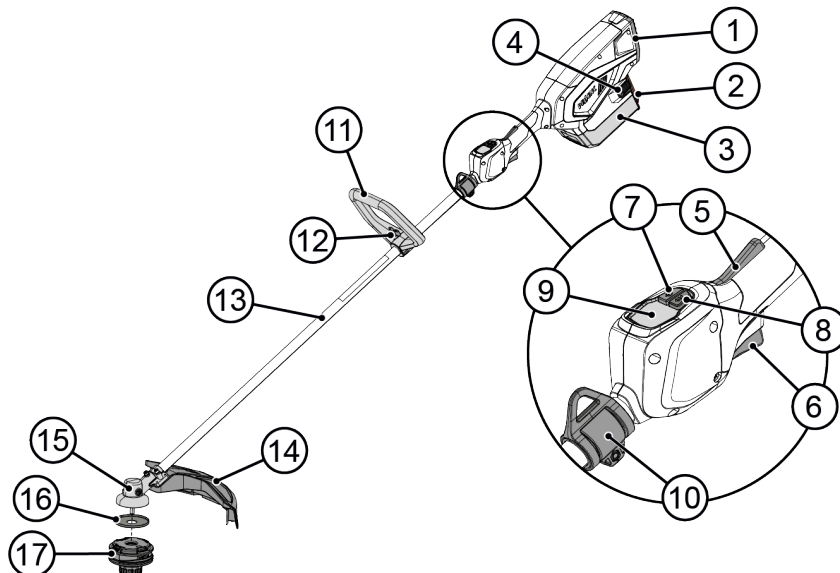
## 2.9. PERSONAL PROTECTION EQUIPMENT

		Equipment	Wearing of	Description
	1	Safety helmet	Recommended	Mandatory if there is a risk of falling objects.
	2	Protective visor	Recommended	Risk of projections.
	3	Hard-wearing gloves	Mandatory	Wear hand protection especially when working on the cutting tool.
	4	Robust, non-slip safety shoes	Mandatory	When operating the machine, always wear non-slip safety shoes. Do not operate the machine barefoot or with sandals on.
	5	Hearing protection	Mandatory	Wear approved ear protectors with sufficient noise attenuating effect. Prolonged exposure to noise can cause permanent hearing damage.
	6	Safety goggles	Mandatory	Wear approved eye protection.
	7	Safety jacket or over-sleeves	Recommended	Risk of projections.
	8	Work trousers	Recommended	Always wear clothing that covers the operator's legs when the machine is in operation.
	9	Shin pads	Recommended	Risk of projections.

00\_20\_054

### 3. DESCRIPTION AND TECHNICAL FEATURES

#### 3.1. DESCRIPTION OF THE TOOL



53\_24\_089

- |   |  |
|---|--|
| 1. Exhaust air grille: hot air discharge grille that cools the motor and the electronic board   | 8. Speed selector button   |
| 2. Battery  | 9. HMI screen  |
| 3. Adapter cover for the battery  | 10. Carrying ring  |
| 4. Battery locking clip   | 11. Round handle   |
| 5. Safety throttle: prevents the inadvertent activation of the control trigger; the safety throttle must be activated prior to activating the control trigger | 12. Round handle clamping screw  |
| 6. Control trigger (power switch): used to activate the rotation of the cutting tool at a progressively adjustable speed                                      | 13. Drive shaft  |
| 7. ON/OFF button  | 14. Safety guard TAP CUT 3: limits the projections of solid objects (stones, pieces of metal) towards the operator |
|   | 15. Planetary gear   |
|   | 16. Anti-vegetation protection washer  |
|   | 17. TAP CUT 3 cutting head   |



#### Caution

Before any intervention on the tool, bring the machine to a complete stop. To consult the procedure for switching off your tool, refer to 5.3. Stopping the tool, page 27.

## 3.2. TECHNICAL FEATURES

### 3.2.1. TOOL FEATURES

	EXCELION E
Model	LH
Power	1 200 W
Tool voltage	43.2 V
Weight (including cutting tool, safety guard)	4.9 kg
Weight (with 400E battery)	7.4 kg
Dimensions (l x w x h)	1,835 x 395 x 355 mm
Rotation speeds	5 400 rpm
Tangential speed	130 m/s
Battery life (with 400E battery)	30 minutes to 2 hours
Compatible batteries	400 E (ref. 57334)
Compatible chargers	CB 5060HV (ref. 57335)

### 3.2.2. FEATURES OF THE CUTTING HEAD PROVIDED

Head type	Semi-automatic wired head
Model	Tap Cut 3
Ø wire	2.0 mm (as standard)

### 3.2.3. VIBRATION AND NOISE EMISSION VALUES

The determination of noise levels and vibration rates is based on operating conditions at maximum rated speed according to a standardised test method. It can be used to compare two machines.

#### Sound pressure values

Maximum sound pressure level at the user's position (Uncertainty $K_{pA}$ : 3 dB (A))	$L_{pa} = 79.9 \text{ dB (A)}$
---	--------------------------------

#### Sound power values

Measured sound power level $L_{WA}$ (uncertainty $K_{WA}$ : 0.9 dB(A))	94.4 dB(A)
Guaranteed sound power level $L_{WA,g}$	95 dB(A)

*The measured sound power level and the guaranteed sound power level were measured on a grass trimmer fitted with a TAP CUT 3 with a Ø 2.0 mm wire.*

*The measured sound power level and the guaranteed sound power level were measured according to a procedure in accordance with Directive 2000/14/EC Annex V.*

#### Vibration values measured at maximum rated speed\*

Higher value for main handle and front handle $a_h$ (uncertainty $K_{WA}$ : 1,5 m/s <sup>2</sup> )	2.39
--	------



## Caution

Vibrations during actual working use of the machine may differ from the total declared value, depending on the way the machine is used

It is necessary to identify safety measures to protect the operator, based on an estimate of exposure under actual operating conditions (taking into account all parts of the operating cycle, such as the time the machine is switched off and the time it is idling, in addition to the working time).

## 4. START-UP



### Caution

Before any intervention on the tool, bring the machine to a complete stop. To consult the procedure for switching off your tool, refer to 5.3. Stopping the tool, page 27.

### 4.1. PACKAGE CONTENTS

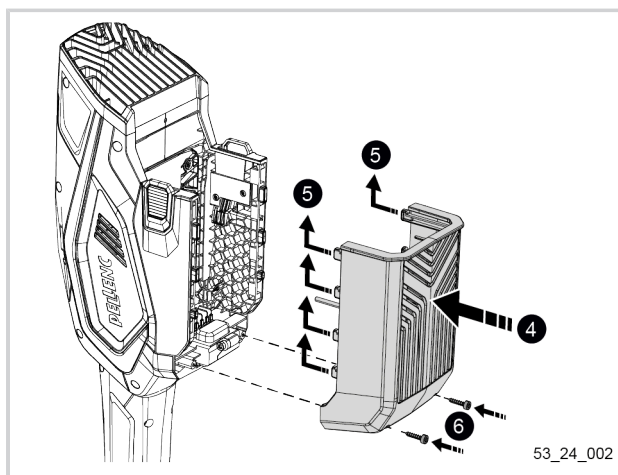
Check that the Grass trimmer Excelion E LH is delivered with:

- 1 TAP CUT 3 cutting head
- 1 safety guard
- 1 carrying strap
- 1 adapter cover for the 400E battery
- 1 operating instruction manual

### 4.2. ASSEMBLY/DISASSEMBLY THE BATTERY ADAPTER COVERS

#### 4.2.1. ASSEMBLY OF THE ADAPTER COVER FOR THE 400 E BATTERY

1. Position the adapter cover for the 400 E battery.
2. Slide the 400 E battery adapter cover upwards to engage the hooks.
3. Tighten the two Torx screws to secure the 400 E battery adapter cover.

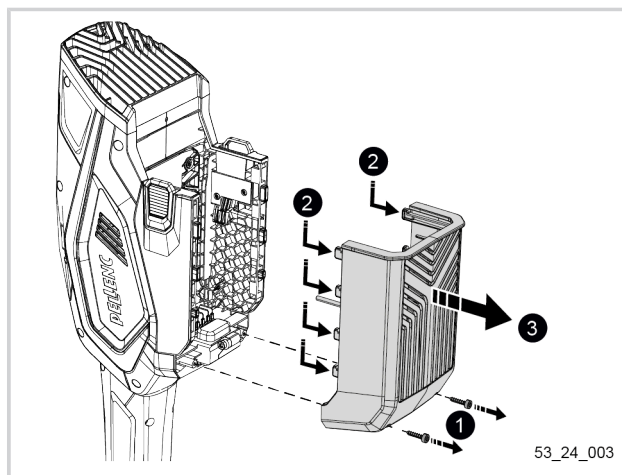


53\_24\_002



#### 4.2.2. DISASSEMBLY OF THE ADAPTER COVER FOR THE 400 E BATTERY

1. Loosen and remove the two Torx screws.
2. Slide the 400 E battery adapter cover downwards to release the hooks.
3. Remove the 400 E battery adapter cover.



#### 4.3. FITTING/DISMOUNTING THE ROUND HANDLE ON THE GRASS TRIMMER

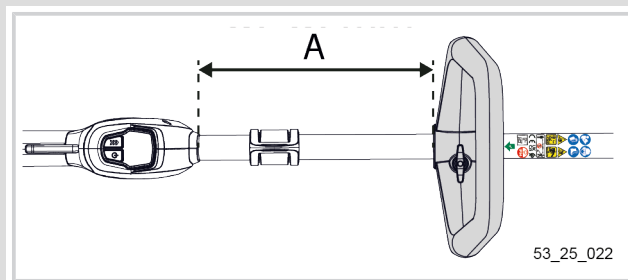
##### 4.3.1. FITTING THE ROUND HANDLE

### Warning

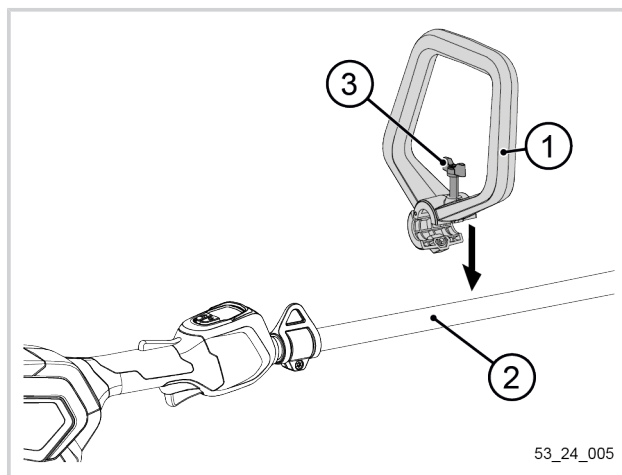
To guarantee the safety of the user, it is necessary to respect a distance (A) between the top of the HMI screen and the top of the distancing bar, varies depending on the cutting tool.



Maximum distance (A) to be respected
250 mm



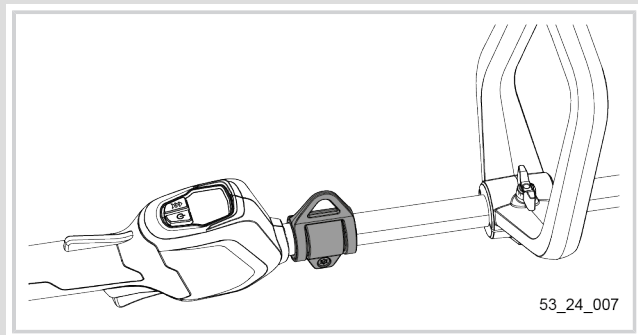
1. Carefully remove the tool from its packing box. Lay the tool on a flat, stable and clean surface.
2. Install the round handle (1) on the transmission tube (2) at the recommended distance. Ensure the correct orientation of the round handle.
3. Lock the position of the round handle (1) by screwing in the adjustment knob (3).



## Note

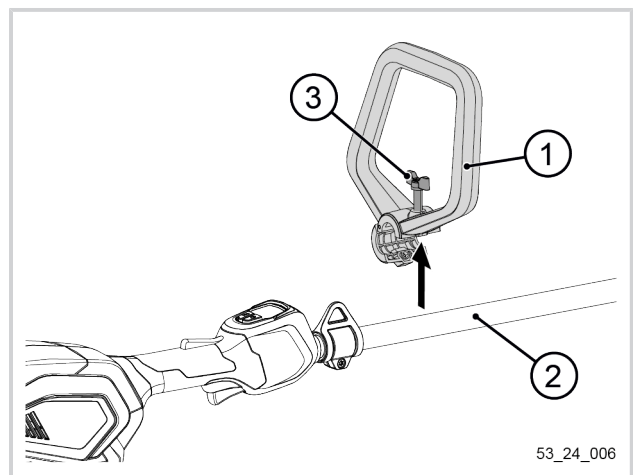
The carrying ring must always be positioned between the two gripping handles of the tool (HMI screen and round handle).

To consult the carrying ring adjustment procedure, refer to 4.8.1. Installing and adjusting the carrying strap, page 23.



### 4.3.2. DISMOUNTING THE ROUND HANDLE

1. Lay the tool on a flat, stable and clean surface.
2. Unscrew the knob (3) located on the round handle (1).
3. Remove the round handle (3) from the transmission tube (2).



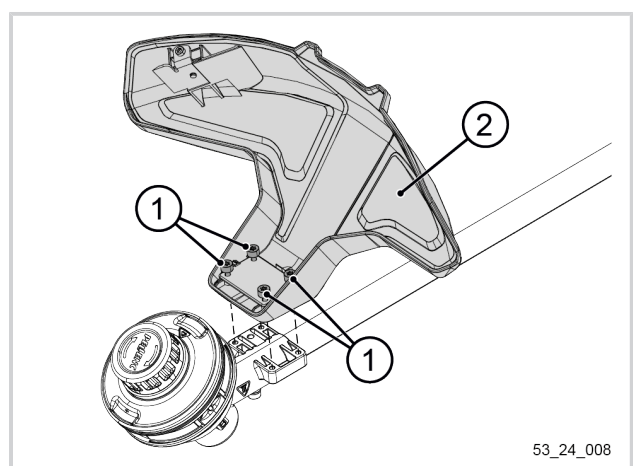
### 4.4. ASSEMBLY/DISASSEMBLY OF THE SAFETY GUARD

#### Important

The safety guard supplied as standard with your tool is mandatory.

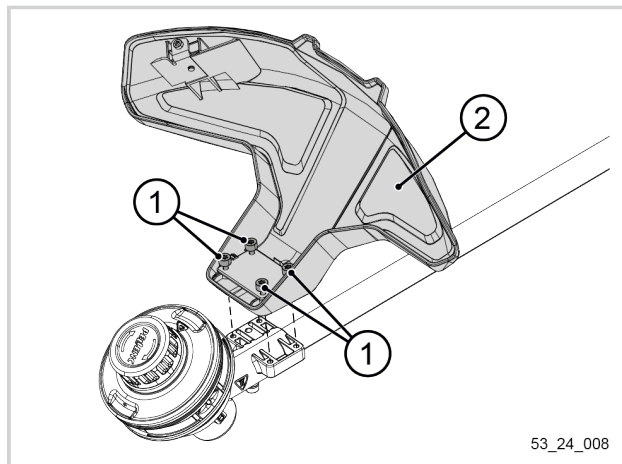
#### 4.4.1. FITTING THE STANDARD SAFETY GUARD

1. Position the safety guard (2) so that the screw markings coincide.
2. Tighten the 4 screws (1)



#### 4.4.2. DISMOUNTING THE STANDARD SAFETY GUARD

1. Unscrew the 4 screws (1) that lock the position of the safety casing (2).
2. Remove the safety casing (2).



#### 4.5. FITTING AND DISMOUNTING OF THE TAP CUT 3

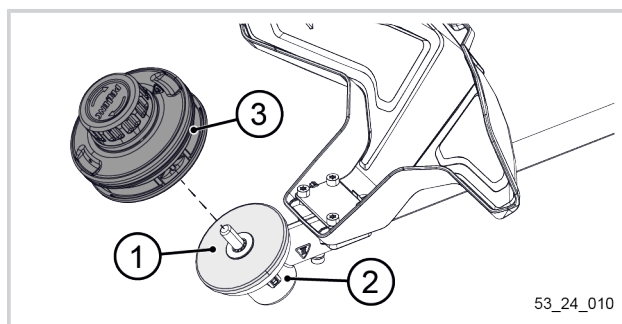


##### Caution

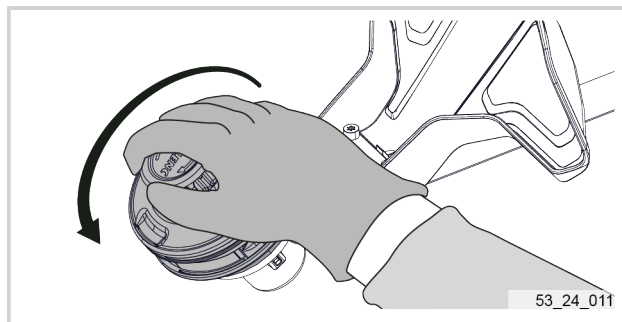
Always disconnect the battery before performing maintenance on the tool.

##### 4.5.1. FITTING THE TAP CUT 3 ONTO THE TOOL

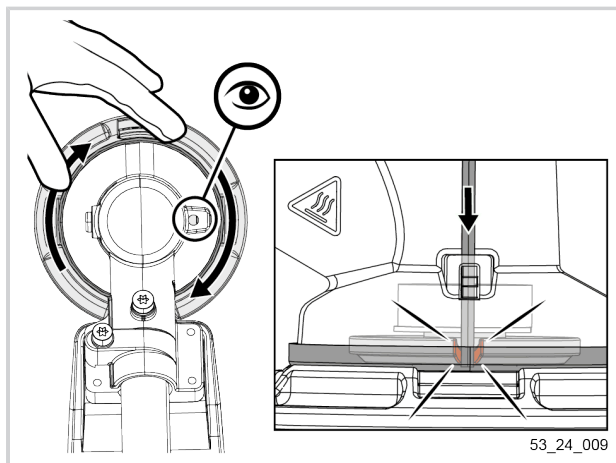
1. Check that the anti-vegetation protection washer (1) is present on the angle gear (2).
2. Fit the TAP CUT (3) on the angle gear (2).



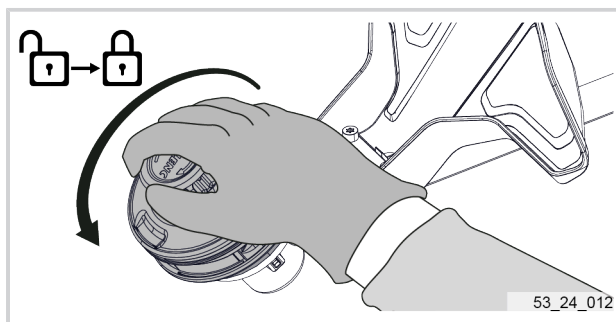
3. Screw the head counterclockwise until in contact with the angle gear.



4. Insert the Torx 25 key into the hole on the angle gear.
5. If necessary, turn the head slightly so that the Torx 25 wrench also fits into the corresponding hole on the cutting head this time.  
This action will allow the position of the motor shaft and the support washer to be locked.



6. Tighten the head counterclockwise to lock the position.



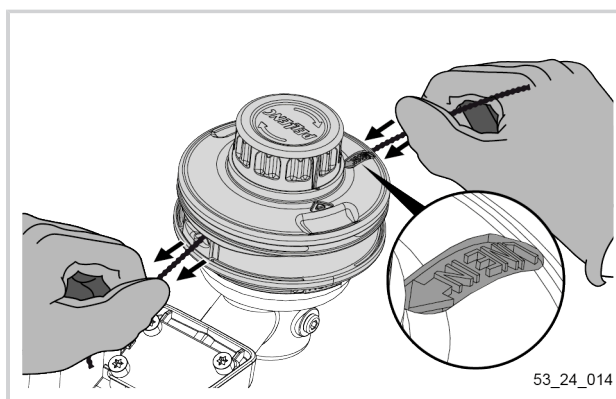
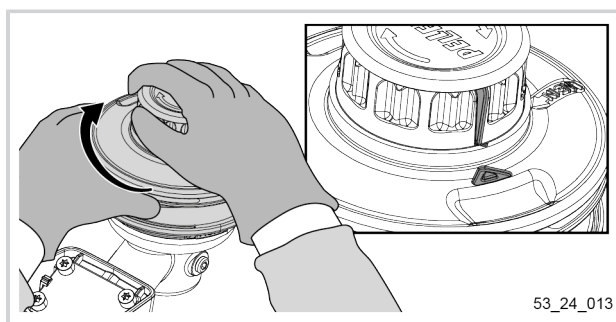
#### 4.5.2. FITTING A STRIMMER WIRE

The TAP CUT 3 wire refill system that allows it to be refilled with trimmer wire without having to open the head.

1. Turn the central part so as to align the arrows on the outer part with the lines on the central part.
2. Cut a length of trimmer wire.
3. Identify the direction of insertion of the trimmer wire using the "LINE IN ►" marker.
4. Insert the trimmer wire into the marker eyelet and feed the wire through the TAP CUT.

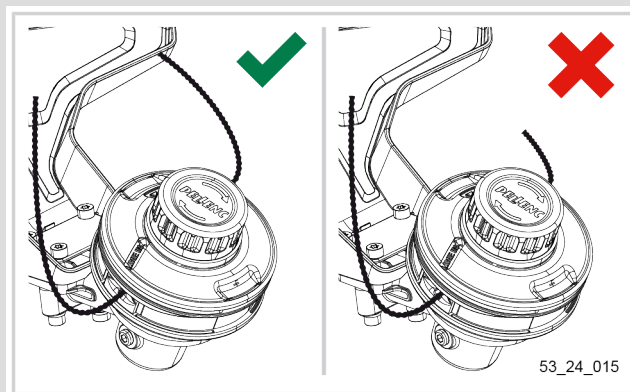
#### Note

To make it easier to insert the trimmer wire through the eyelets, use both hands to slacken the trimmer wire. This will make the trimmer wire stiffer and straighter.



## Note

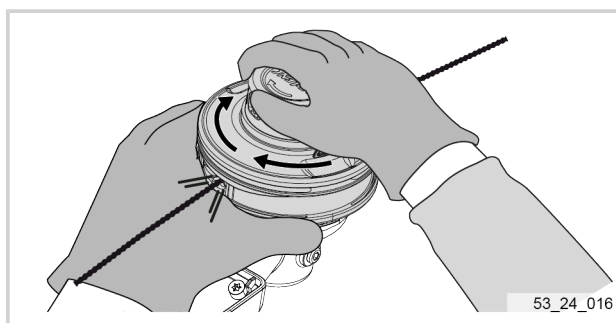
The trimmer wire should be the same length on both sides of the cutting head.



5. Screw in the middle part so that the wire enters the cutting head and becomes less and less apparent.

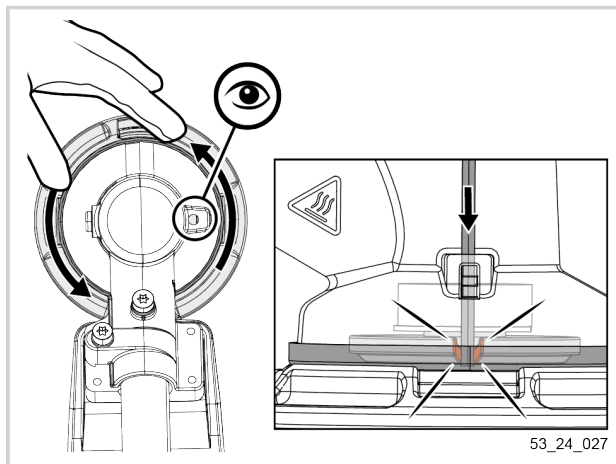
## Note

The length of the trimmer wire must be sufficient for the blade on the safety guard to cut it.

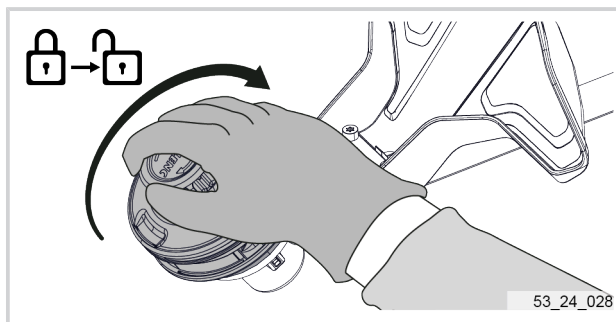


### 4.5.3. DISMOUNTING THE TAP CUT 3 FROM THE TOOL

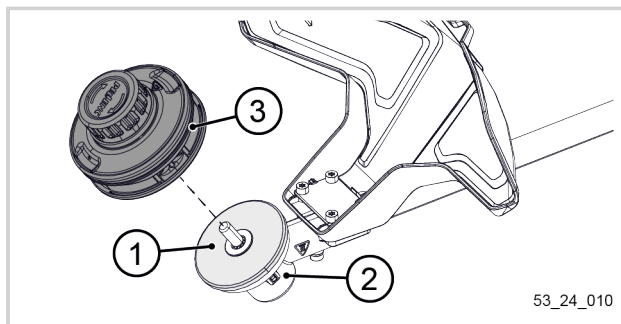
1. Insert the Torx 25 key into the hole on the angle gear.
2. If necessary, turn the head slightly so that the Torx 25 key also fits into the corresponding hole on the cutting head.  
This action will allow the position of the motor shaft and the support washer to be unlocked.



3. Turn the head clockwise to unlock the position.
4. Unscrew the head.



5. Remove the TAP CUT (3) from the angle gear (2).
6. Take care not to lose the anti-vegetation protection washer (1).



#### 4.6. CONNECTING THE E BATTERIES TO THE TOOL

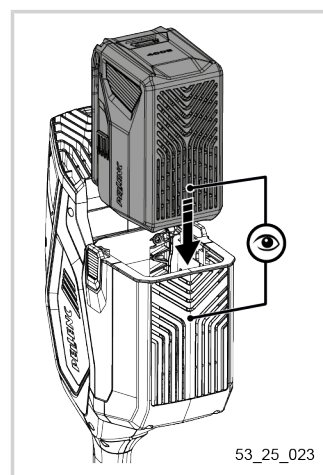
##### Important

- Always check the remaining battery life before use. If necessary, recharge the battery using the charger.
- Observe the recommended ambient temperature range for the charging system while charging the battery. It is recommended to charge the battery at a temperature between 5°C (41°F) and +45°C (113°F).
- When charging, always follow the battery charging instructions described in the battery and charger instruction manuals.
- To prolong the life of the connectors, they should be protected when disconnected. It is therefore important to avoid putting them in contact with abrasive or dirty surfaces, or subjecting them to significant impacts (falls).
- For more information on PELENC batteries, see the battery operating instruction manuals.

##### Important

Check that there are no foreign bodies in the connection area between the tool and the battery.

1. Check that the battery adapter cover is installed on the tool.  
If not:
  - See 4.2.1. Assembly of the adapter cover for the 400 E battery, page 16 to install a 400E battery.
2. Locate the battery's ventilation grille and the tool's ventilation grille.
3. Position the battery so that the two grilles coincide.

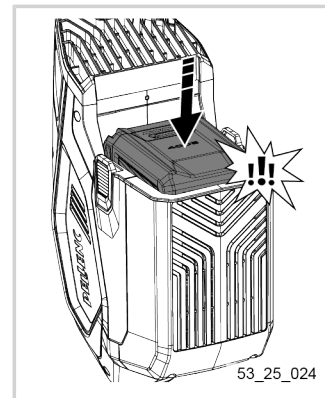


4. Install the battery until the locking clips snap into place.



### Warning

The lock prevents unintentional disconnection. Do not start the tool without checking that the clip is locked.



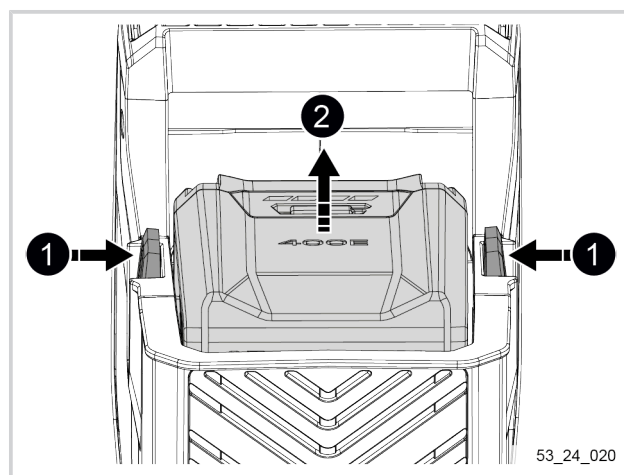
## 4.7. DISCONNECTING THE E BATTERY FROM THE TOOL

### Important

To prolong the life of the connectors, they should be protected when disconnected. It is therefore important to avoid putting them in contact with abrasive or dirty surfaces, or subjecting them to significant impacts (falls).

For more information on PELLENC batteries, see the battery operating instruction manuals.

1. Press and hold open the two battery locking clips.
2. Remove the battery.



## 4.8. ADJUSTING THE WORKING POSITION

### Before any use:

- The working position must be adjusted according to the size of the operator.
- It should allow easy use requiring little effort.
- The user should not work with arms stretched or completely bent.
- The cutting head should be close to the ground.

### 4.8.1. INSTALLING AND ADJUSTING THE CARRYING STRAP

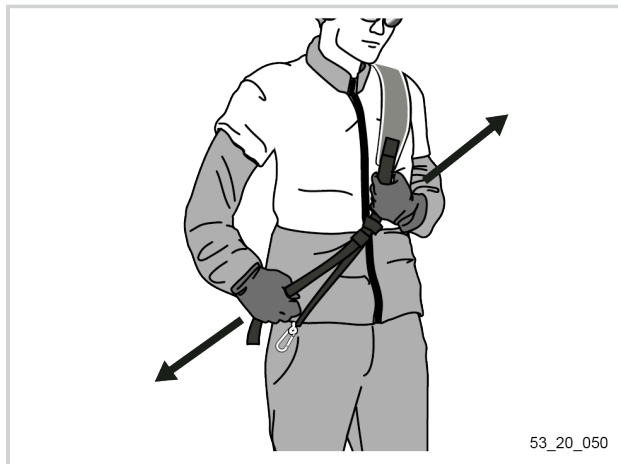
### Important

Take the time to properly adjust your carrying strap and machine. This will guarantee your ease of use and prevent any discomfort.



Adjusting the length of the carrying strap makes it possible to adjust the "vertical position" of the Grass trimmer Excelion E LH . This adjustment goes hand in hand with the adjustment of the balancing of the machine and the adjustment of the round handle.

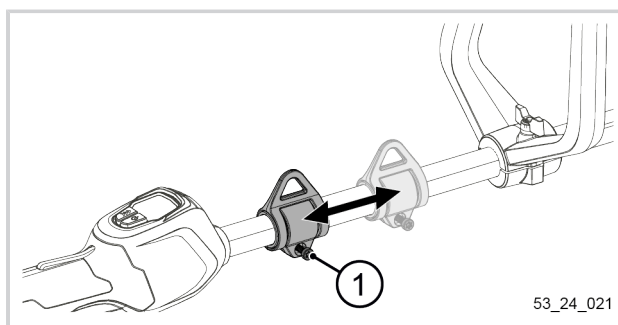
1. Put on the carrying strap.
2. Adjust the length.



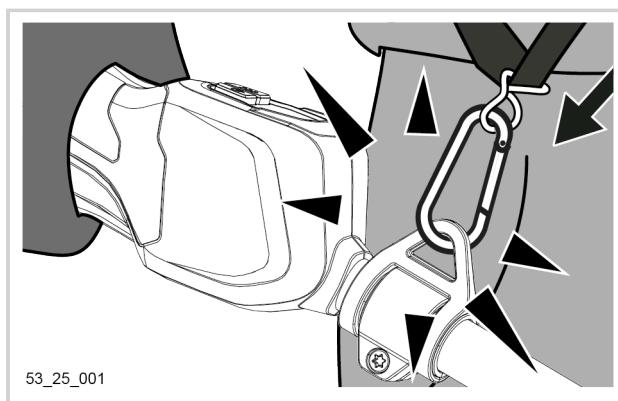
3. Pass the self-attaching fastener end of the strap under the main carrying strap.
4. Fold the self-attaching fastener over the main strap.



5. Unscrew the screw located on the carrying ring (1).
6. Slide the carrier ring over the transmission shaft. Choose a position which allows you to obtain the best balance of the tool (weight distribution between front and rear and machine balanced horizontally).
7. Tighten the screw located on the carrying ring (1).



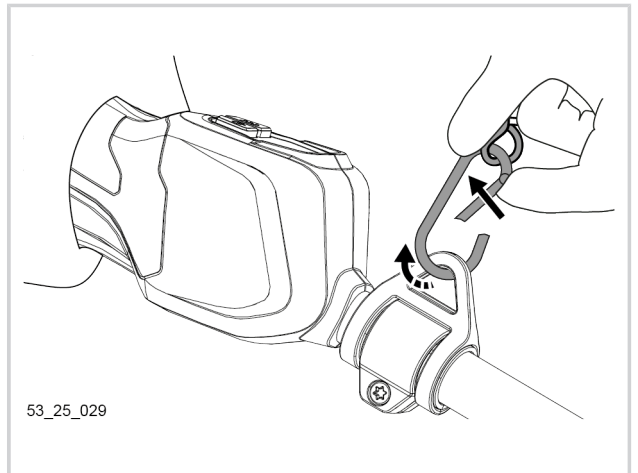
8. Hook the carrying strap on the tool carrying eyelet.





#### 4.8.2. REMOVING THE CARRYING STRAP

1. Open the snap hook and detach the tool.



2. Remove the carrying strap.



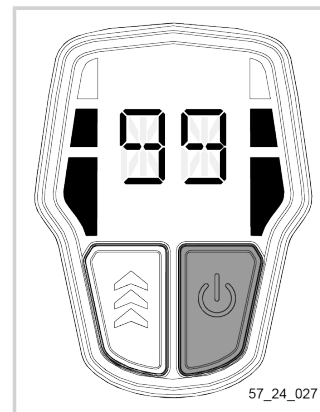
## 5. USE

### Note

- Observe the ambient temperature range for storing the battery and its charger. It is recommended to use the tool at a temperature between **-5°C (23°F) and +35°C (95°F)**.
- Observe the recommended ambient temperature range for the charging system while charging the battery. It is recommended to charge the battery at a temperature between 5°C (41°F) and +45°C (113°F).
- When charging, always follow the battery charging instructions described in the battery and charger instruction manuals.

## 5.1. SWITCHING ON THE TOOL

1. Connect the battery. See 4.6. Connecting the E batteries to the tool, page 22.
2. Switch on the tool by holding down the on/off button for over a second. The HMI comes on.



## 5.2. UNLOCKING AND STARTING THE TOOL

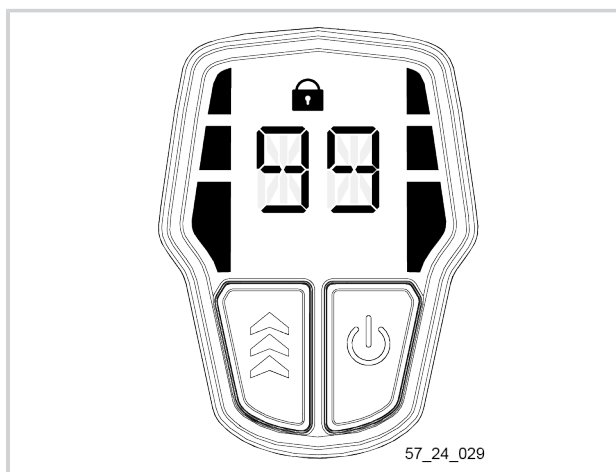
On start-up, the tool is locked-out (a padlock appears on the HMI screen). This is to prevent accidental start-up.

1. Make sure to release the 2 triggers.
2. If this is not the case, release the triggers and restart the tool.
3. Hold the safety trigger (2) and double-click the actuation trigger (1) to unlock the tool.

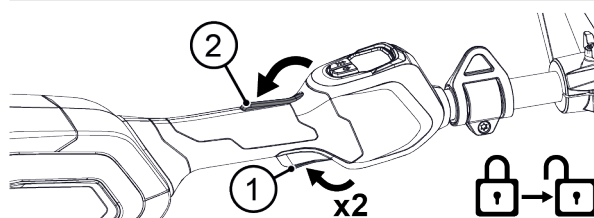
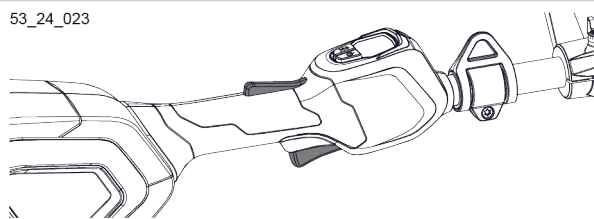
### Important

When the tool is unlocked, the user has 5 seconds to perform an action. If the user does not take any action within 5 seconds, the tool will lock again.

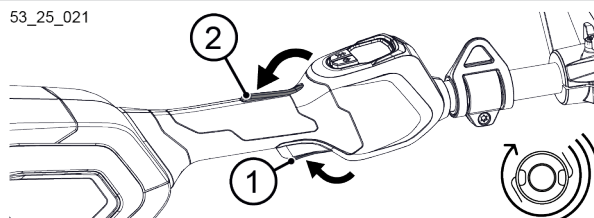
4. Press the operating trigger (1) again while holding the safety trigger (2) to start the tool.



53\_24\_023

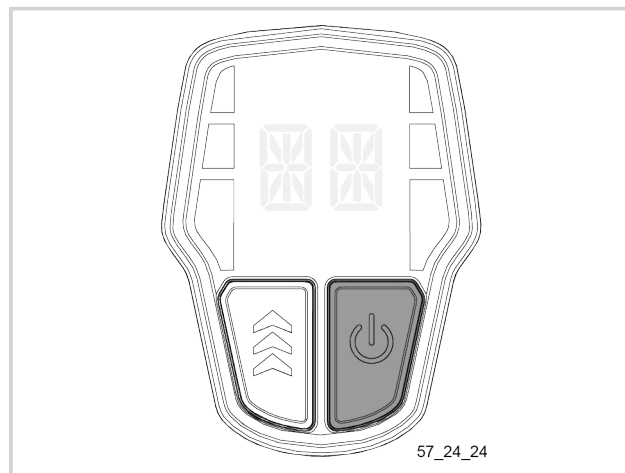


53\_25\_021



### 5.3. STOPPING THE TOOL

1. Release the triggers to stop the cutting.
2. Switch off the tool by holding down the on/off button for over a second.
3. If necessary, disconnect the battery. See 4.7. Disconnecting the E battery from the tool, page 23.



### 5.4. SELECTING WORKING SPEED

Your tool is equipped with a speed change system. This system allows you to optimise and vary the cutting power using the selector (2) on the handle.

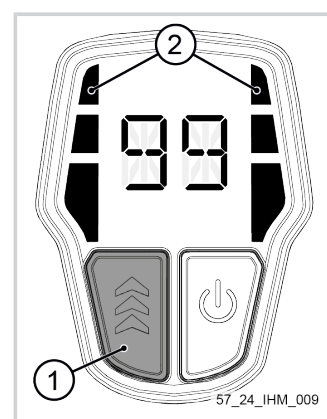
When the tool is powered up, the speed LEDs in the HMI (3) indicate the selected speed.

#### Note

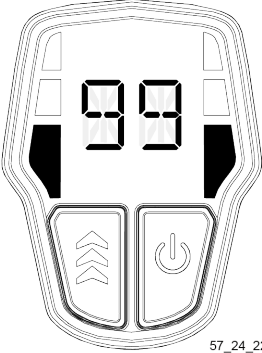
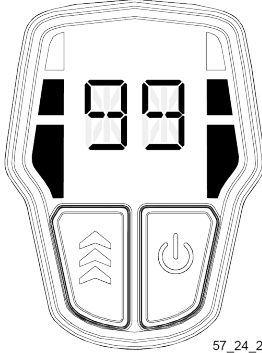
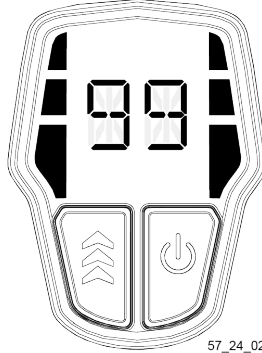
- The tool starts at speed 2 (intermediate speed).
- When changing speed it executes a 2→3→1→2 speeds cycle.
- As the tool heats up, it automatically reduces speed.

#### To change speed:

1. Press the speed and mode selection button (1) briefly. The speed LEDs (2) on the HMI increment.
2. Repeat the operation until the desired speed is reached.



## Description of speeds:

Selected speed	1	2	3
LED status			
Cutting speed (rpm)	3 700	4 700	5 400
Battery life with the 400 E battery (mins)	120	60	30

## 5.5. TIPS FOR USE AND WORKING TECHNIQUES

### 5.5.1. ADVICE FOR OPTIMIZING THE BATTERY

In order to optimize the autonomy of your PELLENC battery as much as possible, the rotational speed of the cutting tool used must be adapted to the type of mowing/trimming work to be carried out.

This is because the higher the rotational speed of the cutting tool, the greater the energy consumption. Therefore the progressive nature of the control trigger must be used to adjust the rotational speed of the cutting tool.

Type of vegetation or work	Recommended cutting tool	Recommended tool speed
Borders / Lawn	TAP CUT 3 + Strimmer wire Ø 2.0 mm	V1
Edges	TAP CUT 3 + Strimmer wire Ø 2.0 mm	V1
Lawn	TAP CUT 3 + Strimmer wire Ø 2.0 mm	V1
Grass	TAP CUT 3 + Strimmer wire Ø 2.0 mm	V2
Tall, dense grass	TAP CUT 3 + Strimmer wire Ø 2.0 mm	S3

### 5.5.2. TIPS ON USE AND MOWING TECHNIQUES

- Before starting mowing/trimming, examine the surface to be cleared: nature of the surface, area, relief, presence of obstacles, etc.
- Note the wind direction. The latter may facilitate the removal of clippings and make the task of the user easier.

## Important

Always keep a minimum distance of 50 mm between the cutting head and the obstacle in order to avoid any risk of damage to the tool and the "strands" (of strimmer wire).

**5.5.2.1. SIMPLE MOWING**

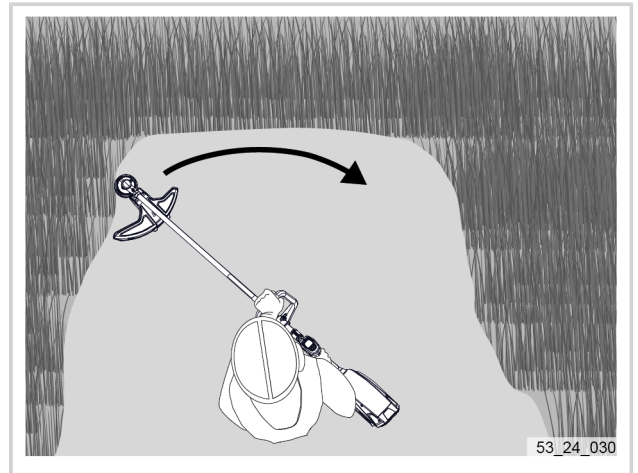
Define a strip that covers the width of the work area.

**Movement to be performed**

- Move the tool in semi-circles from left to right while gradually advancing.
- Keep the cutting head parallel to the ground.
- Do not put the cutting head in contact with the ground.

**Direction of progression**

- The operator should always walk forward.

**5.5.2.2. TALL GRASS MOWING**

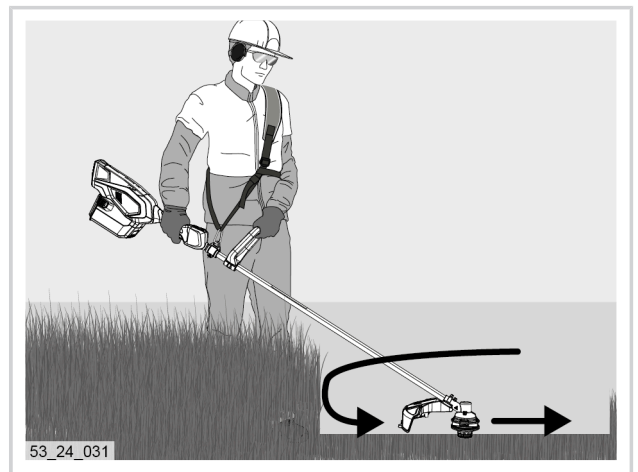
Define a strip that covers the width of the work area.

**Movement to be performed**

- To mow tall, dense grass, mow the upper part first, then the lower part.
- The mowing movement is from right to left while left to right is the return movement.
- Mowing in one direction only helps with the disposal of cut grass.

**Direction of progression**

- The operator should always walk forward.



### 5.5.2.3. MOWING ON SLOPES

#### Important

Before starting to mow on a slope, make sure you are stable on the ground.

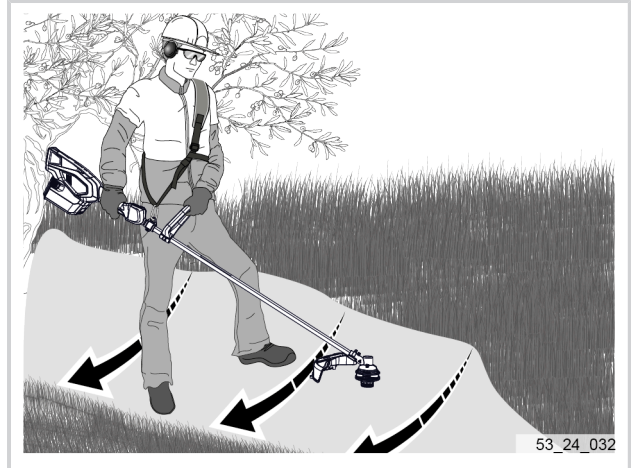
1. Position yourself at the base of the slope.
2. Define a strip parallel to the slope that spans the width of the work area.

#### Movement to be performed

- Work with the tool from higher to lower ground on slopes.
- The cut grass will fall towards the downside.
- This will prevent the cutting head from rotating in grass that has already been cut.
- Do not put the cutting head in contact with the ground.

#### Direction of progression

- The operator must always walk forward, following the strip defined at the start of the work.
- When said strip is finished, the user must retrace his steps and start a new strip slightly higher than the one which has just been completed.



### 5.5.2.4. MOWING ALONG WALLS, FENCES, AROUND TREES AND FLOWER BEDS

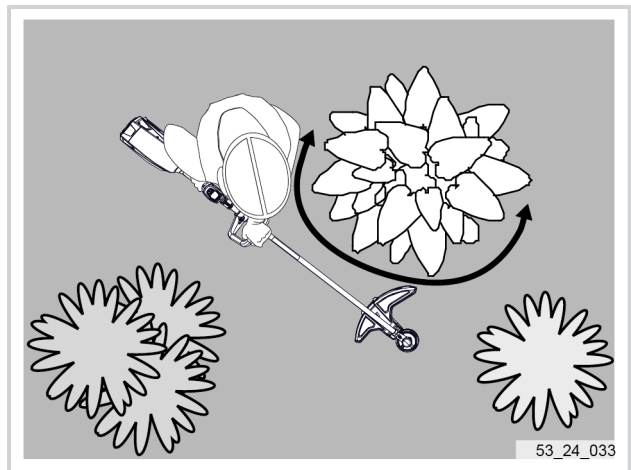
- Protect bark and the edge of flower beds by using the safety guard as a shield between the surface area to be cleared and the vegetation to be protected.

#### Movement to be performed

- Move the tool in semi-circle arcs from left to right.
- Keep the cutting head parallel to the ground.
- Do not allow the cutting head to touch the ground.

#### Direction of progression

- The operator should always walk forward.



## 6. SERVICE

### 6.1. MAINTENANCE ADVICE



#### Caution

Always disconnect the tool battery before starting tool maintenance.

- Use products recommended by PELLEC.
- In the event of any problems, consult an authorised PELLEC distributor.

### 6.2. MAINTENANCE TABLE

#### Maintenance schedule

Operations	Frequency of operations				
	Before each use and every 2 hours	After use	Every month	Every year	If necessary
Visually check the general condition of the tool. See 6.3.2. Visual check of the general condition of the tool, page 32.	X				
Check the operation of the operating trigger. See 6.3.3. Checking the triggers, page 32.	X				
Clean the tool. See 6.4. Cleaning, page 32.		X			
Grease the angle gear. See 6.5.1. Angle gear lubrication, page 34.			X		
Grease the motor reducer. See 6.5.2. Greasing of the motor reducer, page 34.			X		
Have the tool inspected by an authorised distributor. PELLEC. See 6.3.1. Annual overhaul, page 31.				X	X
Check the battery.	Refer to the battery operating instruction manual.				

### 6.3. CHECK

#### 6.3.1. ANNUAL OVERHAUL

#### Important

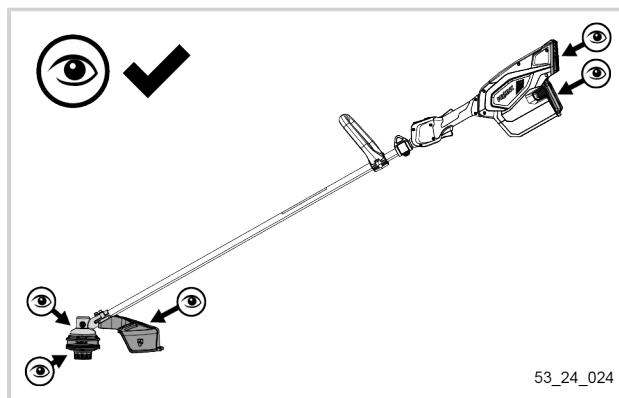


Have the machine serviced every 500 hours or at least once a year by an authorised distributor. PELLEC.

### 6.3.2. VISUAL CHECK OF THE GENERAL CONDITION OF THE TOOL

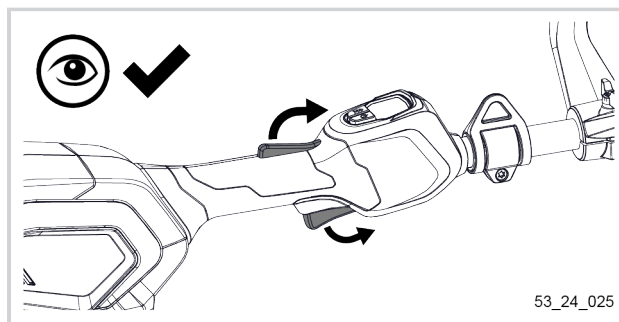
1. Check the general condition of the tool.\*
2. Check the battery charge level. Recharge if necessary.
3. Check the cutting head at the shaft attachment (check for deformation or wear).\*
4. Check the condition of machine's safety devices (carrying plate, safety guard, angle gear).\*
5. Check the condition of the air exhaust and air intake grilles.\*
6. Check that the air exhaust and air intake grilles are not obstructed.

\* If any part appears damaged, have it replaced by an authorised PELLENC distributor.



### 6.3.3. CHECKING THE TRIGGERS

1. Visually check the condition of the triggers.
2. Ensure that nothing physical (e.g. tape, collar, etc.) prevents or interferes with the operation of the triggers.
3. Press on the triggers to make sure they are operating properly.



## 6.4. CLEANING

### Important

Energy consumption varies depending on the state of cleanliness of the tool.

### 6.4.1. CLEANING THE TOOL

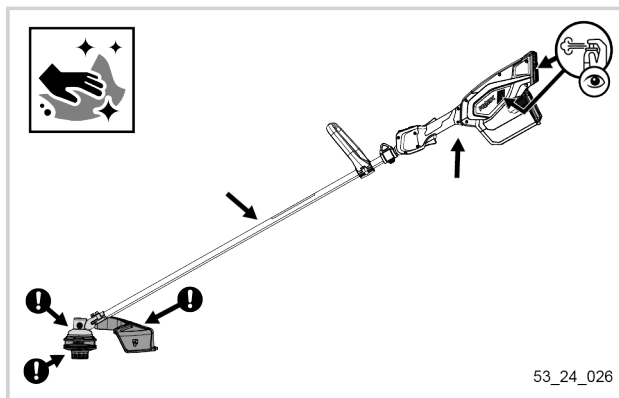


### Warning

Ⓢ Never use solvents ( trichloroethylene, white spirit, petrol, etc.) to clean the tool.  
Do not use a high pressure cleaner.



1. Clean the surface of the tool with a soft, damp cloth.
2. Clean the safety casing.  
If necessary remove the safety guard (see 4.4. Assembly/disassembly of the safety guard, page 18)
3. Clean the cutting head.  
If necessary, remove the cutting head (see 4.5.3. Dismounting the TAP CUT 3 from the tool, page 21).
4. Using an air compressor (10 bar maximum), blow out the tool, the grille and the rotor to limit clogging.
5. Check that the holes in the air exhaust grille and the air intake grille are not obstructed.



53\_24\_026

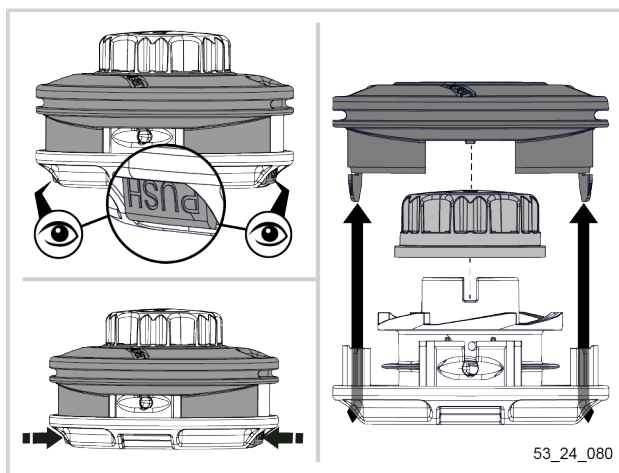
## Important

After cleaning, allow the tool to dry thoroughly before using it.

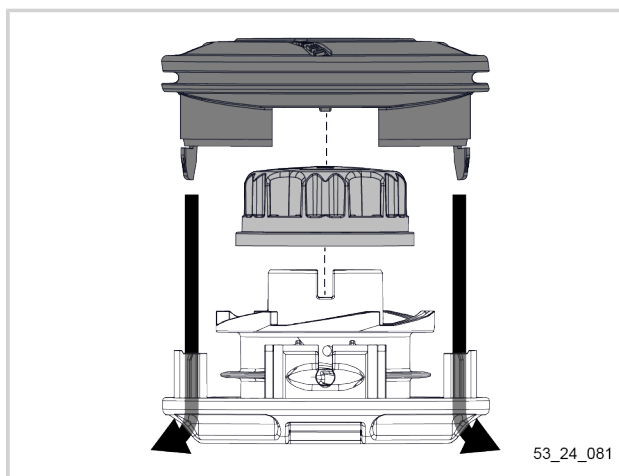
### 6.4.2. CLEANING THE TAP CUT 3

The TAP CUT 3 cutting head may need to be cleaned after numerous uses.

1. Simultaneously press the two notches on either side of the TAP CUT 3.
2. Remove the cover and the central part of the TAP CUT 3.
3. Clean the inside of the cutting head to remove any grass or strimmer wire residue that may prevent the tool from working properly.
4. After cleaning the inside of the head, put the central part back in position.
5. Replace the head cover, making sure to line up the notches.



53\_24\_080



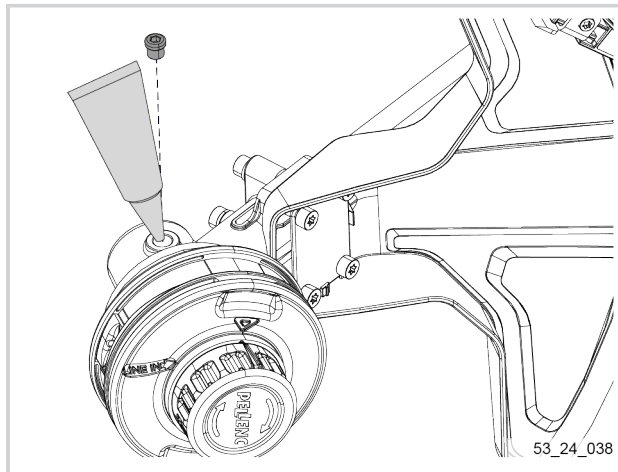
53\_24\_081

## 6.5. GREASING

### 6.5.1. ANGLE GEAR LUBRICATION

**Frequency** Once a month or every 100 hours  
**Grease** Pellenc PELLENC (ref. 35749)

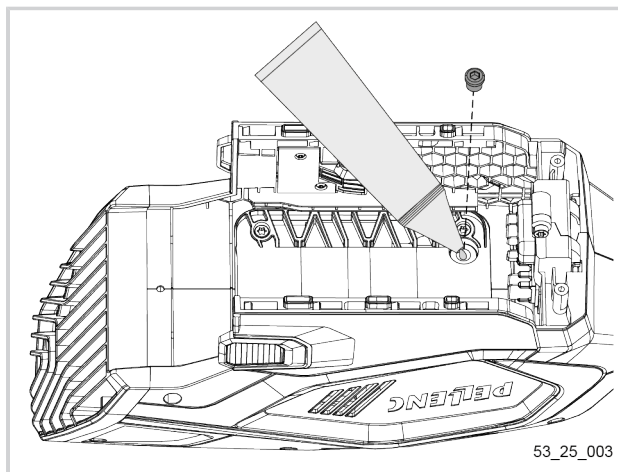
1. Loosen and remove the screw on the angle gear.  
✗ Torx 25 wrench supplied with the tool.
2. Apply 4 grams of grease.
3. Insert and tighten the screw located on the angle gear.  
✗ Torx 25 wrench supplied with the tool.



### 6.5.2. GREASING OF THE MOTOR REDUCER

**Frequency** Once a month or every 100 hours  
**Grease** Pellenc PELLENC (ref. 35749)

1. Remove the adapter cover.
2. Remove the motor gearbox screw.  
✗ Torx 25 wrench supplied with the tool.
3. Apply 4 grams of grease.
4. Insert the motor gearbox screw and tighten.  
✗ Torx 25 wrench supplied with the tool.

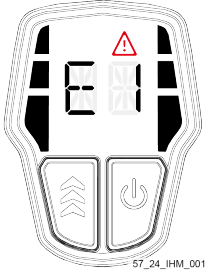
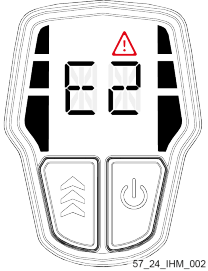
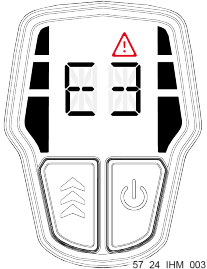
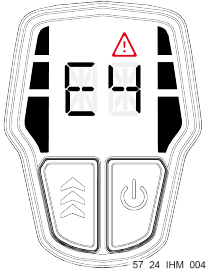
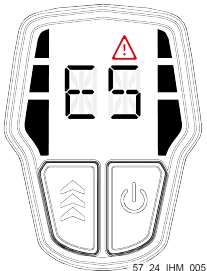
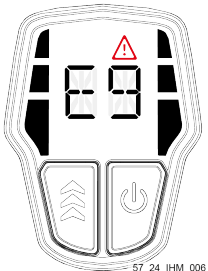
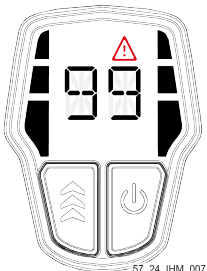


## 7. INCIDENTS AND TROUBLESHOOTING

### Important

For any problems relating to the battery, please refer to the battery operating instruction manual. **PELLENC recommends contacting an authorised distributor PELLENC in all cases of breakdown.**

### Error code description:

Fault	Probable cause	Fault	Probable cause
 57_24_IHM_001	Overcurrent tool	 57_24_IHM_002	Shutdown due to low battery voltage
 57_24_IHM_003	Communication problem with the battery (or battery not recognized)	 57_24_IHM_004	Shutdown due to high temperature
 57_24_IHM_005	Communication problem with the HMI	 57_24_IHM_006	Operating trigger problem
 57_24_IHM_007	High tool temperature or Low battery voltage Safety trigger operated before starting		

### Note

Most issues can be resolved by restarting the tool.

**Symptoms of the Grass trimmer Excelion E LH :**

Symptoms	Probable cause	Solutions	Repairer
<b>The tool does not start.</b>	The on/off button was not pressed hard enough to switch the tool on.	Press the on/off button until the tool starts up.	User
	The battery is not properly connected.	Check that the battery is properly connected. If necessary: remove and reinstall the battery until you hear the locking clips snap into place.	User
	The battery is flat.	Check that the battery is not fully discharged. If necessary: recharge the battery.	User
	The temperature of the tool is above 90°C.	Give the tool time to cool.	User
<b>The tool is switched on but will not start.</b>	The tool is locked.	Unlock the tool.	User
	Trigger no longer works.	Change the trigger.	Authorized distributor PELLENC
<b>The tool reduces its operating speed.</b>	The tool was at speed 3 and its temperature rose above 94°C.	Continue the work at speed 2 or wait for the tool to cool down.	User
	The tool was at speed 2 and its temperature rose above 97°C.	Continue the work at speed 1 or wait for the tool to cool down.	User
<b>The tool will not change to speed 3.</b>	The tool has reached its temperature limit.	Continue the work at speed 2 or wait for the tool to cool down.	User
<b>The tool will not change to speed 2.</b>	The tool has reached its temperature limit.	Continue the work at speed 1 or wait for the tool to cool down.	User
<b>The tool stops during use.</b>	The trigger no longer works.	Change the trigger.	Authorized distributor PELLENC
	The tool is inactive for more than a minute.	Switch the tool on again.	User
	The tool has reached its temperature limit.	Give the tool time to cool.	User
	The battery is flat.	Recharge the battery (if less than 10% charged).	User
<b>The tool makes an unusual noise or vibrates abnormally.</b>	Cutting head damaged	Check the condition of the cutting head. If necessary, replace the cutting head.	User
	Damaged cutting head retaining element	Check the condition of the cutting head retaining element. If necessary: have the cutting head retaining element changed.	Authorized distributor PELLENC
	Motor shaft damaged	Check the condition of the motor shaft. If necessary: change the motor shaft	Authorized distributor PELLENC

## 8. STORAGE AND TRANSPORT

### 8.1. TRANSPORTING THE TOOL

#### **Important**

Never carry the machine or the battery by the power cord.

- Switch off the tool. See 5.3. Stopping the tool, page 27.
- Disconnect the battery. See 4.7. Disconnecting the E battery from the tool, page 23.
- Ensure that the tool and battery are packed and properly secured in the transport vehicle.

### 8.2. TEMPORARY STORAGE

1. Switch off the tool. See 5.3. Stopping the tool, page 27.
2. Disconnect the battery. See 4.7. Disconnecting the E battery from the tool, page 23.
3. If stored at the end of the day, carry out daily maintenance operations.
4. Store the tool in a safe place, out of reach of children and unauthorized persons.
5. When storing the battery, refer to the battery's operating instruction manual.

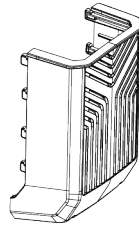
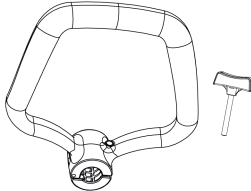
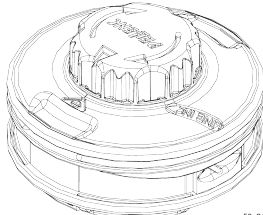
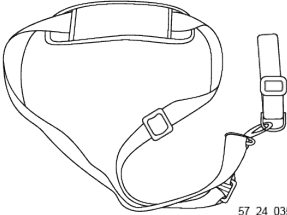
### 8.3. STORING THE TOOL

#### **Important**

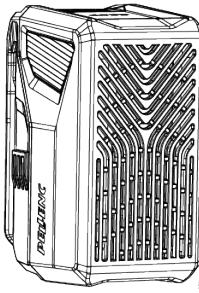
- In the event of prolonged storage, grease the output shaft of the angle gear (refer to 6.5. Greasing, page 34).
- Always store the tool clean and make sure the battery is adequately charged (refer to the battery operating instruction manual).
- The Grass trimmer Excelion E LH must be stored away from heat, dust and humidity at an ambient temperature of between 10°C and 35°C.
- The tool and the battery must be stored in their original packaging, in a dry place and out of the reach of children.


## 9. ACCESSORIES AND CONSUMABLES

### 9.1. ACCESSORIES INCLUDED

Name	Reference	
Adapter cover for 400 E battery		 57_24_033
Round handle		 53_20_282
TAP CUT 3 cutting head (See 9.3. TAP CUT trimmer wire, page 39 to consult the list of trimmer wires compatible with the TAP CUT 3)	57276	 53_21_276
Carrying strap	133937	 57_24_035

### 9.2. OPTIONAL ACCESSORIES

Name	Reference	
400 E battery	57334	 57_24_032

Name	Reference	
Protective storage bag		

53\_20\_001

### 9.3. TAP CUT STRIMMER WIRE

Designation	Diameter	Length +/- 1%	Reference
Strimmer wire spool shell	Ø 2.0 mm	- m	

## 10. WARRANTIES

### 10.1. GENERAL WARRANTIES

#### 10.1.1. STATUTORY WARRANTY

##### 10.1.1.1. LATENT DEFECTS WARRANTY

Apart from the commercial warranty provided for under Article II, Article 1641 of the French Civil Code states that "the seller is bound to a warranty on account of latent defects of the object sold which render it unfit for the use for which it was intended, or which would impair said use to the extent that the buyer would not have acquired it, or would only have paid a lesser price for it, had he/she known of them".

Article 1648 of the Civil Code "The action resulting from latent defects must be brought by the purchaser within two years after the discovery of the defect. »

##### 10.1.1.2. LEGAL GUARANTEE OF CONFORMITY

Article L.217-4 of the French Consumer Code "The seller delivers goods in compliance with the contract and is liable for defects of conformity existing upon delivery.

The seller is also liable for any lack of conformity resulting from the packaging, assembly or installation instructions whenever its contractual liability is engaged in this regard or the latter are carried out under its responsibility.

Article L.217-5 of the French Consumer Code "Goods are compliant with the contract":

- If they are fit for the purpose normally expected of similar goods and, where applicable:
  - If they correspond to the description given by the seller and possess the qualities that were presented to the buyer in the form of a sample or model;
  - If they possess the qualities that a buyer can reasonably expect given the public statements made by the seller, the producer or its representative, especially in advertising or labelling;
- Or if it has the characteristics defined by mutual agreement between the parties or be suitable for any special use sought by the buyer, brought to the attention of the seller and accepted by the latter.

Article L.217-12 of the French Consumer Code "legal action resulting from lack of conformity lapses two years after delivery of the goods".

The legal guarantee of conformity applies only to consumers, not to professional customers.

## **10.1.2. COMMERCIAL WARRANTY PELLENC**

### **10.1.2.1. CONTENTS**

#### **10.1.2.1.1. GENERAL INFORMATION**

In addition to the legal warranties, user customers benefit from the commercial warranty on products PELLENC covering the exchange and replacement of parts recognised as being out of order, due to machining defects, assembly defects or material defects, whatever the cause.

The warranty forms an inseparable whole with the product sold by PELLENC.

#### **10.1.2.1.2. SPARE PARTS**

The commercial warranty also covers original spare parts PELLENC, excluding labour and to the exclusion of certain spare parts of each product provided upon delivery.

### **10.1.2.2. DURATION OF WARRANTY**

#### **10.1.2.2.1. GENERAL INFORMATION**

Products PELLENC connected to a battery are covered by the commercial warranty from the date of delivery to the user customer for a period of two (2) years PELLENC, associated robotic products are also covered PELLENC and other products are covered for one (1) year PELLENC.

#### **10.1.2.2.2. SPARE PARTS**

Spare parts PELLENC replaced under the product warranty are guaranteed under the commercial warranty from the delivery of the product PELLENC to the user customer for a period of two (2) years in the case of products connected to a battery PELLENC, and for a period of one (1) year in respect of other products PELLENC.

In the case of products connected to a battery PELLENC, spare parts that are replaced under the product warranty after the 12th month of use are covered for a period of one (1) year.

#### **10.1.2.2.3. WARRANTY EXCLUSIONS**

Products that have been subject to abnormal use, or that have been used under conditions and for purposes other than those for which they were manufactured, are excluded from the commercial warranty, especially in the case of non-compliance with the conditions stipulated in this user manual.

Nor does it apply in the event of impact, dropping, negligence, lack of supervision or maintenance or if the product has been transformed. Products that have been altered, transformed or modified by the user customer are also excluded from the warranty.

Wear parts and/or consumables are not covered by the warranty.

### **10.1.2.3. IMPLEMENTATION OF THE COMMERCIAL WARRANTY**

#### **10.1.2.3.1. PRODUCT COMMISSIONING AND COMMISSIONING DECLARATION**

At the time of the sale, the DISTRIBUTOR and/or customer-user undertakes to **complete the online warranty activation form** in full on the Pellenc Service website.



**The warranty must always be activated** by the DISTRIBUTOR in order to demonstrate that it has fulfilled its information obligations towards the Customer. The DISTRIBUTOR may be held liable if the accident was caused by a failure to provide advice on its part.

**Activating the warranty also activates the commercial warranty. Without this, PELLENC will not be able to honour any commercial warranty.** , and the DISTRIBUTOR must therefore bear the financial burden alone without being able to pass on the cost of its intervention under the warranty to the user customer.

### **10.1.3. PAID AFTER-SALES SERVICE**

#### **10.1.3.1. GENERAL INFORMATION**

Malfunctions, breakdowns, breakages resulting from misuse, negligence or improper maintenance by the user customer, as well as malfunctions resulting from the normal wear of the product, are subject to the payment of the after-sales service, even during the period of the legal and commercial warranty. After-sales service repairs that fall outside of the legal and commercial warranty also include maintenance, adjustments, diagnostics of all types, and cleaning, without the present list being exhaustive.

#### **10.1.3.2. WEAR PARTS AND CONSUMABLES**

Wear parts and consumables also fall within the after-sales service.

#### **10.1.3.3. SPARE PARTS**

The paid after-sales service also covers original spare parts PELLENC, excluding labour and outside the legal or commercial warranty period.

In case of replacement of original spare parts PELLENC in the context of the after-sales service, said latter are covered by a commercial warranty of one year as of the installation date.

## 11. STATEMENTS OF COMPLIANCE

### 11.1. DECLARATION OF COMPLIANCE: EXCELION E LH

MANUFACTURER / PERSON AUTHORISED TO COMPILE THE TECHNICAL FILE	PELLENC
ADDRESS	Quartier Notre-Dame, Route de Cavaillon CS 10047, 84120 Pertuis, France

We hereby declare that the machine designated below:

GENERIC DENOMINATION	GRASS STRIMMER		
FUNCTION	MAINTAINING GREEN AREAS		
COMMERCIAL NAME	EXCELION E		
TYPE	EXCELION E		
MODEL	EXCELION E LH		
SERIAL NO.	53Z00001 - 53Z9999	53A00001 - 53A49999	53B00001 - 53B49999

This declaration of conformity is issued under the sole responsibility of the manufacturer.

The object of the declaration described above complies with the relevant Union harmonisation legislation:

- Directive 2006/42/EC
- Directive 2014/30/EU
- Directive 2011/65/EU
- Regulation (REACH) No 1907/2006
- Directive 2012/19/EU
- Directive 2000/14/EU

The following standards have been used in whole or in part:

- EN 60335-1:2012 + A11:2014 + A13:2017 + A1:2019 + A2:2019 + A14:2019 + A15:2021 + A16:2023
- EN 50636-2-91:2014
- EN ISO 11806-1:2022
- EN 62841-1:2015 + A11:2022
- FprEN IEC 62841-4-4:2020 / FprAA:2021
- EN IEC 55014-1:2021
- EN IEC 55014-2:2021
- EN ISO 12100:2010

#### Sound power level:

- Measured sound power level  $L_{WAm}$ : 94.4 dB (A)
- Guaranteed sound power level  $L_{WAg}$ : 95 dB(A)

The measured noise level and the guaranteed noise level were measured according to a procedure in accordance with Directive 2000/14 / EC Annex V.

Signed for and on behalf of:

Pascal MOULINIER  
Group VP Engineering

A handwritten signature in black ink, appearing to read 'Pascal Moulinier', with a stylized flourish at the end.

PERTUIS, date 24/04/2025

## 11.2. UK DECLARATION OF CONFORMITY <sup>UK</sup>CA : EXCELION E LH

MANUFACTURER / PERSON AUTHORISED TO COMPILE THE TECHNICAL FILE	PELENC
ADDRESS	Quartier Notre-Dame - 84120 Pertuis (France)

We hereby declare that the machine referred to below as:

GENERIC DENOMINATION	GRASS STRIMMER		
FUNCTION	MAINTAINING GREEN AREAS		
COMMERCIAL NAME	EXCELION E		
TYPE	EXCELION E		
MODEL	EXCELION E LH		
SERIAL NO.	53Z00001 - 53Z9999	53A00001 - 53A49999	53B00001 - 53B49999

This declaration of conformity is issued under the sole responsibility of the manufacturer.

The object of the declaration described above is in conformity with the relevant statutory requirements:

- Electromagnetic Compatibility Regulations 2016
- 1907/2006 REACH Regulations
- The Waste Electrical and Electronic Equipment Regulations 2013
- BS EN 62841-1 : 2015
- BS EN ISO 11806-1 : 2011
- the Restriction of the Use of Certain Hazardous Substances in Electrical and Electronic Equipment Regulations 2012
- S.I. No. 632/2001 - European Communities (Noise Emission by Equipment For Use Outdoors) Regulations
- BS EN 55014-1 : 2017
- BS EN 55014-2 : 2015.

### Sound power level:

- Measured sound power level  $L_{WAm}$ : 94.4 dB (A)
- Guaranteed sound power level  $L_{WAg}$ : 95 dB(A)

The measured sound level and the guaranteed sound power level were measured according to a procedure compliant with Directive 2000/14/EC Annex V.

Signed by and on behalf of :

Pascal MOULINIER  
CHIEF EXECUTIVE OFFICER



PERTUIS, date: 2025-04-25







# ***PELENC***

   [www.pellenc.com](http://www.pellenc.com)

PELENC  
Quartier Notre Dame - 84120 Pertuis (France)

