

**ENG**

Translation of the  
original user guide



## PELLENC POWER TOOLS BATTERY ALPHA 260 / 520

Operating instructions

56\_133912-F  
08/2019

READ THE USER GUIDE CAREFULLY BEFORE USE

   #LOVEELECTRIC

**PELLENC**



# TABLE OF CONTENTS

<b>INTRODUCTION .....</b>	<b>5</b>
<b>SAFETY .....</b>	<b>6</b>
SAFETY MEASURES ASSOCIATED WITH THE USE OF THE TOOL .....	6
SAFETY MEASURES ASSOCIATED WITH BATTERY USE .....	6
SAFETY MEASURES WHEN USING THE "PELLENC" CHARGER .....	7
SAFETY SIGNAGE .....	7
<b>DESCRIPTION AND TECHNICAL CHARACTERISTICS .....</b>	<b>9</b>
DESCRIPTION AND TECHNICAL CHARACTERISTICS .....	9
<i>TECHNICAL CHARACTERISTICS - BATTERY</i> .....	9
<i>TECHNICAL CHARACTERISTICS - CHARGER</i> .....	9
DESCRIPTION .....	10
<b>COMMISSIONING .....</b>	<b>12</b>
BATTERY DISPLAY .....	12
CHARGING THE BATTERY .....	12
THE WALL-MOUNTED CHARGING STATION .....	14
<i>INSTALLING THE WALL-MOUNTED CHARGING STATION</i> .....	14
<i>CONNECTING/DISCONNECTING THE BATTERY ON THE WALL-MOUNTED CHARGING STATION</i> .....	15
THE HARNESS .....	16
CONNECT THE BATTERY TO THE HARNESS .....	16
CONNECT THE TOOL TO THE HARNESS .....	17
<b>USAGE .....</b>	<b>18</b>
<b>MAINTENANCE .....</b>	<b>18</b>
MISCELLANEOUS MAINTENANCE BATTERY .....	18
MISCELLANEOUS MAINTENANCE CHARGER .....	18
<b>INCIDENTS AND TROUBLESHOOTING .....</b>	<b>19</b>
SUMMARY OF CHARGE INDICATOR AND BEEP MESSAGES .....	19
<b>STORAGE AND TRANSPORT .....</b>	<b>20</b>
<b>ACCESSORIES AND CONSUMABLES .....</b>	<b>21</b>
ACCESSORIES (NOT SUPPLIED WITH THE BATTERY) .....	21
<b>WARRANTIES .....</b>	<b>22</b>
GENERAL WARRANTIES .....	22
STATUTORY WARRANTY .....	22
COMMERCIAL WARRANTYPELLENC .....	22

PAID AFTER-SALES SERVICE ..... 23

**EC STATEMENT OF COMPLIANCE ..... 25**

**"EC" DECLARATION OF CONFORMITY: 260 / 520 BATTERIES ..... 25**

## 1. INTRODUCTION

Dear Customer,

Thank you for purchasing your Pellenc power tools battery ALPHA 260 / 520. Correctly used and maintained, this tool will give a satisfactory performance for many years.



### **Warning**

Your device contains numerous recoverable or recyclable materials. Return it to your dealer or, failing this, to an approved servicing centre to be treated.



Comply with the regulations in force in your country as concerns environmental protection associated with your activity.




### **Warning**

It is imperative that you read through the ENTIRE user's manual before using or servicing the tool. Always comply with the instructions and illustrations in the manual.

All through this user guide you will find advisory notes and information entitled: REMARK, CAUTION / WARNING.

A REMARK provides additional information, clarifies a point or explains a step to be followed in detail.

WARNINGS or CAUTIONS call attention to a procedure which, if not performed or incorrectly performed, could cause physical damage and/or serious injury.

The warning  indicates that damage resulting from failure to comply with the procedures and instructions is not covered by the warranty and the owner will be liable for any repair costs.

Safety indications are also given on the tool; they remind you of the safety precautions to be taken. Identify and read these indications before using the tool. Immediately replace any indications that may become partially illegible or deteriorated.

Refer to the "SAFETY SIGNS" section, which shows where the signs are on the tool.

No part of this manual may be reproduced without the written permission of the company PELENC. The illustrations provided in this manual are for information purposes and are in no way contractual. The PELENC company reserves the right to make any modification or improvement to its products as deemed necessary without informing customers already in possession of a similar model. This manual forms an integral part of the tool and must accompany the tool if it changes hands.

## 2. SAFETY



### **Warning**

Never carry out maintenance work on damaged battery packs. Service of battery packs should only be performed by the manufacturer or authorized service providers.

### 2.1. SAFETY MEASURES ASSOCIATED WITH THE USE OF THE TOOL

#### **Note**

Please refer to the instructions of the tool concerned.



### **Warning**

Read all the safety measures and all the instructions. Retain all the safety measures and instructions for later reference.

This device is not intended for use by individuals (including children) with reduced physical, sensory or mental capabilities, nor by anyone lacking in experience or knowledge, except if they are supervised or have received prior instructions from a person responsible for their safety.

### 2.2. SAFETY MEASURES ASSOCIATED WITH BATTERY USE

1. If not using the battery unit, store it away from other metal objects such as paper clips, coins, keys, nails, screws or other such small metal items that might form a connection between the two terminals. Creating a short-circuit between the battery terminals can lead to burns or cause a fire.
2. Keep the battery out of the reach of children and place it on a non-combustible support.
3. Do not interfere with its cooling cycle.
4. Do not use or leave the battery near a heat source (> 60°C).
5. Do not leave the battery in direct, strong sunlight.
6. Do not expose the battery to microwaves or high pressure.
7. Do not immerse the battery in water.
8. The batteries must be charged in a dry, ventilated room at a temperature between 10°C and 25°C maximum, away from any moisture.
9. If the battery is not used for 10 days, the battery will automatically discharge until it reaches its storage charge rate, and then goes to sleep. It will heat up during this phase.
10. Over time, the capacity of your battery reduces. When it reaches half of its original battery-life operating time, it should be replaced.
11. The battery may lose 1 to 4 % of its capacity when exposed to a temperature higher than or equal to 55 °C for one week.
12. The charging location must be equipped with a class D fire extinguisher (for metal fire) in good working order.
13. The standards in effect must be complied with when either shipping a complete tool or a battery.
  - A complete tool with a battery is a product that is classified as class 9, UN3481.
  - Battery alone: product that is classified as class 9, UN3480.
14. Use of a battery other than that provided by Pellenc SA is dangerous (risk of serious injury). If a different battery is used, Pellenc SA cannot be held responsible for any consequences.
15. The battery must be protected from any impact and must be positioned and secured appropriately during transportation.
16. In the case of suspicious smoke, place the battery outside the charging area or transportation vehicle as far away as possible from any inflammable material.
17. Never store a battery when its capacity is below 50 %. Recharge the battery before storage if the value is below 50%.

18. In inappropriate conditions, a liquid can flow batteries; avoid contact with it. In the event of accidental contact, rinse with water. In the event of contact with eyes, seek professional medical help. The liquid leaking from the batteries can cause irritations or burns.
19. Pellenc power tools must only be used with the battery units designed for the purpose. Use of other battery units can present a risk of injury and fire.
20. Only recharge using the charger indicated by the manufacturer. A charger adapted to one type of battery unit may present a fire risk if used with a different battery unit.
21. Do not use the battery for any purpose other than that initially envisaged (exclusively for use with Pellenc tools).
22. At the end of its life, the battery must be returned to the authorized distributor from whom it was purchased to be recycled in accordance with waste regulations.
23. Fragile case, contains an electronic board and lithium.

### 2.3. SAFETY MEASURES WHEN USING THE "PELENC" CHARGER

1. When in operation, the charger's temperature can reach 60°C. No flammable material must be within 1.5 metres of the charger and battery.
2. Place the charger out of children's reach and onto a non-combustible support.
3. Do nothing to impede the cooling of the device.
4. The charger supplied with the battery is designed to recharge the battery. Do not charge non-rechargeable batteries.
5. The charging location must be equipped with a class D fire extinguisher (for metal fire) in good working order.
6. If the output cord is cut or damaged, bring the entire charger back to the authorised distributor where the tool was purchased.
7. Only recharge using the "PELENC" charger indicated by the manufacturer. A charger adapted to one type of battery unit may present a fire risk if used with a different battery unit.
8. This charger is designed to charge the batteries of Pellenc's lithium tools.
9. Do not use it for any other purposes.
10. Children must be supervised to ensure they do not play with the charger.
11. Verify that the cable cannot be folded and does not touch hot surfaces or sharp edges.
12. Ensure good ventilation during the charge.
13. Never cover the charger. This charger must not be used outdoors.
14. Make sure the power connector is not exposed to water.
15. Never charge a damaged battery.
16. The grid connection must comply with national electrical regulations.
17. Check the cable of the charger before using it. Never use the charger if the cable is damaged
18. When the battery is charging, place the charger on a non-flammable support, more than 1.5 m away from any flammable object.

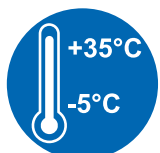
### 2.4. SAFETY SIGNAGE



Protection rating IP54 (Allover protection against dust and water spray).



Read the user guide.



This equipment must be used at a temperature of between -5° and +35°C.



Lithium-ion battery.

At the end of its life, the battery must be returned to the authorized distributor from whom it was purchased to be recycled in accordance with waste regulations.



Tool compliant with EC standards.

A utiliser uniquement avec le chargeur de batterie PELENC modèles CB5022, CB5075

The charger is exclusively designed to recharge the lithium-ion battery.

260 Battery

520 Battery

<b>BATTERY Li-Ion</b> REFERENCE 133210 ALPHA 520	43.2V x 12.00Ah = 518Wh IEC/EN 61960 43.2V ~ 11.80Ah 12INR19/66-4					
A utiliser uniquement avec le chargeur batterie PELENC modèle Usar sólo con el cargador de batería PELENC del modelo For use only with PELENC's battery charger model Nur zur Verwendung mit dem Ladegerät Modell PELENC Só usar com o carregador de bateria PELENC Per l'utilizzo solo con il caricabatteria modello PELENC						- CB5022 - CB5075

<b>BATTERY Li-Ion</b> REFERENCE 133210 ALPHA 520	43.2V x 12.00Ah = 518Wh IEC/EN 61960 43.2V ~ 11.80Ah 12INR19/66-4					
A utiliser uniquement avec le chargeur batterie PELENC modèle Usar sólo con el cargador de batería PELENC del modelo For use only with PELENC's battery charger model Nur zur Verwendung mit dem Ladegerät Modell PELENC Só usar com o carregador de bateria PELENC Per l'utilizzo solo con il caricabatteria modello PELENC						- CB5022 - CB5075



### 3. DESCRIPTION AND TECHNICAL CHARACTERISTICS

#### 3.1. DESCRIPTION AND TECHNICAL CHARACTERISTICS

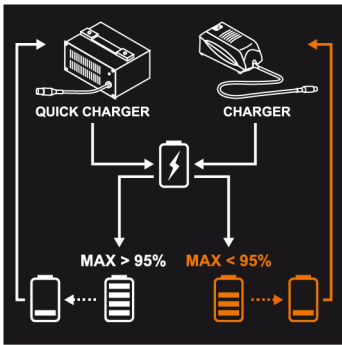
##### 3.1.1. TECHNICAL CHARACTERISTICS - BATTERY

Battery	Alpha 260	Alpha 520
Rated battery voltage	43.2 V <sup>===</sup>	
Type of battery	12 times 2 elements included in 1 pack	12 times 4 elements included in 1 pack
Battery capacity	6 Ah	12 Ah
Battery power	259 Wh	518 Wh
Battery life	Depending on the tool	
Weight/Battery	2.5 kg	3.6 kg
Operating frequency band	13.56 Mhz , Receiver	

##### 3.1.2. TECHNICAL CHARACTERISTICS - CHARGER

	CB5022 Charger	Quick Charger CB5075
Commercial reference of the charger	57230	57213
Voltage	100-240V ~ 50/60Hz 140W class II	100-240V ~ 50/60Hz 485W class I
Charging voltage	50.2 V dc	
Charging current	2.2A DC max.	7.6A dc max.

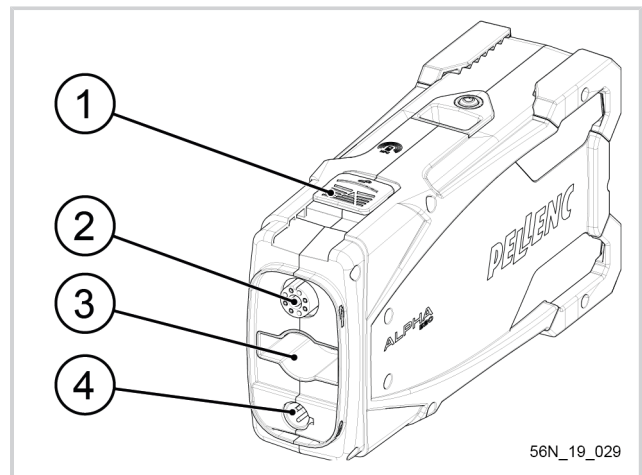
Battery		Alpha 260	Alpha 520
CB5022 Charger (2.2A)	70 %	2 hrs	3 hrs. 45 min.
	100 %	3 hrs. 45 min.	6 hrs.30 min.
Quick Charger CB5075 (7.6 A)  <i>If after charging with the CB5075 charger the battery display indicates less than 95%, the next time the battery is charged it must be done with the original charger. The sticker shown below is affixed to the CB5075 charger as a visual reminder of this warning.</i>	70 %	30 min	1 hr
	100 %	1 hr. 45 min.	2 hrs. 30 min.



**3.1.3. DESCRIPTION**

**Battery**

1. Safety lock
2. Picker power connector
3. Tool interface
4. Charging connector



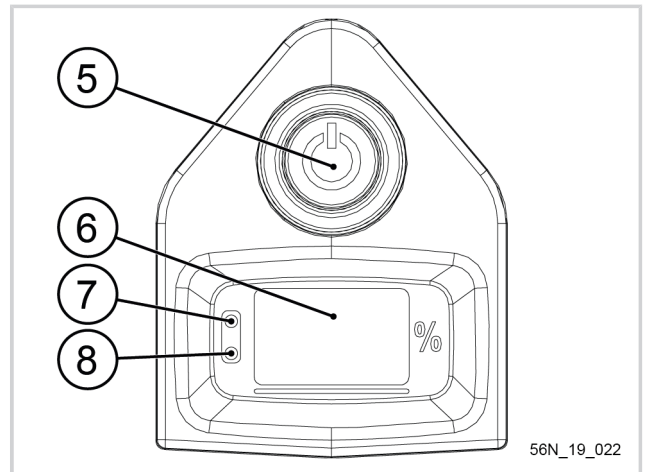
56N\_19\_029

**Battery display**

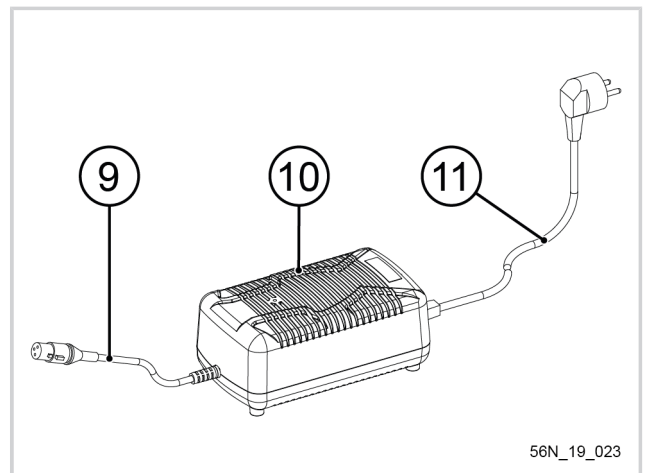
5. On/off button
6. Gauge display
7. Power on LED for battery
8. Charging LED for battery

**Note**

See details of battery display Section 4, "Commissioning"

**Charger (not supplied with the tool)**

9. Charging connector
10. Indicator light
11. Power cord



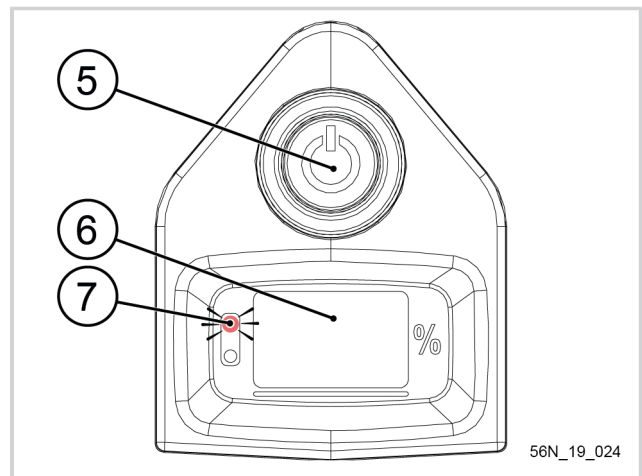
## 4. COMMISSIONING

### 4.1. BATTERY DISPLAY

The battery has a gauge display showing the remaining capacity it holds. The capacity is expressed as a percentage.

- If the gauge display shows 99, the battery is fully charged.
- If after a day's work the display shows 55, there is no need to recharge the battery before another day of work.
- If the display shows 00, or very close to it, it must be recharged at once.
- The battery gauge must be used like a fuel gauge on a car.
- While using the tool, the battery display may show -- to avoid duplicating the tool display.

When the battery is turned on with the on/off button (5), the battery on LED shows fixed red on the display. If the battery power LED (7) flashes after 5 seconds, this means the battery is waiting for a tool to be attached with a quick connector.



56N\_19\_024

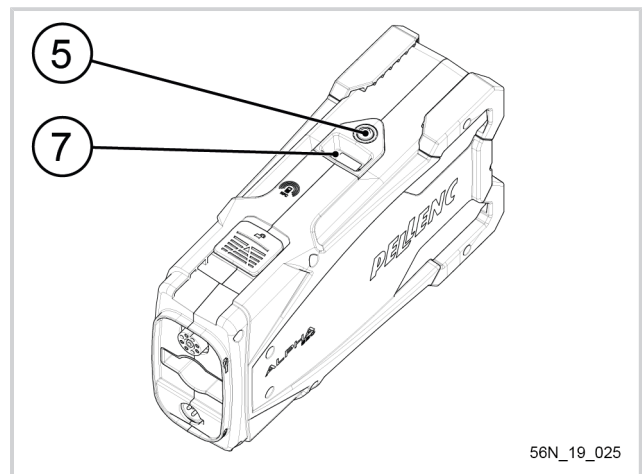
### 4.2. CHARGING THE BATTERY

When the battery is discharged, the tool stops automatically, the battery gauge display (6) shows 0% and the buzzer beeps intermittently (see Section 7.1, "Summary of charge indicator and beep messages").

Press the on/off button (5) at once to turn the battery off. When the battery is turned off, the battery power LED (7) disappears.

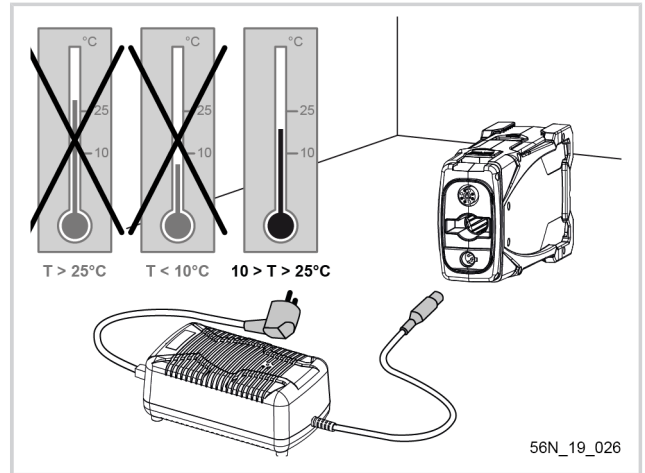
#### **Note**

Before using the battery for the first time at the start of a new season, it must be fully charged (99% steady).



56N\_19\_025

Place the charger and battery in a dry, ventilated and dust-free room at 10#25°C. Place the battery in a stable position.

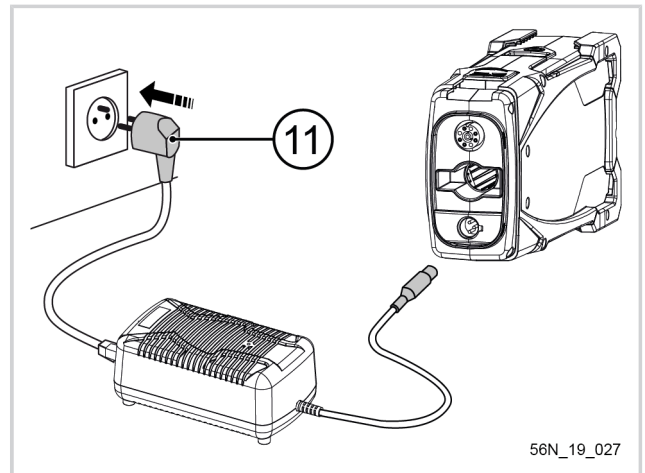


**Caution**

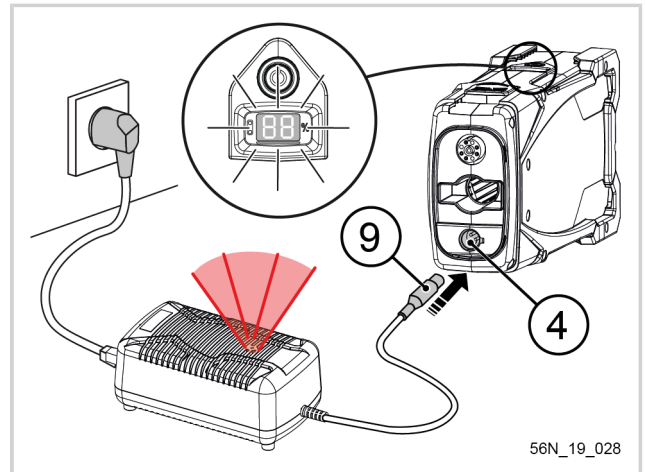


Before connecting the charger to the mains, check that your power system characteristics comply with the specifications given on the charger (see Section 3.1.2, “Technical characteristics - Charger”).

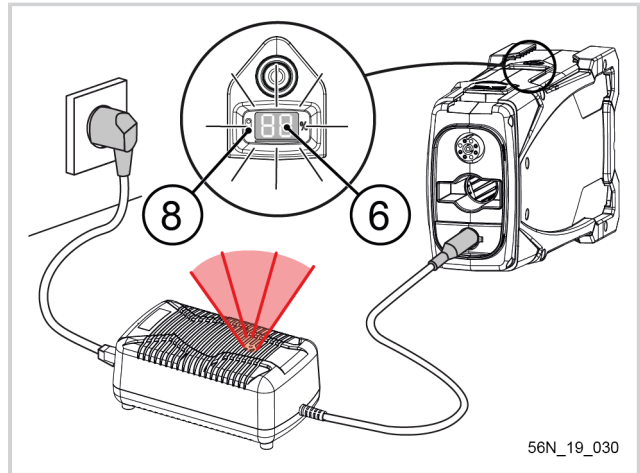
Connect the charger power connector (11) to the electrical power outlet. The charger LED lights up green.



Connect the charging cord (9) to the battery's charging connector (4). An audible “beep” indicates the charger is properly connected.



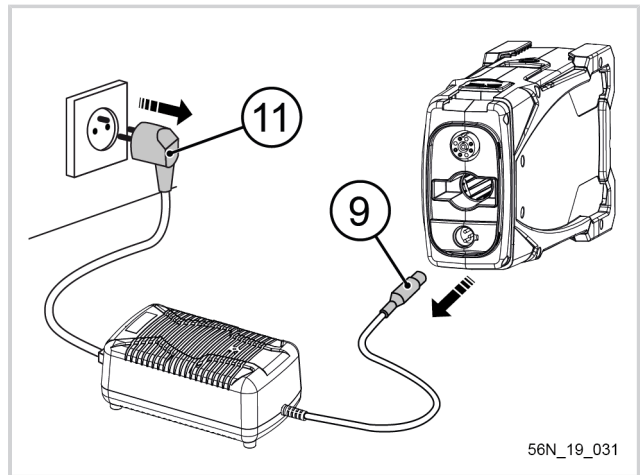
When the gauge display (6) flashes, the battery is charging. Charging is complete when the message 99 appears steadily on the gauge display (6). The battery charging LED (8) lights up orange to indicate the battery is charging. It flashes while charging, and shows steady when the charging is completed.



Once the battery is charged, disconnect the charging lead on the battery first (9), then the charger power connector (11).

**Note**

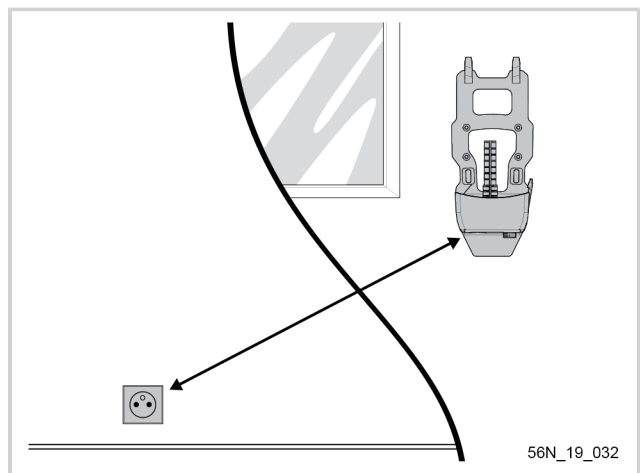
After a long storage period (new battery, winter storage etc.), when you disconnect the charger, the charge level indicator may display a value of less than 99%. This is a normal phenomenon which can reoccur for up to 5 charge cycles with normal use between each charge.



**4.3. THE WALL-MOUNTED CHARGING STATION**

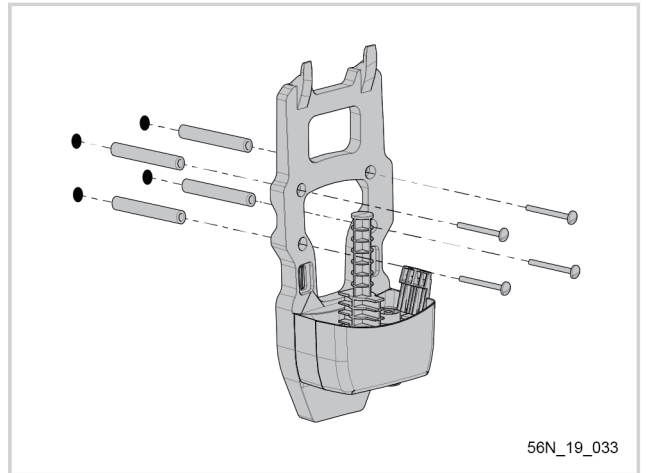
**4.3.1. INSTALLING THE WALL-MOUNTED CHARGING STATION**

Place the wall-mounted charging station near an electric socket so that it can be connected to the mains using the charger.



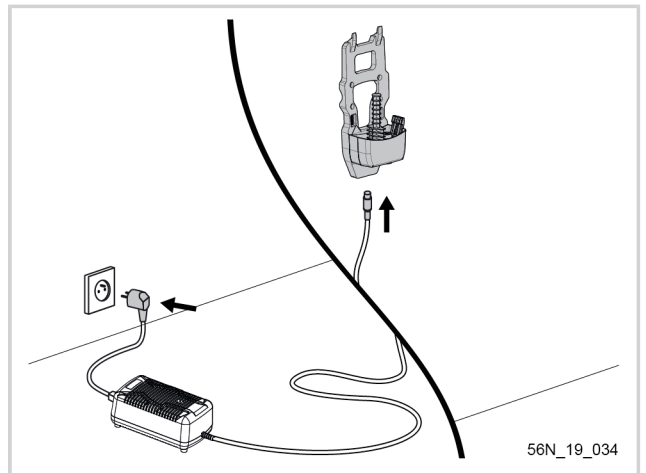
**In order to fix the wall-mounted charging station in place:**

1. Mark out the 4 points on the wall for drilling the holes to take the station fittings.
2. Drill and insert the plugs required, depending on the type of wall.
3. Put the charger station in place, and attach it using the 4 screws.



56N\_19\_033

Connect the charger to the wall-mounted station and to the mains.



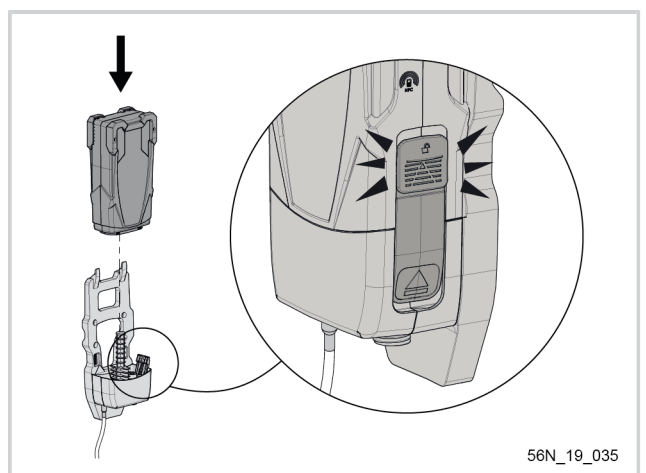
56N\_19\_034

**4.3.2. CONNECTING/DISCONNECTING THE BATTERY ON THE WALL-MOUNTED CHARGING STATION**

**- 4.3.2.1. CONNECTION**

**On the wall-mounted charging station:**

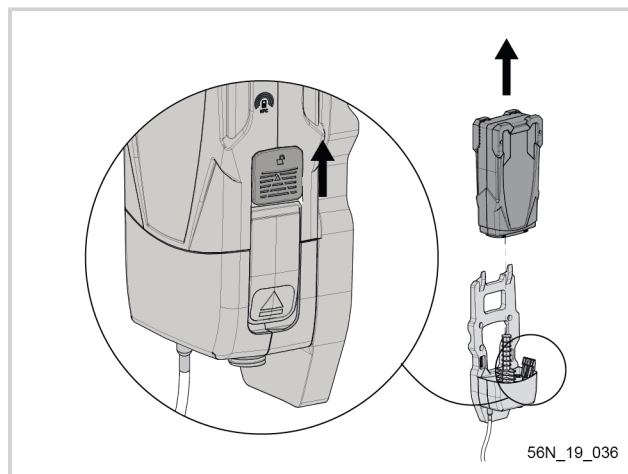
1. Connect the battery, making sure it is the right way round.
2. Slide the battery onto the guide on the station, until it locks in the clip on the charging station.



56N\_19\_035

**- 4.3.2.2. DISCONNECTION**

1. Release the battery safety lock
2. Press the battery release button, while holding the safety lock.
3. **Remove the battery from the guide on the station and take it off.**



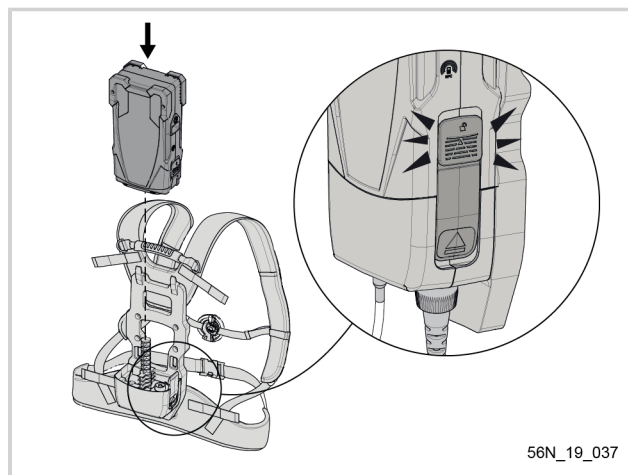
**4.4. THE HARNESS**

**4.4.1. CONNECT THE BATTERY TO THE HARNESS**

**- 4.4.1.1. CONNECTION**

**On the harness:**

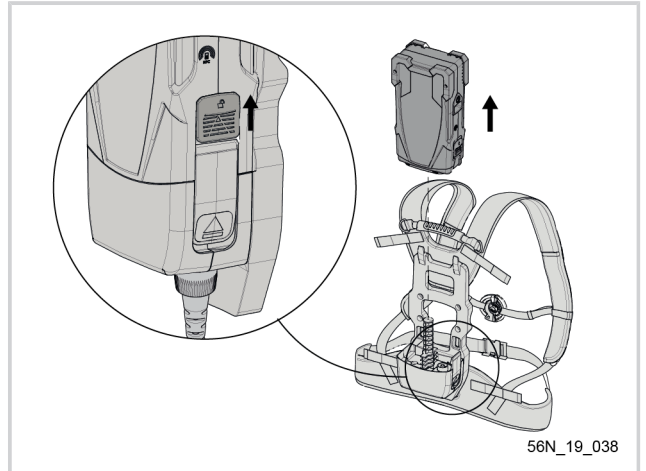
1. Connect the battery, making sure it is the right way round.
2. Slide the battery onto the guide on the base, until it locks in the clip.



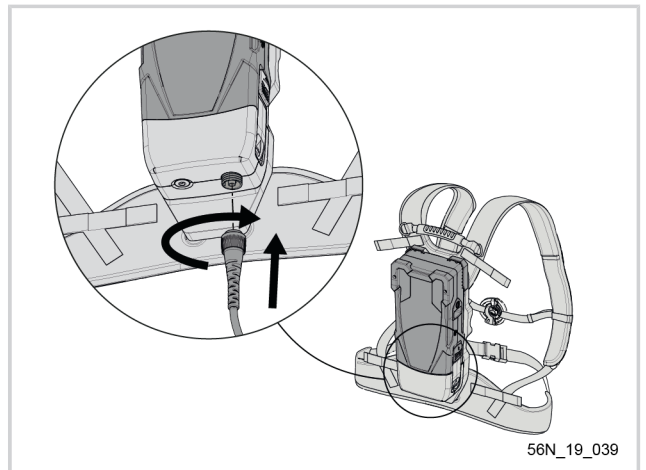


**- 4.4.1.2. DISCONNECTION**

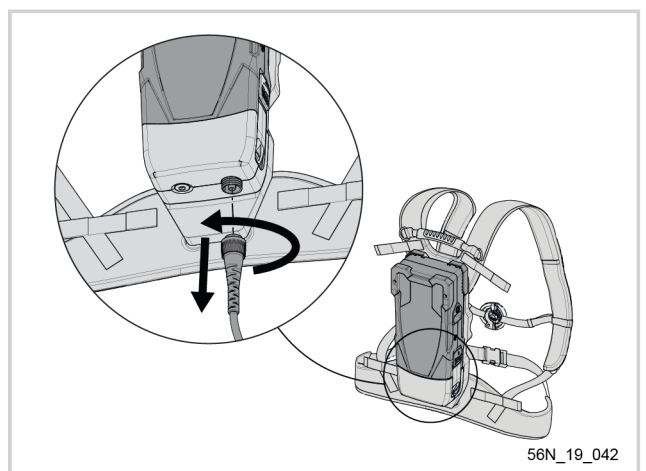
1. Release the battery safety lock
2. Press the battery release button, while holding the safety lock.
3. Remove the battery from the guide on the station and take it off.

**4.4.2. CONNECT THE TOOL TO THE HARNESS****- 4.4.2.1. CONNECTION**

1. Present the connect from the tool cable (or adapter)
2. Screw up the connector safety ring to keep the cable in position

**- 4.4.2.2. DISCONNECTION**

1. Unscrew the connector safety ring to release the cable.
2. Remove the cable from the tool (or the adapter) of the harness.



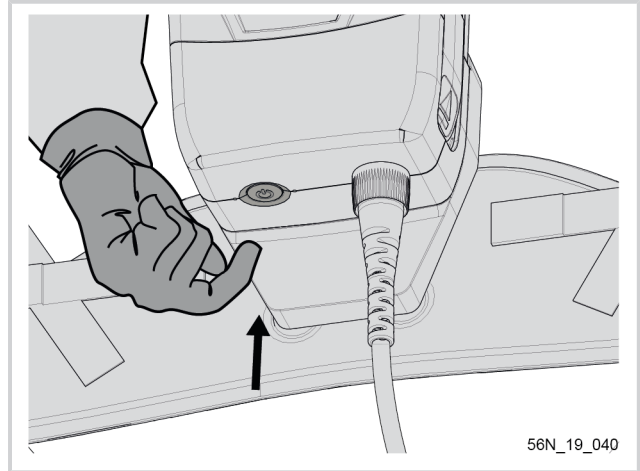
## 5. USAGE

### Start-up

- After connecting the tool, press for 1 second on the remote button (1) until you hear a “beep”.

### Stop

- If the tool is activated, press for 1 second on the remote button (1) until you hear a “beep”.



## 6. MAINTENANCE

### 6.1. MISCELLANEOUS MAINTENANCE BATTERY

The battery must not be connected to the charger or the tool, the switch must be in the off position. Disconnect the battery before cleaning. Disconnect the battery before cleaning. Clean the battery casing with a soft cloth and water.

### 6.2. MISCELLANEOUS MAINTENANCE CHARGER

Disconnect the charger before cleaning it. Clean the charger casing with a soft cloth and water.

## 7. INCIDENTS AND TROUBLESHOOTING

### 7.1. SUMMARY OF CHARGE INDICATOR AND BEEP MESSAGES

Normal messages	
Use	
88 fixed	Battery charge level (0 to 99)
00 with 1 beep per minute	Battery empty, recharge immediately
00 flashing with 1 beep every 10 seconds	Stop using, recharge immediately
--Flashing	Display off to avoid duplication with tool display
Charge	
88 flashing every 4 seconds	Battery charge level (0 to 99)
99 fixed	Charging complete
Storage	
88 flashing	Standby mode after 10 days of non-use

Degraded mode messages	
Use	
°C and 55 alternately	Stop the tool; the battery temperature is too high
°C and - and 20 alternately	Stop the tool: Battery temperature too low
NO or CO or HS	Stop the tool: current too high
LO fixed	Stop the tool; the tool temperature is too high
Long beep and 1 short beep	Stop the tool: intensity is too high
Long beep and 4 short beeps	Stop the tool: Tool temperature too high
Charge	
°C and 00 alternately	Charge interrupted: Battery temperature too low
°C and 45 alternately	Charge interrupted: Battery temperature too high

Fault messages	
Use	
88 and 1 beep every 2 minutes for 24 hours	Voltage too low after 3 hours of non-use. Recharge battery immediately
Charging	
Pb and bA alternating and continuous beep	Battery problem
Pb and CH alternately	Charger problem

#### If your tool no longer works:

1. Turn the battery off using the on/off button (5).
2. Check the battery is charged, as shown on the gauge display (6).
3. Check the lead is connected and the cable thumb-wheel tightened.
4. Check that the battery is properly clipped to the tool.
5. Turn the battery on using the on/off button (5). Press the trigger and the safety lock (depending on the tool).
6. If the tool does not work, return the complete equipment in its original packaging to a certified repair service.

## Important

Ⓒ Never attempt to dismantle the tying machine, under penalty of cancellation of the warranty. Contact your authorised repair person.

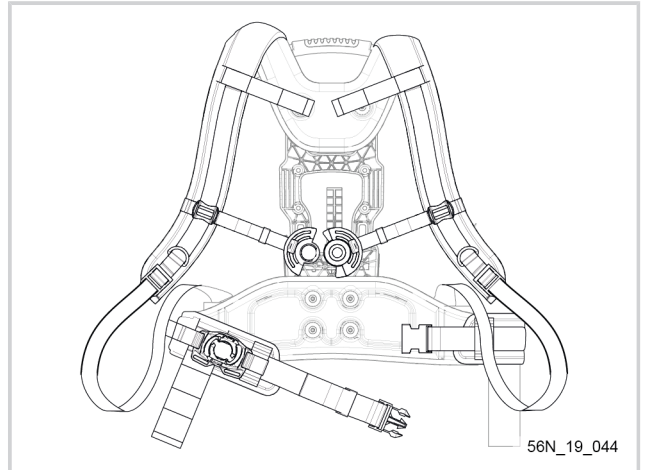
## 8. STORAGE AND TRANSPORT

- Store the “battery” unit and charger away from heat, dust and humidity, after turning off the battery using the on/off button (5)
- Never store the battery at an ambient temperature of more than +45 °C.
- **In order to conserve a long battery life and prevent deterioration, the battery must be charged when stored and recharged every 24 months if it is not used.**
- Never operate the on/off switch (5) during storage.
- Battery life is guaranteed by storage in a dry place at a steady temperature between 0 and 25 °C.
- No combustible object must be placed within 1.5 metres of the battery.
- If the battery is not used for 10 days, the battery will automatically discharge until it reaches its storage charge rate, and then goes to sleep. Warming up occurs during this phase.
- The charger is maintenance-free.

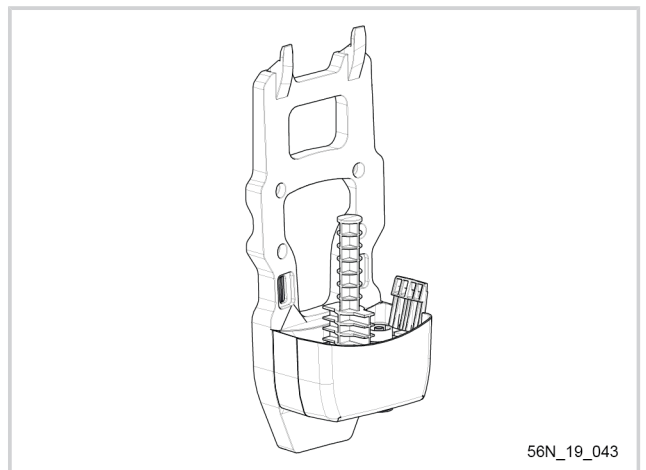
## 9. ACCESSORIES AND CONSUMABLES

### 9.1. ACCESSORIES (NOT SUPPLIED WITH THE BATTERY)

Harness (ref.: 57194)

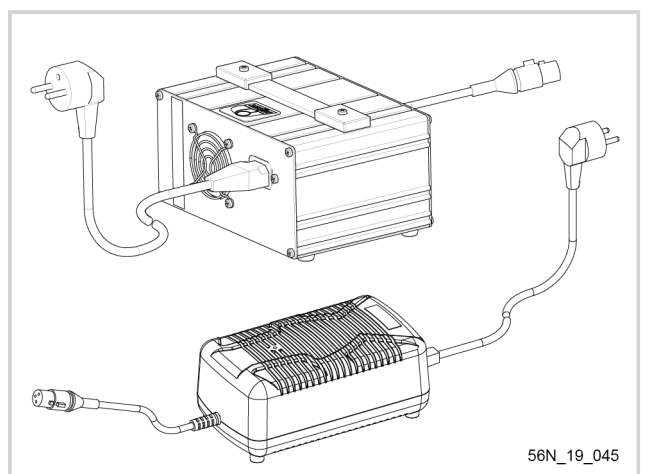


Wall-mounted charging station (ref.: 57240)



CB5022 Charger (ref.: 57230)

CB5075 Quick charger (ref.: 57213)



## 10. WARRANTIES

### 10.1. GENERAL WARRANTIES

#### 10.1.1. STATUTORY WARRANTY

##### - 10.1.1.1. LATENT DEFECTS WARRANTY

Apart from the commercial warranty provided for under Article II, Article 1641 of the Civil Code provides that "the seller is bound to a warranty on account of latent defects of the object sold which render it unfit for the use for which it was intended, or which would impair said use to the extent that the buyer would not have acquired it, or would only have given a lesser price for it, had he known of them".

Article 1648 of the Civil Code "The action resulting from latent defects must be brought by the purchaser within two years after the discovery of the defect. "

##### - 10.1.1.2. LEGAL WARRANTY OF CONFORMITY

Article L.217-4 of the Consumer Code "The seller delivers goods in conformity with the contract and is liable for defects of conformity existing upon delivery.

The seller is also liable for any lack of compliance resulting from the packaging, assembly or installation instructions whenever its contractual liability is engaged in this regard or the latter are carried out under its responsibility

Article L.217-5 of the French Consumer Code "Goods are compliant with the contract":

1. Where they are fit for the purpose normally expected of similar goods and, where applicable:
  - If it matches the description given by the seller and possesses the qualities that were presented to the purchaser in the form of a sample or model;
  - If it possesses the qualities that a purchaser can reasonably expect given the public statements made by the seller, the producer or its representative, especially in advertising or labelling;
2. Or, if it has the characteristics defined by mutual agreement of the parties or is fit for any particular purpose that the buyer made known to the seller and that the latter accepted.

Article L.217-12 of the Consumer Code "legal action resulting from lack of conformity lapses two years after delivery of the goods".

#### 10.1.2. COMMERCIAL WARRANTY PELENC

##### - 10.1.2.1. CONTENT

###### 10.1.2.1.1. GENERAL INFORMATION

In addition to legal warranties, client users benefit from the commercial warranty on products PELENC covering the exchange and replacement of parts recognised as being out of order, due to machining defects, assembly defects or material defects, whatever the cause.

The warranty is fully integral to the product sold by PELENC.

###### 10.1.2.1.2. SPARE PARTS

The commercial warranty also covers original PELENC spare parts, excluding labour and to the exclusion of certain parts of each product provided at delivery.

**- 10.1.2.2. DURATION OF THE WARRANTY****10.1.2.2.1. GENERAL INFORMATION**

PELENC Products are guaranteed under the commercial warranty as from delivery to the customer for a period of two (2) years for products connected to a PELENC battery, and for a period of one (1) year for other PELENC products.

**10.1.2.2.2. SPARE PARTS**

PELENC Replacement parts replaced under the product warranty are guaranteed under the commercial warranty as from delivery of the PELENC product to the customer user for a period of two (2) years for products connected to a PELENC battery, and for a period of one (1) year for other PELENC products.

In the case of products connected to a PELENC battery, parts that are replaced under the product warranty after the 12th month of use, are covered for a period of one (1) year.

**10.1.2.2.3. WARRANTY EXCLUSIONS**

Excluded from the commercial warranty are products that have been subject to abnormal use, or were used under conditions and for purposes other than those for which they were manufactured, especially in the case of non-compliance with conditions stipulated in this user manual.

It does not apply in case of shock, fall, neglect, lack of supervision or maintenance or in case of transformation of the product. Also excluded from the warranty are products that have been subject to tampering, alteration or modification by the client user.

Wear parts and/or consumables cannot be covered by the warranty.

**- 10.1.2.3. IMPLEMENTATION OF THE COMMERCIAL WARRANTY****10.1.2.3.1. PRODUCT COMMISSIONING AND COMMISSIONING DECLARATION**

The DISTRIBUTOR undertakes to complete the computer commissioning declaration form, no later than eight days after the delivery of the property to the user customer, in order to activate the latter on the [www.pellenc.com](http://www.pellenc.com) website under "warranties and training" in the "extranet" menu, using the identifier previously provided to them by PELENC.

Failing that, commissioning declaration will not be effective and implementation of the commercial warranty PELENC will not occur. As a consequence thereof, the DISTRIBUTOR must ensure the financial burden of its intervention under the warranty without being able to pass on the cost to the client user.

The DISTRIBUTOR shall also undertake to complete the warranty card or the certificate of warranty and commissioning for self-propelled equipment provided with the product after having the client user sign and date it.

**10.1.3. PAID AFTER-SALES SERVICE****- 10.1.3.1. GENERAL INFORMATION**

Malfunctions, breakdowns, breakages resulting from misuse, neglect or improper maintenance by the client user as well as malfunctions resulting from normal wear of the product are subject to the payment of after-sales service, even during the period of the legal and commercial warranty. After-sales service repairs that fall outside of the legal and commercial warranty also include maintenance, adjustments, diagnostics of all types, and cleaning without the present list being exhaustive.

**- 10.1.3.2. WEAR PARTS AND CONSUMABLES**

Wear parts and consumables also fall within the after-sales service.

**- 10.1.3.3. SPARE PARTS**

Paid after-sales service also covers original PELLENC spare parts, excluding labour and outside the legal and commercial warranty period.

In case of replacement of original PELLENC spare parts in the context of after-sales service, said latter are covered by a warranty of one year as from the installation date.



**11. EC STATEMENT OF COMPLIANCE**

**11.1. "EC" DECLARATION OF CONFORMITY: 260 / 520 BATTERIES**

MANUFACTURER	PELENC
ADDRESS	Quartier Notre-Dame - 84120 Pertuis (France)

ENTITY AUTHORIZED TO COMPILE THE TECHNICAL FILE	PELENC
ADDRESS	Quartier Notre-Dame - 84120 Pertuis (France)

We hereby declare that the machine referred to below as:

GENERIC DENOMINATION	Pellenc power tools battery
FUNCTION	Intended to power PELENC portable power tools
COMMERCIAL NAME	Access
TYPE	Li-ion battery
MODEL	Alpha 260 / Alpha 520
SERIAL No.	56S00001 - 56S49999 56T00001 - 56T49999 56U00001 - 56U49999

Complies with the relevant provisions of the machinery directive (2006/66/EC).

Complies with the provisions of the following European directives:

- 2014/30/EU EMC Directive
- 2011/65/EU ROHS Directive
- 1907/2006 REACH Regulation

The following harmonised European standards have been used in whole or in part:

- EN 62133: 2013

SIGNED IN PERTUIS, DATED 17/04/2019  
JEAN-MARC GIALIS  
CEO





# **PELLENC**

   [www.pellenc.com](http://www.pellenc.com)

PELLENC  
Quartier Notre Dame - 84120 Pertuis (France)

